

S

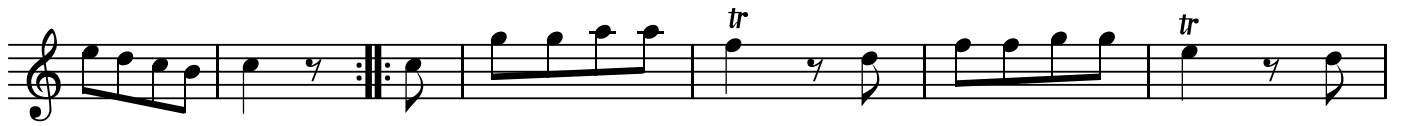
No. 3

BK=1



Musical staff for BK=1, featuring a treble clef, a 2/4 time signature, and a dynamic marking of *S*. The staff contains a sequence of eighth and sixteenth notes, including a triplet of eighth notes and a sixteenth rest.

BK=2



Musical staff for BK=2, featuring a treble clef and a repeat sign. The staff contains eighth and sixteenth notes, with trills (*tr*) and sixteenth rests.

BK=3



Musical staff for BK=3, featuring a treble clef and a repeat sign. The staff contains eighth and sixteenth notes, with a trill (*tr*) and sixteenth rests.

BK=4



Musical staff for BK=4, featuring a treble clef and a repeat sign. The staff contains eighth and sixteenth notes, including a sharp sign (#) and a sixteenth rest.

A

No. 3

BK=1



Musical notation for BK=1, featuring a treble clef and a 2/4 time signature. The piece begins with a quarter rest, followed by a series of eighth-note patterns. The first measure contains a quarter rest, and the second measure contains a quarter note. The notation continues with eighth-note runs and quarter notes, ending with a quarter note and a quarter rest.

BK=2



Musical notation for BK=2, featuring a treble clef. The notation starts with a quarter note, followed by a quarter rest, a repeat sign, and a quarter note. This is followed by a series of eighth-note patterns, including a triplet of eighth notes, and ends with a quarter note and a quarter rest.

BK=3



Musical notation for BK=3, featuring a treble clef. The notation begins with a series of eighth-note patterns, including a triplet of eighth notes, followed by a quarter note and a quarter rest. This is followed by a quarter note, a quarter rest, a repeat sign, and a quarter note. The notation continues with quarter notes and eighth-note patterns, ending with a quarter note and a quarter rest.

BK=4

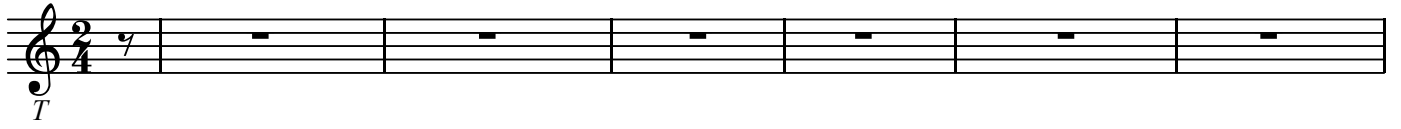


Musical notation for BK=4, featuring a treble clef. The notation starts with a quarter note, a quarter rest, a quarter note, and a quarter rest. This is followed by a quarter note, a quarter rest, a quarter note, and a quarter rest. The notation continues with quarter notes and eighth-note patterns, ending with a quarter note and a quarter rest.

T

No. 3

BK=1



BK=2



BK=3



BK=4



B

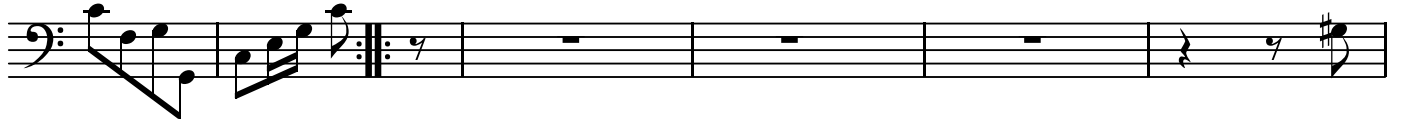
No. 3

BK=1



Musical staff for BK=1, bass clef, 2/4 time signature. The staff contains a sequence of eighth and sixteenth notes, with a dynamic marking 'B' below the first measure.

BK=2



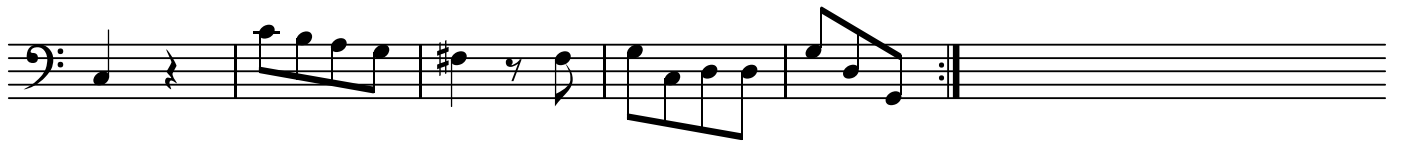
Musical staff for BK=2, bass clef. The staff contains a sequence of eighth and sixteenth notes, followed by a double bar line and a repeat sign with a fermata over the first measure of the repeat.

BK=3



Musical staff for BK=3, bass clef. The staff contains a sequence of eighth and sixteenth notes, followed by a double bar line and a repeat sign with a fermata over the first measure of the repeat.

BK=4



Musical staff for BK=4, bass clef. The staff contains a sequence of eighth and sixteenth notes, followed by a double bar line and a repeat sign with a fermata over the first measure of the repeat.