

BK=1

Musical staff for BK=1, starting with a treble clef, a key signature of two flats (B-flat and E-flat), and a common time signature (C). The melody begins with a quarter note G4, followed by quarter notes A4, B-flat4, and C5. A quarter rest follows, then quarter notes D5, E5, F5, and G5. The piece concludes with a half note G5, which is part of a series of four half notes (G5, F5, E5, D5) each with a slur above it.

BK=2

Musical staff for BK=2, starting with a treble clef, a key signature of two flats, and a common time signature. The melody begins with a quarter note G4, followed by quarter notes A4, B-flat4, and C5. A quarter rest follows, then quarter notes D5, E5, F5, and G5. The piece concludes with a half note G5, which is part of a series of four half notes (G5, F5, E5, D5) each with a slur above it.

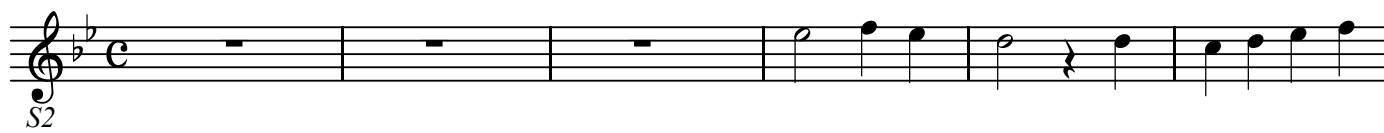
BK=3

Musical staff for BK=3, starting with a treble clef, a key signature of two flats, and a common time signature. The melody begins with a quarter note G4, followed by quarter notes A4, B-flat4, and C5. A quarter rest follows, then quarter notes D5, E5, F5, and G5. The piece concludes with a half note G5, which is part of a series of four half notes (G5, F5, E5, D5) each with a slur above it.

BK=4

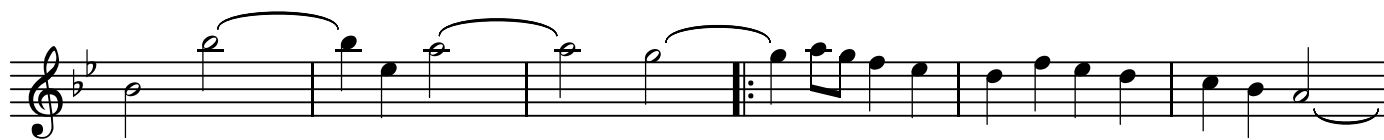
Musical staff for BK=4, starting with a treble clef, a key signature of two flats, and a common time signature. The melody begins with a quarter note G4, followed by quarter notes A4, B-flat4, and C5. A quarter rest follows, then quarter notes D5, E5, F5, and G5. The piece concludes with a half note G5, which is part of a series of four half notes (G5, F5, E5, D5) each with a slur above it.

BK=1



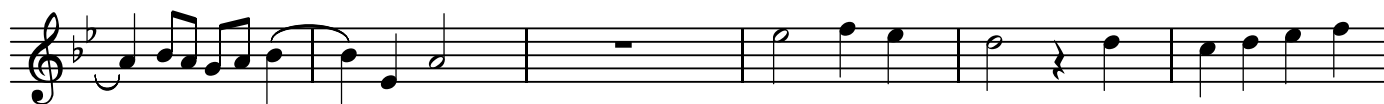
Musical staff for BK=1, showing the first part of the canon in G minor, C major, and G minor. The staff contains a treble clef, a key signature of two flats, and a common time signature. The music begins with a whole rest for three measures, followed by a half note G4, a quarter note A4, a quarter note B4, a half note C5, a quarter rest, a quarter note B4, a quarter note A4, and a quarter note G4.

BK=2



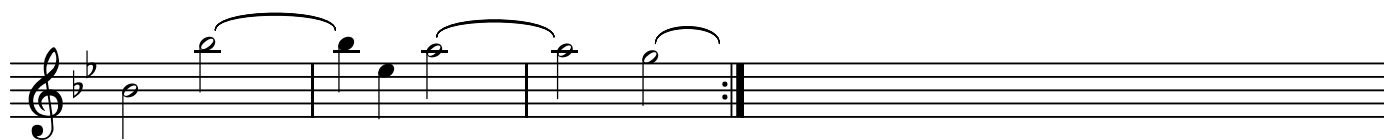
Musical staff for BK=2, showing the second part of the canon. It begins with a half note G4, followed by a quarter note A4, a quarter note B4, a half note C5, a quarter note B4, a quarter note A4, and a quarter note G4. This is followed by a repeat sign and a descending eighth-note scale: G4, F4, E4, D4, C4, B3, A3, G3.

BK=3



Musical staff for BK=3, showing the third part of the canon. It begins with a quarter note G4, followed by eighth notes A4, B4, C5, B4, A4, G4, a quarter note F4, a quarter note E4, a half note D4, a whole rest for two measures, a half note G4, a quarter note A4, a quarter note B4, a half note C5, a quarter rest, a quarter note B4, a quarter note A4, and a quarter note G4.

BK=4



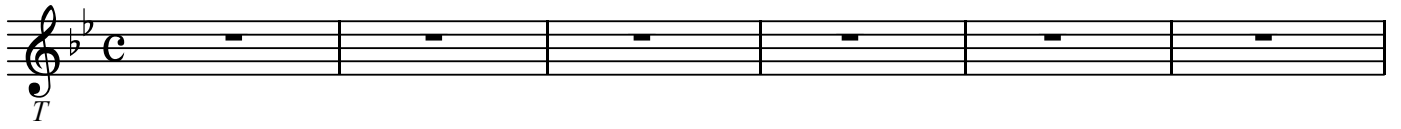
Musical staff for BK=4, showing the fourth part of the canon. It begins with a half note G4, followed by a quarter note A4, a quarter note B4, a half note C5, a quarter note B4, a quarter note A4, and a quarter note G4. This is followed by a repeat sign and a descending eighth-note scale: G4, F4, E4, D4, C4, B3, A3, G3.

T

四声のカノン KV Anh191

W.A.Mozart

BK=1



BK=2



BK=3



BK=4

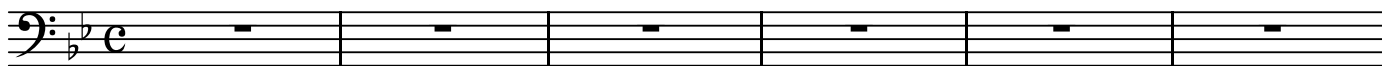


GB

四声のカノン KV Anh191

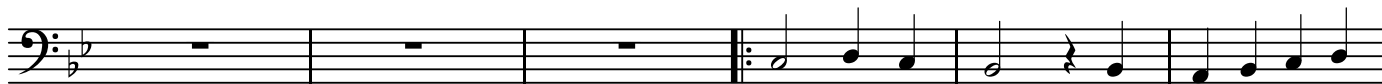
W.A.Mozart

BK=1



GB

BK=2



BK=3



BK=4

