

A1

No. 4

BK=1



A musical staff in treble clef, key signature of one flat (Bb), and common time (C). The staff contains a sequence of notes: a quarter rest, a quarter note Bb, a dotted quarter note Bb, an eighth note A, an eighth note G, a quarter note F, a quarter note E, a quarter note D, a quarter note C, a quarter note Bb, and a quarter note A. This sequence is followed by a repeat sign. After the repeat sign, there are two quarter notes, each marked with a fermata (a curved line with a vertical stem) above it.

Al

BK=2



A musical staff in treble clef, key signature of one flat (Bb), and common time (C). The staff contains a sequence of notes: a quarter rest, a quarter note Bb, a dotted quarter note Bb, an eighth note A, an eighth note G, a quarter note F, a quarter note E, a quarter note D, a quarter note C, a quarter note Bb, and a quarter note A. This sequence is followed by a repeat sign.

A2

No. 4

BK=1



A2
BK=2



A3

No. 4

BK=1



A3
BK=2



T1

No. 4

BK=1



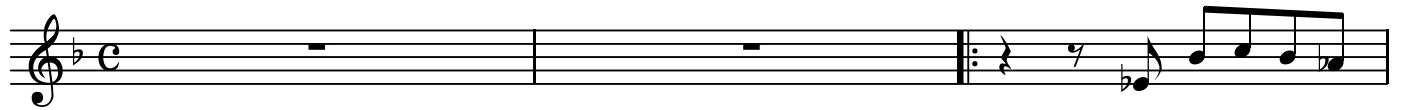
T1
BK=2



T3

No. 4

BK=1



T3
BK=2

