

A1

4声のカノン KV89a I

W.A.Mozart

BK=1

Musical staff for BK=1, featuring a treble clef, a key signature of one flat (B-flat), and a common time signature (C). The staff contains a sequence of notes with a trill (tr) above the fourth measure. The notes are: C4, D4, E4, F4, G4, A4, B4, C5, B4, A4, G4, F4, E4, D4, C4. The trill is on the G4 note in the fourth measure.

BK=2

Musical staff for BK=2, featuring a treble clef, a key signature of one flat (B-flat), and a common time signature (C). The staff contains a sequence of notes with a trill (tr) above the fourth measure. The notes are: C4, D4, E4, F4, G4, A4, B4, C5, B4, A4, G4, F4, E4, D4, C4. The trill is on the G4 note in the fourth measure.

BK=3

Musical staff for BK=3, featuring a treble clef, a key signature of one flat (B-flat), and a common time signature (C). The staff contains a sequence of notes with a trill (tr) above the fourth measure. The notes are: C4, D4, E4, F4, G4, A4, B4, C5, B4, A4, G4, F4, E4, D4, C4. The trill is on the G4 note in the fourth measure.

BK=4

Musical staff for BK=4, featuring a treble clef, a key signature of one flat (B-flat), and a common time signature (C). The staff contains a sequence of notes with a trill (tr) above the fourth measure. The notes are: C4, D4, E4, F4, G4, A4, B4, C5, B4, A4, G4, F4, E4, D4, C4. The trill is on the G4 note in the fourth measure.

BK=5

Musical staff for BK=5, featuring a treble clef, a key signature of one flat (B-flat), and a common time signature (C). The staff contains a sequence of notes with a trill (tr) above the fourth measure. The notes are: C4, D4, E4, F4, G4, A4, B4, C5, B4, A4, G4, F4, E4, D4, C4. The trill is on the G4 note in the fourth measure.

A2

4声のカノン KV89a I

W.A.Mozart

BK=1

Musical staff for BK=1, starting with a treble clef, a key signature of one flat (B-flat), and a common time signature (C). The staff contains a series of notes, including a whole note rest, followed by a sequence of eighth notes and quarter notes, and ending with a whole note rest.

BK=2

Musical staff for BK=2, starting with a treble clef, a key signature of one flat (B-flat), and a common time signature (C). The staff contains a series of notes, including a whole note rest, followed by a sequence of eighth notes and quarter notes, and ending with a whole note rest. A trill (tr.) is indicated above the first note.

BK=3

Musical staff for BK=3, starting with a treble clef, a key signature of one flat (B-flat), and a common time signature (C). The staff contains a series of notes, including a whole note rest, followed by a sequence of eighth notes and quarter notes, and ending with a whole note rest. A trill (tr.) is indicated above the last note.

BK=4

Musical staff for BK=4, starting with a treble clef, a key signature of one flat (B-flat), and a common time signature (C). The staff contains a series of notes, including a whole note rest, followed by a sequence of eighth notes and quarter notes, and ending with a whole note rest.

BK=5

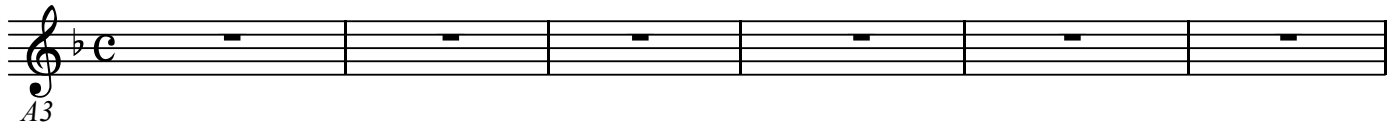
Musical staff for BK=5, starting with a treble clef, a key signature of one flat (B-flat), and a common time signature (C). The staff contains a series of notes, including a whole note rest, followed by a sequence of eighth notes and quarter notes, and ending with a whole note rest. A trill (tr.) is indicated above the first note.

A3

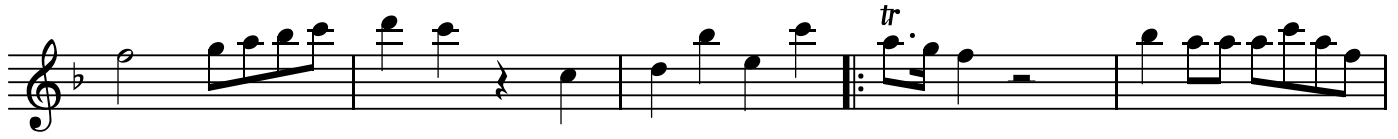
4声のカノン KV89a I

W.A.Mozart

BK=1



BK=2



BK=3



BK=4



BK=5



A4

4声のカノン KV89a I

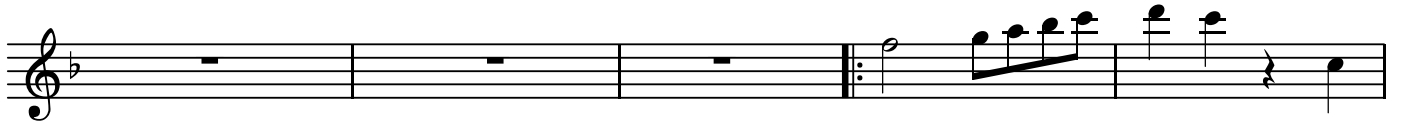
W.A.Mozart

BK=1



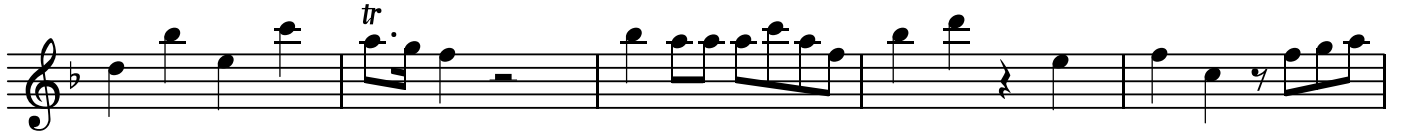
Musical staff for BK=1, showing a treble clef, a key signature of one flat (B-flat), and a common time signature (C). The staff contains six measures of whole rests.

BK=2



Musical staff for BK=2, showing a treble clef, a key signature of one flat, and a common time signature. The staff contains six measures of whole rests, followed by a repeat sign, and then a melodic phrase starting with a half note G4, followed by quarter notes A4, B4, and C5, and ending with a quarter rest.

BK=3



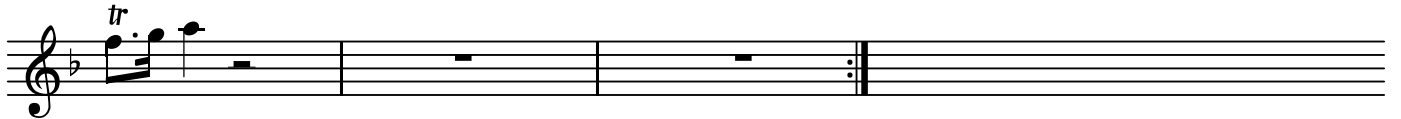
Musical staff for BK=3, showing a treble clef, a key signature of one flat, and a common time signature. The staff contains a melodic phrase starting with a quarter note G4, followed by quarter notes A4, B4, and C5, then a trill (tr) on G4, followed by quarter notes F4, E4, and D4, and ending with a quarter rest.

BK=4



Musical staff for BK=4, showing a treble clef, a key signature of one flat, and a common time signature. The staff contains a melodic phrase starting with a quarter note G4, followed by quarter notes A4, B4, and C5, then a quarter rest, followed by quarter notes D4, E4, and F4, and ending with a quarter rest.

BK=5



Musical staff for BK=5, showing a treble clef, a key signature of one flat, and a common time signature. The staff contains a melodic phrase starting with a trill (tr) on G4, followed by quarter notes A4, B4, and C5, then a quarter rest, followed by a repeat sign, and then a quarter rest.