

皇帝ティートの慈悲
第21番 涙以外のことを

W.A.Mozart

BK=1 Tempo di Minuetto

Musical staff BK=1, Treble clef, 3/4 time signature. The staff contains a whole rest, followed by a quarter note G4, a quarter note A4, a quarter note B4, a quarter note C5, a quarter note B4, a quarter note A4, a quarter note G4, and a quarter note F#4. A dynamic marking *fp* is placed below the final note.

Musical staff BK=2, Treble clef, 3/4 time signature. The staff contains a quarter note G4, a quarter note A4, a quarter note B4, a quarter note C5, a quarter note B4, a quarter note A4, a quarter note G4, and a quarter note F#4. A dynamic marking *fp* is placed below the first note.

Musical staff BK=3, Treble clef, 3/4 time signature. The staff contains a quarter note G4, a quarter note A4, a quarter note B4, a quarter note C5, a quarter note B4, a quarter note A4, a quarter note G4, and a quarter note F#4. Dynamic markings *p*, *cresc.*, and *p* are placed below the first, second, and fourth notes respectively.

Musical staff BK=4, Treble clef, 3/4 time signature. The staff contains a quarter note G4, a quarter note A4, a quarter note B4, a quarter note C5, a quarter note B4, a quarter note A4, a quarter note G4, and a quarter note F#4. Dynamic markings *p*, *cresc.*, and *f* are placed below the first, second, and fifth notes respectively.

Musical staff BK=5, Treble clef, 3/4 time signature. The staff contains a quarter note G4, a quarter note A4, a quarter note B4, a quarter note C5, a quarter note B4, a quarter note A4, a quarter note G4, and a quarter note F#4. Dynamic markings *p*, *cresc.*, and *fp* are placed below the first, second, and third notes respectively.

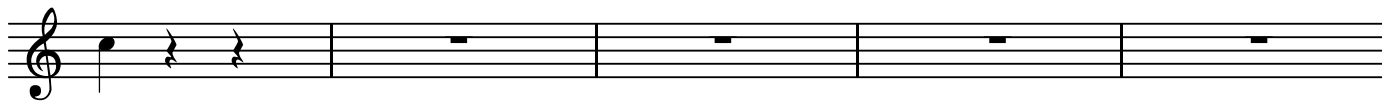
Musical staff BK=6, Treble clef, 3/4 time signature. The staff contains a quarter note G4, a quarter note A4, a quarter note B4, a quarter note C5, a quarter note B4, a quarter note A4, a quarter note G4, and a quarter note F#4. Dynamic markings *p* and *fp* are placed below the first and fifth notes respectively.

Musical staff BK=7, Treble clef, 3/4 time signature. The staff contains a quarter note G4, a quarter note A4, a quarter note B4, a quarter note C5, a quarter note B4, a quarter note A4, a quarter note G4, and a quarter note F#4. Dynamic markings *fp* and *p* are placed below the first and eighth notes respectively.

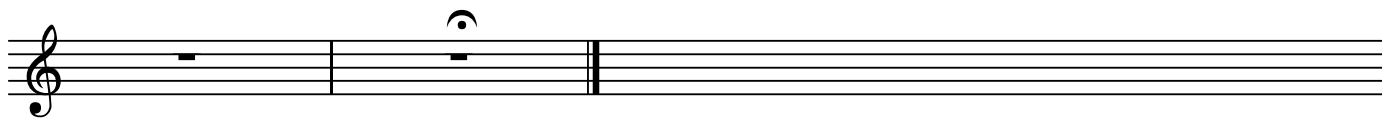
Musical staff BK=8, Treble clef, 3/4 time signature. The staff contains a quarter note G4, a quarter note A4, a quarter note B4, a quarter note C5, a quarter note B4, a quarter note A4, a quarter note G4, and a quarter note F#4. Dynamic markings *cresc.*, *p*, *cresc.*, *p*, and *cresc.* are placed below the first, second, third, fourth, and fifth notes respectively.

Musical staff BK=9, Treble clef, 3/4 time signature. The staff contains a quarter note G4, a quarter note A4, a quarter note B4, a quarter note C5, a quarter note B4, a quarter note A4, a quarter note G4, and a quarter note F#4. Dynamic markings *cresc.* and *p* are placed below the first and second notes respectively.

BK=10



BK=11



皇帝ティートの慈悲
第21番 涙以外のことを

W.A.Mozart

BK=1

Musical staff BK=1, treble clef, 3/4 time signature. The staff contains a sequence of eighth notes. A dynamic marking *fp* is placed below the staff towards the end of the line.

BK=2

Musical staff BK=2, treble clef. The staff contains a sequence of eighth notes with slurs. Dynamic markings *cresc.* and *fp* are placed below the staff.

BK=3

Musical staff BK=3, treble clef. The staff contains a sequence of eighth notes with slurs. Dynamic markings *p* and *cresc.* are placed below the staff.

BK=4

Musical staff BK=4, treble clef. The staff contains a sequence of eighth notes with slurs. Dynamic markings *p* and *cresc.* are placed below the staff.

BK=5

Musical staff BK=5, treble clef. The staff contains a sequence of eighth notes with slurs. Dynamic markings *p* and *cresc.* are placed below the staff.

BK=6

Musical staff BK=6, treble clef. The staff contains a sequence of eighth notes with slurs. Dynamic markings *p* and *fp* are placed below the staff.

BK=7

Musical staff BK=7, treble clef. The staff contains a sequence of eighth notes with slurs. Dynamic markings *fp* and *cresc.* are placed below the staff.

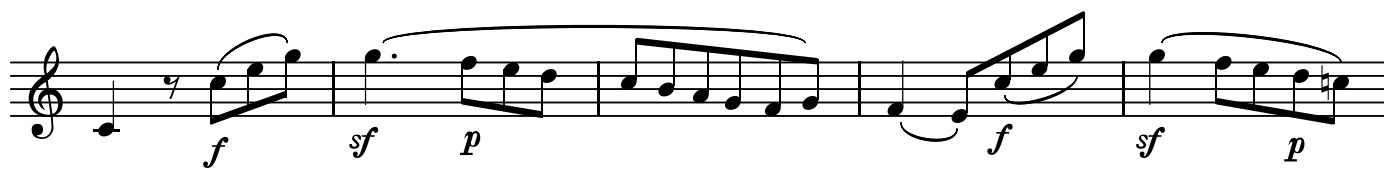
BK=8

Musical staff BK=8, treble clef. The staff contains a sequence of eighth notes with slurs. Dynamic markings *cresc.* and *p* are placed below the staff.

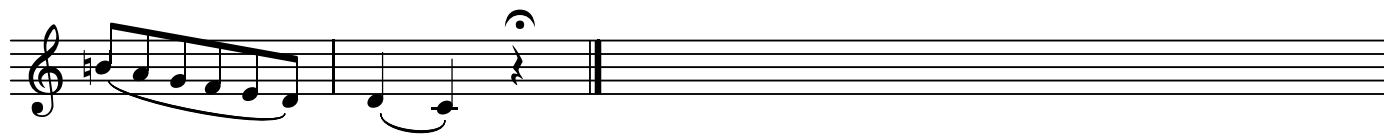
BK=9

Musical staff BK=9, treble clef. The staff contains a sequence of eighth notes with slurs. Dynamic markings *f* and *p* are placed below the staff.

BK=10



BK=11



皇帝ティートの慈悲
第21番 涙以外のことを

W.A.Mozart

BK=1
A
cresc. *fp*

BK=2
cresc. *fp* cresc.

BK=3
p cresc. *p*

BK=4
cresc. *p* cresc. *f*

BK=5
p cresc. *fp*

BK=6
cresc. *p* cresc. *fp* cresc.

BK=7
fp cresc. *p*

BK=8
cresc. *p* cresc. *p* cresc.

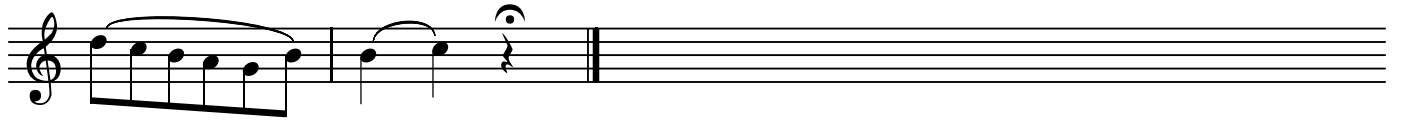
BK=9
f *p* *f* *p*

BK=10



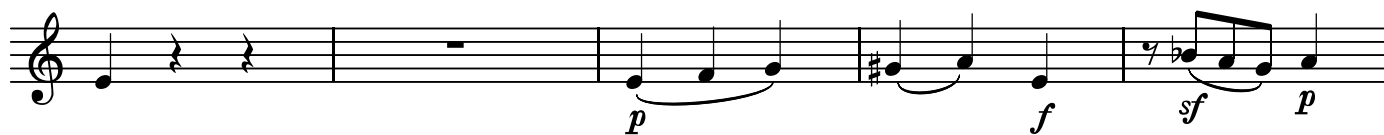
Musical notation for BK=10, featuring a treble clef and a series of notes with dynamic markings *f*, *sf*, *p*, *f*, *sf*, and *p*. The notation includes slurs and a fermata over the final note.

BK=11



Musical notation for BK=11, featuring a treble clef and a series of notes with a fermata over the final note.

BK=10



BK=11



B

皇帝ティートの慈悲
第21番 涙以外のことを

W.A.Mozart

BK=1

First musical staff (BK=1) in bass clef, 3/4 time. It begins with a whole note B. The melody continues with quarter notes, then a half note, and ends with a quarter note. Dynamics include *cresc.* and *fp*.

BK=2

Second musical staff (BK=2) in bass clef, 3/4 time. It starts with a half note, followed by quarter notes, and ends with a half note. Dynamics include *cresc.* and *fp*.

BK=3

Third musical staff (BK=3) in bass clef, 3/4 time. It features a half note, a quarter note, a half note, and a quarter note. Dynamics include *p* and *cresc.*.

BK=4

Fourth musical staff (BK=4) in bass clef, 3/4 time. It starts with a half note, followed by quarter notes, and ends with a half note. Dynamics include *cresc.* and *p*.

BK=5

Fifth musical staff (BK=5) in bass clef, 3/4 time. It begins with a half note, followed by quarter notes, and ends with a half note. Dynamics include *cresc.* and *fp*.

BK=6

Sixth musical staff (BK=6) in bass clef, 3/4 time. It starts with a half note, followed by quarter notes, and ends with a half note. Dynamics include *cresc.* and *fp*.

BK=7

Seventh musical staff (BK=7) in bass clef, 3/4 time. It begins with a half note, followed by quarter notes, and ends with a half note. Dynamics include *fp* and *cresc.*.

BK=8

Eighth musical staff (BK=8) in bass clef, 3/4 time. It starts with a half note, followed by quarter notes, and ends with a half note. Dynamics include *cresc.* and *p*.

BK=9

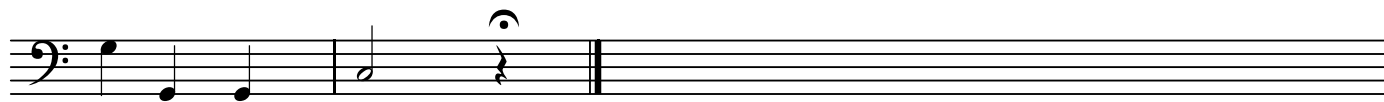
Ninth musical staff (BK=9) in bass clef, 3/4 time. It begins with a half note, followed by quarter notes, and ends with a half note. Dynamics include *p*.

BK=10



Musical notation for BK=10, bass clef, 5/4 time signature. The piece consists of five measures. The first measure has a dynamic marking of *f*. The second measure has dynamic markings of *sf* and *p*. The third measure has a slur over two notes. The fourth measure has a dynamic marking of *f*. The fifth measure has dynamic markings of *sf* and *p*. The key signature has one sharp (F#).

BK=11



Musical notation for BK=11, bass clef, 5/4 time signature. The piece consists of three measures. The first measure has a dynamic marking of *f*. The second measure has a dynamic marking of *p*. The third measure has a dynamic marking of *f* and a slur over two notes. The key signature has one sharp (F#).