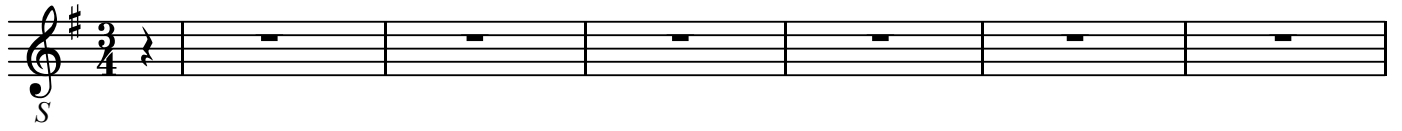


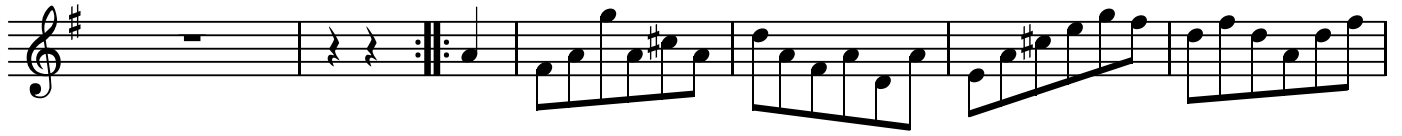
S

No. 6

BK=1



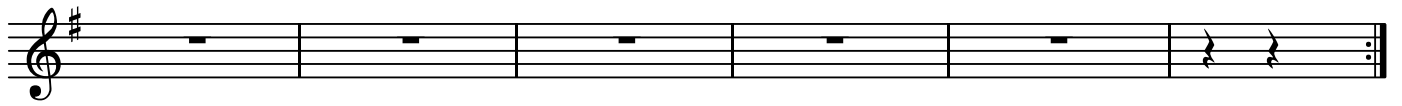
BK=2



BK=3



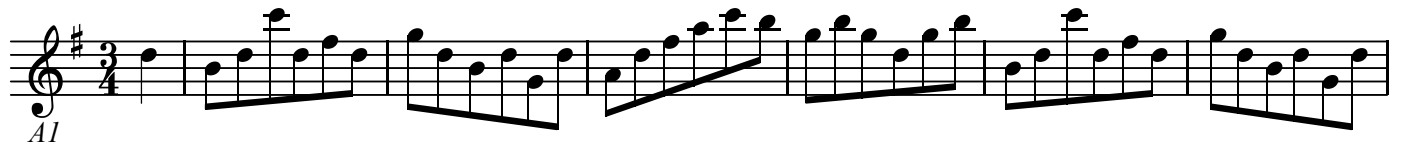
BK=4



A1

No. 6

BK=1



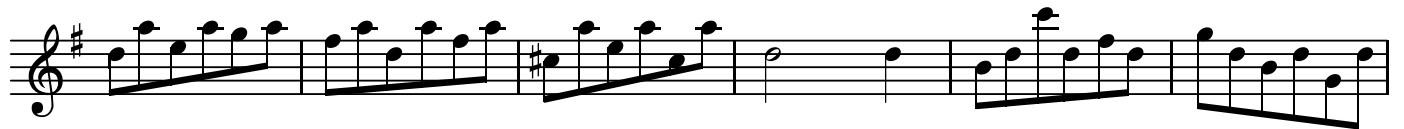
Musical notation for BK=1, starting with a treble clef, a key signature of one sharp (F#), and a 3/4 time signature. The melody consists of eighth notes and quarter notes, with some slurs and accents.

BK=2



Musical notation for BK=2, continuing the melody from BK=1. It includes a repeat sign with first and second endings, and a key signature change to two sharps (F# and C#).

BK=3



Musical notation for BK=3, continuing the melody. It features a key signature change to one sharp (F#) and includes a half note and a quarter note.

BK=4



Musical notation for BK=4, continuing the melody. It includes a key signature change to one sharp (F#) and ends with a fermata over a quarter note.

A2

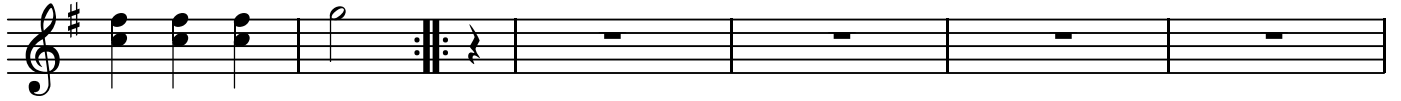
No. 6

BK=1



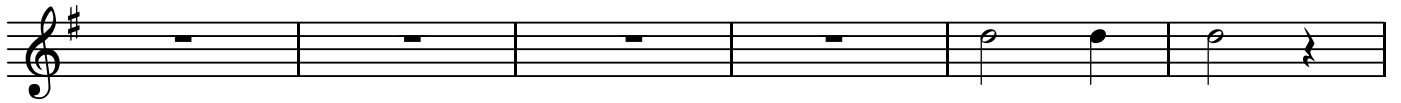
Musical staff for BK=1, featuring a treble clef, a key signature of one sharp (F#), and a 3/4 time signature. The staff contains seven measures of music: a quarter rest, a half note, a half note, a quarter rest, a quarter note, a quarter note, a quarter note, a quarter rest, a quarter rest, a half note, a half note, and a quarter rest.

BK=2



Musical staff for BK=2, featuring a treble clef, a key signature of one sharp (F#), and a 3/4 time signature. The staff contains seven measures: a quarter note, a quarter note, a quarter note, a quarter note, a quarter rest, a quarter rest, a quarter rest, a quarter rest, a quarter rest, a quarter rest, a quarter rest, and a quarter rest.

BK=3



Musical staff for BK=3, featuring a treble clef, a key signature of one sharp (F#), and a 3/4 time signature. The staff contains seven measures: a quarter rest, a quarter rest, a quarter rest, a quarter rest, a quarter rest, a quarter note, a quarter note, and a quarter rest.

BK=4

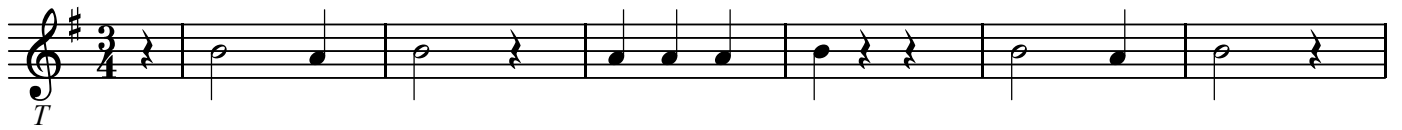


Musical staff for BK=4, featuring a treble clef, a key signature of one sharp (F#), and a 3/4 time signature. The staff contains seven measures: a quarter note, a quarter note, a quarter note, a quarter rest, a quarter rest, a quarter note, a quarter note, a quarter note, a quarter note, a quarter note, a quarter note, and a quarter note.

T

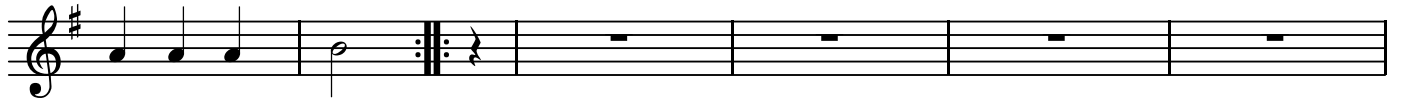
No. 6

BK=1



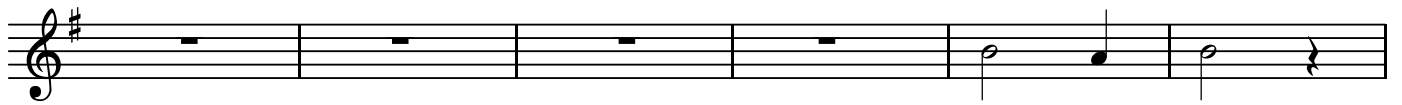
Musical staff for BK=1, featuring a treble clef, a key signature of one sharp (F#), and a 3/4 time signature. The staff contains seven measures of music: a quarter rest, a half note, a quarter note, a half note, a quarter note, a half note, and a quarter note. A dynamic marking 'T' is placed below the first measure.

BK=2



Musical staff for BK=2, featuring a treble clef, a key signature of one sharp (F#), and a 3/4 time signature. The staff contains seven measures: four measures of quarter notes (F#, G, A, B), a half note with a repeat sign, and three measures of whole rests.

BK=3



Musical staff for BK=3, featuring a treble clef, a key signature of one sharp (F#), and a 3/4 time signature. The staff contains seven measures: four measures of whole rests, a half note, a quarter note, and a quarter note.

BK=4



Musical staff for BK=4, featuring a treble clef, a key signature of one sharp (F#), and a 3/4 time signature. The staff contains seven measures: four measures of quarter notes (F#, G, A, B), a half note, a quarter note, a quarter note, a half note, and a quarter note with a fermata. The staff ends with a double bar line and repeat dots.

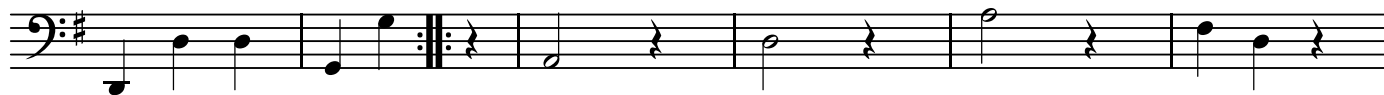
B

No. 6

BK=1



BK=2



BK=3



BK=4

