

BK=1



BK=2



BK=3



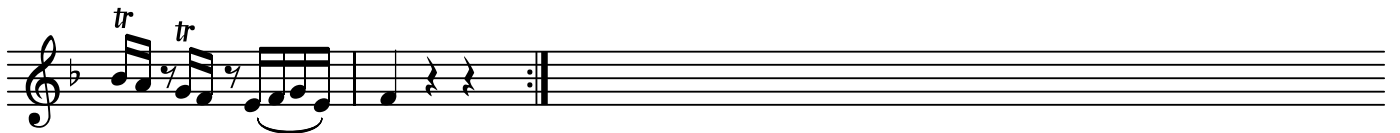
BK=4



BK=5



BK=6



A1

No. 7 KV601-1

BK=1

Musical notation for BK=1, first system. Treble clef, key signature of one flat, 3/4 time signature. The melody begins with a half note G4, followed by quarter notes A4, Bb4, and C5. It continues with a half note G4, quarter notes F4, E4, and D4. The piece then moves to a key signature of two flats (Bb major) and features several trills (tr) over eighth-note patterns. The dynamic marking *f* is present at the beginning.

BK=2

Musical notation for BK=2, second system. Treble clef, key signature of two flats, 3/4 time signature. The melody starts with a half note G4, quarter notes A4, Bb4, and C5. It then features a key signature change to one flat (F major) and continues with a half note G4, quarter notes F4, E4, and D4. The piece concludes with a half note G4 and quarter notes F4, E4, and D4. The dynamic marking *p* is present.

BK=3

Musical notation for BK=3, third system. Treble clef, key signature of one flat, 3/4 time signature. The melody begins with a half note G4, quarter notes A4, Bb4, and C5. It continues with a half note G4, quarter notes F4, E4, and D4. The piece then moves to a key signature of two flats (Bb major) and features several trills (tr) over eighth-note patterns. The dynamic marking *f* is present at the beginning, and *p* is present later in the system.

BK=4

Musical notation for BK=4, fourth system. Treble clef, key signature of one flat, 3/4 time signature. The melody begins with a half note G4, quarter notes A4, Bb4, and C5. It continues with a half note G4, quarter notes F4, E4, and D4. The piece then moves to a key signature of two flats (Bb major) and features several trills (tr) over eighth-note patterns. The dynamic marking *f* is present at the beginning.

BK=5

Musical notation for BK=5, fifth system. Treble clef, key signature of one flat, 3/4 time signature. The melody begins with a half note G4, quarter notes A4, Bb4, and C5. It continues with a half note G4, quarter notes F4, E4, and D4. The piece then moves to a key signature of two flats (Bb major) and features several trills (tr) over eighth-note patterns. The dynamic marking *f* is present at the beginning.

BK=6

Musical notation for BK=6, sixth system. Treble clef, key signature of one flat, 3/4 time signature. The melody begins with a half note G4, quarter notes A4, Bb4, and C5. It continues with a half note G4, quarter notes F4, E4, and D4. The piece then moves to a key signature of two flats (Bb major) and features several trills (tr) over eighth-note patterns. The dynamic marking *f* is present at the beginning.

BK=1

Musical staff for BK=1, starting with a treble clef, a key signature of one flat (B-flat), and a 4/4 time signature. The staff contains six measures of music. The first measure begins with a dynamic marking of *f* and an *A2* marking. The music features eighth and sixteenth notes, some with slurs and ties.

BK=2

Musical staff for BK=2, continuing from the previous staff. It features a treble clef, a key signature of one flat, and a 4/4 time signature. The music includes a trill (*T*) in the second measure, followed by a series of sixteenth-note runs. A dynamic marking of *p* is present in the third measure.

BK=3

Musical staff for BK=3, continuing from the previous staff. It features a treble clef, a key signature of one flat, and a 4/4 time signature. The music includes a trill (*A*) in the first measure, followed by a series of sixteenth-note runs. A dynamic marking of *f* is present in the first measure, and a trill (*tr*) is present in the sixth measure with a dynamic marking of *p*.

BK=4

Musical staff for BK=4, continuing from the previous staff. It features a treble clef, a key signature of one flat, and a 4/4 time signature. The music includes a trill (*tr*) in the first measure, followed by a series of sixteenth-note runs. A trill (*tr*) is present in the fifth measure.

BK=5

Musical staff for BK=5, continuing from the previous staff. It features a treble clef, a key signature of one flat, and a 4/4 time signature. The music includes a trill (*tr*) in the first measure, followed by a series of sixteenth-note runs. A trill (*tr*) is present in the fifth measure.

BK=6

Musical staff for BK=6, continuing from the previous staff. It features a treble clef, a key signature of one flat, and a 4/4 time signature. The music includes a trill (*tr*) in the first measure, followed by a series of sixteenth-note runs. A trill (*tr*) is present in the second measure.

T

No. 7 KV601-1

BK=1



BK=2



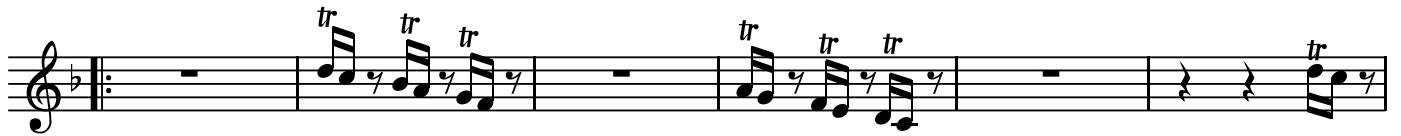
BK=3



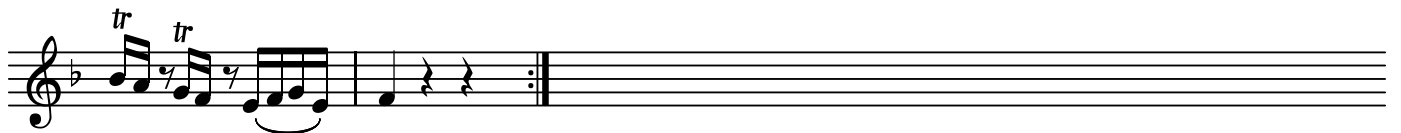
BK=4



BK=5



BK=6



B

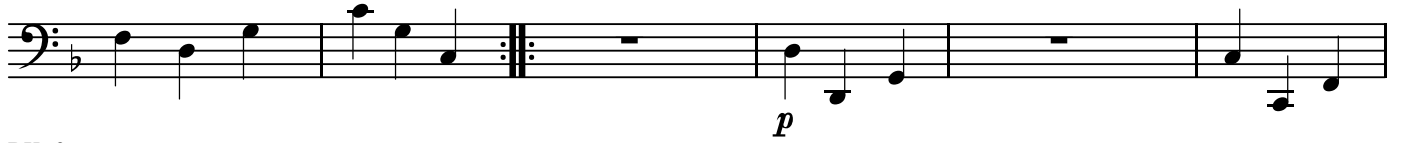
No. 7 KV601-1

BK=1



Musical staff for BK=1, bass clef, 3/4 time signature, key signature of one flat. The staff contains six measures of music. The first measure is marked with a *f* dynamic. The second measure is marked with a *B* dynamic.

BK=2



Musical staff for BK=2, bass clef, 3/4 time signature, key signature of one flat. The staff contains six measures of music. The first measure is marked with a *f* dynamic. The second measure is marked with a *B* dynamic. The staff ends with a double bar line and a repeat sign.

BK=3



Musical staff for BK=3, bass clef, 3/4 time signature, key signature of one flat. The staff contains six measures of music. The first measure is marked with a *f* dynamic. The second measure is marked with a *B* dynamic. The staff ends with a double bar line and a repeat sign.

BK=4



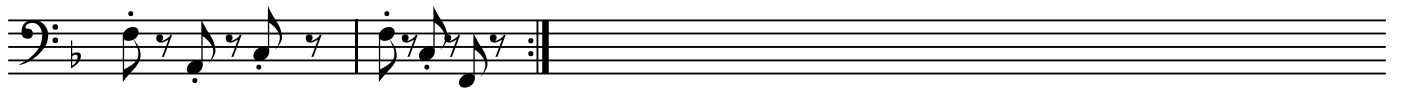
Musical staff for BK=4, bass clef, 3/4 time signature, key signature of one flat. The staff contains six measures of music. The first measure is marked with a *f* dynamic. The second measure is marked with a *B* dynamic. The staff ends with a double bar line and a repeat sign.

BK=5



Musical staff for BK=5, bass clef, 3/4 time signature, key signature of one flat. The staff contains six measures of music. The first measure is marked with a *f* dynamic. The second measure is marked with a *B* dynamic. The staff ends with a double bar line and a repeat sign.

BK=6



Musical staff for BK=6, bass clef, 3/4 time signature, key signature of one flat. The staff contains six measures of music. The first measure is marked with a *f* dynamic. The second measure is marked with a *B* dynamic. The staff ends with a double bar line and a repeat sign.

*Menuetto D.C*