

コシ・ファン・トゥッテ
第19番 女も十五になれば

BK=1 Andante



BK=2



BK=3



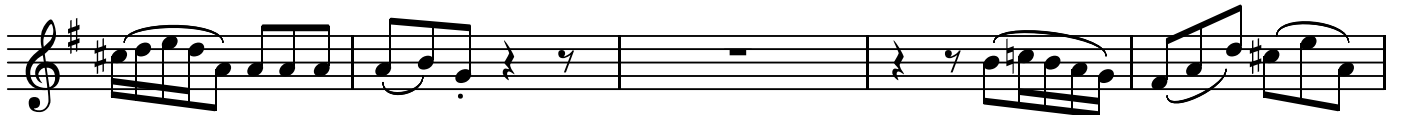
BK=4



BK=5



BK=6



BK=7



BK=8



BK=9



BK=10



BK=11



BK=12



BK=13



BK=14



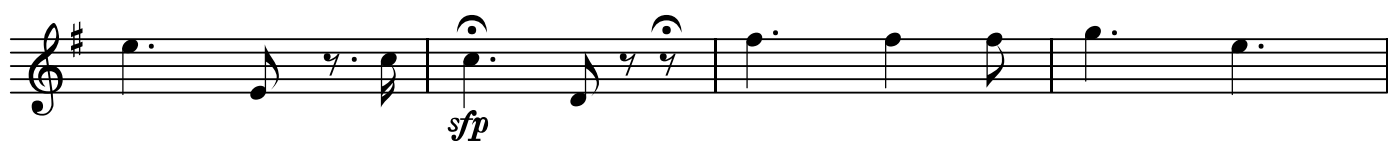
BK=15



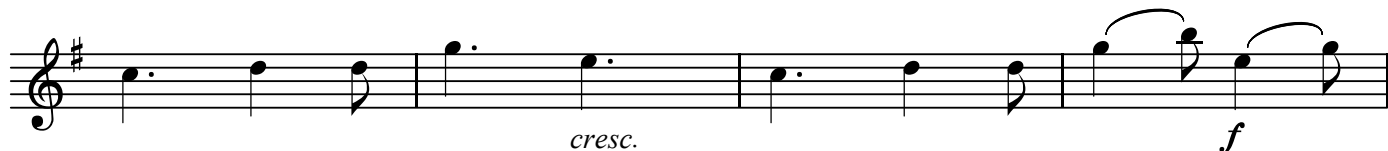
BK=16



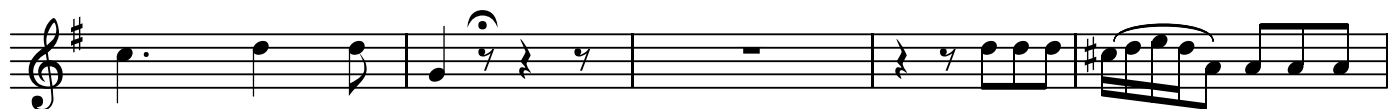
BK=17



BK=18



BK=19



BK=20



BK=21



A1

コシ・ファン・トゥッテ
第19番 女も十五になれば

BK=1

Musical staff BK=1, starting with a treble clef, a key signature of one sharp (F#), and a 6/8 time signature. The staff contains a melodic line with various note values and rests. A dynamic marking of *p* is placed below the first measure. The label "A1" is written below the first measure.

BK=2

Musical staff BK=2, continuing the melodic line from the previous staff.

BK=3

Musical staff BK=3, continuing the melodic line.

BK=4

Musical staff BK=4, continuing the melodic line.

BK=5

Musical staff BK=5, continuing the melodic line. A dynamic marking of *p* is placed below the first measure.

BK=6

Musical staff BK=6, continuing the melodic line.

BK=7

Musical staff BK=7, continuing the melodic line.

BK=8

Musical staff BK=8, continuing the melodic line. A double bar line with repeat dots is present. Dynamic markings of *f* and *p* are placed below the first and last measures respectively.

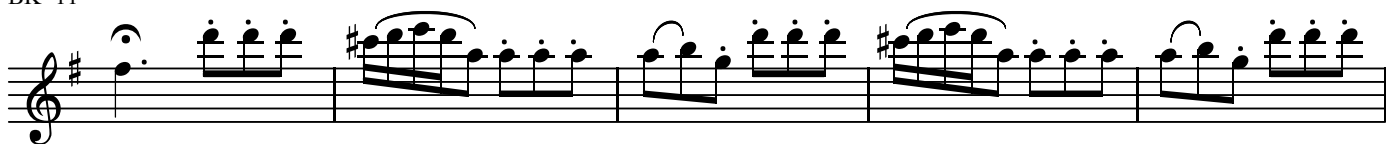
BK=9

Musical staff BK=9, continuing the melodic line.

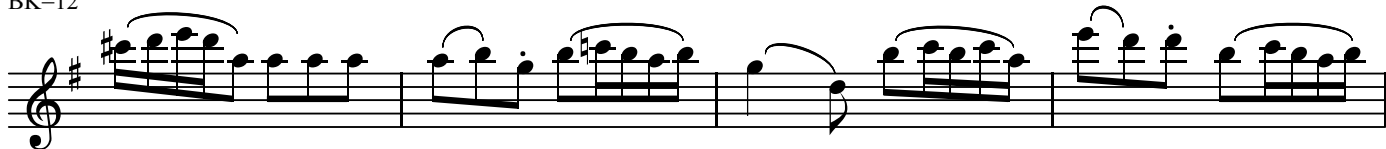
BK=10

Musical staff BK=10, continuing the melodic line.

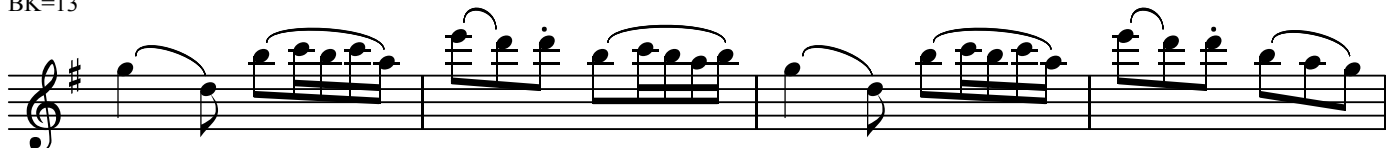
BK=11



BK=12



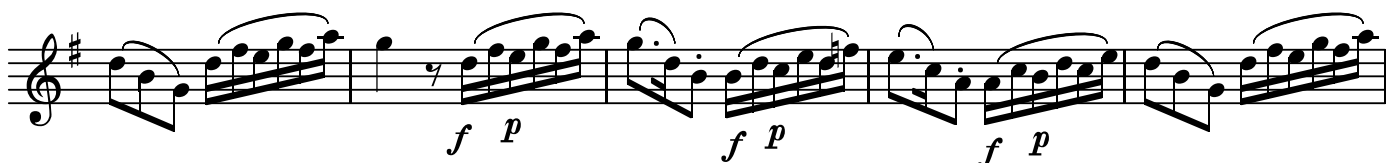
BK=13



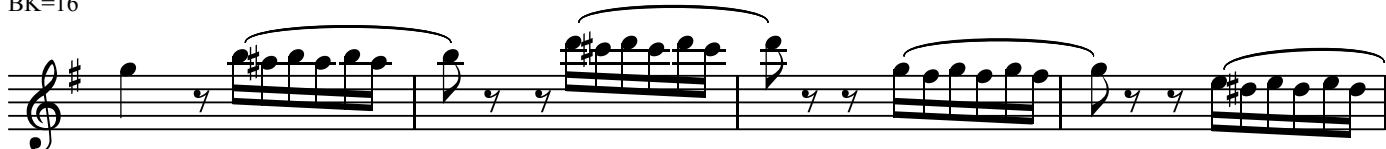
BK=14



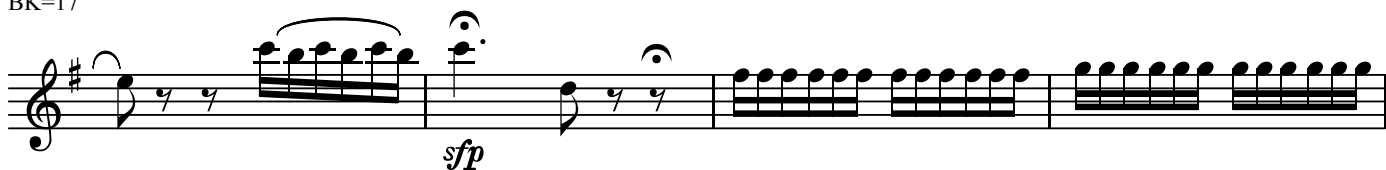
BK=15



BK=16



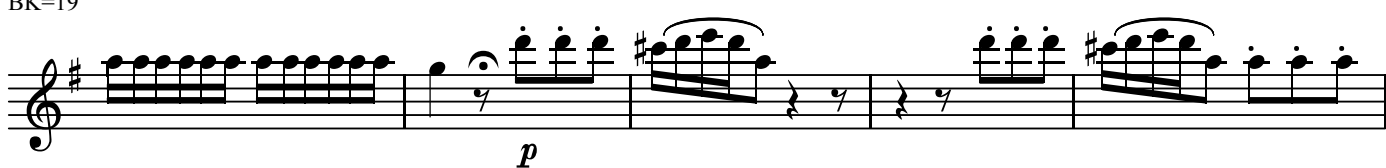
BK=17



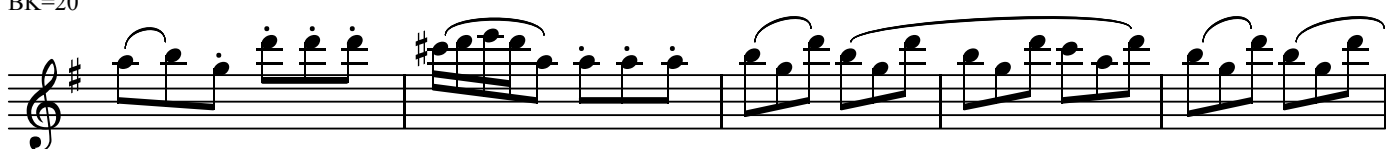
BK=18



BK=19



BK=20



BK=21



コシ・ファン・トゥッテ
第19番 女も十五になれば

BK=1

Musical staff BK=1, starting with a treble clef, a key signature of one sharp (F#), and a 6/8 time signature. The music begins with a rest followed by eighth notes. A dynamic marking of *p* is present. The staff contains five measures of music.

BK=2

Musical staff BK=2, continuing the melody with eighth notes and quarter notes. It includes a whole rest for one measure.

BK=3

Musical staff BK=3, featuring a whole rest for the first measure, followed by eighth notes and quarter notes.

BK=4

Musical staff BK=4, continuing the melody with eighth notes and quarter notes.

BK=5

Musical staff BK=5, featuring a treble clef, a key signature of one sharp, and a 6/8 time signature. The music starts with a half note followed by eighth notes. A dynamic marking of *p* is present.

BK=6

Musical staff BK=6, continuing the melody with eighth notes and quarter notes.

BK=7

Musical staff BK=7, continuing the melody with eighth notes and quarter notes.

BK=8

Musical staff BK=8, featuring a treble clef, a key signature of one sharp, and a 6/8 time signature. The music includes dynamic markings of *f* and *p*. It contains five measures of music.

BK=9

Musical staff BK=9, continuing the melody with eighth notes and quarter notes.

BK=10

Musical staff BK=10, featuring a treble clef, a key signature of one sharp, and a 6/8 time signature. The music includes a sixteenth-note triplet and dynamic markings of *f* and *p*. It contains five measures of music.

BK=11

BK=12

BK=13

BK=14

BK=15

BK=16

BK=17

BK=18

BK=19

BK=20

BK=21



T

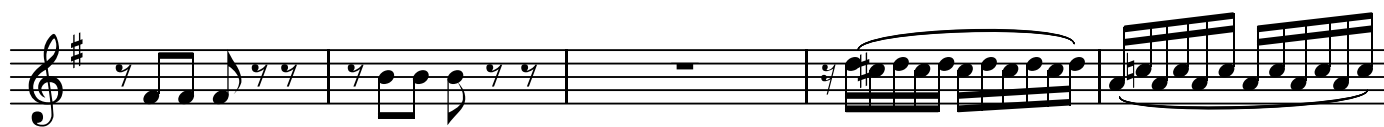
コシ・ファン・トゥッテ
第19番 女も十五になれば

BK=1



Musical notation for BK=1, starting with a treble clef, a key signature of one sharp (F#), and a 6/8 time signature. The first measure contains a quarter note G4, a quarter rest, and an eighth note G4. The second measure contains a quarter note A4, a quarter note B4, and a quarter note C5. The third measure contains a quarter note B4, a quarter note A4, and a quarter note G4. The fourth measure contains a quarter note F#4, a quarter note E4, and a quarter note D4. The fifth and sixth measures are whole rests. Dynamics include a forte (*f*) marking under the first measure and a *T* marking under the first measure.

BK=2



Musical notation for BK=2, continuing the melody. It features eighth and sixteenth note patterns, including a triplet of eighth notes. The piece concludes with a sixteenth-note flourish. Dynamics include a *f* marking under the first measure.

BK=3



Musical notation for BK=3, featuring a continuous eighth-note accompaniment pattern. Dynamics include a *f* marking under the first measure.

BK=4



Musical notation for BK=4, continuing the eighth-note accompaniment. Dynamics include a *f* marking under the first measure.

BK=5



Musical notation for BK=5, featuring a melodic line with a fermata over the first note. Dynamics include a piano (*p*) marking under the first measure.

BK=6



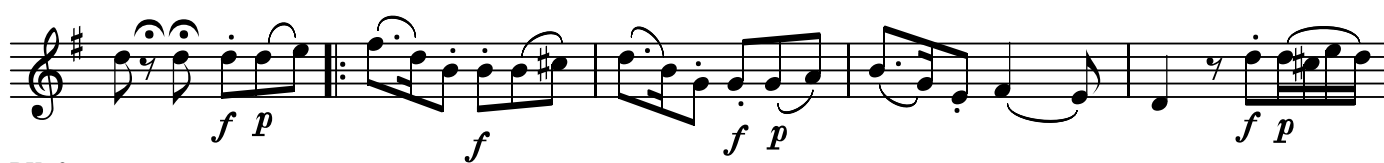
Musical notation for BK=6, continuing the eighth-note accompaniment. Dynamics include a *f* marking under the first measure.

BK=7



Musical notation for BK=7, continuing the eighth-note accompaniment. Dynamics include a *f* marking under the first measure.

BK=8



Musical notation for BK=8, featuring a melodic line with slurs and accents. Dynamics include *f p* markings under the first, second, third, and fourth measures.

BK=9



Musical notation for BK=9, continuing the melodic line with slurs and accents. Dynamics include *f p* markings under the first and second measures.

BK=10



Musical notation for BK=10, featuring a melodic line with slurs and accents. Dynamics include *f p* markings under the first and second measures.

BK=11



BK=12



BK=13



BK=14



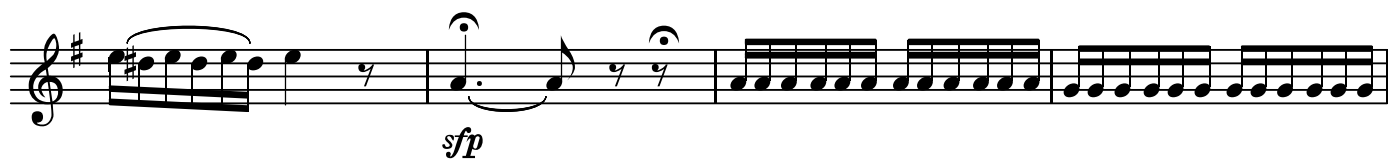
BK=15



BK=16



BK=17



BK=18



BK=19



BK=20



BK=21



B

コシ・ファン・トゥッテ
第19番 女も十五になれば

BK=1



Musical notation for BK=1, starting with a bass clef, a key signature of one sharp (F#), and a 6/8 time signature. The first measure contains a whole note G2, followed by a quarter rest. The second measure contains a quarter note G2, a quarter note A2, and a quarter note B2. The third measure contains a quarter note B2, a quarter note A2, and a quarter note G2. The fourth measure contains a quarter note G2, a quarter note F#2, and a quarter note E2. The fifth measure contains a quarter note D2, a quarter note C2, and a quarter note B1. The sixth measure contains a quarter note A1, a quarter note G1, and a quarter note F#1. The piece begins with a dynamic marking of *f*.

BK=2



Musical notation for BK=2, continuing the bass line with eighth notes and quarter notes.

BK=3



Musical notation for BK=3, featuring a half note G2, a quarter note A2, and a quarter note B2, followed by eighth notes.

BK=4



Musical notation for BK=4, continuing the bass line with eighth notes and quarter notes.

BK=5



Musical notation for BK=5, starting with a half note G2 with a fermata, followed by eighth notes. The piece ends with a dynamic marking of *p*.

BK=6



Musical notation for BK=6, continuing the bass line with eighth notes and quarter notes.

BK=7



Musical notation for BK=7, continuing the bass line with eighth notes and quarter notes.

BK=8



Musical notation for BK=8, starting with a half note G2 with a fermata, followed by a double bar line and a repeat sign, then a quarter note G2, a quarter note A2, and a quarter note B2.

BK=9



Musical notation for BK=9, starting with a double bar line and a repeat sign, then a quarter note G2, a quarter note A2, and a quarter note B2, followed by eighth notes.

BK=10



Musical notation for BK=10, continuing the bass line with eighth notes and quarter notes.

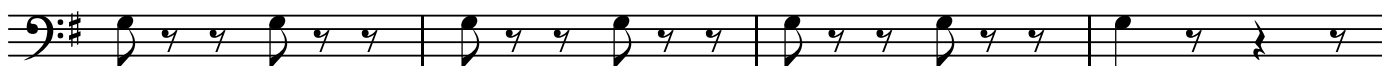
BK=11



BK=12



BK=13



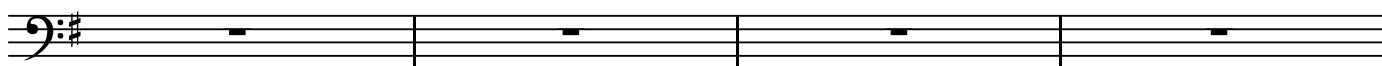
BK=14



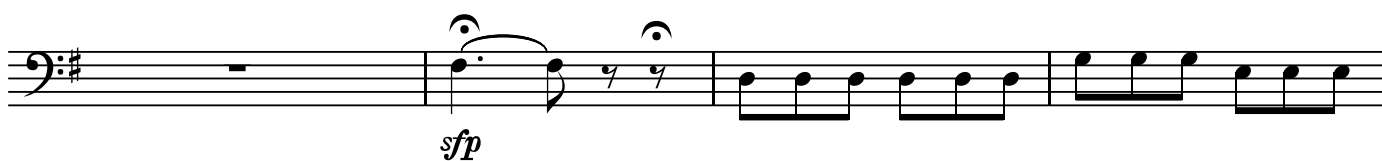
BK=15



BK=16



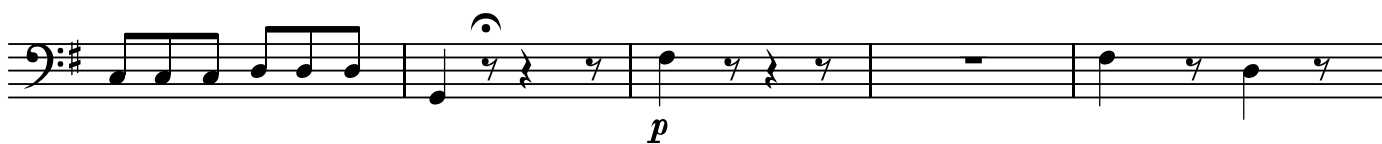
BK=17



BK=18



BK=19



BK=20



BK=21

