

コシ・ファン・トゥッテ
第14番 岩のように動かずに

BK=1 Allegro



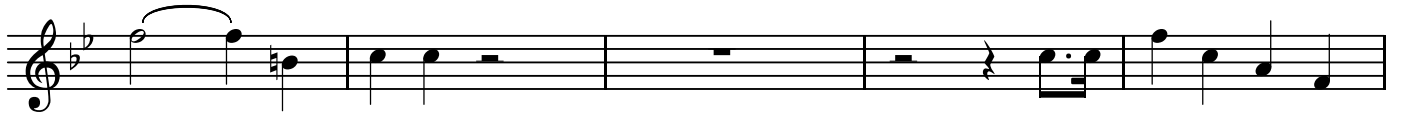
BK=2



BK=3



BK=4



BK=5



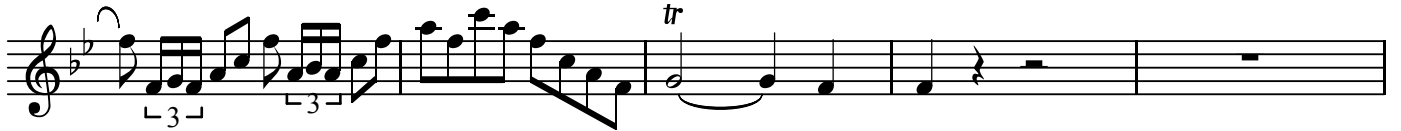
BK=6



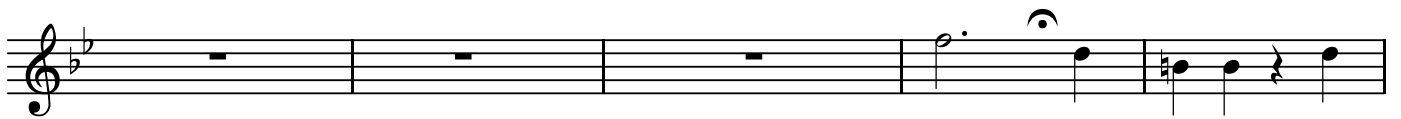
BK=7



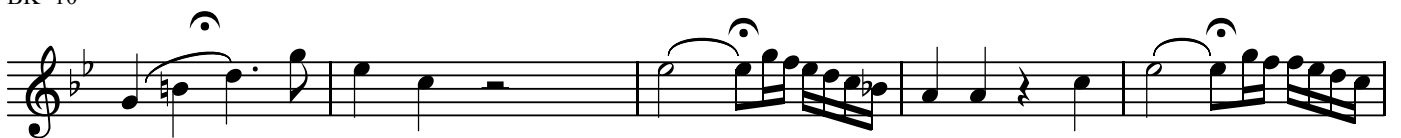
BK=8



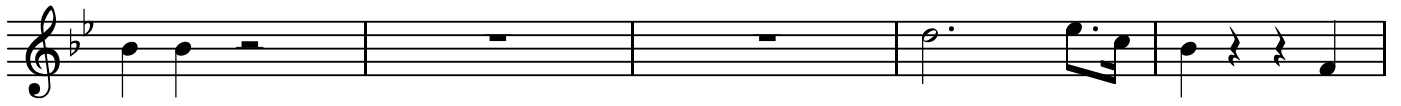
BK=9



BK=10



BK=11



BK=12



BK=13



A1

コシ・ファン・トゥッテ
第14番 岩のように動かずに

BK=1

Musical staff for BK=1, starting with a treble clef, a key signature of one flat (B-flat), and a common time signature (C). The staff contains a whole rest followed by a series of notes with slurs and accents. The dynamic marking *mp* is placed below the staff.

BK=2

Musical staff for BK=2, continuing the piece with a treble clef, one flat key signature, and common time. It features a series of eighth notes with slurs and accents.

BK=3

Musical staff for BK=3, continuing with a treble clef, one flat key signature, and common time. It features a series of eighth notes with slurs and accents. The dynamic marking *cresc.* is placed at the end of the staff.

BK=4

Musical staff for BK=4, continuing with a treble clef, one flat key signature, and common time. It features a series of eighth notes with slurs and accents, including a triplet. The dynamic markings *f*, *p*, and *f* are placed below the staff.

BK=5

Musical staff for BK=5, continuing with a treble clef, one flat key signature, and common time. It features a series of eighth notes with slurs and accents, including a triplet. The dynamic markings *p*, *f*, and *p* are placed below the staff.

BK=6

Musical staff for BK=6, continuing with a treble clef, one flat key signature, and common time. It features a series of eighth notes with slurs and accents, including a triplet. The dynamic marking *f* is placed below the staff.

BK=7

Musical staff for BK=7, continuing with a treble clef, one flat key signature, and common time. It features a series of eighth notes with slurs and accents, including a triplet. The dynamic markings *fp*, *fp*, *cresc.*, and *p* are placed below the staff.

BK=8

Musical staff for BK=8, continuing with a treble clef, one flat key signature, and common time. It features a series of eighth notes with slurs and accents, including a triplet. The dynamic markings *cresc.* and *f* are placed below the staff.

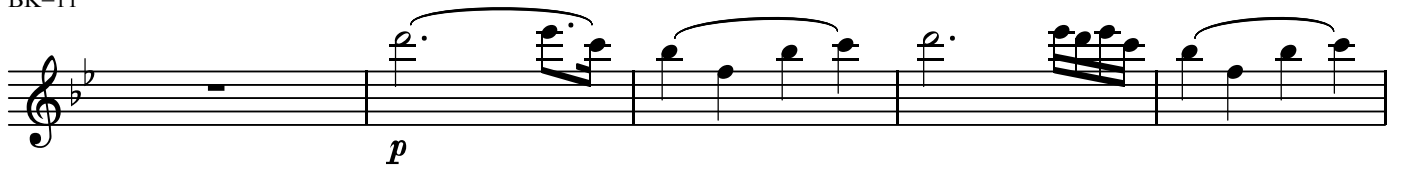
BK=9

Musical staff for BK=9, continuing with a treble clef, one flat key signature, and common time. It features a series of eighth notes with slurs and accents, including a triplet. The dynamic marking *f* is placed below the staff.

BK=10

Musical staff for BK=10, continuing with a treble clef, one flat key signature, and common time. It features a series of eighth notes with slurs and accents, including a triplet. The dynamic marking *f* is placed below the staff.

BK=11



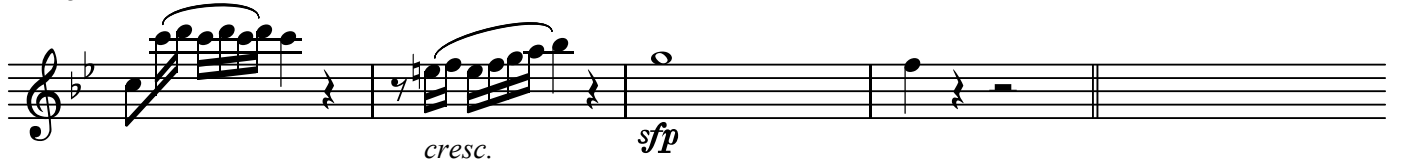
Musical staff for BK=11, starting with a whole rest. The melody begins with a half note G4, followed by a quarter note A4, and a quarter note Bb4. The next measure contains a quarter note C5, a quarter note Bb4, and a quarter note A4. The following measure has a quarter note G4, a quarter note F4, and a quarter note E4. The final measure consists of a quarter note D4, a quarter note C4, and a quarter note B3. A dynamic marking of *p* is placed below the first measure.

BK=12



Musical staff for BK=12. It begins with a half note G4, followed by a quarter note A4, and a quarter note Bb4. The next measure contains a quarter note C5, a quarter note Bb4, and a quarter note A4. The following measure has a quarter note G4, a quarter note F4, and a quarter note E4. The final measure consists of a quarter note D4, a quarter note C4, and a quarter note B3.

BK=13



Musical staff for BK=13. It begins with a half note G4, followed by a quarter note A4, and a quarter note Bb4. The next measure contains a quarter note C5, a quarter note Bb4, and a quarter note A4. The following measure has a quarter note G4, a quarter note F4, and a quarter note E4. The final measure consists of a quarter note D4, a quarter note C4, and a quarter note B3. Dynamic markings of *cresc.* and *fp* are placed below the first and second measures, respectively.

コシ・ファン・トゥッテ
第14番 岩のように動かずに

BK=1

Musical staff for BK=1, starting with a treble clef, a key signature of two flats (B-flat and E-flat), and a common time signature (C). The music begins with a half note G4, followed by quarter notes A4 and B4, and a half note C5. The dynamic marking *mp* is present. The staff continues with a series of eighth and sixteenth notes, ending with a quarter rest.

BK=2

Musical staff for BK=2, continuing the melody with eighth and sixteenth notes, including a half note G4 and quarter notes A4 and B4.

BK=3

Musical staff for BK=3, featuring quarter notes and eighth notes, ending with a sixteenth-note flourish. The dynamic marking *cresc.* is present.

BK=4

Musical staff for BK=4, consisting of a series of eighth notes. The dynamic markings *f* and *p* are present.

BK=5

Musical staff for BK=5, continuing the eighth-note pattern with some chromatic movement.

BK=6

Musical staff for BK=6, featuring eighth notes and quarter notes, ending with a half note G4. The dynamic marking *f* is present.

BK=7

Musical staff for BK=7, featuring eighth notes and quarter notes. The dynamic markings *fp*, *fp*, *cresc.*, and *p* are present. There are two triplet markings (3) over the final eighth notes.

BK=8

Musical staff for BK=8, featuring eighth notes and quarter notes. The dynamic markings *cresc.* and *f* are present.

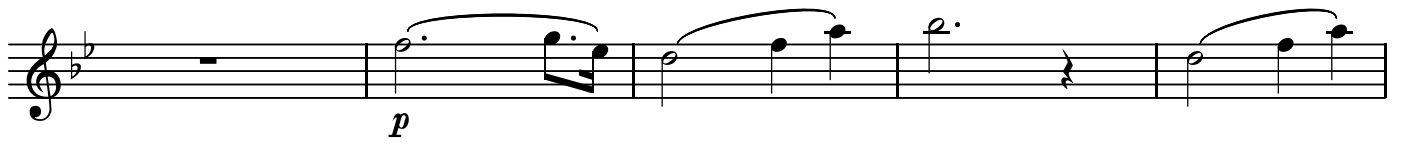
BK=9

Musical staff for BK=9, featuring eighth notes and quarter notes, ending with a half note G4. The dynamic marking *f* is present.

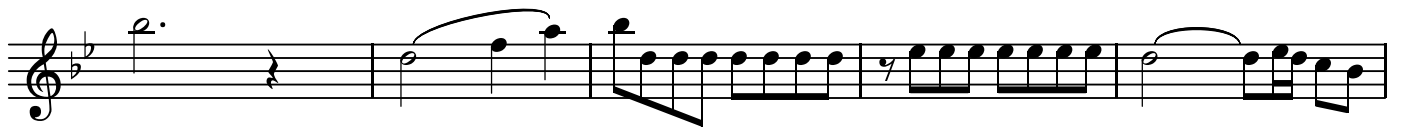
BK=10

Musical staff for BK=10, featuring eighth notes and quarter notes, ending with a half note G4. The dynamic marking *f* is present.

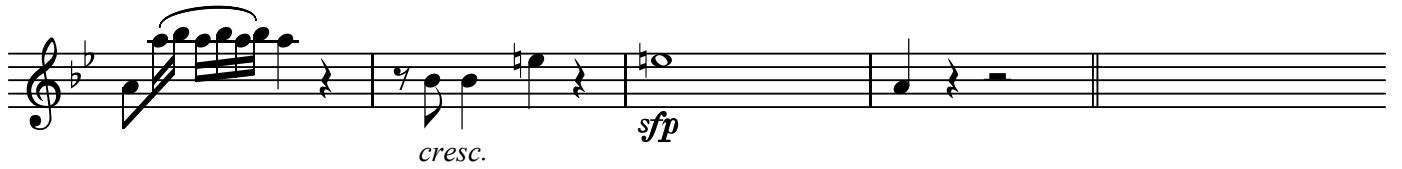
BK=11



BK=12



BK=13



T

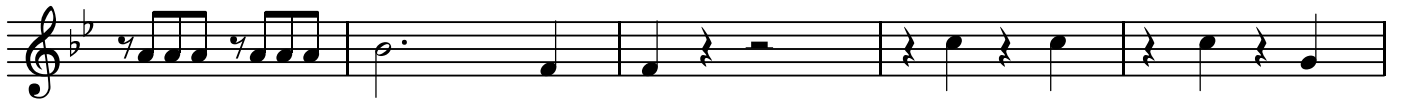
コシ・ファン・トゥッテ
第14番 岩のように動かずに

BK=1



Musical notation for BK=1, starting with a treble clef, a key signature of two flats, and a common time signature. The first measure contains a triplet of eighth notes. Dynamics include *T* and *mp*.

BK=2



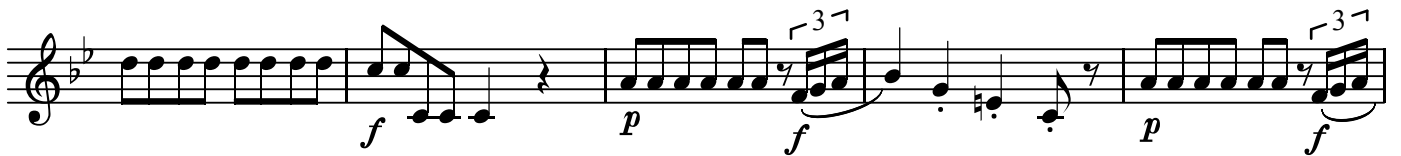
Musical notation for BK=2, continuing the piece with eighth notes and quarter notes.

BK=3



Musical notation for BK=3, featuring quarter notes and a *cresc.* marking at the end.

BK=4



Musical notation for BK=4, including a triplet of eighth notes and dynamics *f*, *p*, and *f*.

BK=5



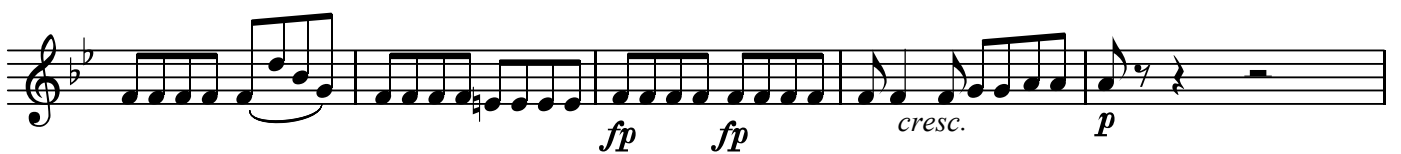
Musical notation for BK=5, featuring a triplet of eighth notes and dynamics *p* and *f*.

BK=6



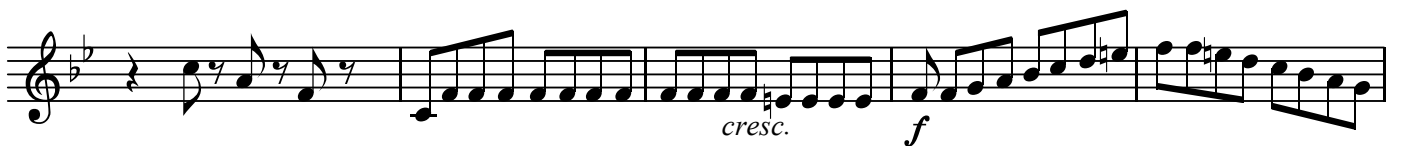
Musical notation for BK=6, including a triplet of eighth notes and a fermata.

BK=7



Musical notation for BK=7, featuring sixteenth notes and dynamics *fp*, *fp*, *cresc.*, and *p*.

BK=8



Musical notation for BK=8, including a triplet of eighth notes and dynamics *cresc.* and *f*.

BK=9



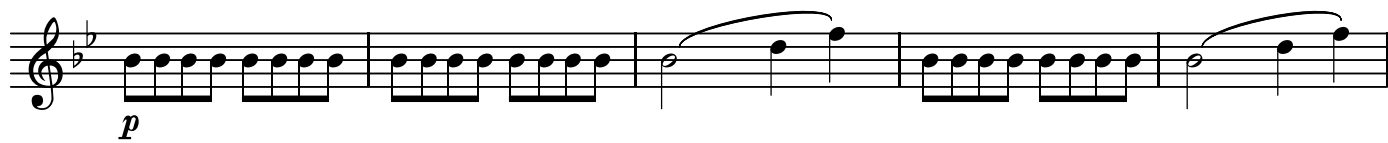
Musical notation for BK=9, featuring sixteenth notes and a fermata.

BK=10



Musical notation for BK=10, including a triplet of eighth notes and a fermata.

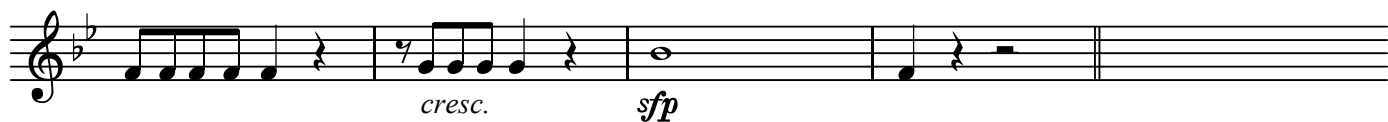
BK=11



BK=12



BK=13



B

コシ・ファン・トゥッテ
第14番 岩のように動かずに

BK=1



Musical notation for BK=1, bass clef, common time, starting with a *B* dynamic and *mp* marking.

BK=2



Musical notation for BK=2, bass clef, common time.

BK=3



Musical notation for BK=3, bass clef, common time, ending with a *cresc.* marking.

BK=4



Musical notation for BK=4, bass clef, common time, featuring *f* and *p* dynamics.

BK=5



Musical notation for BK=5, bass clef, common time.

BK=6



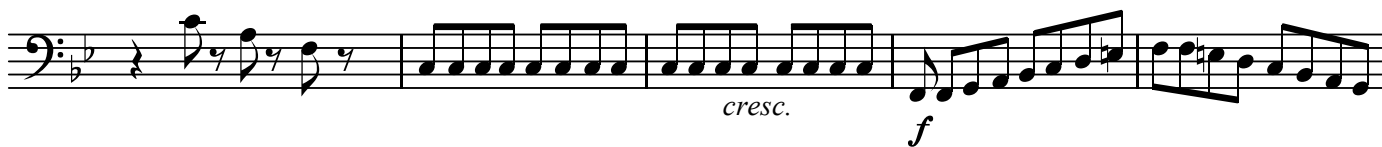
Musical notation for BK=6, bass clef, common time, featuring a fermata.

BK=7



Musical notation for BK=7, bass clef, common time, featuring *fp*, *fp*, *cresc.*, and *p* markings.

BK=8



Musical notation for BK=8, bass clef, common time, featuring a *cresc.* marking and a *f* dynamic.

BK=9



Musical notation for BK=9, bass clef, common time, featuring a fermata.

BK=10

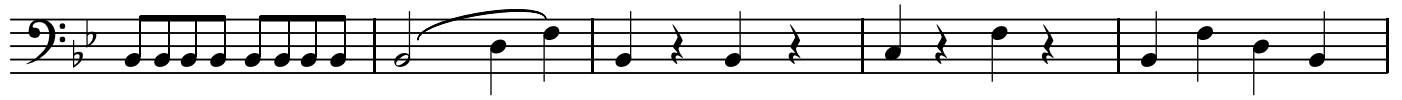


Musical notation for BK=10, bass clef, common time, featuring a fermata.

BK=11



BK=12



BK=13

