

コシ・ファン・トゥッテ  
第12番 男たちに、兵隊たちに

BK=1

Allegretto



BK=2



BK=3



BK=4



BK=5

Allegretto



BK=6



BK=7



BK=8



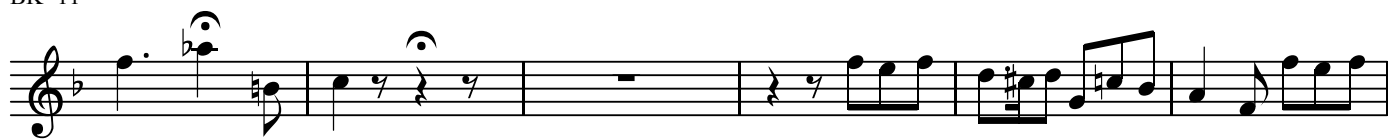
BK=9



BK=10



BK=11



BK=12



BK=13



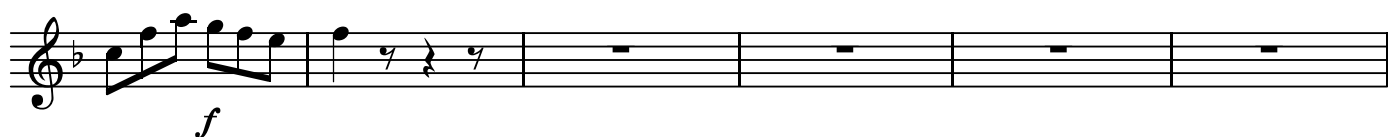
BK=14



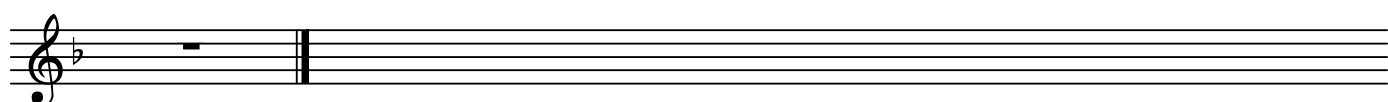
BK=15



BK=16



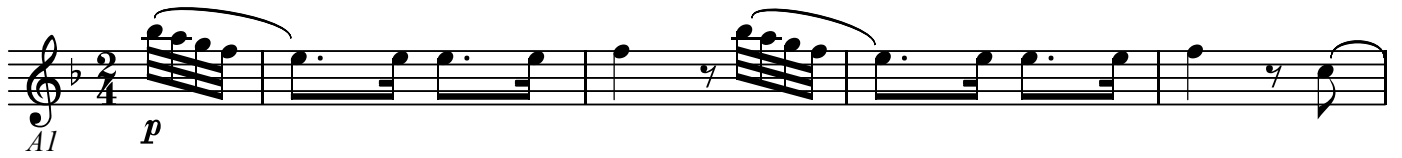
BK=17



A1

コシ・ファン・トゥッテ  
第12番 男たちに、兵隊たちに

BK=1



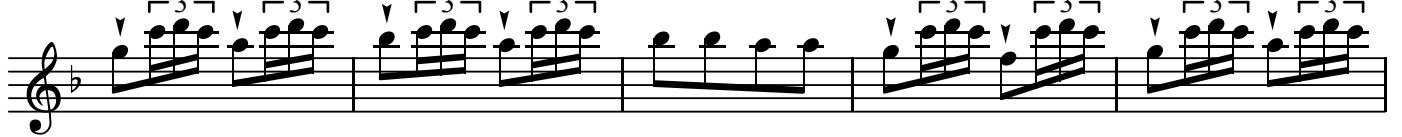
Musical notation for BK=1, starting with a treble clef, a key signature of one flat, and a 2/4 time signature. The piece begins with a dynamic marking of *p*. The notation includes a series of eighth notes and quarter notes, with some notes beamed together.

BK=2



Musical notation for BK=2, continuing the melody with eighth and quarter notes. It features a triplet of eighth notes in the final measure.

BK=3



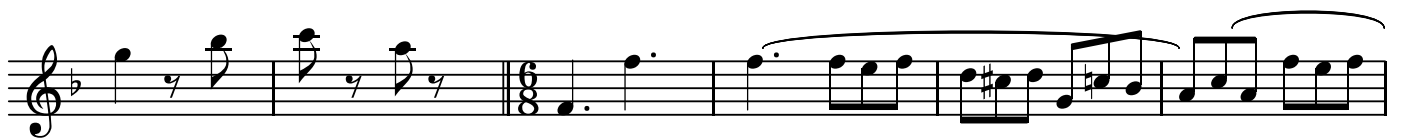
Musical notation for BK=3, featuring a complex rhythmic pattern with multiple triplet markings over eighth notes.

BK=4



Musical notation for BK=4, continuing the triplet patterns and moving into a more melodic line with eighth and quarter notes.

BK=5



Musical notation for BK=5, showing a change in time signature to 6/8. The notation includes a series of eighth notes and quarter notes.

BK=6



Musical notation for BK=6, featuring a melodic line with eighth and quarter notes, including a triplet of eighth notes.

BK=7



Musical notation for BK=7, featuring a complex rhythmic pattern with eighth notes and quarter notes, including a triplet.

BK=8




Musical notation for BK=8, featuring a melodic line with eighth and quarter notes, including a triplet.

BK=9



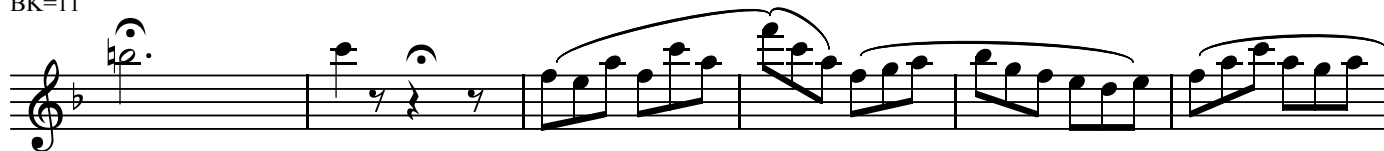
Musical notation for BK=9, featuring a complex rhythmic pattern with eighth notes and quarter notes, including a triplet.

BK=10



Musical notation for BK=10, featuring a melodic line with eighth and quarter notes, including a triplet.

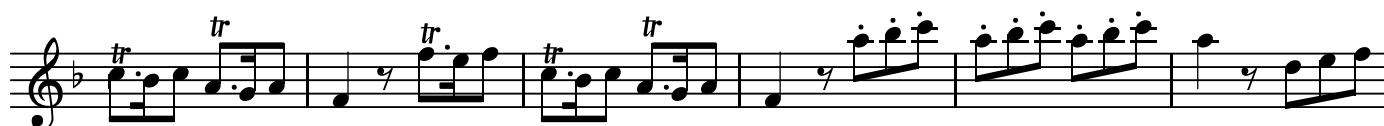
BK=11



BK=12



BK=13



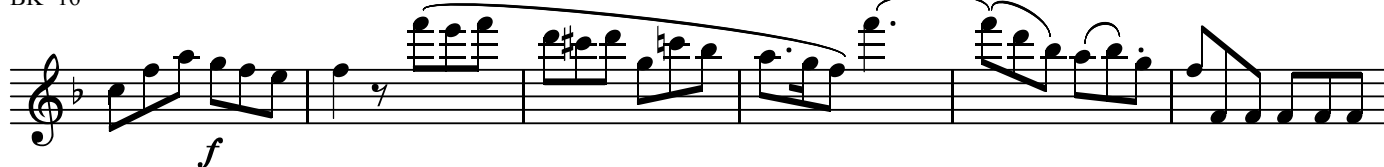
BK=14



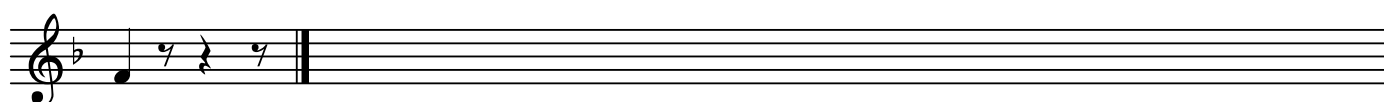
BK=15



BK=16



BK=17



コシ・ファン・トゥッテ  
第12番 男たちに、兵隊たちに

BK=1

BK=2

BK=3

BK=4

BK=5

BK=6

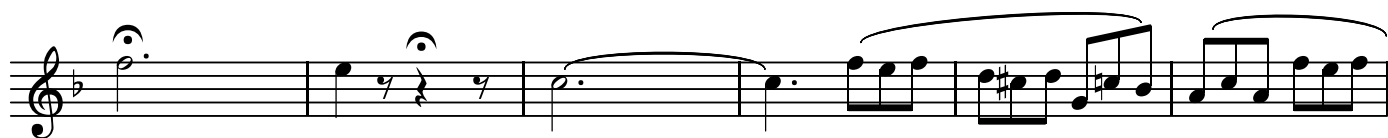
BK=7

BK=8

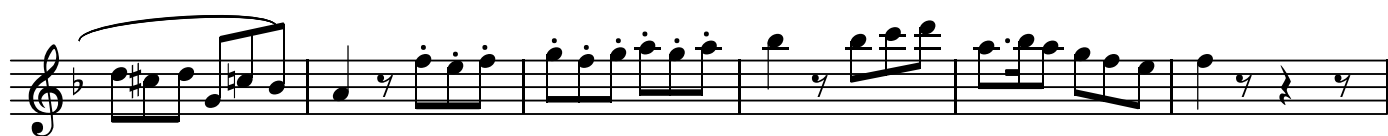
BK=9

BK=10

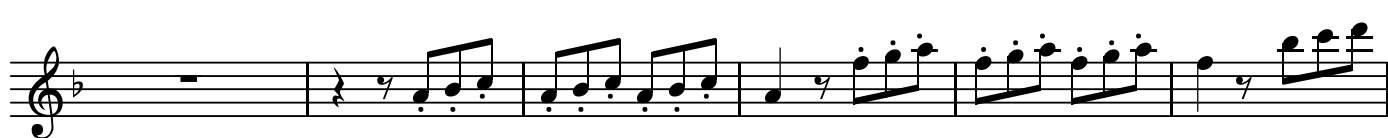
BK=11



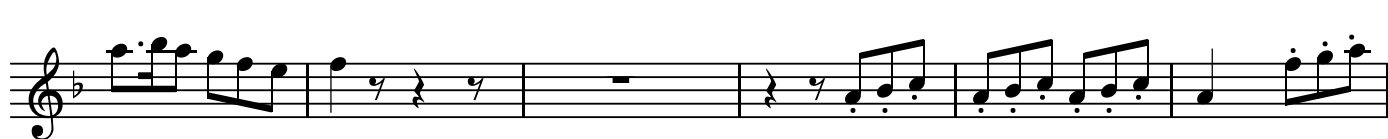
BK=12



BK=13



BK=14



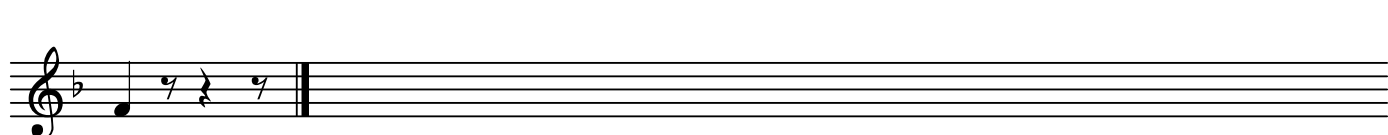
BK=15



BK=16



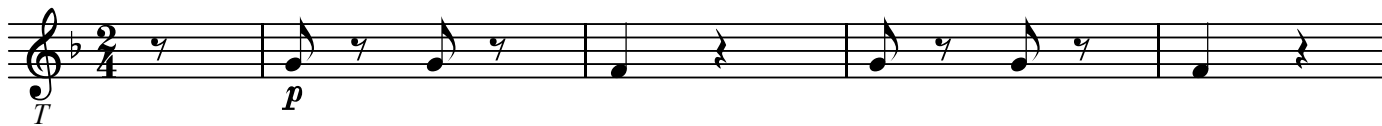
BK=17



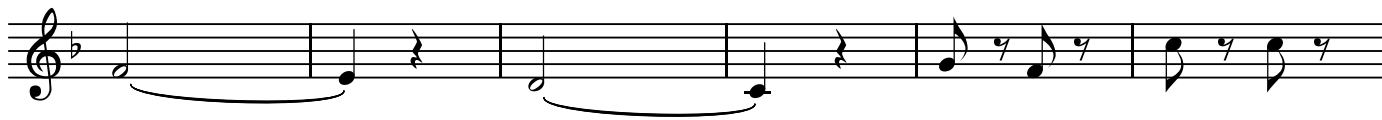
T

コシ・ファン・トゥッテ  
第12番 男たちに、兵隊たちに

BK=1



BK=2



BK=3



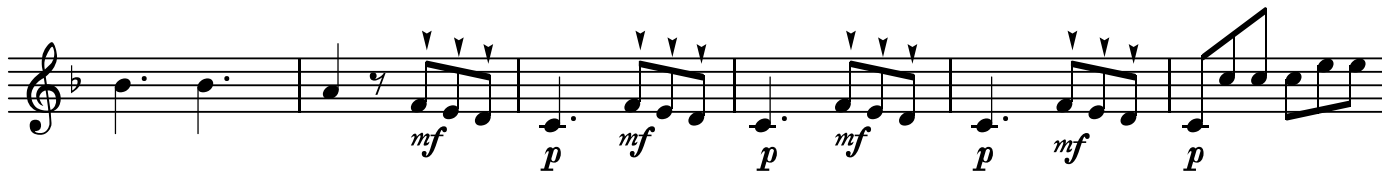
BK=4



BK=5



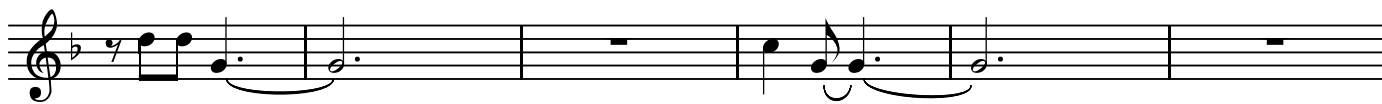
BK=6



BK=7



BK=8



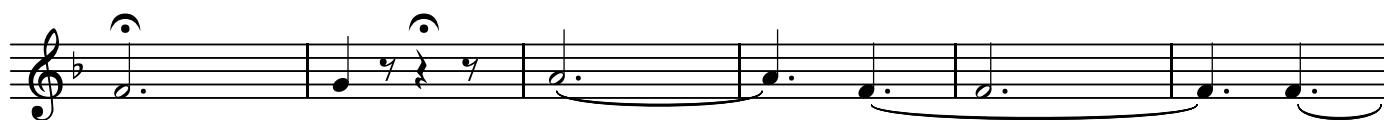
BK=9



BK=10



BK=11



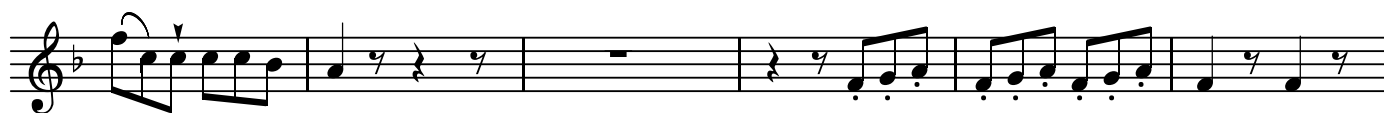
BK=12



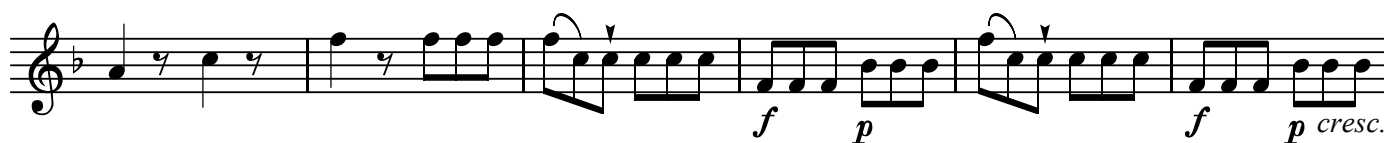
BK=13



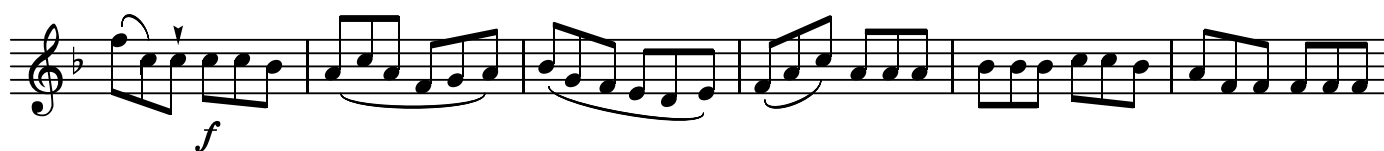
BK=14



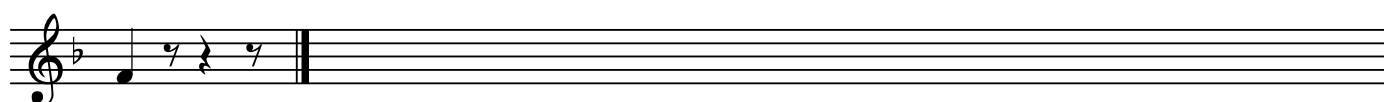
BK=15



BK=16



BK=17

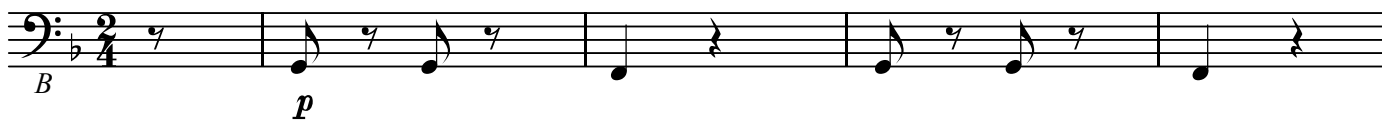




B

コシ・ファン・トゥッテ  
第12番 男たちに、兵隊たちに

BK=1



Musical notation for BK=1, bass clef, 2/4 time signature. The first measure has a dynamic marking *B*. The second measure has a dynamic marking *p*.

BK=2



Musical notation for BK=2, bass clef, 2/4 time signature.

BK=3



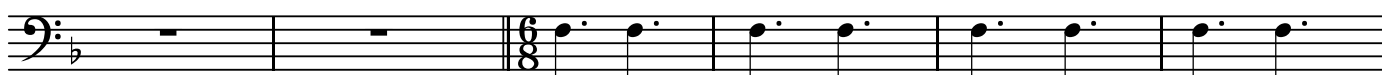
Musical notation for BK=3, bass clef, 2/4 time signature.

BK=4



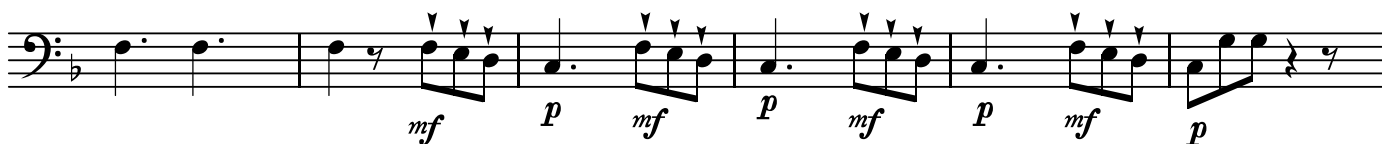
Musical notation for BK=4, bass clef, 2/4 time signature.

BK=5



Musical notation for BK=5, bass clef, 2/4 time signature. The first two measures are rests. The third measure has a time signature change to 6/8.

BK=6



Musical notation for BK=6, bass clef, 6/8 time signature. The notation includes dynamic markings *mf* and *p* alternating.

BK=7



Musical notation for BK=7, bass clef, 6/8 time signature.

BK=8



Musical notation for BK=8, bass clef, 6/8 time signature.

BK=9



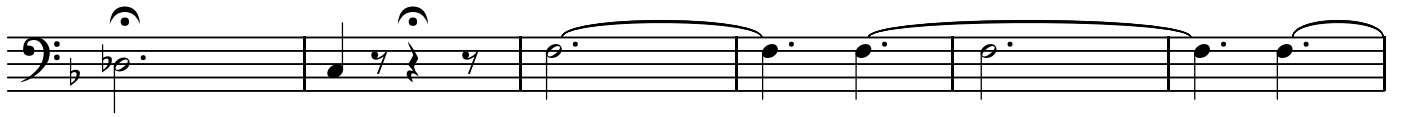
Musical notation for BK=9, bass clef, 6/8 time signature.

BK=10



Musical notation for BK=10, bass clef, 6/8 time signature.

BK=11



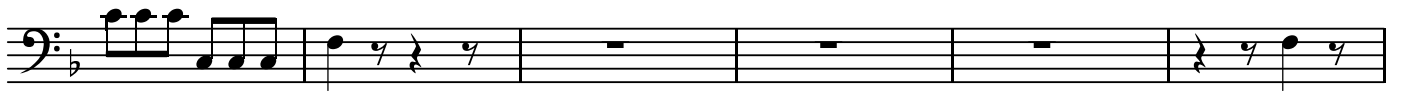
BK=12



BK=13



BK=14



BK=15



BK=16



BK=17

