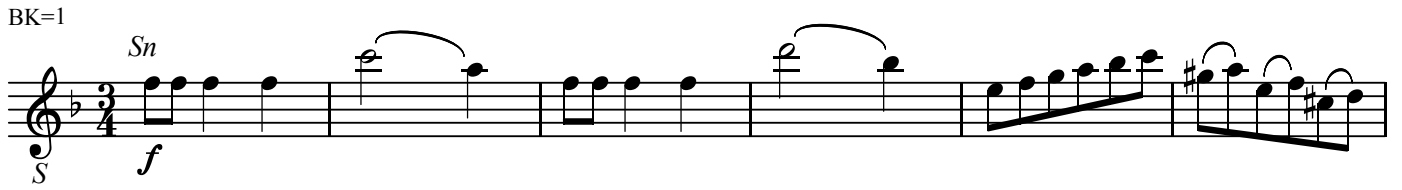
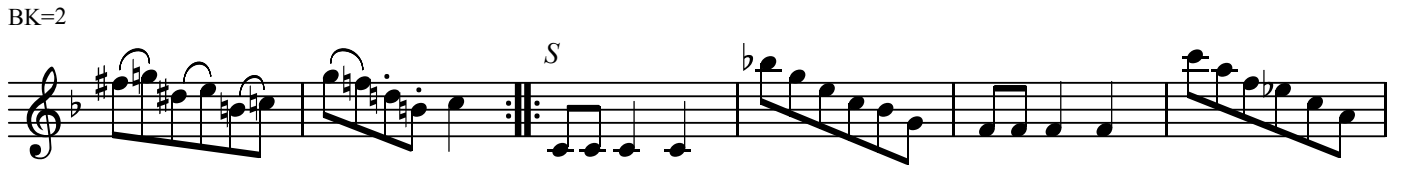


BK=1



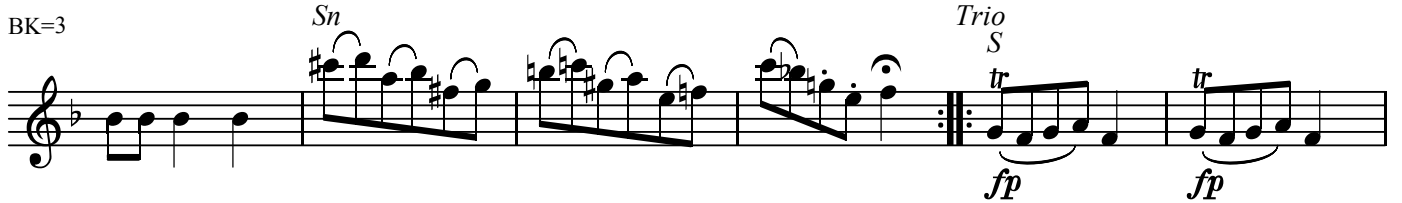
Musical notation for BK=1, featuring a treble clef, a key signature of one flat, and a 3/4 time signature. The notation includes a dynamic marking of *f* and a *Sn* (snare drum) marking above the staff. The music consists of eighth and sixteenth notes with various articulations.

BK=2



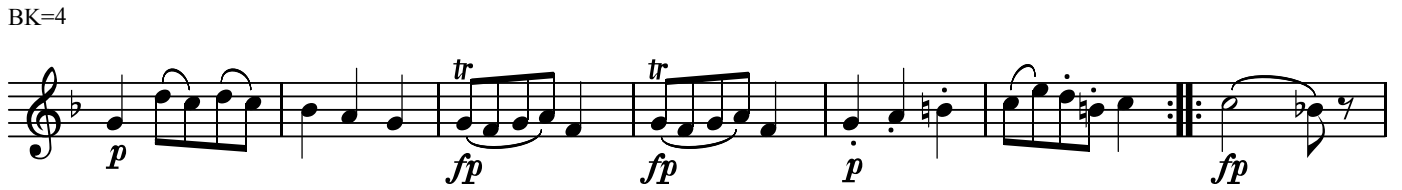
Musical notation for BK=2, featuring a treble clef, a key signature of one flat, and a 3/4 time signature. The notation includes a dynamic marking of *f* and a *S* (soprano) marking above the staff. The music consists of eighth and sixteenth notes with various articulations.

BK=3



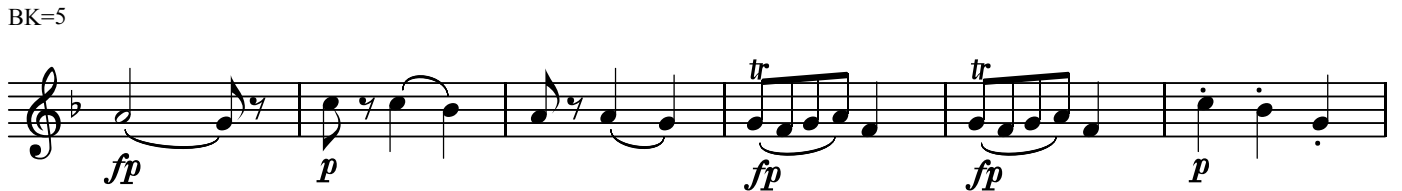
Musical notation for BK=3, featuring a treble clef, a key signature of one flat, and a 3/4 time signature. The notation includes dynamic markings of *f* and *fp*, and markings for *Sn* (snare drum) and *Trio S* (Trio Soprano). The music consists of eighth and sixteenth notes with various articulations.

BK=4



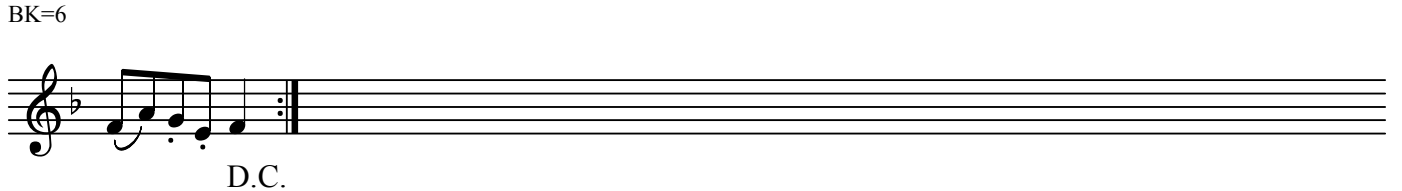
Musical notation for BK=4, featuring a treble clef, a key signature of one flat, and a 3/4 time signature. The notation includes dynamic markings of *p*, *fp*, and *p*, and a *tr* (trill) marking above the staff. The music consists of eighth and sixteenth notes with various articulations.

BK=5



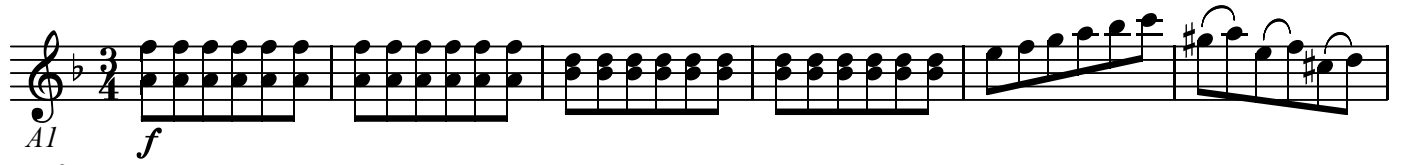
Musical notation for BK=5, featuring a treble clef, a key signature of one flat, and a 3/4 time signature. The notation includes dynamic markings of *fp*, *p*, *fp*, *fp*, and *p*, and a *tr* (trill) marking above the staff. The music consists of eighth and sixteenth notes with various articulations.

BK=6



Musical notation for BK=6, featuring a treble clef, a key signature of one flat, and a 3/4 time signature. The notation includes a dynamic marking of *f* and a *D.C.* (Da Capo) marking below the staff. The music consists of eighth and sixteenth notes with various articulations.

BK=1



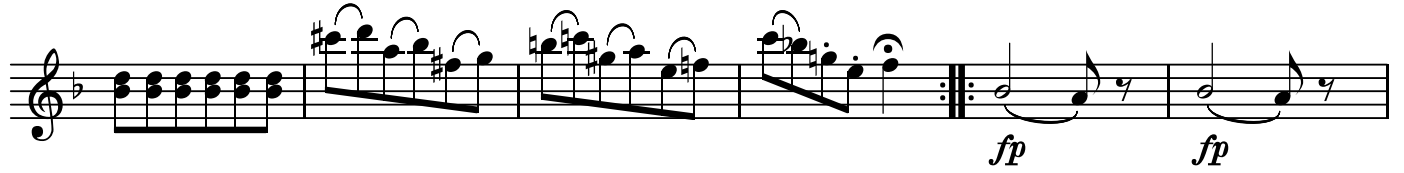
Musical staff for BK=1, starting with a treble clef, a key signature of one flat (B-flat), and a 3/4 time signature. The music begins with a forte (*f*) dynamic. The first four measures consist of a steady eighth-note accompaniment. The fifth measure features a melodic line with a sharp sign, and the sixth measure continues with a melodic line ending in a sharp sign.

BK=2



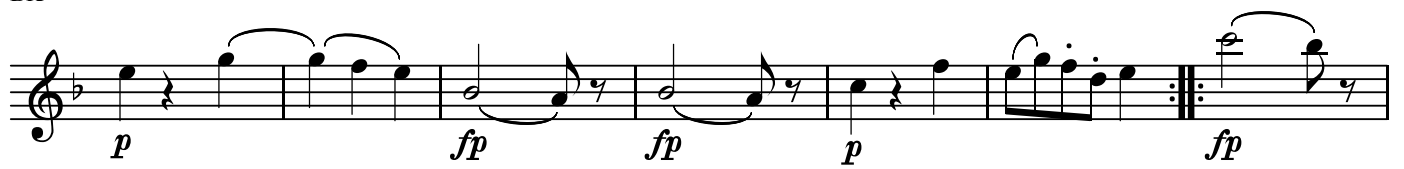
Musical staff for BK=2, continuing the piece. It features a melodic line with a sharp sign, followed by a repeat sign. The music then returns to the eighth-note accompaniment pattern.

BK=3



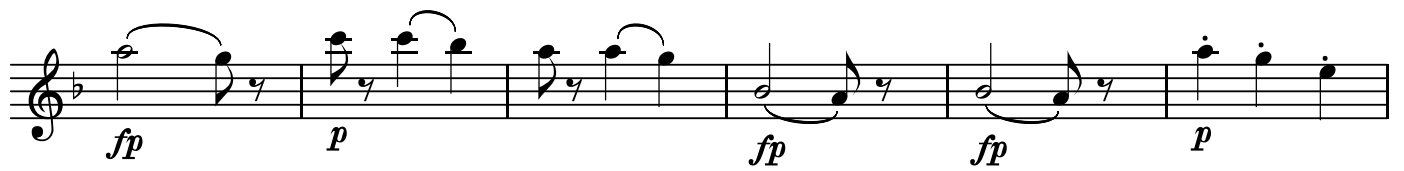
Musical staff for BK=3, continuing the piece. It features a melodic line with a sharp sign, followed by a repeat sign. The music then continues with a melodic line and a forte-piano (*fp*) dynamic.

BK=4



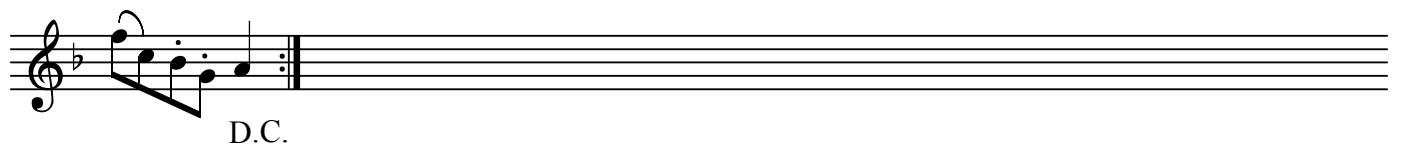
Musical staff for BK=4, continuing the piece. It features a melodic line with a forte-piano (*fp*) dynamic, followed by a piano (*p*) dynamic, and then a forte-piano (*fp*) dynamic.

BK=5



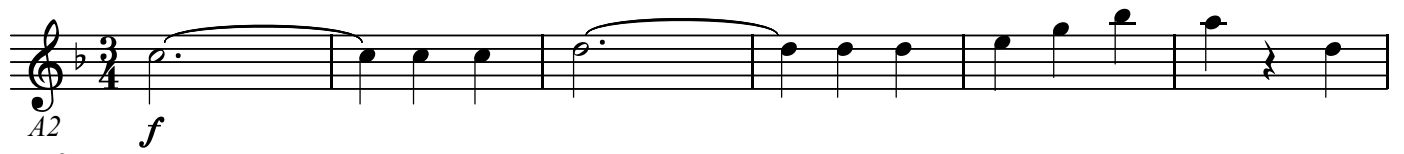
Musical staff for BK=5, continuing the piece. It features a melodic line with a forte-piano (*fp*) dynamic, followed by a piano (*p*) dynamic, and then a forte-piano (*fp*) dynamic.

BK=6



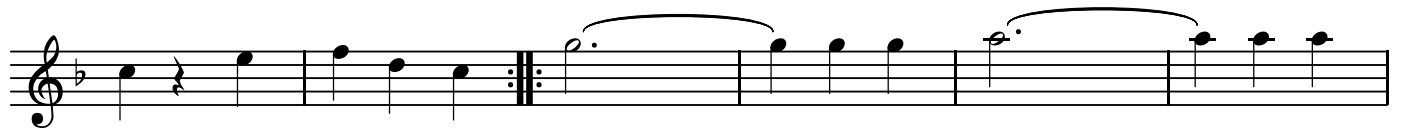
Musical staff for BK=6, continuing the piece. It features a melodic line with a forte-piano (*fp*) dynamic, followed by a piano (*p*) dynamic, and then a forte-piano (*fp*) dynamic. The staff ends with a double bar line and the instruction "D.C." (Da Capo).

BK=1



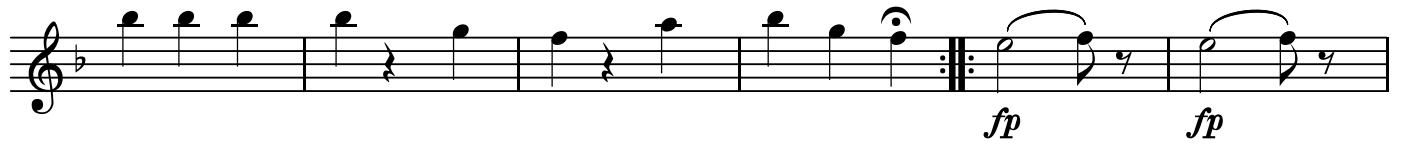
Musical staff for BK=1, starting with a treble clef, a key signature of one flat (B-flat), and a 3/4 time signature. The music begins with a forte (*f*) dynamic. The staff contains a sequence of notes: a dotted quarter note, followed by eighth notes, and a half note, all under a slur. A repeat sign is present at the end of the staff.

BK=2



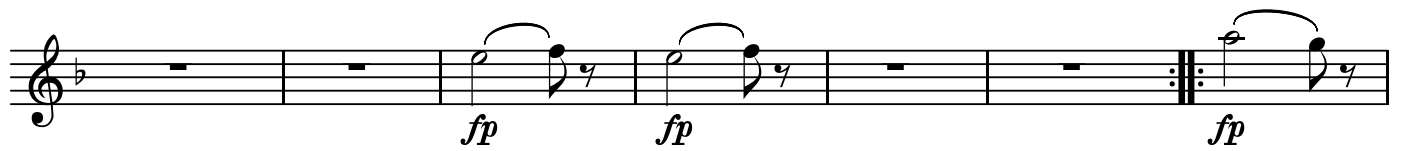
Musical staff for BK=2, continuing from BK=1. It features a repeat sign followed by a half note, eighth notes, and a quarter note, all under a slur.

BK=3



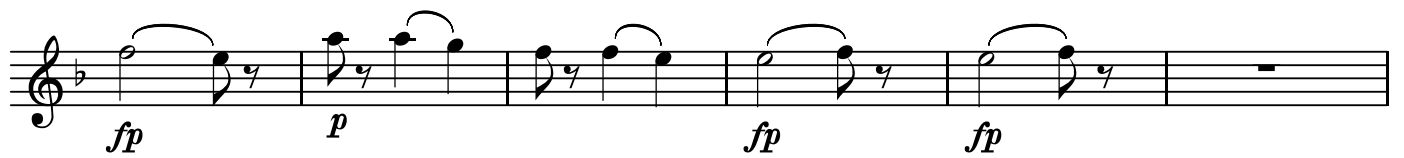
Musical staff for BK=3, featuring eighth notes and quarter notes. It includes a repeat sign and two instances of the dynamic *fp* (fortissimo piano).

BK=4



Musical staff for BK=4, featuring quarter notes and eighth notes. It includes a repeat sign and three instances of the dynamic *fp*.

BK=5



Musical staff for BK=5, featuring eighth notes and quarter notes. It includes dynamics *fp* and *p* (piano).

BK=6



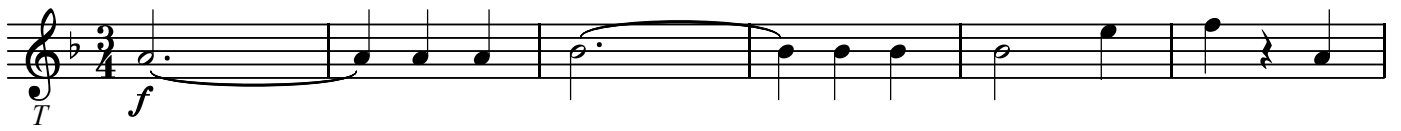
Musical staff for BK=6, consisting of a whole rest followed by a repeat sign.

D.C.

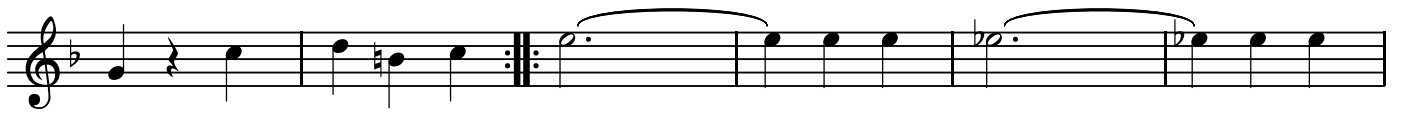
T

No. 10

BK=1



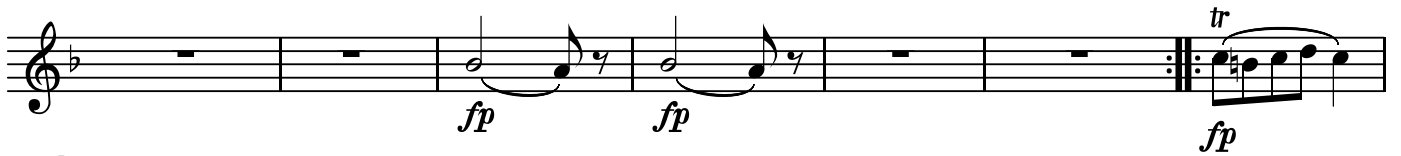
BK=2



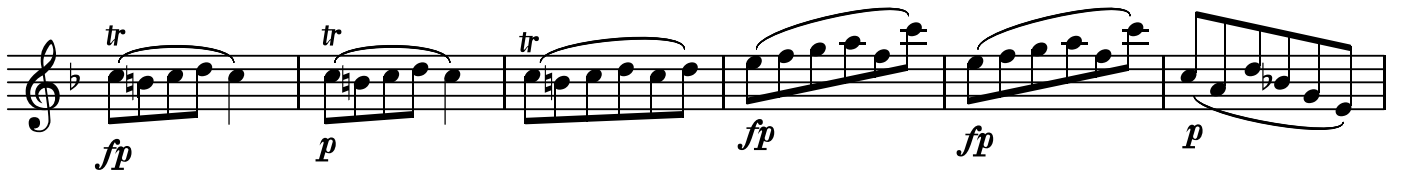
BK=3



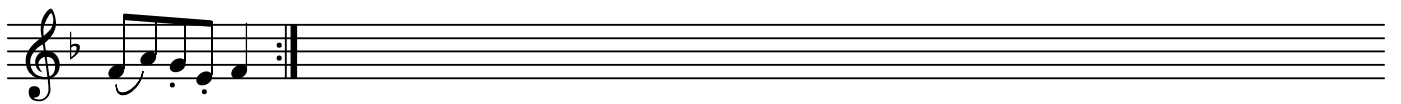
BK=4



BK=5



BK=6



D.C.

B

No. 10

BK=1

Musical staff for BK=1, bass clef, 3/4 time signature, key signature of one flat. The staff contains a sequence of eighth and quarter notes. A dynamic marking *f* is placed below the first measure. A section marker *B* is located below the first measure.

BK=2

Musical staff for BK=2, bass clef, 3/4 time signature, key signature of one flat. The staff contains a sequence of eighth and quarter notes. A section marker *B* is located below the first measure.

BK=3

Musical staff for BK=3, bass clef, 3/4 time signature, key signature of one flat. The staff contains a sequence of eighth and quarter notes. A section marker *B* is located below the first measure. Dynamic markings *fp* are placed below the final two measures.

BK=4

Musical staff for BK=4, bass clef, 3/4 time signature, key signature of one flat. The staff contains a sequence of eighth and quarter notes. Dynamic markings *p* and *fp* are placed below the first, third, and fourth measures. A section marker *B* is located below the first measure.

BK=5

Musical staff for BK=5, bass clef, 3/4 time signature, key signature of one flat. The staff contains a sequence of eighth and quarter notes. Dynamic markings *fp* and *p* are placed below the final three measures.

BK=6

Musical staff for BK=6, bass clef, 3/4 time signature, key signature of one flat. The staff contains a sequence of eighth and quarter notes. A section marker *B* is located below the first measure. The text "D.C." is written below the staff.