

BK=1

Musical staff for BK=1, starting with a treble clef, a key signature of one flat, and a 3/4 time signature. The staff contains a sequence of notes with dynamic markings *p* and *f*, and trills marked *tr*.

BK=2

Musical staff for BK=2, continuing the sequence with dynamic markings *f* and *p*, and trills marked *tr*.

BK=3

Musical staff for BK=3, featuring a section labeled *Trio* with dynamic markings *f* and *p*, and trills marked *tr*.

BK=4

Musical staff for BK=4, featuring dynamic markings *f* and trills marked *tr*.

BK=5

Musical staff for BK=5, featuring dynamic markings *p* and ending with the instruction *D.C.*

BK=1

Musical staff for BK=1, 3/4 time signature. It begins with a treble clef and a key signature of one flat. The notation includes a piano (*p*) dynamic, followed by a forte (*f*) dynamic with trills (*tr*) over the final notes. The staff contains a sequence of eighth and sixteenth notes with various articulations.

BK=2

Musical staff for BK=2, 3/4 time signature. It begins with a treble clef and a key signature of one flat. The notation includes a piano (*p*) dynamic, followed by a forte (*f*) dynamic with trills (*tr*) over the final notes. The staff contains a sequence of eighth and sixteenth notes with various articulations.

BK=3

Musical staff for BK=3, 3/4 time signature. It begins with a treble clef and a key signature of one flat. The notation includes a forte (*f*) dynamic, followed by a piano (*p*) dynamic, and then another forte (*f*) dynamic with a piano (*p*) dynamic. The staff contains a sequence of eighth and sixteenth notes with various articulations.

BK=4

Musical staff for BK=4, 3/4 time signature. It begins with a treble clef and a key signature of one flat. The notation includes a forte (*f*) dynamic. The staff contains a sequence of eighth and sixteenth notes with various articulations.

BK=5

Musical staff for BK=5, 3/4 time signature. It begins with a treble clef and a key signature of one flat. The notation includes a piano (*p*) dynamic. The staff contains a sequence of eighth and sixteenth notes with various articulations.

D.C.

BK=1

Musical staff for BK=1, starting with a treble clef and a 3/4 time signature. The key signature has one flat. The staff contains a melodic line with a dynamic marking of *p* (piano) at the beginning and *f* (forte) later. The notation includes eighth notes, quarter notes, and a half note.

BK=2

Musical staff for BK=2, continuing the melodic line from BK=1. It features a repeat sign and a dynamic marking of *f* (forte).

BK=3

Musical staff for BK=3, featuring a melodic line with a dynamic marking of *p* (piano). The notation includes eighth notes, quarter notes, and a half note.

BK=4

Musical staff for BK=4, featuring a melodic line with a dynamic marking of *f* (forte). The notation includes eighth notes, quarter notes, and a half note.

BK=5

Musical staff for BK=5, featuring a melodic line with a dynamic marking of *p* (piano). The notation includes eighth notes, quarter notes, and a half note. The staff ends with a double bar line and a repeat sign.

D.C.

T

No. 11

BK=1

Musical staff for BK=1, starting with a treble clef, a key signature of one flat (B-flat), and a 3/4 time signature. The staff contains a melodic line with dynamics *p* and *f*. The notation includes eighth and sixteenth notes, some beamed together, and rests.

BK=2

Musical staff for BK=2, continuing the melodic line from BK=1. It features a repeat sign and a dynamic marking of *f*.

BK=3

Musical staff for BK=3, continuing the melodic line. It includes a repeat sign and a dynamic marking of *p*.

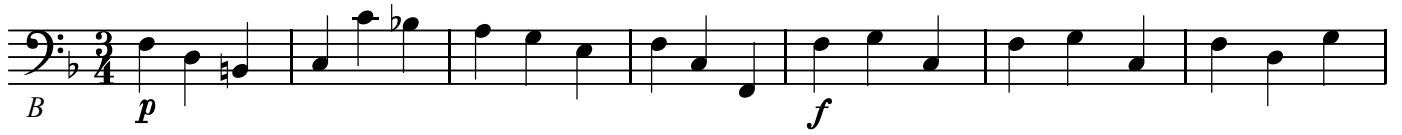
BK=4

Musical staff for BK=4, continuing the melodic line. It includes a repeat sign and a dynamic marking of *f*.

BK=5

Musical staff for BK=5, continuing the melodic line. It includes a dynamic marking of *p* and ends with the instruction "D.C." (Da Capo).

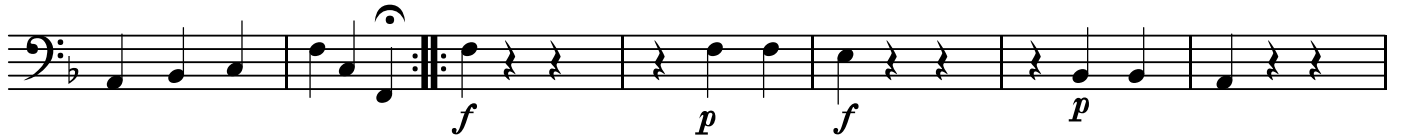
BK=1



BK=2



BK=3



BK=4



BK=5

