

A1

四声のカノン「わが太陽はかくれ」 KV557

W.A.Mozart

BK=1 Adagio

Musical staff for BK=1, starting with the tempo marking Adagio. The staff contains a melodic line in G major, 3/4 time, with a key signature of one flat. The melody begins with a quarter rest, followed by a dotted quarter note G4, an eighth note A4, and a quarter note B4. It continues with a half note C5, a quarter note D5, and a quarter note E5. The piece concludes with a quarter note D5, a quarter note C5, and a quarter note B4.

BK=2

Musical staff for BK=2, starting with a quarter rest, followed by a dotted quarter note G4, an eighth note A4, and a quarter note B4. It continues with a half note C5, a quarter note D5, and a quarter note E5. The piece concludes with a quarter note D5, a quarter note C5, and a quarter note B4.

BK=3

Musical staff for BK=3, starting with a quarter rest, followed by a dotted quarter note G4, an eighth note A4, and a quarter note B4. It continues with a half note C5, a quarter note D5, and a quarter note E5. The piece concludes with a quarter note D5, a quarter note C5, and a quarter note B4.

BK=4

Musical staff for BK=4, starting with a quarter rest, followed by a dotted quarter note G4, an eighth note A4, and a quarter note B4. It continues with a half note C5, a quarter note D5, and a quarter note E5. The piece concludes with a quarter note D5, a quarter note C5, and a quarter note B4.

BK=5

Musical staff for BK=5, starting with a quarter rest, followed by a dotted quarter note G4, an eighth note A4, and a quarter note B4. It continues with a half note C5, a quarter note D5, and a quarter note E5. The piece concludes with a quarter note D5, a quarter note C5, and a quarter note B4.

BK=6

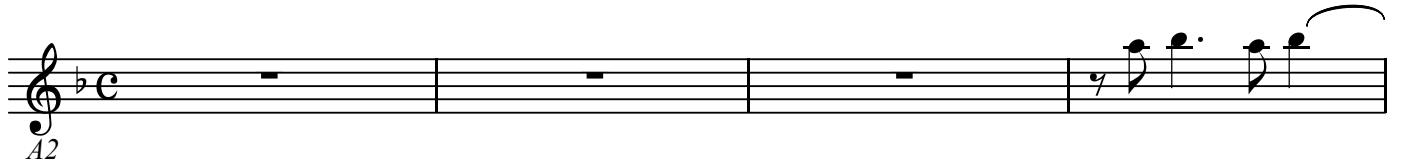
Musical staff for BK=6, starting with a quarter rest, followed by a dotted quarter note G4, an eighth note A4, and a quarter note B4. It continues with a half note C5, a quarter note D5, and a quarter note E5. The piece concludes with a quarter note D5, a quarter note C5, and a quarter note B4.

A2

四声のカノン「わが太陽はかくれ」 KV557

W.A.Mozart

BK=1



BK=2



BK=3



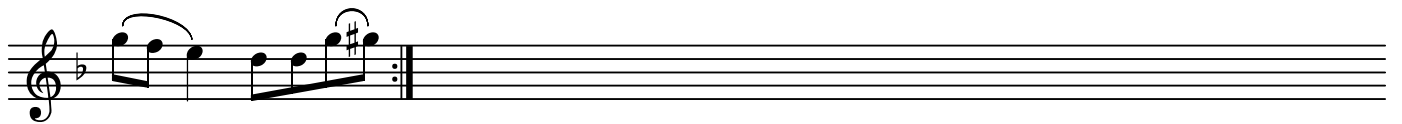
BK=4



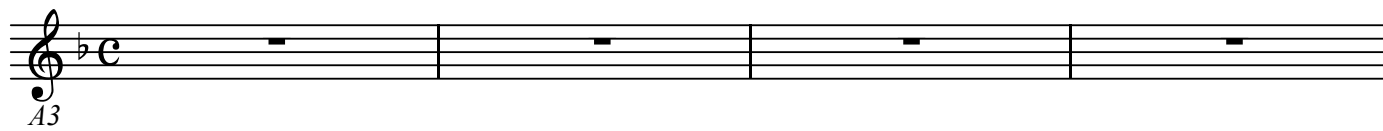
BK=5



BK=6

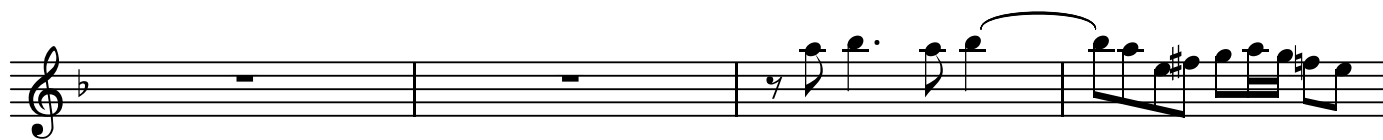


BK=1



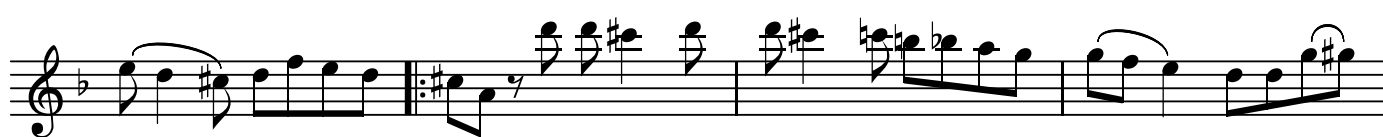
Musical staff for BK=1, showing a treble clef, a key signature of one flat (B-flat), and a common time signature (C). The staff contains four measures of whole rests.

BK=2



Musical staff for BK=2, showing a treble clef, a key signature of one flat (B-flat), and a common time signature (C). The staff contains four measures of music, starting with a whole rest, followed by eighth and sixteenth notes with a slur.

BK=3



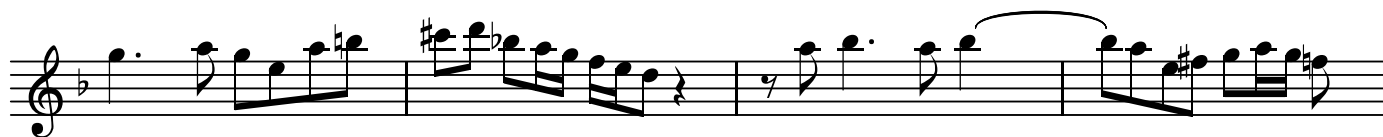
Musical staff for BK=3, showing a treble clef, a key signature of one flat (B-flat), and a common time signature (C). The staff contains four measures of music, including eighth and sixteenth notes with slurs and a repeat sign.

BK=4



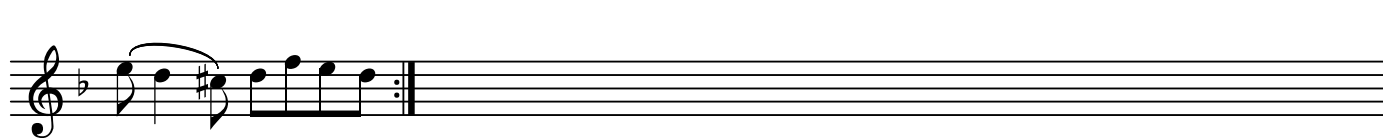
Musical staff for BK=4, showing a treble clef, a key signature of one flat (B-flat), and a common time signature (C). The staff contains four measures of music, including eighth and sixteenth notes with slurs.

BK=5



Musical staff for BK=5, showing a treble clef, a key signature of one flat (B-flat), and a common time signature (C). The staff contains four measures of music, including eighth and sixteenth notes with slurs and a repeat sign.

BK=6



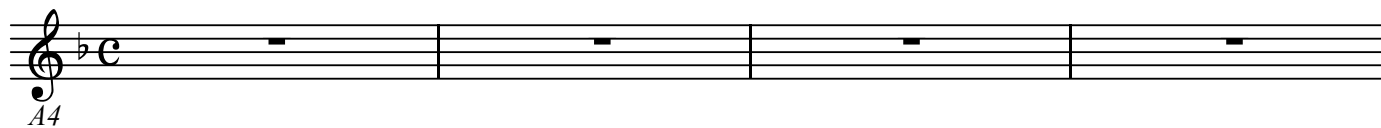
Musical staff for BK=6, showing a treble clef, a key signature of one flat (B-flat), and a common time signature (C). The staff contains four measures of music, including eighth and sixteenth notes with slurs and a repeat sign.

A4

四声のカノン「わが太陽はかくれ」 KV557

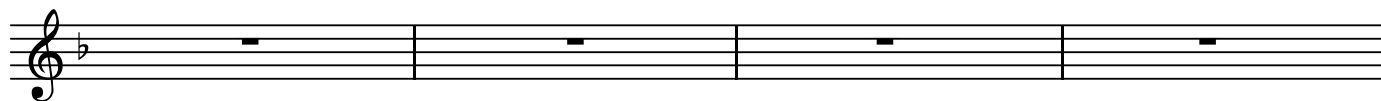
W.A.Mozart

BK=1



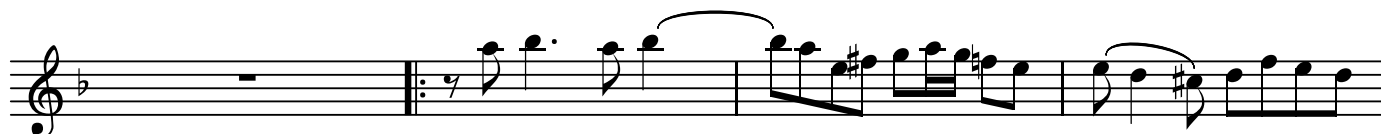
Musical staff for BK=1, showing a treble clef, a key signature of one flat (B-flat), and a common time signature (C). The staff contains four measures of whole rests.

BK=2



Musical staff for BK=2, showing a treble clef, a key signature of one flat (B-flat), and a common time signature (C). The staff contains four measures of whole rests.

BK=3



Musical staff for BK=3, showing a treble clef, a key signature of one flat (B-flat), and a common time signature (C). The staff contains four measures of music, starting with a repeat sign and a fermata over the first measure.

BK=4



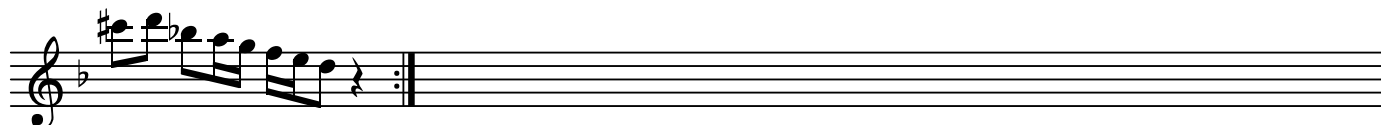
Musical staff for BK=4, showing a treble clef, a key signature of one flat (B-flat), and a common time signature (C). The staff contains four measures of music.

BK=5



Musical staff for BK=5, showing a treble clef, a key signature of one flat (B-flat), and a common time signature (C). The staff contains four measures of music.

BK=6



Musical staff for BK=6, showing a treble clef, a key signature of one flat (B-flat), and a common time signature (C). The staff contains four measures of music, ending with a repeat sign and a fermata.