





BK=1



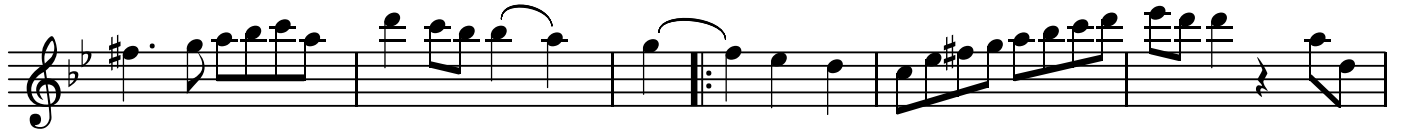
Musical staff for BK=1, showing a treble clef, a key signature of one flat (B-flat), and a common time signature (C). The staff contains five measures of whole rests.

BK=2



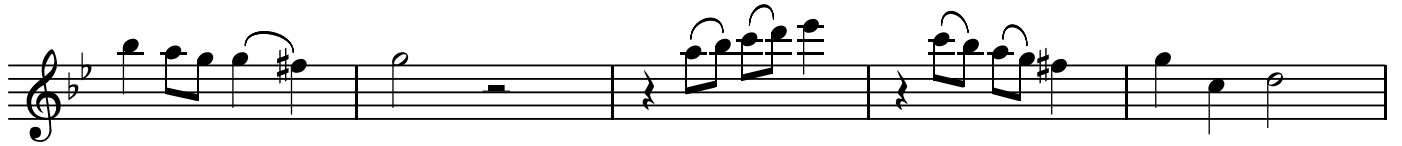
Musical staff for BK=2, showing a treble clef, a key signature of one flat (B-flat), and a common time signature (C). The staff contains five measures: the first three are whole rests, the fourth is a quarter rest, and the fifth is a sixteenth-note scale starting on G4.

BK=3



Musical staff for BK=3, showing a treble clef, a key signature of one flat (B-flat), and a common time signature (C). The staff contains five measures of eighth-note patterns with various accidentals and phrasing.

BK=4



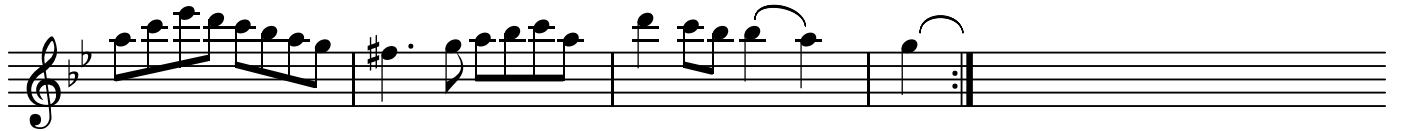
Musical staff for BK=4, showing a treble clef, a key signature of one flat (B-flat), and a common time signature (C). The staff contains five measures of eighth-note patterns with various accidentals and phrasing.

BK=5



Musical staff for BK=5, showing a treble clef, a key signature of one flat (B-flat), and a common time signature (C). The staff contains five measures of eighth-note patterns with various accidentals and phrasing.

BK=6



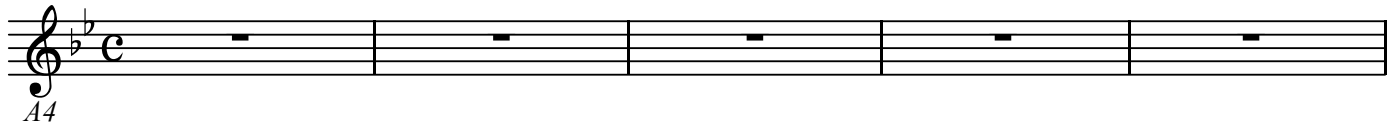
Musical staff for BK=6, showing a treble clef, a key signature of one flat (B-flat), and a common time signature (C). The staff contains five measures of eighth-note patterns with various accidentals and phrasing.

A4

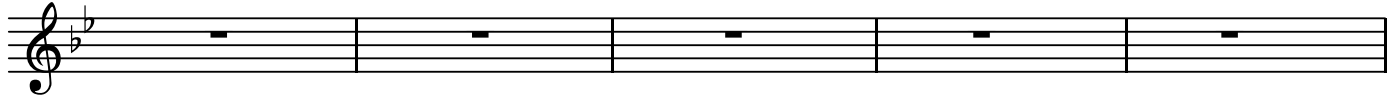
四声のカノン「私は悲しい」 KV555

W.A.Mozart

BK=1



BK=2



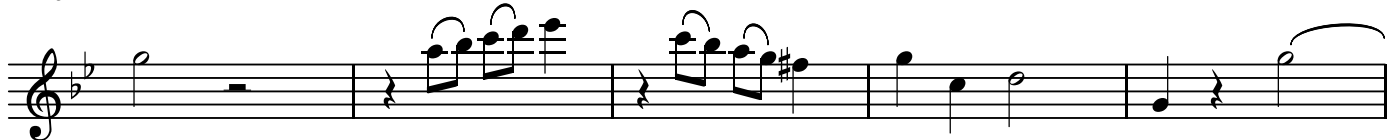
BK=3



BK=4



BK=5



BK=6

