

A1

四声のカノン「アヴェ・マリア」 KV554

W.A.Mozart

BK=1

Musical staff for BK=1, starting with a treble clef and a common time signature (C). The melody begins with a quarter rest, followed by a quarter note G4, a quarter note A4, and a quarter note B4. A slur covers the next four notes: G4, A4, B4, and C5. The staff continues with a quarter note B4, a quarter note A4, and a quarter note G4. A slur covers the next four notes: G4, A4, B4, and C5. The staff concludes with a quarter note B4, a quarter note A4, and a quarter note G4.

BK=2

Musical staff for BK=2, starting with a treble clef and a common time signature (C). The melody begins with a quarter rest, followed by a quarter note G4, a quarter note A4, and a quarter note B4. A slur covers the next four notes: G4, A4, B4, and C5. The staff continues with a quarter note B4, a quarter note A4, and a quarter note G4. A slur covers the next four notes: G4, A4, B4, and C5. The staff concludes with a quarter note B4, a quarter note A4, and a quarter note G4.

BK=3

Musical staff for BK=3, starting with a treble clef and a common time signature (C). The melody begins with a quarter rest, followed by a quarter note G4, a quarter note A4, and a quarter note B4. A slur covers the next four notes: G4, A4, B4, and C5. The staff continues with a quarter note B4, a quarter note A4, and a quarter note G4. A slur covers the next four notes: G4, A4, B4, and C5. The staff concludes with a quarter note B4, a quarter note A4, and a quarter note G4.

BK=4

Musical staff for BK=4, starting with a treble clef and a common time signature (C). The melody begins with a quarter rest, followed by a quarter note G4, a quarter note A4, and a quarter note B4. A slur covers the next four notes: G4, A4, B4, and C5. The staff continues with a quarter note B4, a quarter note A4, and a quarter note G4. A slur covers the next four notes: G4, A4, B4, and C5. The staff concludes with a quarter note B4, a quarter note A4, and a quarter note G4.

BK=5

Musical staff for BK=5, starting with a treble clef and a common time signature (C). The melody begins with a quarter rest, followed by a quarter note G4, a quarter note A4, and a quarter note B4. A slur covers the next four notes: G4, A4, B4, and C5. The staff continues with a quarter note B4, a quarter note A4, and a quarter note G4. A slur covers the next four notes: G4, A4, B4, and C5. The staff concludes with a quarter note B4, a quarter note A4, and a quarter note G4.

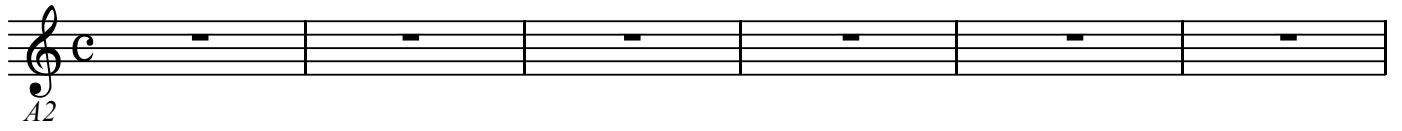
BK=6

Musical staff for BK=6, starting with a treble clef and a common time signature (C). The melody begins with a quarter rest, followed by a quarter note G4, a quarter note A4, and a quarter note B4. A slur covers the next four notes: G4, A4, B4, and C5. The staff continues with a quarter note B4, a quarter note A4, and a quarter note G4. A slur covers the next four notes: G4, A4, B4, and C5. The staff concludes with a quarter note B4, a quarter note A4, and a quarter note G4.

BK=7

Musical staff for BK=7, starting with a treble clef and a common time signature (C). The melody begins with a quarter rest, followed by a quarter note G4, a quarter note A4, and a quarter note B4. A slur covers the next four notes: G4, A4, B4, and C5. The staff continues with a quarter note B4, a quarter note A4, and a quarter note G4. A slur covers the next four notes: G4, A4, B4, and C5. The staff concludes with a quarter note B4, a quarter note A4, and a quarter note G4.

BK=1



BK=2



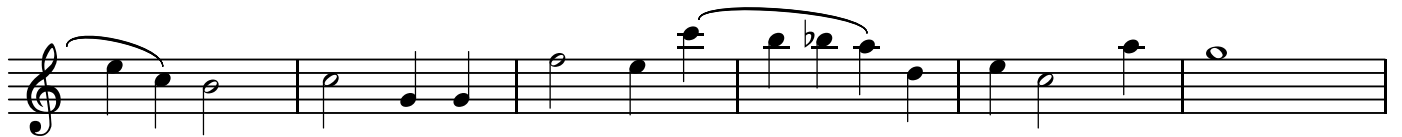
BK=3



BK=4



BK=5



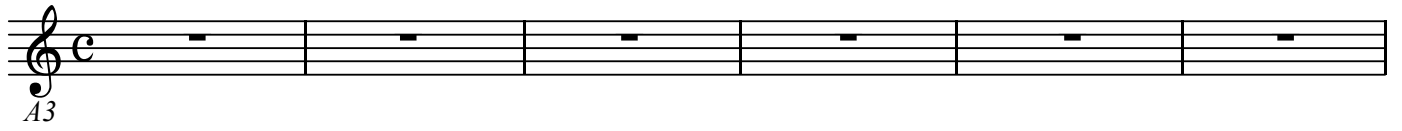
BK=6



BK=7



BK=1



BK=2



BK=3



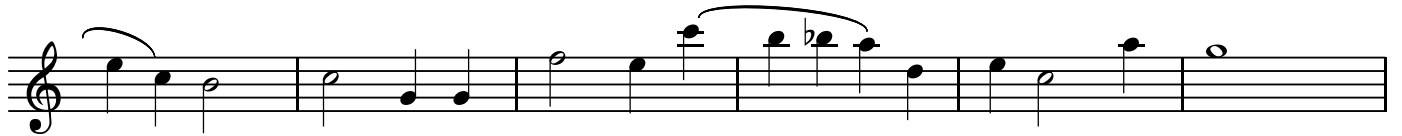
BK=4



BK=5



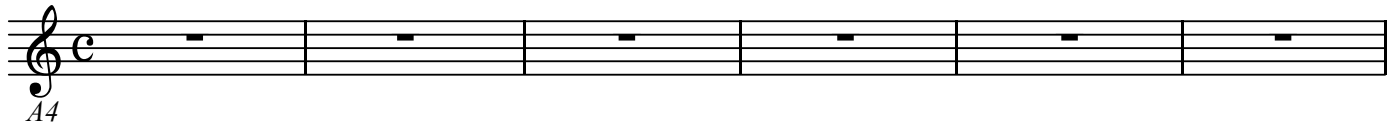
BK=6



BK=7



BK=1



BK=2



BK=3



BK=4



BK=5



BK=6



BK=7

