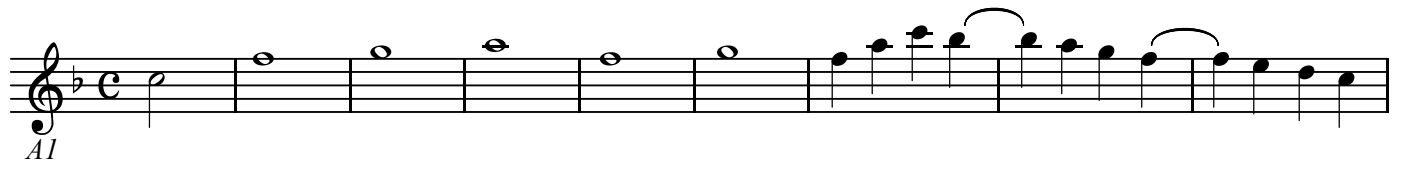


A1

四声のカノン「アレルヤ」 KV553

W.A.Mozart

BK=1



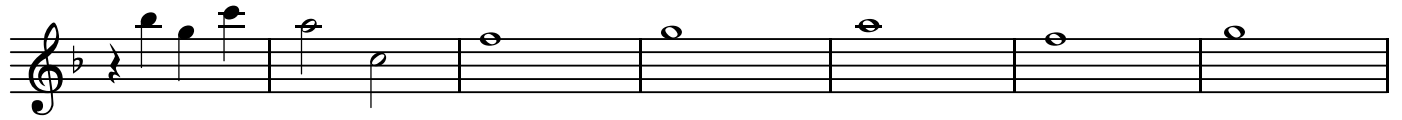
BK=2



BK=3



BK=4



BK=5



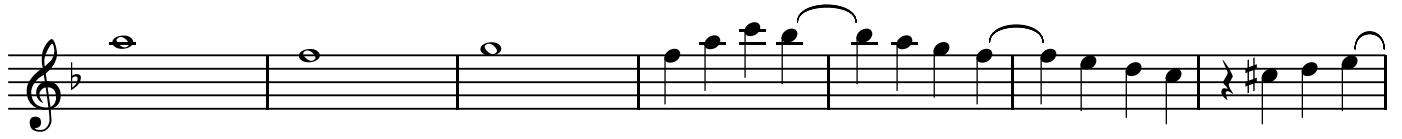
BK=6



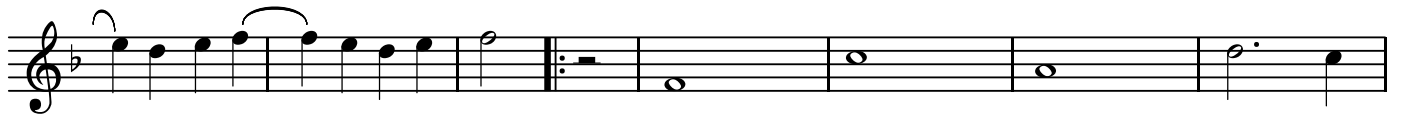
BK=1



BK=2



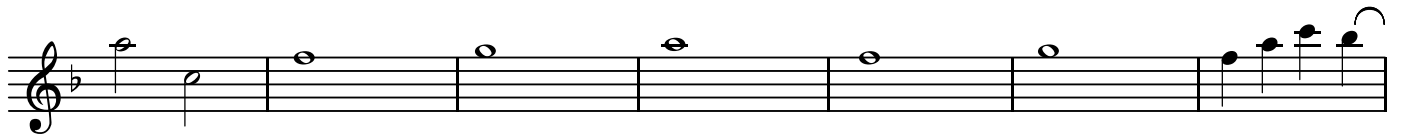
BK=3



BK=4



BK=5



BK=6



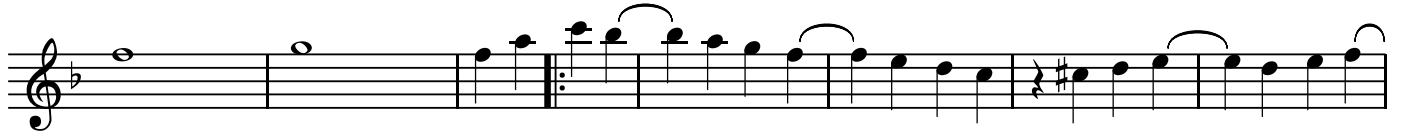
BK=1



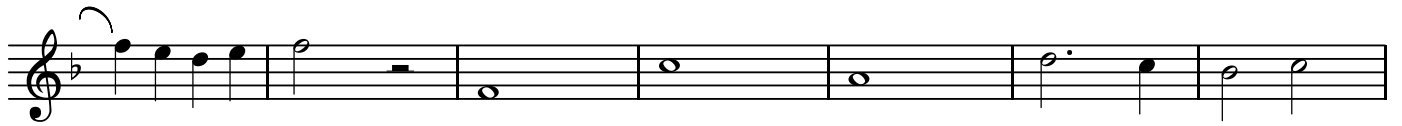
BK=2



BK=3



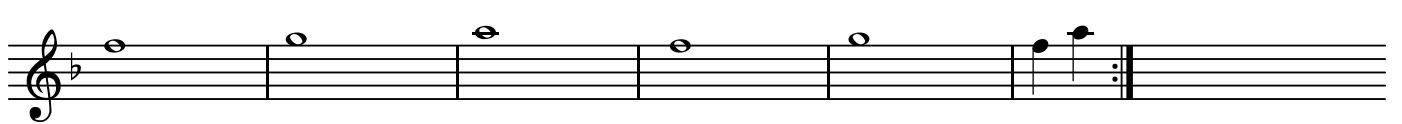
BK=4



BK=5



BK=6



A4

四声のカノン「アレルヤ」 KV553

W.A.Mozart

BK=1



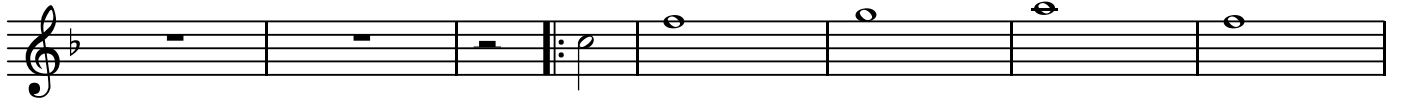
Musical staff for BK=1, showing a treble clef, a key signature of one flat (B-flat), and a common time signature (C). The staff contains a series of rests, indicating a whole rest for the duration of the measure.

BK=2



Musical staff for BK=2, showing a treble clef, a key signature of one flat (B-flat), and a common time signature (C). The staff contains a series of rests, indicating a whole rest for the duration of the measure.

BK=3




Musical staff for BK=3, showing a treble clef, a key signature of one flat (B-flat), and a common time signature (C). The staff contains a series of rests, followed by a repeat sign and a series of quarter notes.

BK=4



Musical staff for BK=4, showing a treble clef, a key signature of one flat (B-flat), and a common time signature (C). The staff contains a series of quarter notes, some with slurs, and a sharp sign (F#) indicating a key change.

BK=5



Musical staff for BK=5, showing a treble clef, a key signature of one flat (B-flat), and a common time signature (C). The staff contains a series of quarter notes and eighth notes.

BK=6



Musical staff for BK=6, showing a treble clef, a key signature of one flat (B-flat), and a common time signature (C). The staff contains a series of quarter notes, eighth notes, and a sharp sign (F#) indicating a key change, ending with a double bar line and repeat sign.