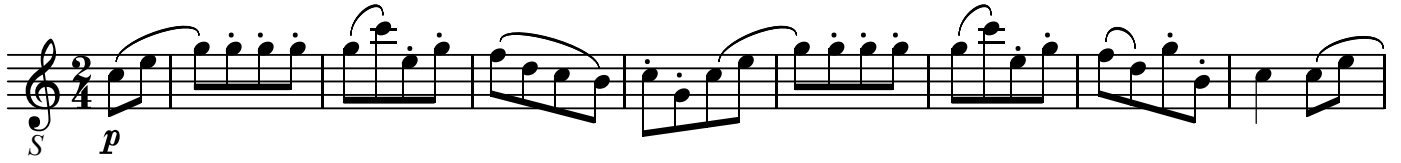


コントルダンス KV535
La Bataille (進軍)

W.A.Mozart

BK=1



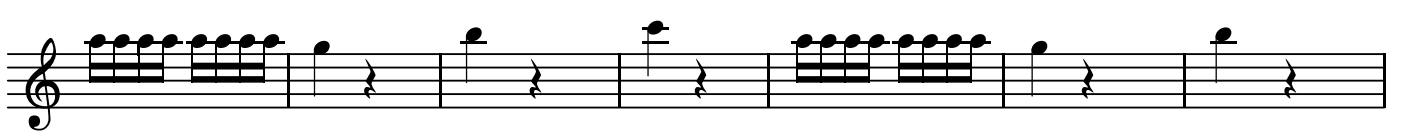
BK=2



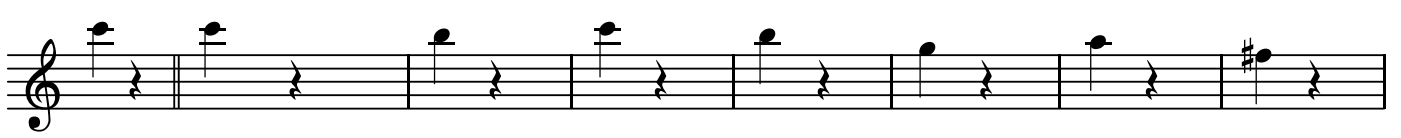
BK=3



BK=4



BK=5



BK=6



BK=7



BK=8



BK=9



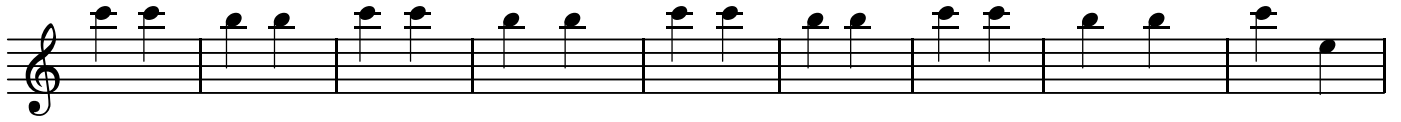
BK=10



BK=11



BK=10



BK=11



BK=10



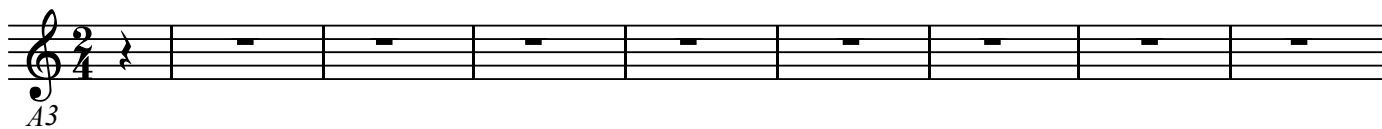
BK=11



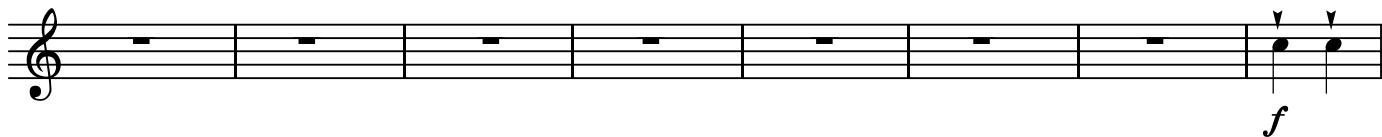
コントルダンス KV535
La Bataille (進軍)

W.A.Mozart

BK=1



BK=2



BK=3



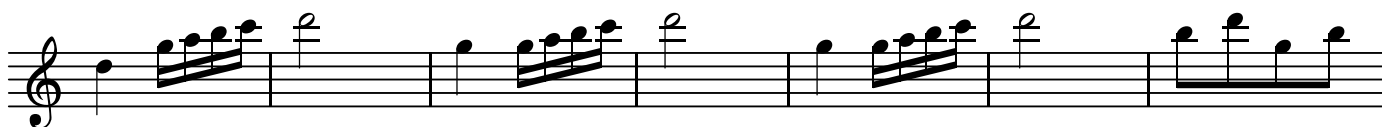
BK=4



BK=5



BK=6



BK=7



BK=8



BK=9



BK=10



BK=11



BK=10



BK=11



B

コントルダンス KV535
La Bataille (進軍)

W.A.Mozart

BK=1



Musical notation for BK=1, bass clef, 2/4 time signature. The first measure is marked with a *B* (B-flat) and the second measure with a *p* (piano) dynamic. The notation includes eighth and sixteenth notes with beams, and quarter notes.

BK=2



Musical notation for BK=2, bass clef, 2/4 time signature. The notation includes eighth and sixteenth notes with beams, and quarter notes.

BK=3



Musical notation for BK=3, bass clef, 2/4 time signature. The notation includes eighth notes with beams and quarter notes. A *f* (forte) dynamic marking is present at the beginning.

BK=4




Musical notation for BK=4, bass clef, 2/4 time signature. The notation includes eighth notes with beams and quarter notes.

BK=5



Musical notation for BK=5, bass clef, 2/4 time signature. The notation includes eighth notes with beams and quarter notes. There are sharp signs (#) above some notes, indicating a key signature change.

BK=6



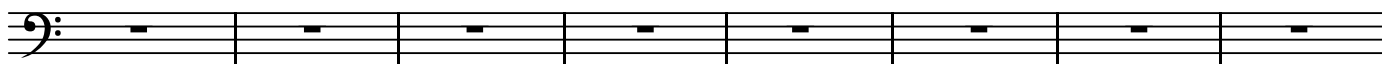
Musical notation for BK=6, bass clef, 2/4 time signature. The notation includes eighth notes with beams and quarter notes.

BK=7



Musical notation for BK=7, bass clef, 2/4 time signature. The notation includes quarter notes and rests.

BK=8



Musical notation for BK=8, bass clef, 2/4 time signature. The notation consists of a series of rests.

BK=9



Musical notation for BK=9, bass clef, 2/4 time signature. The notation includes quarter notes and rests. A *f* (forte) dynamic marking is present at the beginning.

BK=10



BK=11

