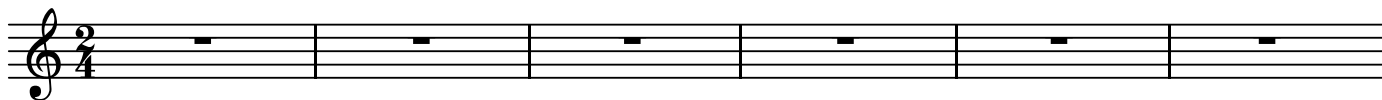


S1

ドン・ジョヴァンニ
第7番 お手をどうぞ

BK=1
Andante



S1

BK=2



BK=3



BK=4



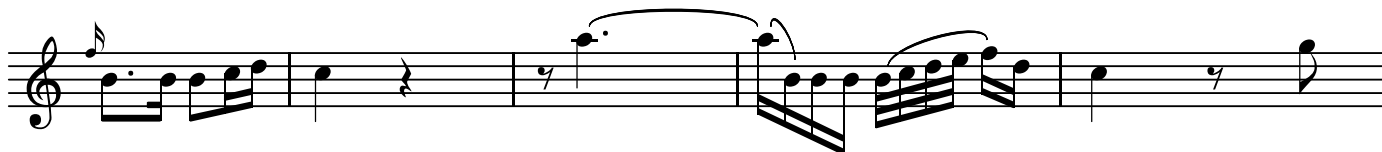
BK=5



BK=6



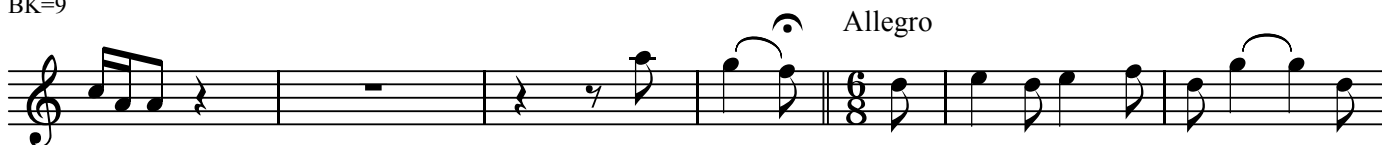
BK=7



BK=8

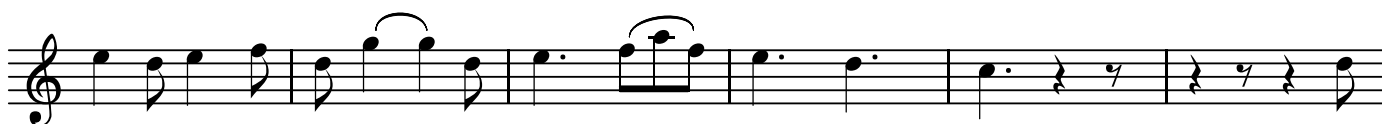


BK=9



Allegro

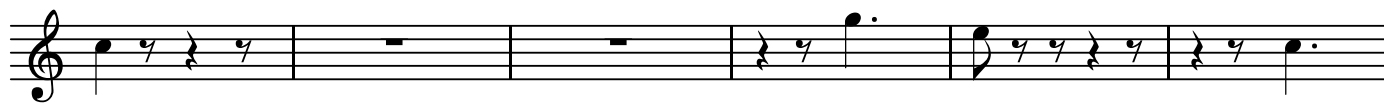
BK=10



BK=11



BK=12



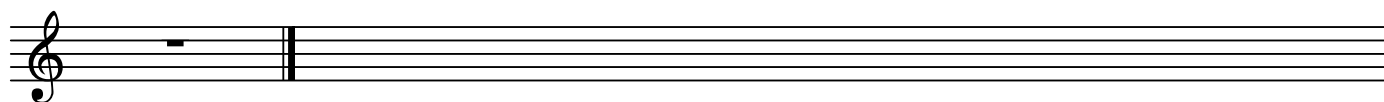
BK=13



BK=14



BK=15



S2

ドン・ジョヴァンニ
第7番 お手をどうぞ

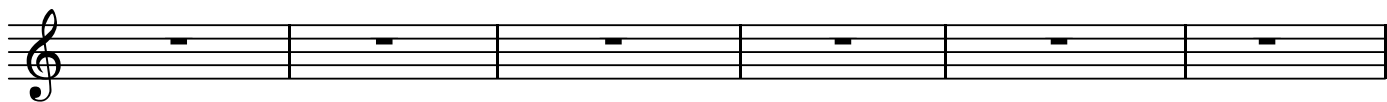
BK=1



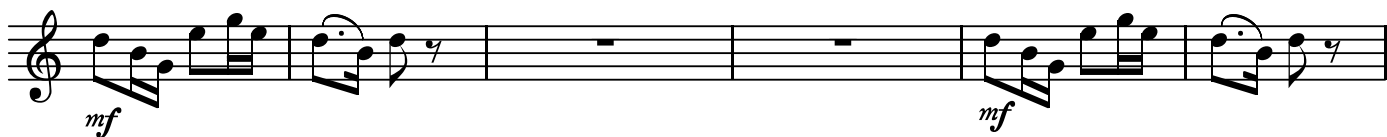
S2
BK=2



BK=3



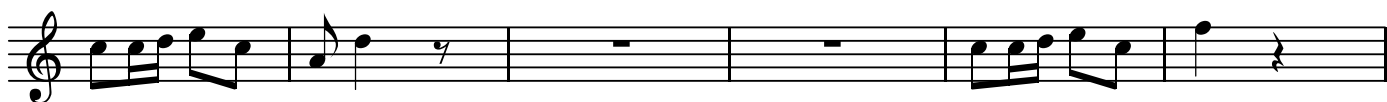
BK=4



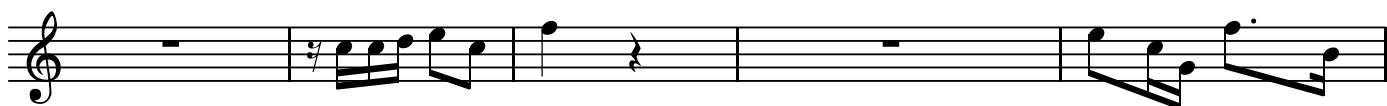
BK=5



BK=6



BK=7



BK=8



BK=9



BK=10



BK=11



BK=12



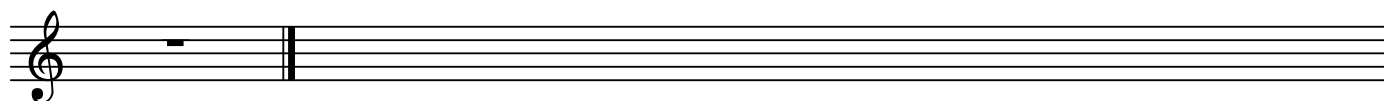
BK=13



BK=14



BK=15



A

ドン・ジョヴァンニ
第7番 お手をどうぞ

BK=1



Musical notation for BK=1, starting with a treble clef and a 2/4 time signature. The first measure has a dynamic marking of *p*. The notation includes eighth notes, quarter notes, and a half note with a slur. A second dynamic marking of *p* appears in the fifth measure.

BK=2



Musical notation for BK=2, continuing the melody with eighth and quarter notes, and a half note with a slur.

BK=3



Musical notation for BK=3, featuring eighth notes and quarter notes.

BK=4



Musical notation for BK=4, including a dynamic marking of *mf*, a half note, a quarter note, and a sixteenth-note triplet. A second dynamic marking of *mf* is present at the end of the line.

BK=5



Musical notation for BK=5, starting with a dynamic marking of *p* and ending with a dynamic marking of *sfp* over a triplet of sixteenth notes.

BK=6



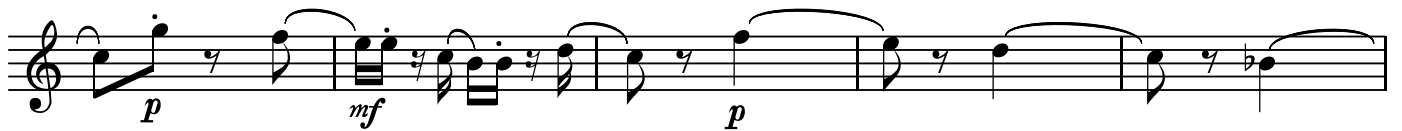
Musical notation for BK=6, featuring a dynamic marking of *p* and another *p* marking in the fifth measure.

BK=7



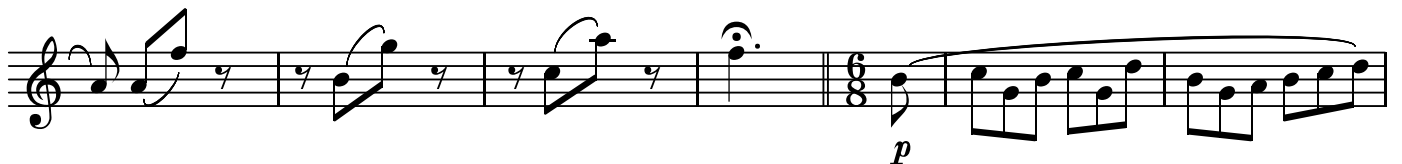
Musical notation for BK=7, including a dynamic marking of *mf* at the end of the line.

BK=8



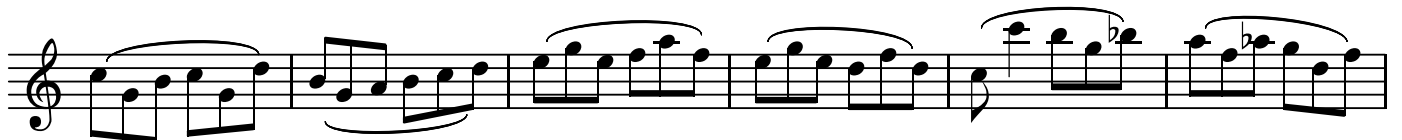
Musical notation for BK=8, with dynamic markings of *p*, *mf*, and *p*.

BK=9



Musical notation for BK=9, showing a change in time signature from 2/4 to 6/8 and a dynamic marking of *p*.

BK=10



Musical notation for BK=10, featuring eighth notes and quarter notes.

BK=11



BK=12



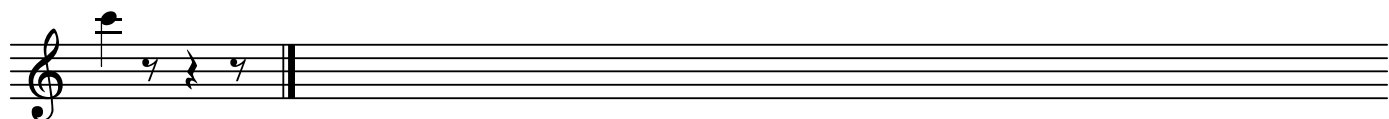
BK=13



BK=14



BK=15



T

ドン・ジョヴァンニ
第7番 お手をどうぞ

BK=1



Musical notation for BK=1, starting with a treble clef and a 2/4 time signature. The piece begins with a piano (*p*) dynamic. The notation includes eighth and sixteenth notes, rests, and a sharp sign on the second line.

BK=2



Musical notation for BK=2, continuing the piece with eighth and sixteenth notes and rests.

BK=3



Musical notation for BK=3, featuring eighth and sixteenth notes and rests.

BK=4



Musical notation for BK=4, including a mezzo-forte (*mf*) dynamic, a piano (*p*) dynamic, and a mezzo-forte (*mf*) dynamic. It features eighth and sixteenth notes and rests.

BK=5



Musical notation for BK=5, starting with a piano (*p*) dynamic and ending with a sforzando (*sfp*) dynamic. It includes a triplet of eighth notes.

BK=6



Musical notation for BK=6, featuring a piano (*p*) dynamic and ending with a piano (*p*) dynamic. It includes eighth and sixteenth notes and rests.

BK=7



Musical notation for BK=7, including a mezzo-forte (*mf*) dynamic. It features eighth and sixteenth notes and rests.

BK=8



Musical notation for BK=8, featuring a piano (*p*) dynamic and ending with a piano (*p*) dynamic. It includes eighth and sixteenth notes and rests.

BK=9



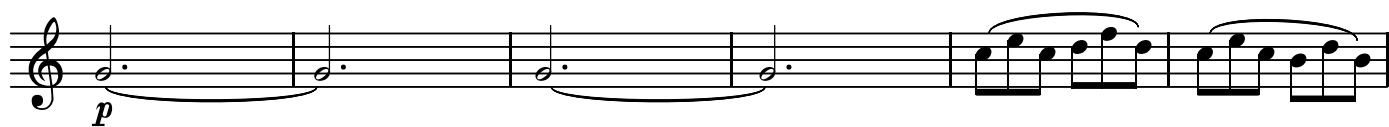
Musical notation for BK=9, including a piano (*p*) dynamic. It features eighth and sixteenth notes and rests.

BK=10



Musical notation for BK=10, featuring eighth and sixteenth notes and rests.

BK=11



BK=12



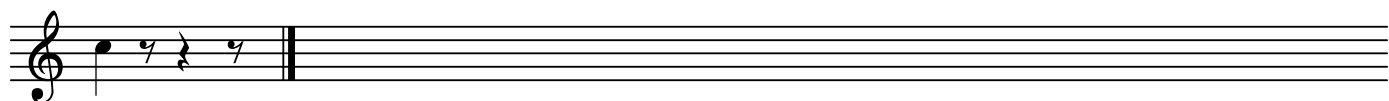
BK=13



BK=14



BK=15



B

ドン・ジョヴァンニ
第7番 お手をどうぞ

BK=1

Musical notation for BK=1, bass clef, 2/4 time signature. The piece begins with a piano (*p*) dynamic. The first measure is marked with a 'B' and contains a whole note G2. The melody consists of eighth notes and quarter notes, with a phrase of four eighth notes (F2, G2, A2, B2) marked with a piano (*p*) dynamic.

BK=2

Musical notation for BK=2, bass clef, 2/4 time signature. The melody continues with eighth notes and quarter notes, including a phrase of four eighth notes (A2, B2, C3, B2) marked with a piano (*p*) dynamic.

BK=3

Musical notation for BK=3, bass clef, 2/4 time signature. The melody continues with eighth notes and quarter notes, ending with a half note G2.

BK=4

Musical notation for BK=4, bass clef, 2/4 time signature. The melody continues with eighth notes and quarter notes, featuring a phrase of four eighth notes (F2, G2, A2, B2) marked with a piano (*p*) dynamic. The piece starts with a mezzo-forte (*mf*) dynamic.

BK=5

Musical notation for BK=5, bass clef, 2/4 time signature. The melody continues with eighth notes and quarter notes, featuring a phrase of four eighth notes (A2, B2, C3, B2) marked with a piano (*p*) dynamic. The piece starts with a piano (*p*) dynamic and ends with a sforzando (*sfp*) dynamic.

BK=6

Musical notation for BK=6, bass clef, 2/4 time signature. The melody continues with eighth notes and quarter notes, featuring a phrase of four eighth notes (F2, G2, A2, B2) marked with a piano (*p*) dynamic. The piece starts with a piano (*p*) dynamic and ends with a piano (*p*) dynamic.

BK=7

Musical notation for BK=7, bass clef, 2/4 time signature. The melody continues with eighth notes and quarter notes, featuring a phrase of four eighth notes (A2, B2, C3, B2) marked with a mezzo-forte (*mf*) dynamic. The piece starts with a mezzo-forte (*mf*) dynamic and ends with a mezzo-forte (*mf*) dynamic.

BK=8

Musical notation for BK=8, bass clef, 2/4 time signature. The melody continues with eighth notes and quarter notes, featuring a phrase of four eighth notes (F2, G2, A2, B2) marked with a piano (*p*) dynamic. The piece starts with a piano (*p*) dynamic and ends with a piano (*p*) dynamic.

BK=9

Musical notation for BK=9, bass clef, 2/4 time signature. The melody continues with eighth notes and quarter notes, ending with a half note G2. The piece starts with a piano (*p*) dynamic and ends with a piano (*p*) dynamic.

BK=10

Musical notation for BK=10, bass clef, 2/4 time signature. The melody continues with eighth notes and quarter notes, ending with a half note G2. The piece starts with a piano (*p*) dynamic and ends with a piano (*p*) dynamic.

BK=11



BK=12



BK=13



BK=14



BK=15

