

ドン・ジョヴァンニ
第23番 わたしはあなたのもの

BK=1 Larghetto

Musical staff BK=1, starting with a treble clef, a key signature of one flat (B-flat), and a 2/4 time signature. The staff contains a whole rest followed by a series of eighth and sixteenth notes with slurs.

BK=2

Musical staff BK=2, continuing the melody with eighth and sixteenth notes. A dynamic marking of *mf* is placed below the staff.

BK=3

Musical staff BK=3, featuring a mix of eighth and sixteenth notes with slurs.

BK=4

Musical staff BK=4, containing more complex rhythmic patterns with slurs and ties.

BK=5

Musical staff BK=5, showing a transition with a whole rest and a few notes.

BK=6

Musical staff BK=6, continuing the melodic line with eighth notes and slurs.

BK=7

Musical staff BK=7, featuring a series of eighth notes with slurs. A dynamic marking of *cresc.* is placed at the end of the staff.

BK=8

Musical staff BK=8, starting with a dynamic marking of *f*, followed by a *p* marking, and then eighth notes with slurs.

BK=9

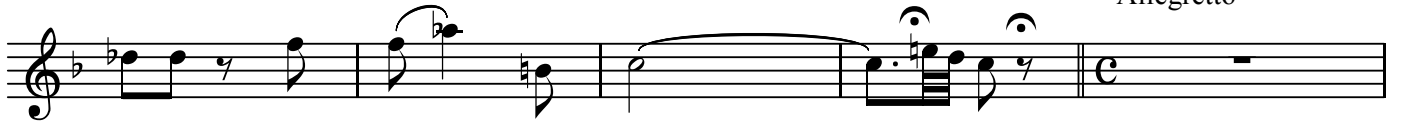
Musical staff BK=9, featuring dynamic markings of *mf*, *sf*, and *p* over eighth notes with slurs.

BK=10

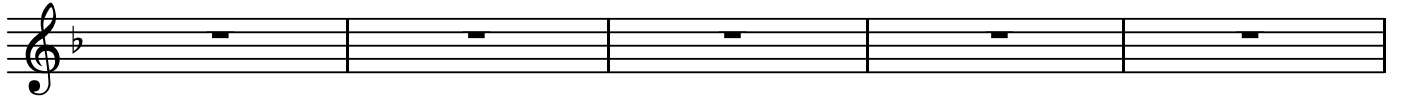
Musical staff BK=10, concluding the piece with eighth notes and slurs.

BK=11

Allegretto



BK=12



BK=13



BK=14



BK=15



BK=16



BK=17



BK=18



BK=19



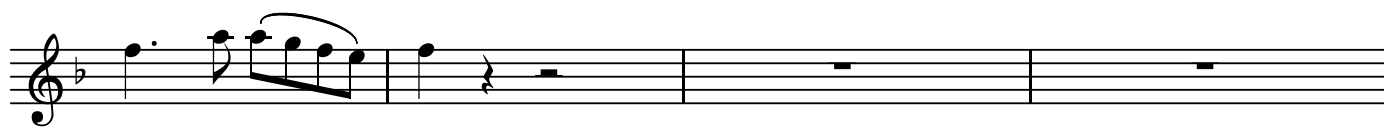
BK=20



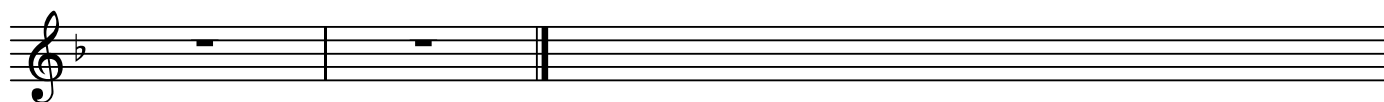
BK=21



BK=22



BK=23



A1

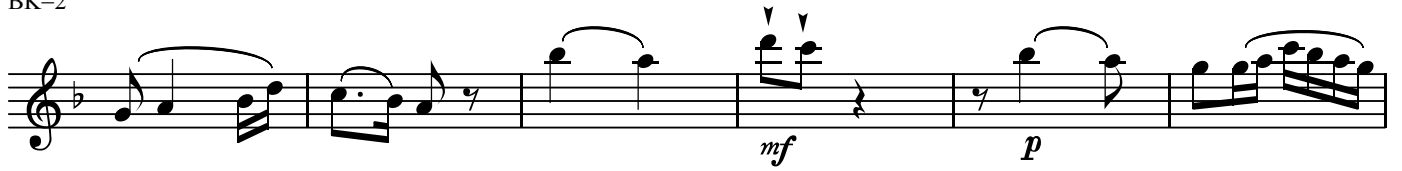
ドン・ジョヴァンニ
第23番 わたしはあなたのもの

BK=1



Musical staff for BK=1, starting with a treble clef, a key signature of one flat (B-flat), and a 2/4 time signature. The music begins with a piano (*p*) dynamic. The staff contains several measures of music, including sixteenth-note runs and quarter notes.

BK=2



Musical staff for BK=2, continuing from the previous staff. It features a mezzo-forte (*mf*) dynamic followed by a piano (*p*) dynamic. The music includes sixteenth-note patterns and quarter notes.

BK=3



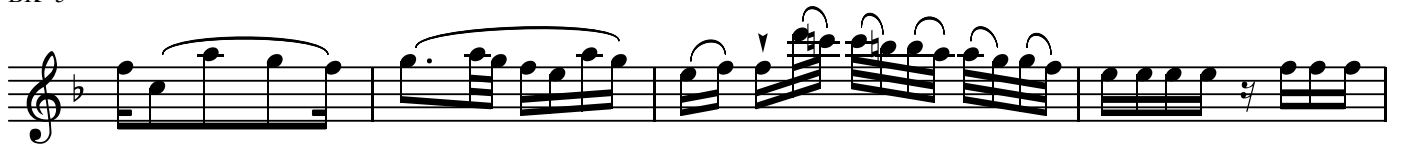
Musical staff for BK=3, featuring a series of sixteenth-note runs and quarter notes.

BK=4



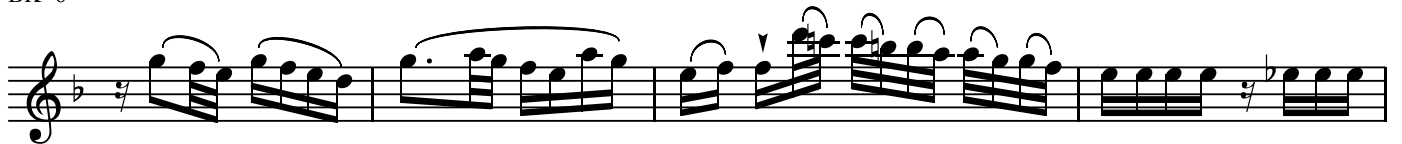
Musical staff for BK=4, featuring a series of sixteenth-note runs and quarter notes.

BK=5




Musical staff for BK=5, featuring a series of sixteenth-note runs and quarter notes.

BK=6



Musical staff for BK=6, featuring a series of sixteenth-note runs and quarter notes.

BK=7



Musical staff for BK=7, featuring a series of sixteenth-note runs and quarter notes, ending with a *cresc.* marking.

BK=8



Musical staff for BK=8, featuring a series of sixteenth-note runs and quarter notes, starting with a forte (*f*) dynamic and a piano (*p*) dynamic.

BK=9



Musical staff for BK=9, featuring a series of sixteenth-note runs and quarter notes, with dynamics of mezzo-forte (*mf*), sforzando (*sf*), and piano (*p*).

BK=10



Musical staff for BK=10, featuring a series of sixteenth-note runs and quarter notes.

BK=11

Musical notation for BK=11, featuring a treble clef, a key signature of one flat, and a common time signature. The piece begins with a forte (*f*) dynamic, followed by a piano (*p*) section, and concludes with another piano (*p*) section. The notation includes various note values, rests, and phrasing slurs.

BK=12

Musical notation for BK=12, featuring a treble clef, a key signature of one flat, and a common time signature. This section is characterized by frequent trills (*tr*) and slurs, with a dynamic of piano (*p*).

BK=13

Musical notation for BK=13, featuring a treble clef, a key signature of one flat, and a common time signature. This section includes trills (*tr*) and slurs, with a dynamic of piano (*p*).

BK=14

Musical notation for BK=14, featuring a treble clef, a key signature of one flat, and a common time signature. This section consists of slurred eighth and sixteenth notes, with a dynamic of piano (*p*).

BK=15

Musical notation for BK=15, featuring a treble clef, a key signature of one flat, and a common time signature. This section features a series of slurred eighth notes, with a dynamic of piano (*p*).

BK=16

Musical notation for BK=16, featuring a treble clef, a key signature of one flat, and a common time signature. This section includes a long slur over a half note and a subsequent eighth-note pattern, with a dynamic of piano (*p*).

BK=17

Musical notation for BK=17, featuring a treble clef, a key signature of one flat, and a common time signature. This section consists of a series of slurred half notes, with a dynamic of piano (*p*).

BK=18

Musical notation for BK=18, featuring a treble clef, a key signature of one flat, and a common time signature. This section features a series of slurred eighth notes, with a dynamic of piano (*p*).

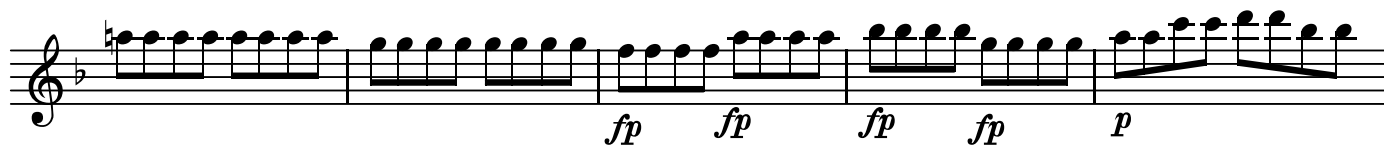
BK=19

Musical notation for BK=19, featuring a treble clef, a key signature of one flat, and a common time signature. This section includes a crescendo (*cresc.*) leading to a fortissimo (*sf*) section, followed by a piano (*p*) section. The notation includes slurs and accents.

BK=20

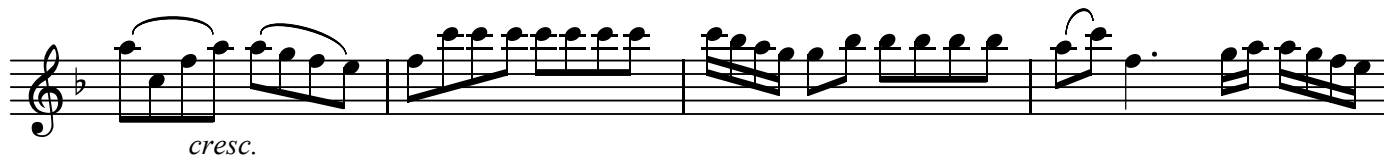
Musical notation for BK=20, featuring a treble clef, a key signature of one flat, and a common time signature. This section includes a fortissimo (*sf*) section, a piano (*p*) section, and a final fortissimo (*f*) piano (*p*) section. The notation includes slurs and accents.

BK=21



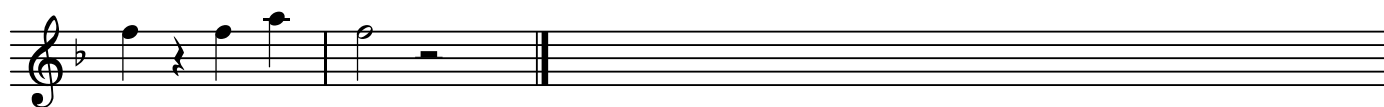
Musical notation for BK=21, featuring a treble clef, a key signature of one flat (B-flat), and a series of sixteenth-note runs. The notation includes dynamic markings: *fp*, *fp*, *fp*, *fp*, and *p*.

BK=22



Musical notation for BK=22, featuring a treble clef, a key signature of one flat (B-flat), and a series of sixteenth-note runs with slurs. The notation includes a dynamic marking: *cresc.*

BK=23



Musical notation for BK=23, featuring a treble clef, a key signature of one flat (B-flat), and a few notes followed by a double bar line.

A2

ドン・ジョヴァンニ
第23番 わたしはあなたのもの

BK=1

Musical staff BK=1, starting with a treble clef, a key signature of one flat (B-flat), and a 2/4 time signature. The music begins with a piano (*p*) dynamic. The staff contains a series of eighth and sixteenth notes, some beamed together, with slurs and accents.

BK=2

Musical staff BK=2, continuing the melody. It features a mezzo-forte (*mf*) dynamic followed by a piano (*p*) dynamic. The notation includes slurs, accents, and rests.

BK=3

Musical staff BK=3, featuring a complex rhythmic pattern with many beamed sixteenth notes and slurs.

BK=4

Musical staff BK=4, showing a melodic line with a sharp sign (#) on the second measure and a descending eighth-note sequence in the final measure.

BK=5

Musical staff BK=5, continuing the intricate rhythmic patterns with beamed sixteenth notes and slurs.

BK=6

Musical staff BK=6, featuring a complex rhythmic pattern with beamed sixteenth notes and slurs.

BK=7

Musical staff BK=7, showing a melodic line with a half note and a whole note, followed by a full bar rest.

BK=8

Musical staff BK=8, starting with a forte (*f*) dynamic, followed by a piano (*p*) dynamic. The staff contains a mix of eighth and sixteenth notes with slurs.

BK=9

Musical staff BK=9, featuring a mezzo-forte (*mf*) dynamic, a sforzando (*sf*) dynamic, and a piano (*p*) dynamic. The notation includes slurs and accents.

BK=10

Musical staff BK=10, continuing the complex rhythmic patterns with beamed sixteenth notes and slurs.

BK=11

Musical notation for BK=11, featuring a treble clef, a key signature of one flat, and a common time signature. The piece begins with a dynamic marking of *f* (forte) and includes a section marked *p* (piano) and another marked *fp* (fortissimo-piano). The notation includes various note values, rests, and a repeat sign.

BK=12

Musical notation for BK=12, featuring a treble clef, a key signature of one flat, and a common time signature. The notation includes various note values and rests.

BK=13

Musical notation for BK=13, featuring a treble clef, a key signature of one flat, and a common time signature. The notation includes various note values and rests.

BK=14

Musical notation for BK=14, featuring a treble clef, a key signature of one flat, and a common time signature. The notation includes various note values and rests.

BK=15

Musical notation for BK=15, featuring a treble clef, a key signature of one flat, and a common time signature. The notation includes various note values and rests.

BK=16

Musical notation for BK=16, featuring a treble clef, a key signature of one flat, and a common time signature. The notation includes various note values and rests.

BK=17

Musical notation for BK=17, featuring a treble clef, a key signature of one flat, and a common time signature. The notation includes various note values and rests.

BK=18

Musical notation for BK=18, featuring a treble clef, a key signature of one flat, and a common time signature. The notation includes various note values and rests.

BK=19

Musical notation for BK=19, featuring a treble clef, a key signature of one flat, and a common time signature. The notation includes various note values, rests, and dynamic markings such as *cresc.* (crescendo), *sf* (sforzando), and *p* (piano).

BK=20

Musical notation for BK=20, featuring a treble clef, a key signature of one flat, and a common time signature. The notation includes various note values, rests, and dynamic markings such as *sf* (sforzando), *p* (piano), and *fp* (fortissimo-piano).

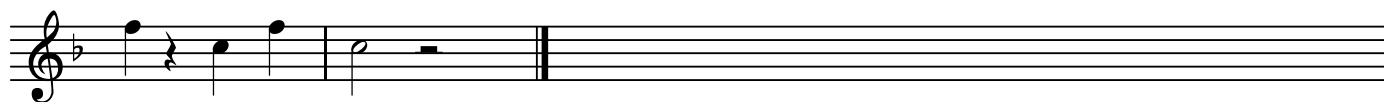
BK=21



BK=22



BK=23



T

ドン・ジョヴァンニ
第23番 わたしはあなたのもの

BK=1



Musical notation for BK=1, starting with a treble clef, a key signature of one flat (B-flat), and a 2/4 time signature. The music consists of six measures of eighth-note patterns, primarily beamed eighth notes. The first measure is marked with a *p* dynamic.

BK=2



Musical notation for BK=2, continuing the eighth-note patterns. It includes a *mf* dynamic marking and a *p* dynamic marking. The notation features some rests and a change in the rhythmic pattern towards the end of the section.

BK=3



Musical notation for BK=3, consisting of six measures of dense eighth-note passages, maintaining the beamed eighth-note texture.

BK=4



Musical notation for BK=4, featuring a more sparse melodic line with quarter notes and eighth notes, including a sharp sign (#) on the second measure.

BK=5



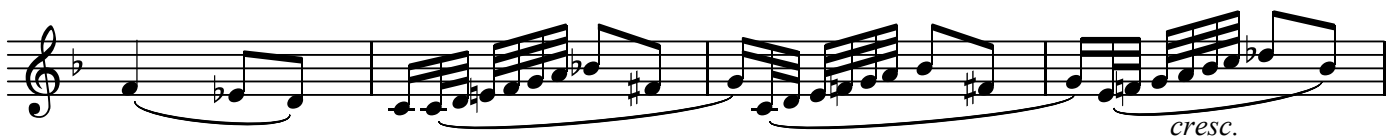
Musical notation for BK=5, showing a melodic line with eighth notes and quarter notes, including a fermata over the first measure.

BK=6



Musical notation for BK=6, continuing the melodic line with eighth notes and quarter notes.

BK=7



Musical notation for BK=7, featuring a melodic line with eighth notes and quarter notes, ending with a *cresc.* (crescendo) marking.

BK=8




Musical notation for BK=8, starting with a *f* dynamic, followed by a *p* dynamic, and then a series of eighth-note passages.

BK=9



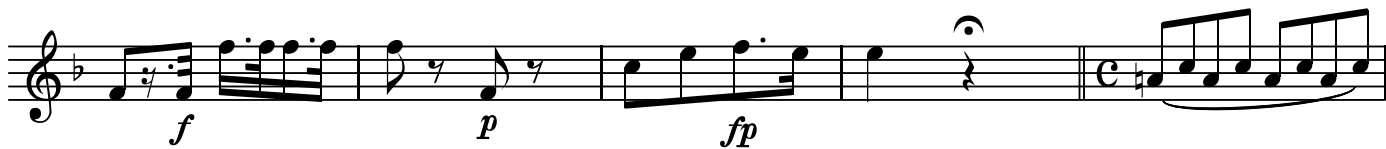
Musical notation for BK=9, featuring a melodic line with eighth notes and quarter notes, including *mf*, *sf*, and *p* dynamic markings.

BK=10



Musical notation for BK=10, consisting of six measures of dense eighth-note passages, similar to BK=3.

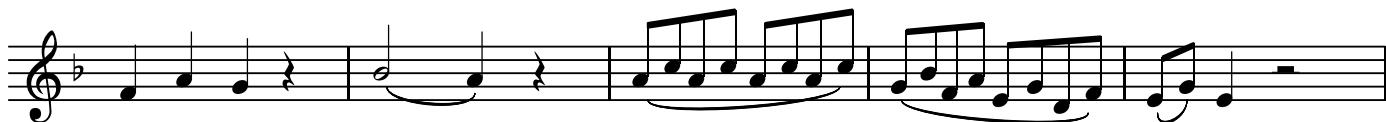
BK=11



BK=12



BK=13



BK=14



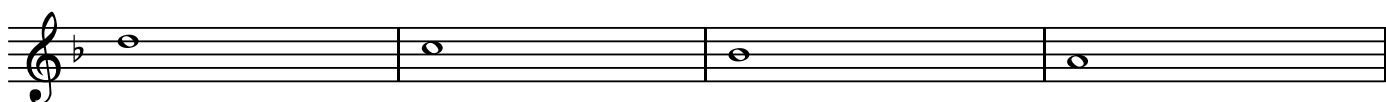
BK=15



BK=16



BK=17



BK=18



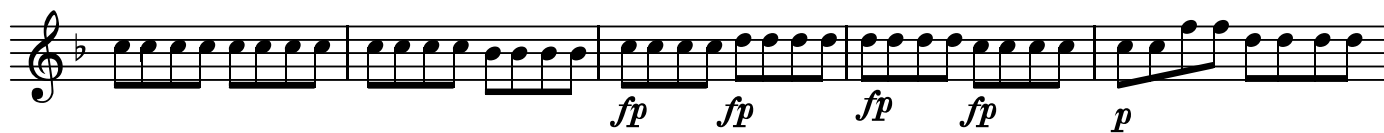
BK=19



BK=20



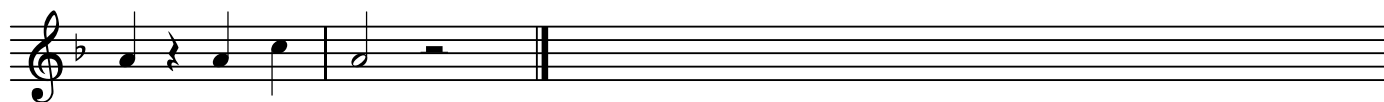
BK=21



BK=22



BK=23



B

ドン・ジョヴァンニ
第23番 わたしはあなたのもの

BK=1

Musical notation for BK=1, bass clef, 2/4 time signature. The staff contains a series of notes with a dynamic marking of *p* and a section labeled *B*.

BK=2

Musical notation for BK=2, bass clef. The staff contains a series of notes with dynamic markings of *mf* and *fp*.

BK=3

Musical notation for BK=3, bass clef. The staff contains a series of notes with a rhythmic pattern.

BK=4

Musical notation for BK=4, bass clef. The staff contains a series of notes with a dynamic marking of *mf* and a section labeled *B*.

BK=5

Musical notation for BK=5, bass clef. The staff contains a series of notes with a dynamic marking of *mf* and a section labeled *B*.

BK=6

Musical notation for BK=6, bass clef. The staff contains a series of notes with a dynamic marking of *mf* and a section labeled *B*.

BK=7

Musical notation for BK=7, bass clef. The staff contains a series of notes with a dynamic marking of *cresc.*

BK=8

Musical notation for BK=8, bass clef. The staff contains a series of notes with dynamic markings of *f* and *p*.

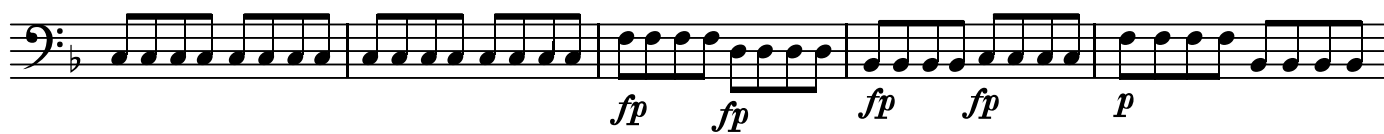
BK=9

Musical notation for BK=9, bass clef. The staff contains a series of notes with dynamic markings of *mf*, *sf*, and *p*.

BK=10

Musical notation for BK=10, bass clef. The staff contains a series of notes with a rhythmic pattern.

BK=21



BK=22



BK=23

