

S1

ドン・ジョヴァンニ
第2番 行って、無慈悲な人, 行って!

BK=1 Allegro assai

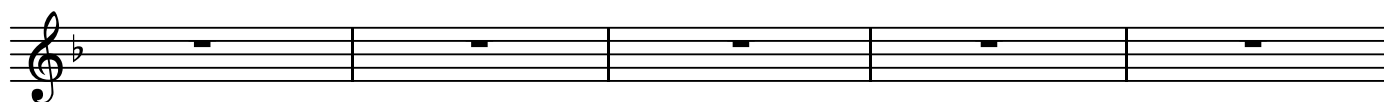


Sf

BK=2



BK=3



BK=4



BK=5

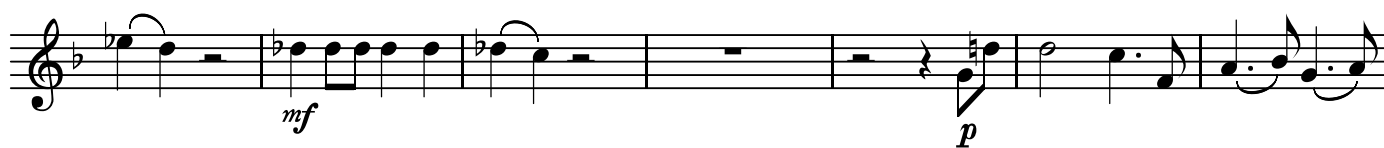


BK=6



sfp

BK=7



mf

p

BK=8



BK=9



sfp

mf

p

BK=10



BK=21



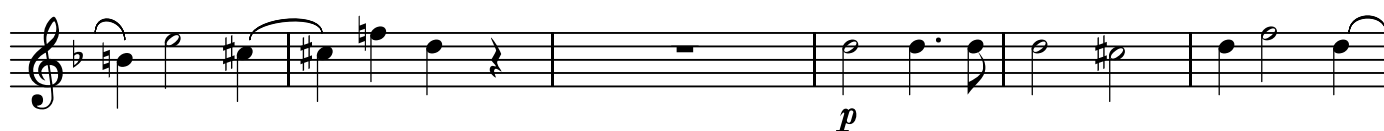
BK=22



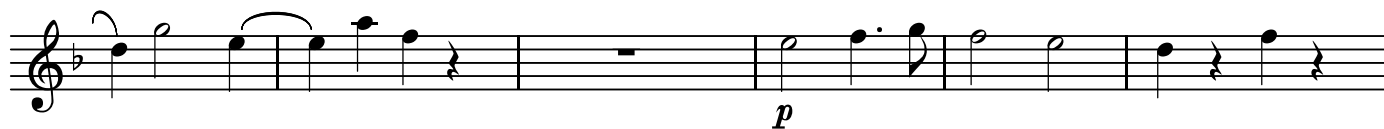
BK=23



BK=24



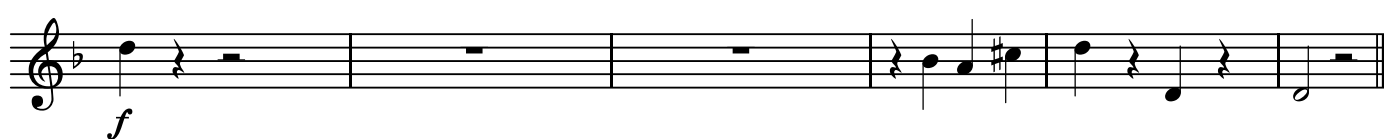
BK=25



BK=26



BK=27



S2

ドン・ジョヴァンニ
第2番 行って、無慈悲な人、行って！

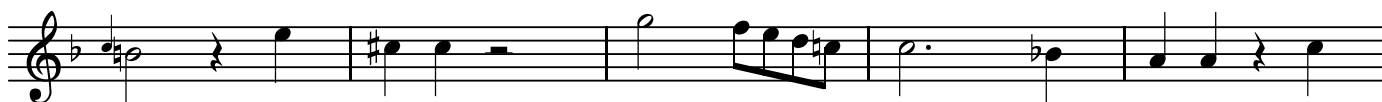
BK=1



S2
BK=2



BK=3



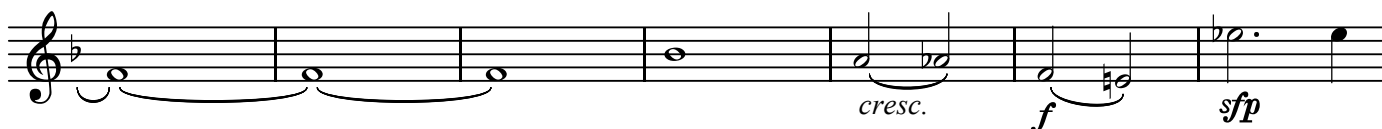
BK=4



BK=5



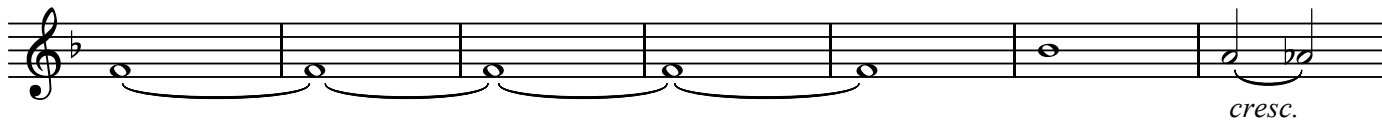
BK=6



BK=7



BK=8



BK=9



BK=10



BK=11



BK=12



BK=13



BK=14



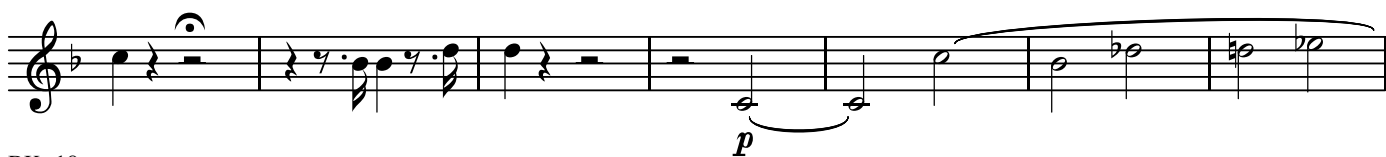
BK=15



BK=16



BK=17



BK=18



BK=19



BK=20



BK=21



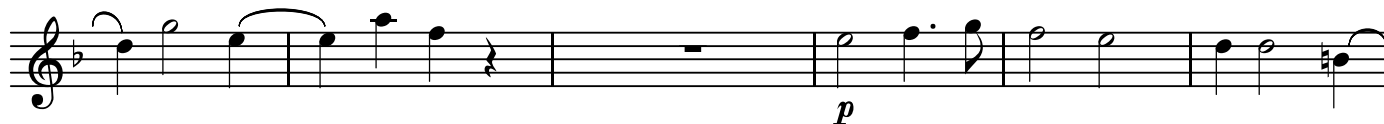
BK=22



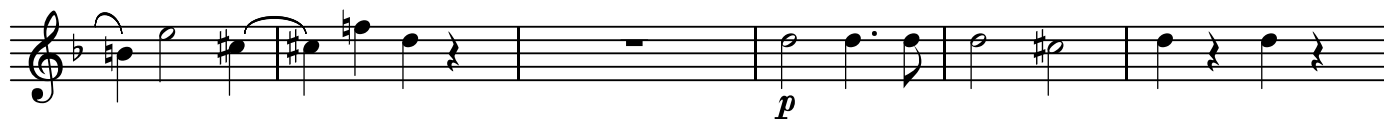
BK=23



BK=24



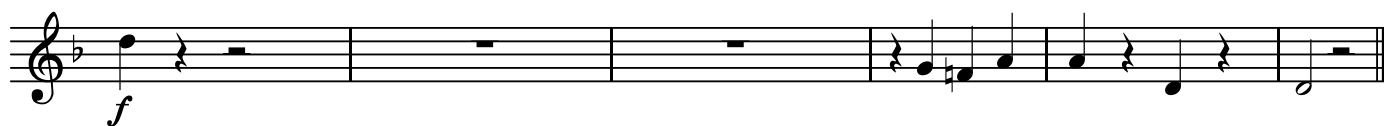
BK=25



BK=26



BK=27



A

ドン・ジョヴァンニ
第2番 行って、無慈悲な人、行って！

BK=1

Musical notation for BK=1, starting with a treble clef, a flat key signature, and a common time signature. It features a series of quarter notes and half notes.

BK=2

Musical notation for BK=2, featuring a series of eighth notes with beams, some with accents, and some notes beamed in pairs.

BK=3

Musical notation for BK=3, featuring a series of eighth notes with beams, some with accents, and some notes beamed in pairs.

BK=4

Musical notation for BK=4, featuring a series of eighth notes with beams, some with accents, and some notes beamed in pairs.

BK=5

Musical notation for BK=5, featuring a series of eighth notes with beams, some with accents, and some notes beamed in pairs.

BK=6

Musical notation for BK=6, featuring a series of eighth notes with beams, some with accents, and some notes beamed in pairs. Dynamics include *cresc.*, *f*, and *sfp*.

BK=7

Musical notation for BK=7, featuring a series of eighth notes with beams, some with accents, and some notes beamed in pairs. Dynamics include *mf* and *p*.

BK=8

Musical notation for BK=8, featuring a series of eighth notes with beams, some with accents, and some notes beamed in pairs. Dynamics include *cresc.*

BK=9

Musical notation for BK=9, featuring a series of eighth notes with beams, some with accents, and some notes beamed in pairs. Dynamics include *f*, *sfp*, *mf*, and *p*.

BK=10

Musical notation for BK=10, featuring a series of eighth notes with beams, some with accents, and some notes beamed in pairs. Dynamics include *f*.

BK=11



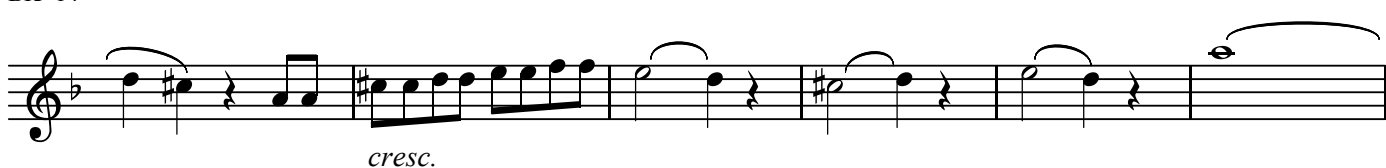
BK=12



BK=13



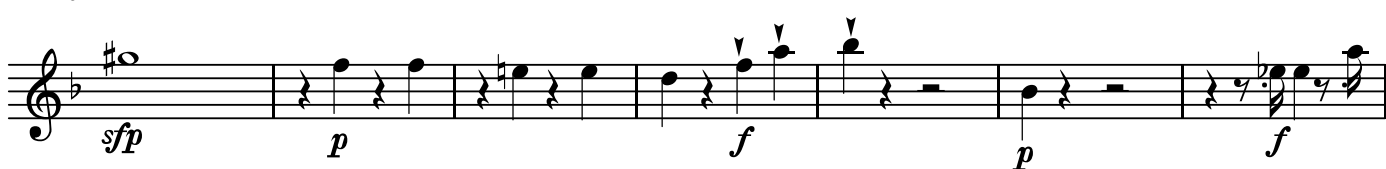
BK=14



BK=15



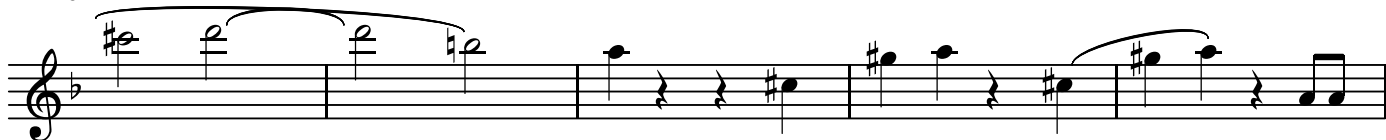
BK=16



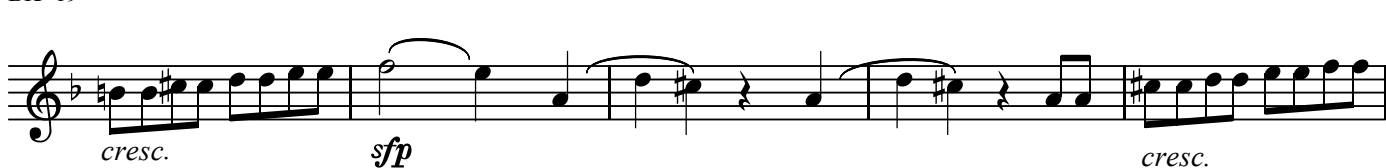
BK=17



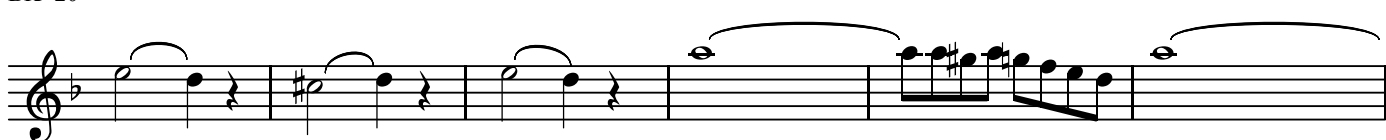
BK=18



BK=19



BK=20



BK=21

Musical staff for BK=21. The staff contains a sequence of notes starting with a slur over the first four notes. The dynamics are marked as *sfp* and *p*.

BK=22

Musical staff for BK=22. The staff contains a sequence of notes with a slur over the last four notes. The dynamics are marked as *f* and *p*.

BK=23

Musical staff for BK=23. The staff contains a sequence of notes with a slur over the last four notes. The dynamics are marked as *f* and *p*.

BK=24

Musical staff for BK=24. The staff contains a sequence of notes with a slur over the last four notes. The dynamics are marked as *f* and *p*.

BK=25

Musical staff for BK=25. The staff contains a sequence of notes with a slur over the last four notes. The dynamics are marked as *f* and *p*.

BK=26

Musical staff for BK=26. The staff contains a sequence of notes with a slur over the last four notes. The dynamics are marked as *f* and *p*. The word *cresc.* is written below the staff.

BK=27

Musical staff for BK=27. The staff contains a sequence of notes with a slur over the first four notes. The dynamic is marked as *f*.

T

ドン・ジョヴァンニ
第2番 行って、無慈悲な人、行って！

BK=1



T
BK=2



BK=3



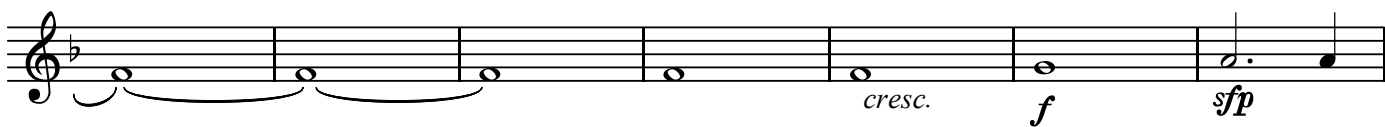
BK=4



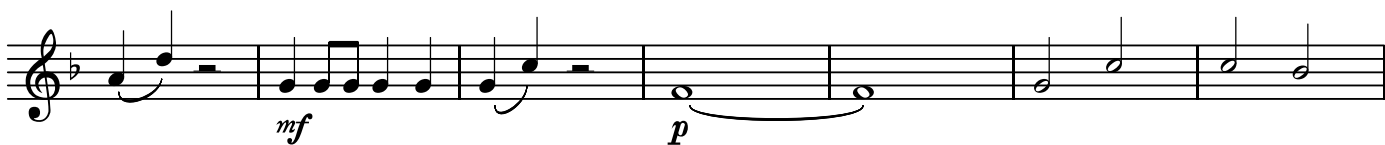
BK=5



BK=6



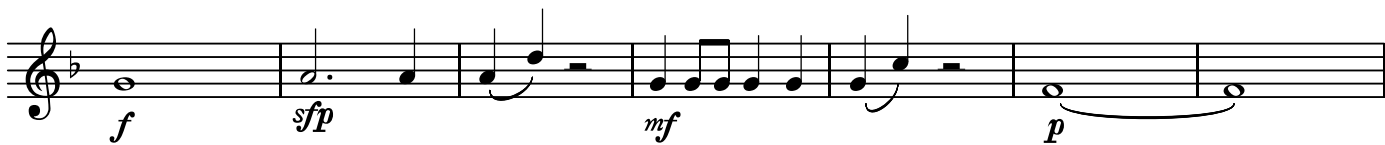
BK=7



BK=8



BK=9



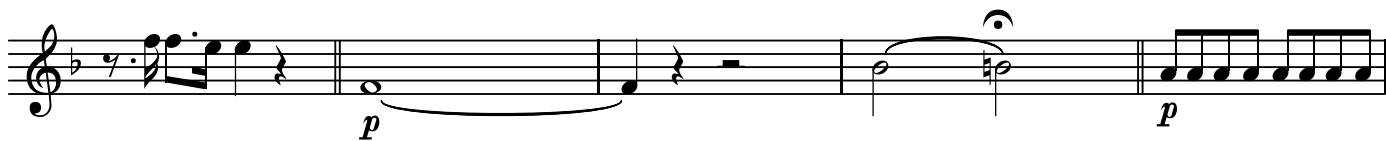
BK=10



BK=11



BK=12



BK=13



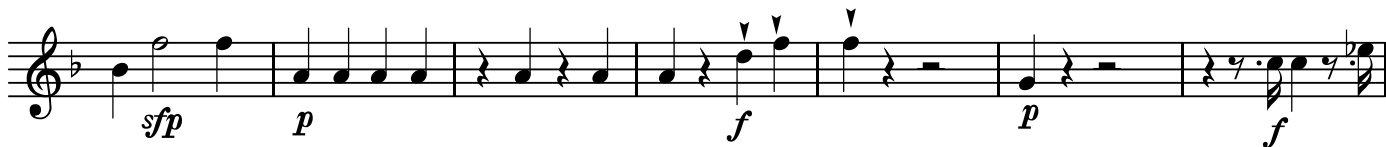
BK=14



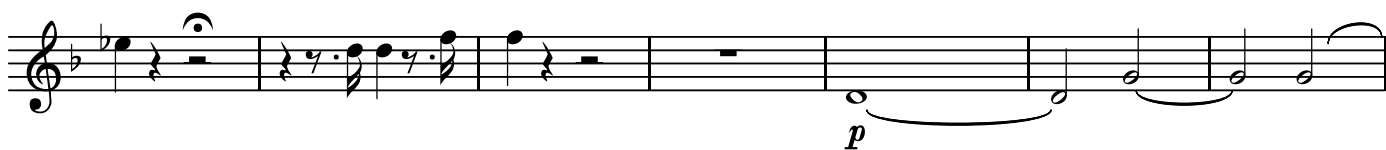
BK=15



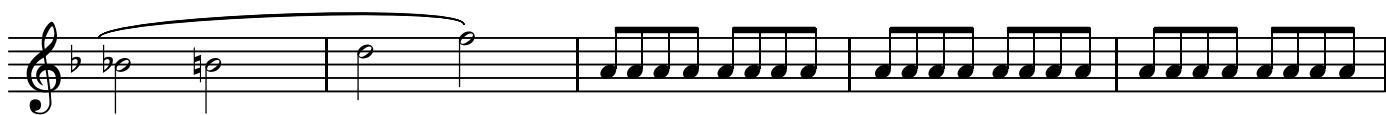
BK=16



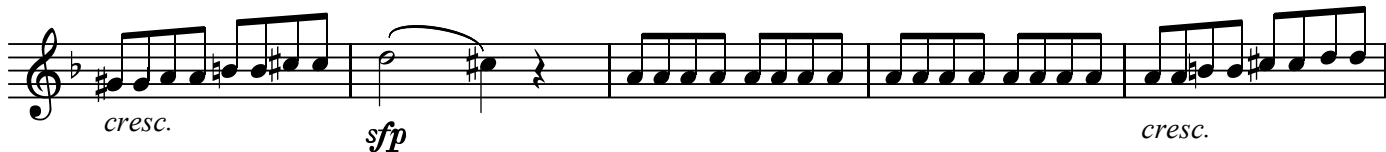
BK=17



BK=18



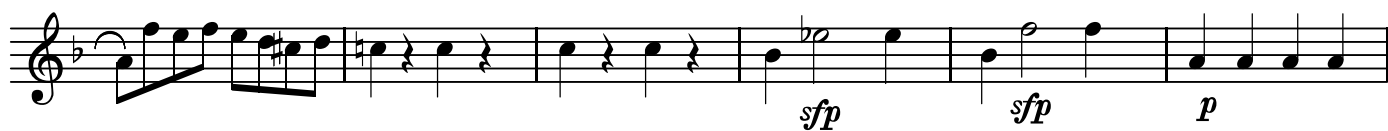
BK=19



BK=20

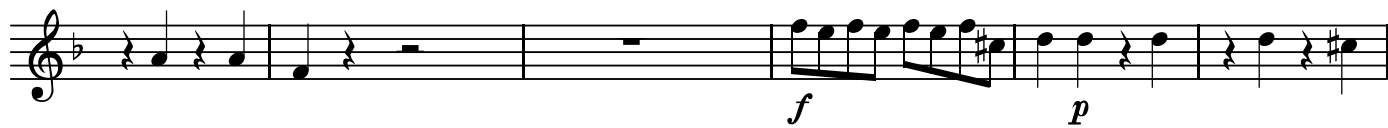


BK=21



Musical notation for BK=21, featuring a treble clef, a key signature of one flat, and a 4/4 time signature. The melody begins with a sixteenth-note run, followed by quarter notes and rests. Dynamic markings include *sfp* and *p*.

BK=22



Musical notation for BK=22, featuring a treble clef, a key signature of one flat, and a 4/4 time signature. The melody starts with quarter notes and rests, followed by a sixteenth-note run. Dynamic markings include *f* and *p*.

BK=23



Musical notation for BK=23, featuring a treble clef, a key signature of one flat, and a 4/4 time signature. The melody starts with quarter notes and rests, followed by a sixteenth-note run. Dynamic markings include *f* and *p*.

BK=24



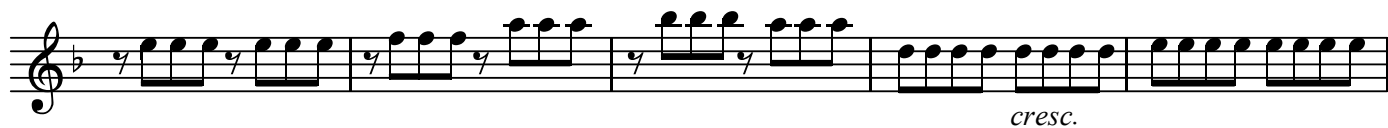
Musical notation for BK=24, featuring a treble clef, a key signature of one flat, and a 4/4 time signature. The melody includes a half note with a slur, followed by a sixteenth-note run. Dynamic markings include *f* and *p*.

BK=25




Musical notation for BK=25, featuring a treble clef, a key signature of one flat, and a 4/4 time signature. The melody includes a half note with a slur, followed by a sixteenth-note run. Dynamic markings include *f* and *p*.

BK=26



Musical notation for BK=26, featuring a treble clef, a key signature of one flat, and a 4/4 time signature. The melody consists of sixteenth-note runs. A *cresc.* marking is present.

BK=27



Musical notation for BK=27, featuring a treble clef, a key signature of one flat, and a 4/4 time signature. The melody starts with a half note, followed by sixteenth-note runs. A *f* marking is present.

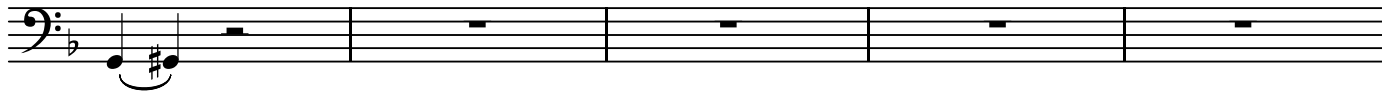
B

ドン・ジョヴァンニ
第2番 行って、無慈悲な人、行って！

BK=1



BK=2



BK=3



BK=4



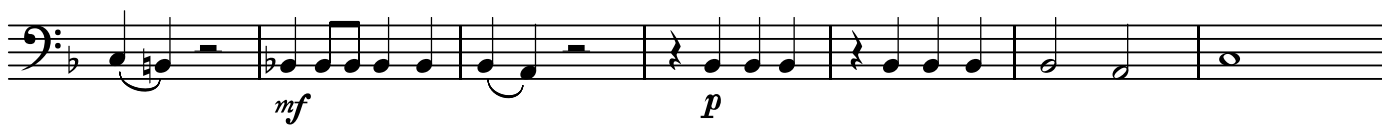
BK=5



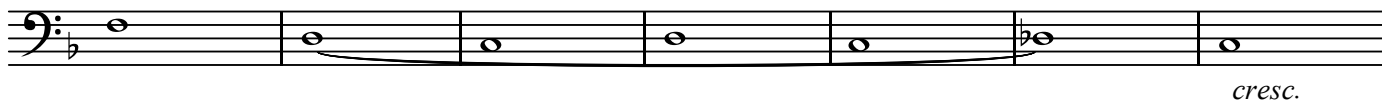
BK=6



BK=7



BK=8



BK=9



BK=10



BK=11



BK=12



BK=13



BK=14



BK=15



BK=16



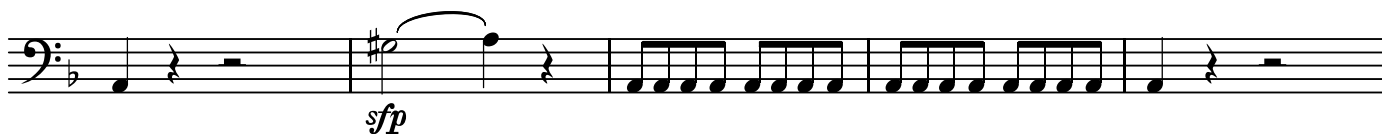
BK=17



BK=18



BK=19



BK=20



BK=21

Musical staff for BK=21, bass clef, 3/4 time signature. The staff contains a sequence of notes with dynamic markings *sfp*, *sfp*, and *p*.

BK=22

Musical staff for BK=22, bass clef, 3/4 time signature. The staff contains a sequence of notes with dynamic markings *f* and *p*.

BK=23

Musical staff for BK=23, bass clef, 3/4 time signature. The staff contains a sequence of notes with dynamic markings *f* and *p*.

BK=24

Musical staff for BK=24, bass clef, 3/4 time signature. The staff contains a sequence of notes with dynamic markings *f* and *p*.

BK=25

Musical staff for BK=25, bass clef, 3/4 time signature. The staff contains a sequence of notes with dynamic markings *f* and *p*, and includes accents.

BK=26

Musical staff for BK=26, bass clef, 3/4 time signature. The staff contains a sequence of notes with dynamic markings *f* and *p*, and includes a *cresc.* marking.

BK=27

Musical staff for BK=27, bass clef, 3/4 time signature. The staff contains a sequence of notes with a dynamic marking *f*.