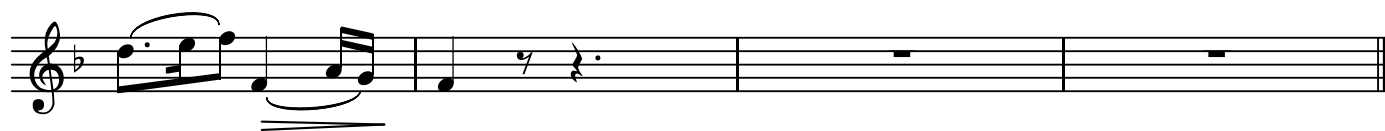


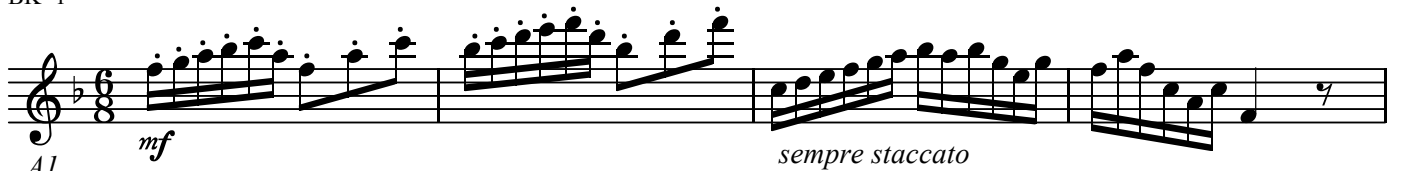
BK=11



A1

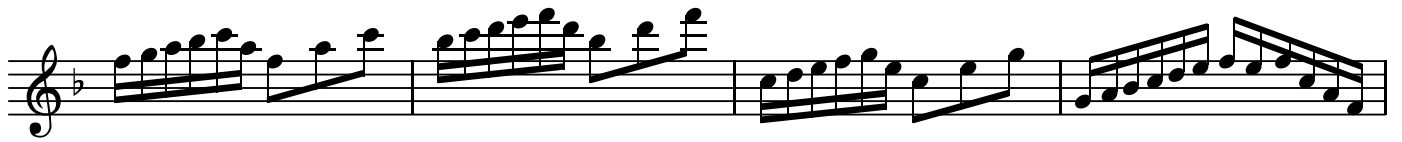
ドン・ジョヴァンニ
第16番 窓辺において(セレナーデ)

BK=1



Musical staff for BK=1, starting with a treble clef, a key signature of one flat (B-flat), and a 6/8 time signature. The music begins with a dynamic marking of *mf* and continues with a *sempre staccato* instruction. The staff contains four measures of music, with a fermata over the final note of the fourth measure.

BK=2



Musical staff for BK=2, continuing the piece with four measures of music.

BK=3



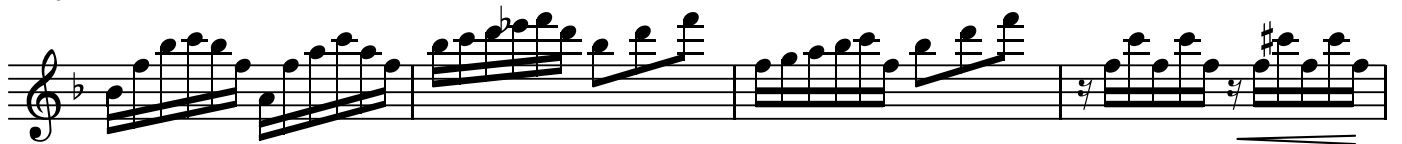
Musical staff for BK=3, continuing the piece with four measures of music.

BK=4



Musical staff for BK=4, continuing the piece with four measures of music.

BK=5



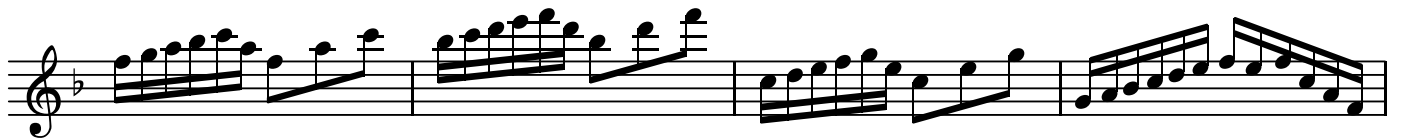
Musical staff for BK=5, continuing the piece with four measures of music.

BK=6



Musical staff for BK=6, continuing the piece with four measures of music.

BK=7



Musical staff for BK=7, continuing the piece with four measures of music.

BK=8



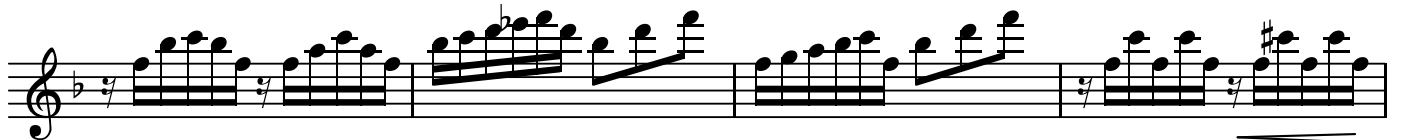
Musical staff for BK=8, continuing the piece with four measures of music.

BK=9



Musical staff for BK=9, continuing the piece with four measures of music.

BK=10



Musical staff for BK=10, continuing the piece with four measures of music.

BK=11



A2

ドン・ジョヴァンニ
第16番 窓辺において(セレナーデ)

BK=1

p

A2
BK=2

BK=3

BK=4

BK=5

BK=6

BK=7

BK=8

BK=9

BK=10

BK=11



T

ドン・ジョヴァンニ
第16番 窓辺においで(セレナーデ)

BK=1



BK=2



BK=3



BK=4



BK=5



BK=6



BK=7



BK=8



BK=9



BK=10



BK=11



B

ドン・ジョヴァンニ
第16番 窓辺においで(セレナーデ)

BK=1



BK=2



BK=3



BK=4



BK=5



BK=6



BK=7



BK=8



BK=9



BK=10



BK=11

