

BK=11



BK=12



BK=13



BK=14



BK=15



A1

ドン・ジョヴァンニ
第13番 終曲-3 ひと休みしなさい、可愛い娘さんたち

BK=1

Musical staff BK=1, starting with a treble clef and a 6/8 time signature. The staff contains six measures of music. The first measure has a forte (*f*) dynamic. The second and third measures have a piano (*p*) dynamic. The fourth measure has a forte (*f*) dynamic. The fifth and sixth measures have a piano (*p*) dynamic. The staff is marked with *Al* at the beginning.

BK=2

Musical staff BK=2, starting with a treble clef and a 6/8 time signature. The staff contains six measures of music. The first measure has a piano (*p*) dynamic. The second and third measures have a forte (*f*) dynamic. The fourth measure has a piano (*p*) dynamic. The fifth and sixth measures have a piano (*p*) dynamic.

BK=3

Musical staff BK=3, starting with a treble clef and a 6/8 time signature. The staff contains six measures of music. The first measure has a forte (*f*) dynamic. The second measure has a piano (*p*) dynamic. The third measure has a forte (*f*) dynamic. The fourth measure has a piano (*p*) dynamic. The fifth and sixth measures have a forte (*f*) dynamic.

BK=4

Musical staff BK=4, starting with a treble clef and a 6/8 time signature. The staff contains six measures of music. The first measure has a *cresc.* dynamic. The second measure has a forte (*f*) dynamic. The third measure has a piano (*p*) dynamic. The fourth and fifth measures have a forte (*f*) dynamic. The sixth measure has a piano (*p*) dynamic.

BK=5

Musical staff BK=5, starting with a treble clef and a 6/8 time signature. The staff contains six measures of music. The first measure has a forte (*f*) dynamic. The second measure has a piano (*p*) dynamic. The third measure has a forte (*f*) dynamic. The fourth measure has a piano (*p*) dynamic. The fifth and sixth measures have a forte (*f*) dynamic.

BK=6

Musical staff BK=6, starting with a treble clef and a 6/8 time signature. The staff contains six measures of music. The first measure has a forte (*f*) dynamic. The second measure has a piano (*p*) dynamic. The third measure has a forte (*f*) dynamic. The fourth measure has a piano (*p*) dynamic. The fifth and sixth measures have a forte (*f*) dynamic.

BK=7

Musical staff BK=7, starting with a treble clef and a 6/8 time signature. The staff contains six measures of music. The first measure has a forte (*f*) dynamic. The second measure has a piano (*p*) dynamic. The third measure has a forte (*f*) dynamic. The fourth measure has a piano (*p*) dynamic. The fifth and sixth measures have a forte (*f*) dynamic. A trill (*tr*) is indicated above the second measure.

BK=8

Musical staff BK=8, starting with a treble clef and a 6/8 time signature. The staff contains six measures of music. The first measure has a forte (*f*) dynamic. The second measure has a piano (*p*) dynamic. The third measure has a forte (*f*) dynamic. The fourth measure has a piano (*p*) dynamic. The fifth and sixth measures have a forte (*f*) dynamic.

BK=9

Musical staff BK=9, starting with a treble clef and a 6/8 time signature. The staff contains six measures of music. The first measure has a forte (*f*) dynamic. The second measure has a piano (*p*) dynamic. The third measure has a forte (*f*) dynamic. The fourth measure has a piano (*p*) dynamic. The fifth and sixth measures have a forte (*f*) dynamic.

BK=10

Musical staff BK=10, starting with a treble clef and a 6/8 time signature. The staff contains six measures of music. The first measure has a forte (*f*) dynamic. The second measure has a piano (*p*) dynamic. The third measure has a forte (*f*) dynamic. The fourth measure has a piano (*p*) dynamic. The fifth and sixth measures have a forte (*f*) dynamic. A *cresc.* dynamic is indicated below the third measure.

BK=11



BK=12



BK=13



BK=14



BK=15



A2

ドン・ジョヴァンニ
第13番 終曲-3 ひと休みしなさい、可愛い娘さんたち

BK=1

Musical staff for BK=1, starting with a treble clef and a 6/8 time signature. The music begins with a forte (*f*) dynamic. The staff contains six measures of music, with a second forte (*f*) dynamic marking at the end.

BK=2

Musical staff for BK=2, continuing the melody from the previous staff. It contains six measures of music.

BK=3

Musical staff for BK=3, featuring a forte (*f*) dynamic marking. The staff contains six measures of music.

BK=4

Musical staff for BK=4, starting with a *cresc.* (crescendo) marking and a forte (*f*) dynamic. The staff contains six measures of music.

BK=5

Musical staff for BK=5, continuing the melodic line with various rhythmic patterns. The staff contains six measures of music.

BK=6

Musical staff for BK=6, continuing the melodic line. The staff contains six measures of music.

BK=7

Musical staff for BK=7, consisting of six measures of whole rests.

BK=8

Musical staff for BK=8, starting with a forte (*f*) dynamic. The staff contains six measures of music.

BK=9

Musical staff for BK=9, continuing the melodic line with various rhythmic patterns. The staff contains six measures of music.

BK=10

Musical staff for BK=10, starting with a *cresc.* (crescendo) marking and a forte (*f*) dynamic. The staff contains six measures of music.

BK=11



BK=12



BK=13



BK=14



BK=15



T

ドン・ジョヴァンニ
第13番 終曲-3 ひと休みしなさい、可愛い娘さんたち

BK=1



BK=2



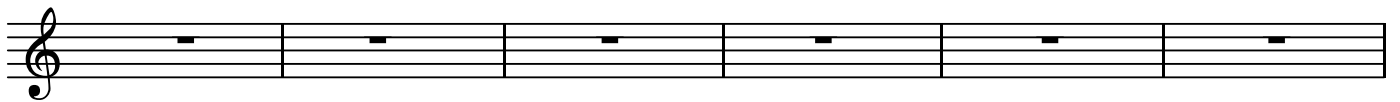
BK=3



BK=4



BK=5



BK=6



BK=7



BK=8



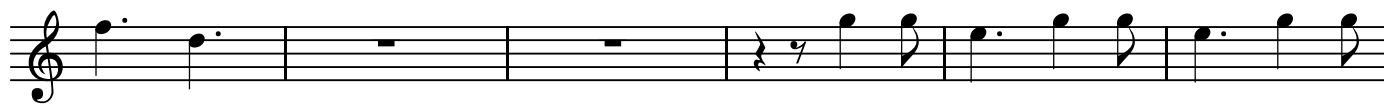
BK=9



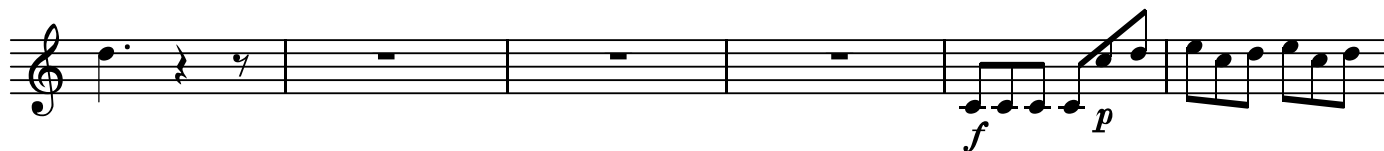
BK=10



BK=11



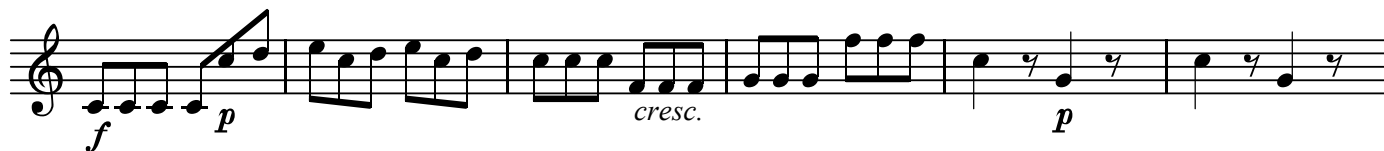
BK=12



BK=13



BK=14



BK=15



B

ドン・ジョヴァンニ
第13番 終曲-3 ひと休みしなさい、可愛い娘さんたち

BK=1



BK=2



BK=3



BK=4



BK=5



BK=6



BK=7



BK=8



BK=9



BK=10



BK=11



BK=12



BK=13



BK=14



BK=15

