

A

No. 12

BK=1



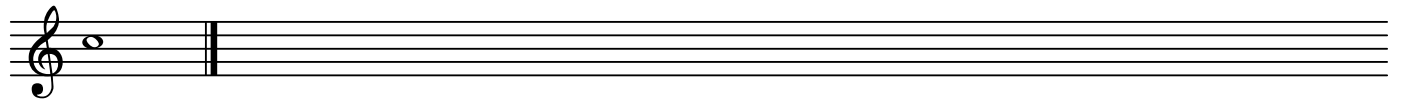
A musical staff in treble clef with a common time signature (C). The melody begins with a dotted quarter note on G4, followed by an eighth note on A4, and a quarter note on B4. The next two measures contain eighth notes: G4-A4, A4-B4, B4-C5, and C5-B4. The fifth measure features a half note on B4 with a slur over it. The sixth measure has a quarter note on A4, followed by eighth notes G4-A4 and B4-C5. The seventh measure has a quarter note on B4, followed by eighth notes A4-B4 and C5-B4. The eighth measure has a half note on B4 with a slur over it. The ninth measure has a quarter note on A4, followed by eighth notes G4-A4 and B4-C5. The tenth measure has a quarter note on B4, followed by eighth notes A4-B4 and C5-B4. The eleventh measure has a half note on B4 with a slur over it. The twelfth measure has a quarter note on A4, followed by eighth notes G4-A4 and B4-C5. The thirteenth measure has a quarter note on B4, followed by eighth notes A4-B4 and C5-B4. The piece ends with a half note on B4 with a slur over it.

BK=2



A musical staff in treble clef with a common time signature (C). The melody begins with a quarter note on G4, followed by eighth notes A4-B4, B4-C5, and C5-B4. The second measure has a quarter note on B4, followed by eighth notes A4-B4 and C5-B4. The third measure has a quarter note on B4, followed by eighth notes A4-B4 and C5-B4. The fourth measure has a quarter note on B4, followed by eighth notes A4-B4 and C5-B4. The fifth measure has a quarter note on B4 with a sharp sign (#) above it, followed by eighth notes A4-B4 and C5-B4. The sixth measure has a half note on B4 with a slur over it. The seventh measure has a quarter note on A4, followed by eighth notes G4-A4 and B4-C5. The eighth measure has a quarter note on B4, followed by eighth notes A4-B4 and C5-B4. The ninth measure has a quarter note on B4, followed by eighth notes A4-B4 and C5-B4. The tenth measure has a quarter note on B4, followed by eighth notes A4-B4 and C5-B4. The eleventh measure has a quarter note on B4, followed by eighth notes A4-B4 and C5-B4. The twelfth measure has a quarter note on B4, followed by eighth notes A4-B4 and C5-B4. The thirteenth measure has a quarter note on B4, followed by eighth notes A4-B4 and C5-B4. The piece ends with a half note on B4.

BK=3

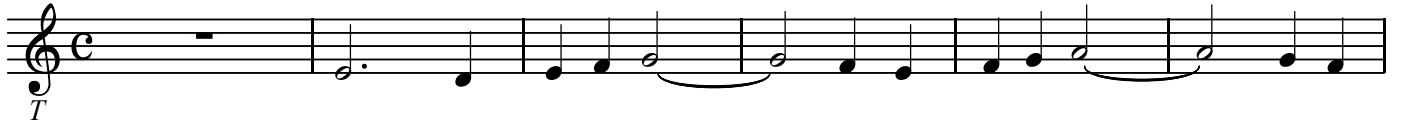


A musical staff in treble clef with a common time signature (C). The staff begins with a quarter note on G4, followed by a double bar line. The rest of the staff is empty.

T

No. 12

BK=1



BK=2



BK=3

