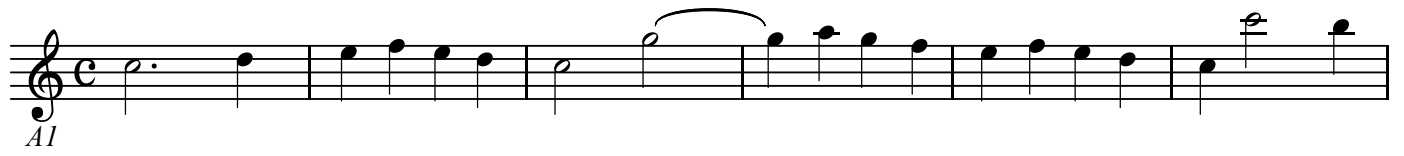


A1

三声のカノン「陽気と気軽さは」 KV507

W.A.Mozart

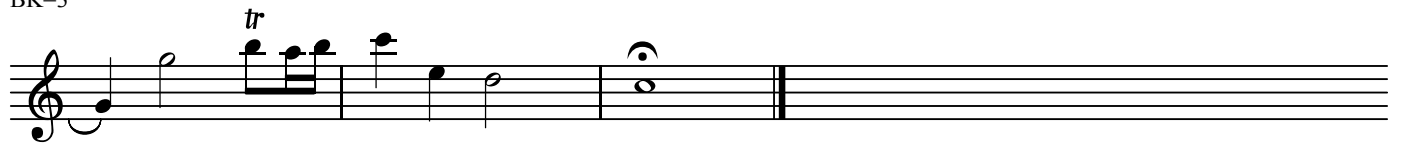
BK=1



BK=2



BK=3



A2

三声のカノン「陽気と気軽さは」 KV507

W.A.Mozart

BK=1



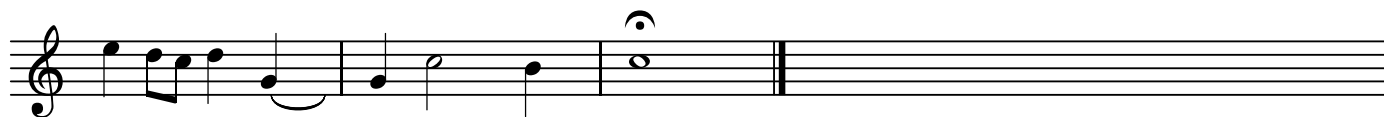
Musical notation for BK=1, starting with a treble clef and a common time signature (C). The melody begins with a whole rest, followed by a dotted quarter note G4, an eighth note A4, and a quarter note B4. The next measure contains a quarter note C5, a quarter note B4, and a quarter note A4. The final measure features a half note G4 with a slur over it, followed by a quarter note F4, a quarter note E4, and a quarter note D4.

BK=2



Musical notation for BK=2, starting with a treble clef and a common time signature (C). The melody begins with a quarter note G4, a quarter note A4, and a quarter note B4. The next measure contains a quarter note C5, a quarter note B4, and a quarter note A4. The final measure features a half note G4 with a slur over it, followed by a quarter note F4, a quarter note E4, and a quarter note D4.

BK=3



Musical notation for BK=3, starting with a treble clef and a common time signature (C). The melody begins with a quarter note G4, a quarter note A4, and a quarter note B4. The next measure contains a quarter note C5, a quarter note B4, and a quarter note A4. The final measure features a half note G4 with a slur over it, followed by a quarter note F4, a quarter note E4, and a quarter note D4.

B

三声のカノン「陽気と気軽さは」 KV507

W.A.Mozart

BK=1

Musical notation for BK=1, bass clef, common time signature. The notation starts with two measures of whole rests. The third measure begins with a dotted quarter note on G2, followed by eighth notes on F2, E2, D2, C2, and B1. The fourth measure continues with eighth notes on A1, G1, and F1. The fifth measure features a dotted quarter note on E1, followed by an eighth note on D1. The sixth measure contains a half note on C1, which is beamed with the eighth notes of the fifth measure. The seventh measure has a dotted quarter note on B1, followed by eighth notes on A1, G1, and F1. The eighth measure concludes with a dotted quarter note on E1.

BK=2

Musical notation for BK=2, bass clef, common time signature. The notation begins with eighth notes on G2, F2, E2, D2, and C2. The second measure continues with eighth notes on B1, A1, G1, and F1, followed by a quarter note on E1 with an accent (>). The third measure starts with a quarter note on D1, followed by eighth notes on C1, B1, A1, and G1. The fourth measure continues with eighth notes on F1, E1, D1, and C1. The fifth measure has a dotted quarter note on B1, followed by eighth notes on A1, G1, and F1. The sixth measure concludes with a dotted quarter note on E1.

BK=3

Musical notation for BK=3, bass clef, common time signature. The notation starts with eighth notes on G2, F2, E2, D2, and C2. The second measure continues with eighth notes on B1, A1, G1, and F1. The third measure has a dotted quarter note on E1, followed by an eighth note on D1, which is beamed with the eighth notes of the second measure. The fourth measure concludes with a dotted quarter note on C1, followed by a double bar line.