

フィガロの結婚  
第27番 恋人よ、早くここへ

BK=1 Andante



BK=2



BK=3



BK=4



BK=5



BK=6



BK=7



BK=8



BK=9



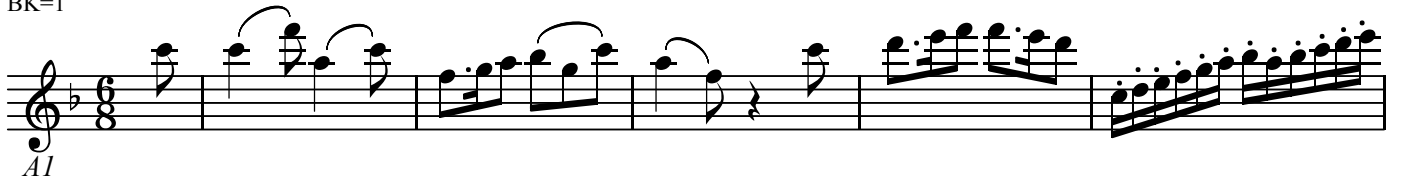
BK=10



A1

フィガロの結婚  
第27番 恋人よ、早くここへ

BK=1



Musical notation for BK=1, starting with a treble clef, a key signature of one flat (B-flat), and a 6/8 time signature. The piece begins with a series of eighth notes, followed by a more complex rhythmic pattern with sixteenth notes and a final flourish of sixteenth notes.

BK=2



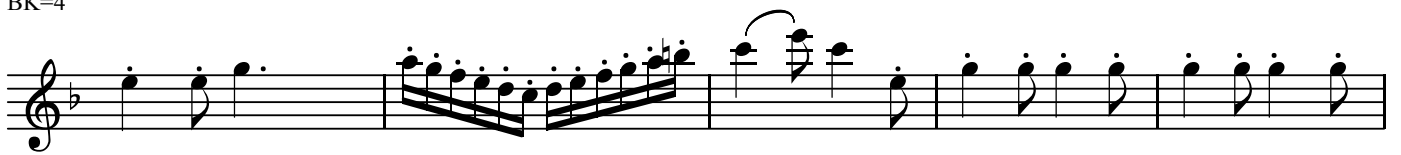
Musical notation for BK=2, starting with a treble clef, a key signature of one flat, and a 6/8 time signature. The piece begins with a series of sixteenth notes, followed by a series of eighth notes, and ends with a series of quarter notes. A dynamic marking of *p* (piano) is present.

BK=3



Musical notation for BK=3, starting with a treble clef, a key signature of one flat, and a 6/8 time signature. The piece begins with a series of eighth notes, followed by a series of quarter notes, and ends with a series of eighth notes.

BK=4



Musical notation for BK=4, starting with a treble clef, a key signature of one flat, and a 6/8 time signature. The piece begins with a series of quarter notes, followed by a series of sixteenth notes, and ends with a series of quarter notes.

BK=5



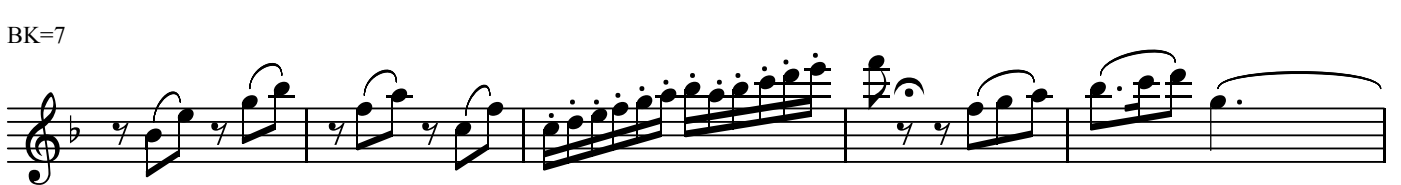
Musical notation for BK=5, starting with a treble clef, a key signature of one flat, and a 6/8 time signature. The piece begins with a series of sixteenth notes, followed by a series of quarter notes, and ends with a series of quarter notes.

BK=6



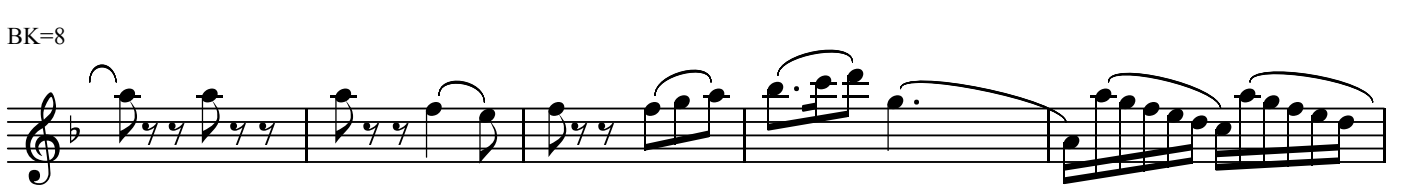
Musical notation for BK=6, starting with a treble clef, a key signature of one flat, and a 6/8 time signature. The piece begins with a series of eighth notes, followed by a series of quarter notes, and ends with a series of eighth notes.

BK=7



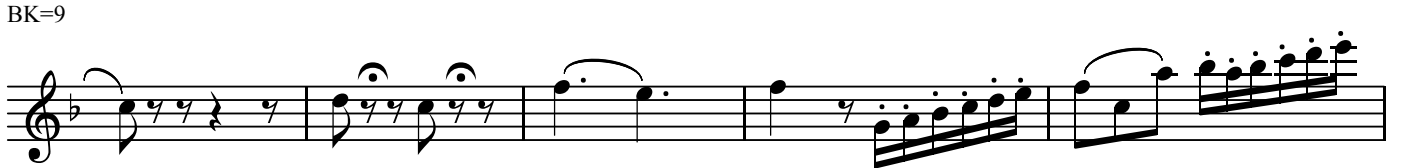
Musical notation for BK=7, starting with a treble clef, a key signature of one flat, and a 6/8 time signature. The piece begins with a series of eighth notes, followed by a series of quarter notes, and ends with a series of eighth notes.

BK=8



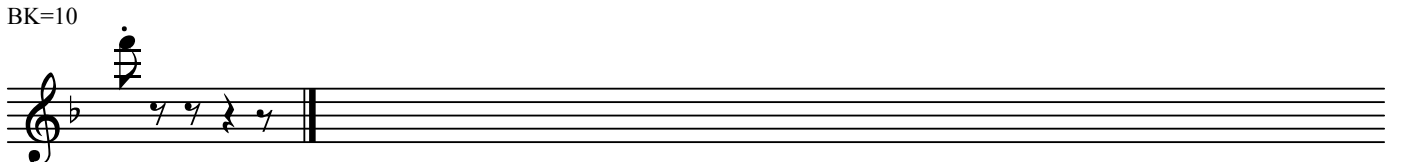
Musical notation for BK=8, starting with a treble clef, a key signature of one flat, and a 6/8 time signature. The piece begins with a series of eighth notes, followed by a series of quarter notes, and ends with a series of eighth notes.

BK=9



Musical notation for BK=9, starting with a treble clef, a key signature of one flat, and a 6/8 time signature. The piece begins with a series of eighth notes, followed by a series of quarter notes, and ends with a series of eighth notes.

BK=10



Musical notation for BK=10, starting with a treble clef, a key signature of one flat, and a 6/8 time signature. The piece begins with a series of eighth notes, followed by a series of quarter notes, and ends with a series of eighth notes.

A2

フィガロの結婚  
第27番 恋人よ、早くここへ

BK=1



Musical notation for BK=1, starting with a treble clef, a key signature of one flat (B-flat), and a 6/8 time signature. The piece begins with a 7-measure rest, followed by a series of eighth and sixteenth notes, ending with a sixteenth-note flourish.

BK=2



Musical notation for BK=2, continuing the melody with a piano (*p*) dynamic marking. It features a mix of eighth and sixteenth notes with some rests.

BK=3



Musical notation for BK=3, showing a continuation of the melodic line with various rhythmic values and a key signature change to two flats (B-flat and E-flat).

BK=4



Musical notation for BK=4, featuring a melodic phrase with a key signature change to one flat (B-flat) and a 7-measure rest.

BK=5



Musical notation for BK=5, characterized by a series of sixteenth-note runs and eighth notes.

BK=6



Musical notation for BK=6, consisting of a steady eighth-note melody.

BK=7



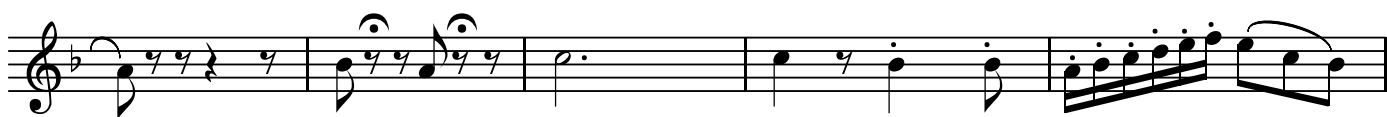
Musical notation for BK=7, featuring a melodic line with eighth notes and some rests.

BK=8



Musical notation for BK=8, showing a melodic phrase with eighth notes and a sixteenth-note flourish at the end.

BK=9



Musical notation for BK=9, featuring a melodic line with eighth notes and a sixteenth-note flourish.

BK=10



Musical notation for BK=10, consisting of a short melodic phrase followed by a double bar line.

T

フィガロの結婚  
第27番 恋人よ、早くここへ

BK=1



BK=2



BK=3



BK=4



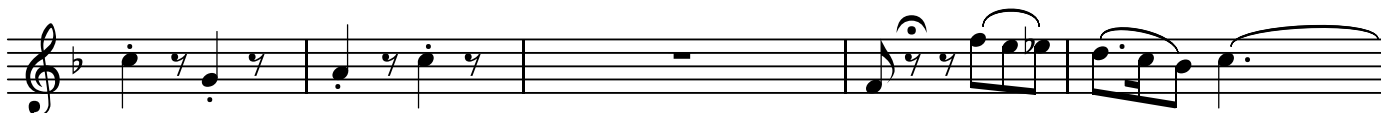
BK=5



BK=6



BK=7



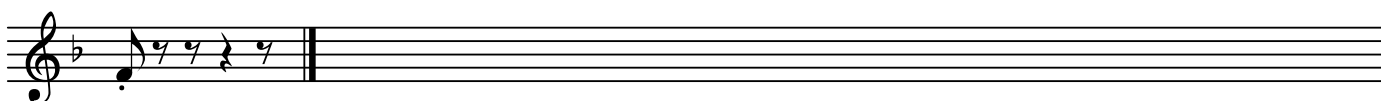
BK=8



BK=9



BK=10



B

フィガロの結婚  
第27番 恋人よ、早くここへ

BK=1



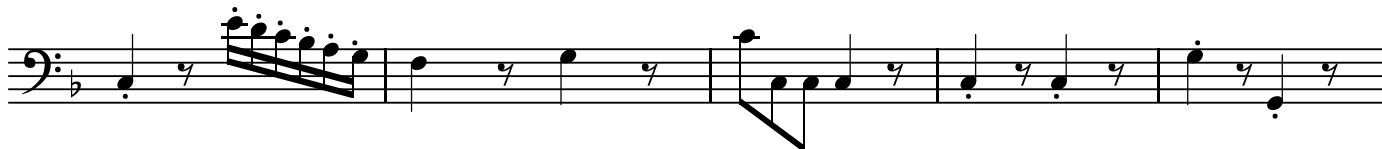
BK=2



BK=3



BK=4



BK=5



BK=6



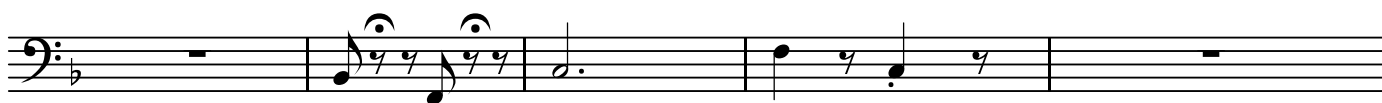
BK=7



BK=8



BK=9



BK=10

