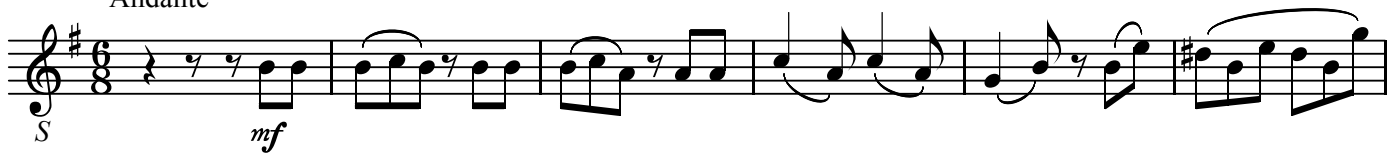


フィガロの結婚
第23番 落としてしまった…どうしよう

BK=1

Andante



BK=2



BK=3



BK=4



BK=5



BK=6



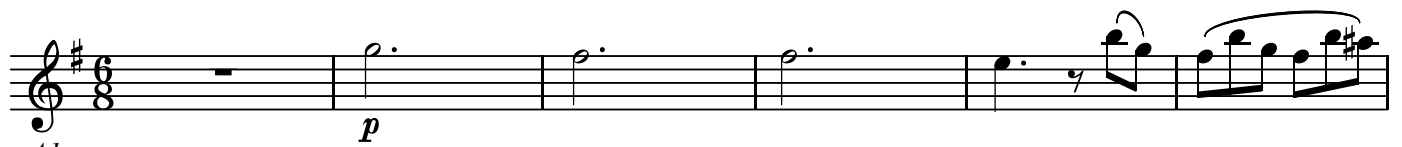
BK=7



A1

フィガロの結婚
第23番 落としてしまった…どうしよう

BK=1



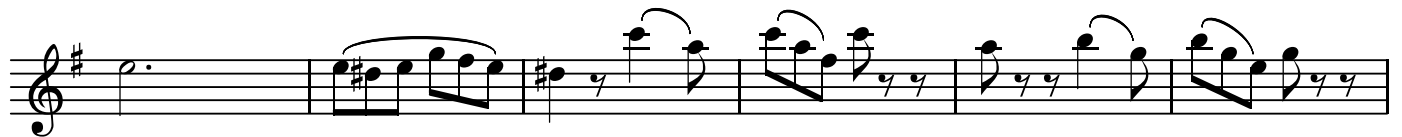
Musical staff for BK=1. The staff is in treble clef with a key signature of one sharp (F#) and a time signature of 6/8. It begins with a whole rest. The first measure contains a half note G4. The second measure contains a half note A4. The third measure contains a half note B4. The fourth measure contains a quarter note C5, a quarter note B4, and a quarter note A4. The fifth measure contains a quarter note G4, a quarter note F#4, and a quarter note E4. The sixth measure contains a quarter note D4, a quarter note C4, and a quarter note B3. The dynamic marking *p* is placed below the first measure.

A1
BK=2



Musical staff for BK=2. The staff is in treble clef with a key signature of one sharp (F#) and a time signature of 6/8. It begins with a quarter note G4, a quarter note A4, and a quarter note B4. The second measure contains a quarter note C5, a quarter note B4, and a quarter note A4. The third measure contains a quarter note G4, a quarter note F#4, and a quarter note E4. The fourth measure contains a quarter note D4, a quarter note C4, and a quarter note B3. The fifth measure contains a half note G4. The sixth measure contains a half note A4.

BK=3



Musical staff for BK=3. The staff is in treble clef with a key signature of one sharp (F#) and a time signature of 6/8. It begins with a half note G4. The second measure contains a quarter note A4, a quarter note B4, and a quarter note C5. The third measure contains a quarter note B4, a quarter note A4, and a quarter note G4. The fourth measure contains a quarter note F#4, a quarter note E4, and a quarter note D4. The fifth measure contains a quarter note C4, a quarter note B3, and a quarter note A3. The sixth measure contains a quarter note G3, a quarter note F#3, and a quarter note E3.

BK=4



Musical staff for BK=4. The staff is in treble clef with a key signature of one sharp (F#) and a time signature of 6/8. It begins with a quarter note G4, a quarter note A4, and a quarter note B4. The second measure contains a quarter note C5, a quarter note B4, and a quarter note A4. The third measure contains a quarter note G4, a quarter note F#4, and a quarter note E4. The fourth measure contains a quarter note D4, a quarter note C4, and a quarter note B3. The fifth measure contains a quarter note A3, a quarter note G3, and a quarter note F#3. The sixth measure contains a quarter note E3, a quarter note D3, and a quarter note C3.

BK=5



Musical staff for BK=5. The staff is in treble clef with a key signature of one sharp (F#) and a time signature of 6/8. It begins with a quarter note G4, a quarter note A4, and a quarter note B4. The second measure contains a quarter note C5, a quarter note B4, and a quarter note A4. The third measure contains a quarter note G4, a quarter note F#4, and a quarter note E4. The fourth measure contains a quarter note D4, a quarter note C4, and a quarter note B3. The fifth measure contains a quarter note A3, a quarter note G3, and a quarter note F#3. The sixth measure contains a quarter note E3, a quarter note D3, and a quarter note C3.

BK=6



Musical staff for BK=6. The staff is in treble clef with a key signature of one sharp (F#) and a time signature of 6/8. It begins with a quarter note G4, a quarter note A4, and a quarter note B4. The second measure contains a quarter note C5, a quarter note B4, and a quarter note A4. The third measure contains a quarter note G4, a quarter note F#4, and a quarter note E4. The fourth measure contains a quarter note D4, a quarter note C4, and a quarter note B3. The fifth measure contains a quarter note A3, a quarter note G3, and a quarter note F#3. The sixth measure contains a quarter note E3, a quarter note D3, and a quarter note C3.

BK=7

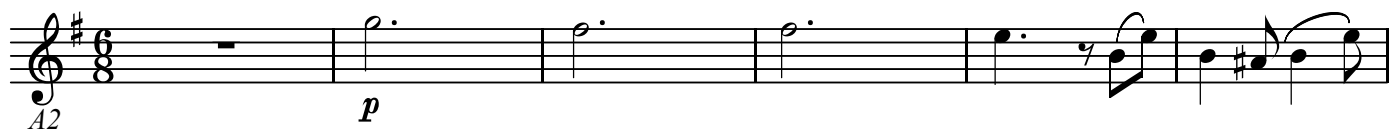


Musical staff for BK=7. The staff is in treble clef with a key signature of one sharp (F#) and a time signature of 6/8. It begins with a half note G4. The second measure contains a half note A4. The third measure contains a quarter note B4, a quarter note C5, and a quarter note B4. The fourth measure contains a quarter note A4, a quarter note G4, and a quarter note F#4. The fifth measure contains a quarter note E4, a quarter note D4, and a quarter note C4. The sixth measure contains a quarter note B3, a quarter note A3, and a quarter note G3. The piece ends with a double bar line.

A2

フィガロの結婚
第23番 落としてしまった…どうしよう

BK=1



Musical notation for BK=1, starting with a treble clef, a key signature of one sharp (F#), and a 6/8 time signature. The first measure contains a whole rest. The second measure begins with a piano (*p*) dynamic marking and features a half note G4. The piece continues with a series of half notes: A4, B4, C5, and D5. The final measure contains a quarter note G4, a quarter note F#4, and a quarter note E4.

BK=2



Musical notation for BK=2, continuing from BK=1. It features a series of eighth notes: G4, A4, B4, C5, D5, E5, F#5, and G5. This is followed by a quarter rest, a quarter note G4, and a quarter note F#4.

BK=3



Musical notation for BK=3, continuing from BK=2. It features a series of eighth notes: G4, A4, B4, C5, D5, E5, F#5, and G5. This is followed by a quarter note G4, a quarter note F#4, and a quarter note E4.

BK=4



Musical notation for BK=4, continuing from BK=3. It features a series of eighth notes: G4, A4, B4, C5, D5, E5, F#5, and G5. This is followed by a quarter note G4, a quarter note F#4, and a quarter note E4.

BK=5



Musical notation for BK=5, continuing from BK=4. It features a series of eighth notes: G4, A4, B4, C5, D5, E5, F#5, and G5. This is followed by a quarter note G4, a quarter note F#4, and a quarter note E4.

BK=6



Musical notation for BK=6, continuing from BK=5. It features a series of eighth notes: G4, A4, B4, C5, D5, E5, F#5, and G5. This is followed by a quarter note G4, a quarter note F#4, and a quarter note E4.

BK=7



Musical notation for BK=7, continuing from BK=6. It features a series of eighth notes: G4, A4, B4, C5, D5, E5, F#5, and G5. This is followed by a quarter note G4, a quarter note F#4, and a quarter note E4. The piece concludes with a double bar line.

T

フィガロの結婚
第23番 落としてしまった…どうしよう

BK=1



Musical notation for BK=1, starting with a treble clef, a key signature of one sharp (F#), and a 6/8 time signature. The notation includes a dynamic marking of *p* and a *T* marking. The melody consists of eighth notes and quarter notes, with a final measure containing a quarter rest and an eighth note.

BK=2



Musical notation for BK=2, continuing the melody from BK=1. It features a treble clef, a key signature of one sharp, and a 6/8 time signature. The notation includes a dynamic marking of *p* and a *T* marking. The melody consists of eighth notes and quarter notes, with a final measure containing a quarter rest and an eighth note.

BK=3



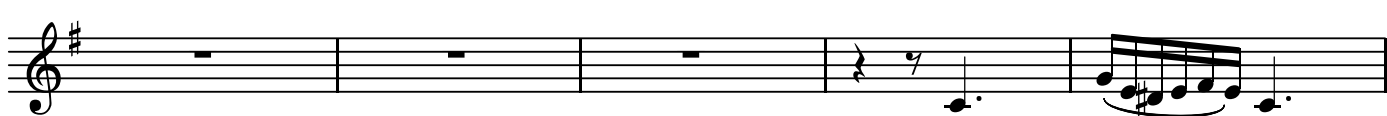
Musical notation for BK=3, continuing the melody from BK=2. It features a treble clef, a key signature of one sharp, and a 6/8 time signature. The notation includes a dynamic marking of *p* and a *T* marking. The melody consists of eighth notes and quarter notes, with a final measure containing a quarter rest and an eighth note.

BK=4



Musical notation for BK=4, continuing the melody from BK=3. It features a treble clef, a key signature of one sharp, and a 6/8 time signature. The notation includes a dynamic marking of *p* and a *T* marking. The melody consists of eighth notes and quarter notes, with a final measure containing a quarter rest and an eighth note.

BK=5



Musical notation for BK=5, continuing the melody from BK=4. It features a treble clef, a key signature of one sharp, and a 6/8 time signature. The notation includes a dynamic marking of *p* and a *T* marking. The melody consists of eighth notes and quarter notes, with a final measure containing a quarter rest and an eighth note.

BK=6



Musical notation for BK=6, continuing the melody from BK=5. It features a treble clef, a key signature of one sharp, and a 6/8 time signature. The notation includes a dynamic marking of *p* and a *T* marking. The melody consists of eighth notes and quarter notes, with a final measure containing a quarter rest and an eighth note.

BK=7



Musical notation for BK=7, continuing the melody from BK=6. It features a treble clef, a key signature of one sharp, and a 6/8 time signature. The notation includes a dynamic marking of *p* and a *T* marking. The melody consists of eighth notes and quarter notes, with a final measure containing a quarter rest and an eighth note.

B

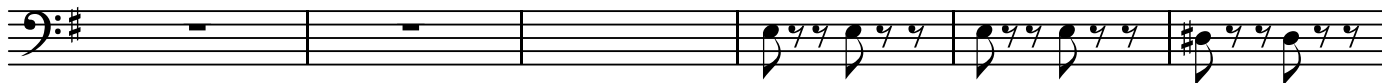
フィガロの結婚
第23番 落としてしまった…どうしよう

BK=1



Musical notation for BK=1, featuring a bass clef, a key signature of one sharp (F#), and a 6/8 time signature. The notation consists of six measures of music, primarily composed of eighth and sixteenth notes. The first measure is marked with a dynamic of *B* (Basso) and the second measure with a dynamic of *p* (piano).

BK=2



Musical notation for BK=2, featuring a bass clef, a key signature of one sharp (F#), and a 6/8 time signature. The notation consists of six measures, with the first three measures being rests and the last three measures containing eighth and sixteenth notes.

BK=3



Musical notation for BK=3, featuring a bass clef, a key signature of one sharp (F#), and a 6/8 time signature. The notation consists of six measures, with eighth and sixteenth notes in the first four measures and rests in the last two.

BK=4



Musical notation for BK=4, featuring a bass clef, a key signature of one sharp (F#), and a 6/8 time signature. The notation consists of six measures, with eighth and sixteenth notes in the first two measures and dotted notes in the remaining four.

BK=5



Musical notation for BK=5, featuring a bass clef, a key signature of one sharp (F#), and a 6/8 time signature. The notation consists of six measures, with the first three being rests and the last three containing dotted notes.

BK=6



Musical notation for BK=6, featuring a bass clef, a key signature of one sharp (F#), and a 6/8 time signature. The notation consists of six measures, with dotted notes and eighth notes throughout.

BK=7



Musical notation for BK=7, featuring a bass clef, a key signature of one sharp (F#), and a 6/8 time signature. The notation consists of six measures, with a fermata over the second measure and eighth notes in the remaining measures, ending with a double bar line.