

S1

フィガロの結婚  
第22番 終曲ー4 花嫁も花婿も(合唱)

BK=1

Allegretto



BK=2



BK=3



BK=4



BK=5



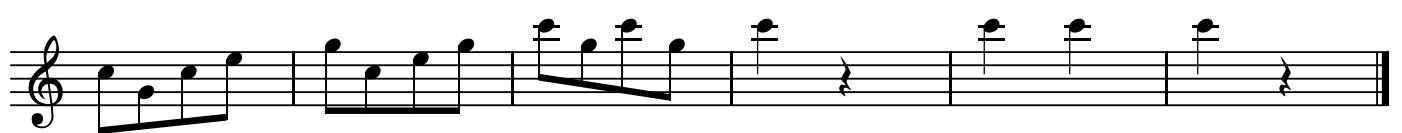
BK=6



BK=7



BK=8



S2

フィガロの結婚  
第22番 終曲ー4 花嫁も花婿も(合唱)

BK=1



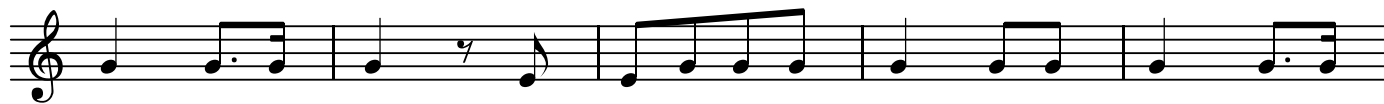
BK=2



BK=3



BK=4



BK=5



BK=6



BK=7



BK=8



第22番 **フィガロの結婚**  
終曲-4 花嫁も花婿も(合唱)

[illegible]

The first staff of music is written on a five-line treble clef. It begins with a series of eighth and sixteenth notes, creating a rhythmic pattern. The notes are: G4 (quarter), A4 (eighth), B4 (eighth), C5 (quarter), D5 (eighth), E5 (eighth), F5 (quarter), G5 (eighth), A5 (eighth), B5 (quarter), C6 (eighth), D6 (eighth), E6 (quarter), F6 (eighth), G6 (eighth), A6 (quarter), B6 (eighth), C7 (eighth), D7 (quarter), E7 (eighth), F7 (eighth), G7 (quarter), A7 (eighth), B7 (eighth), C8 (quarter), D8 (eighth), E8 (eighth), F8 (quarter), G8 (eighth), A8 (eighth), B8 (quarter), C9 (eighth), D9 (eighth), E9 (quarter), F9 (eighth), G9 (eighth), A9 (quarter), B9 (eighth), C10 (eighth), D10 (quarter), E10 (eighth), F10 (eighth), G10 (quarter), A10 (eighth), B10 (eighth), C11 (quarter), D11 (eighth), E11 (eighth), F11 (quarter), G11 (eighth), A11 (eighth), B11 (quarter), C12 (eighth), D12 (eighth), E12 (quarter), F12 (eighth), G12 (eighth), A12 (quarter), B12 (eighth), C13 (eighth), D13 (quarter), E13 (eighth), F13 (eighth), G13 (quarter), A13 (eighth), B13 (eighth), C14 (quarter), D14 (eighth), E14 (eighth), F14 (quarter), G14 (eighth), A14 (eighth), B14 (quarter), C15 (eighth), D15 (eighth), E15 (quarter), F15 (eighth), G15 (eighth), A15 (quarter), B15 (eighth), C16 (eighth), D16 (quarter), E16 (eighth), F16 (eighth), G16 (quarter), A16 (eighth), B16 (eighth), C17 (quarter), D17 (eighth), E17 (eighth), F17 (quarter), G17 (eighth), A17 (eighth), B17 (quarter), C18 (eighth), D18 (eighth), E18 (quarter), F18 (eighth), G18 (eighth), A18 (quarter), B18 (eighth), C19 (eighth), D19 (quarter), E19 (eighth), F19 (eighth), G19 (quarter), A19 (eighth), B19 (eighth), C20 (quarter), D20 (eighth), E20 (eighth), F20 (quarter), G20 (eighth), A20 (eighth), B20 (quarter), C21 (eighth), D21 (eighth), E21 (quarter), F21 (eighth), G21 (eighth), A21 (quarter), B21 (eighth), C22 (eighth), D22 (quarter), E22 (eighth), F22 (eighth), G22 (quarter), A22 (eighth), B22 (eighth), C23 (quarter), D23 (eighth), E23 (eighth), F23 (quarter), G23 (eighth), A23 (eighth), B23 (quarter), C24 (eighth), D24 (eighth), E24 (quarter), F24 (eighth), G24 (eighth), A24 (quarter), B24 (eighth), C25 (eighth), D25 (quarter), E25 (eighth), F25 (eighth), G25 (quarter), A25 (eighth), B25 (eighth), C26 (quarter), D26 (eighth), E26 (eighth), F26 (quarter), G26 (eighth), A26 (eighth), B26 (quarter), C27 (eighth), D27 (eighth), E27 (quarter), F27 (eighth), G27 (eighth), A27 (quarter), B27 (eighth), C28 (eighth), D28 (quarter), E28 (eighth), F28 (eighth), G28 (quarter), A28 (eighth), B28 (eighth), C29 (quarter), D29 (eighth), E29 (eighth), F29 (quarter), G29 (eighth), A29 (eighth), B29 (quarter), C30 (eighth), D30 (eighth), E30 (quarter), F30 (eighth), G30 (eighth), A30 (quarter), B30 (eighth), C31 (eighth), D31 (quarter), E31 (eighth), F31 (eighth), G31 (quarter), A31 (eighth), B31 (eighth), C32 (quarter), D32 (eighth), E32 (eighth), F32 (quarter), G32 (eighth), A32 (eighth), B32 (quarter), C33 (eighth), D33 (eighth), E33 (quarter), F33 (eighth), G33 (eighth), A33 (quarter), B33 (eighth), C34 (eighth), D34 (quarter), E34 (eighth), F34 (eighth), G34 (quarter), A34 (eighth), B34 (eighth), C35 (quarter), D35 (eighth), E35 (eighth), F35 (quarter), G35 (eighth), A35 (eighth), B35 (quarter), C36 (eighth), D36 (eighth), E36 (quarter), F36 (eighth), G36 (eighth), A36 (quarter), B36 (eighth), C37 (eighth), D37 (quarter), E37 (eighth), F37 (eighth), G37 (quarter), A37 (eighth), B37 (eighth), C38 (quarter), D38 (eighth), E38 (eighth), F38 (quarter), G38 (eighth), A38 (eighth), B38 (quarter), C39 (eighth), D39 (eighth), E39 (quarter), F39 (eighth), G39 (eighth), A39 (quarter), B39 (eighth), C40 (eighth), D40 (quarter), E40 (eighth), F40 (eighth), G40 (quarter), A40 (eighth), B40 (eighth), C41 (quarter), D41 (eighth), E41 (eighth), F41 (quarter), G41 (eighth), A41 (eighth), B41 (quarter), C42 (eighth), D42 (eighth), E42 (quarter), F42 (eighth), G42 (eighth), A42 (quarter), B42 (eighth), C43 (eighth), D43 (quarter), E43 (eighth), F43 (eighth), G43 (quarter), A43 (eighth), B43 (eighth), C44 (quarter), D44 (eighth), E44 (eighth), F44 (quarter), G44 (eighth), A44 (eighth), B44 (quarter), C45 (eighth), D45 (eighth), E45 (quarter), F45 (eighth), G45 (eighth), A45 (quarter), B45 (eighth), C46 (eighth), D46 (quarter), E46 (eighth), F46 (eighth), G46 (quarter), A46 (eighth), B46 (eighth), C47 (quarter), D47 (eighth), E47 (eighth), F47 (quarter), G47 (eighth), A47 (eighth), B47 (quarter), C48 (eighth), D48 (eighth), E48 (quarter), F48 (eighth), G48 (eighth), A48 (quarter), B48 (eighth), C49 (eighth), D49 (quarter), E49 (eighth), F49 (eighth), G49 (quarter), A49 (eighth), B49 (eighth), C50 (quarter), D50 (eighth), E50 (eighth), F50 (quarter), G50 (eighth), A50 (eighth), B50 (quarter), C51 (eighth), D51 (eighth), E51 (quarter), F51 (eighth), G51 (eighth), A51 (quarter), B51 (eighth), C52 (eighth), D52 (quarter), E52 (eighth), F52 (eighth), G52 (quarter), A52 (eighth), B52 (eighth), C53 (quarter), D53 (eighth), E53 (eighth), F53 (quarter), G53 (eighth), A53 (eighth), B53 (quarter), C54 (eighth), D54 (eighth), E54 (quarter), F54 (eighth), G54 (eighth), A54 (quarter), B54 (eighth), C55 (eighth), D55 (quarter), E55 (eighth), F55 (eighth), G55 (quarter), A55 (eighth), B55 (eighth), C56 (quarter), D56 (eighth), E56 (eighth), F56 (quarter), G56 (eighth), A56 (eighth), B56 (quarter), C57 (eighth), D57 (eighth), E57 (quarter), F57 (eighth), G57 (eighth), A57 (quarter), B57 (eighth), C58 (eighth), D58 (quarter), E58 (eighth), F58 (eighth), G58 (quarter), A58 (eighth), B58 (eighth), C59 (quarter), D59 (eighth), E59 (eighth), F59 (quarter), G59 (eighth), A59 (eighth), B59 (quarter), C60 (eighth), D60 (eighth), E60 (quarter), F60 (eighth), G60 (eighth), A60 (quarter), B60 (eighth), C61 (eighth), D61 (quarter), E61 (eighth), F61 (eighth), G61 (quarter), A61 (eighth), B61 (eighth), C62 (quarter), D62 (eighth), E62 (eighth), F62 (quarter), G62 (eighth), A62 (eighth), B62 (quarter), C63 (eighth), D63 (eighth), E63 (quarter), F63 (eighth), G63 (eighth), A63 (quarter), B63 (eighth), C64 (eighth), D64 (quarter), E64 (eighth), F64 (eighth), G64 (quarter), A64 (eighth), B64 (eighth), C65 (quarter), D65 (eighth), E65 (eighth), F65 (quarter), G65 (eighth), A65 (eighth), B65 (quarter), C66 (eighth), D66 (eighth), E66 (quarter), F66 (eighth), G66 (eighth), A66 (quarter), B66 (eighth), C67 (eighth), D67 (quarter), E67 (eighth), F67 (eighth), G67 (quarter), A67 (eighth), B67 (eighth), C68 (quarter), D68 (eighth), E68 (eighth), F68 (quarter), G68 (eighth), A68 (eighth), B68 (quarter), C69 (eighth), D69 (eighth), E69 (quarter), F69 (eighth), G69 (eighth), A69 (quarter), B69 (eighth), C70 (eighth), D70 (quarter), E70 (eighth), F70 (eighth), G70 (quarter), A70 (eighth), B70 (eighth), C71 (quarter), D71 (eighth), E71 (eighth), F71 (quarter), G71 (eighth), A71 (eighth), B71 (quarter), C72 (eighth), D72 (eighth), E72 (quarter), F72 (eighth), G72 (eighth), A72 (quarter), B72 (eighth), C73 (eighth), D73 (quarter), E73 (eighth), F73 (eighth), G73 (quarter), A73 (eighth), B73 (eighth), C74 (quarter), D74 (eighth), E74 (eighth), F74 (quarter), G74 (eighth), A74 (eighth), B74 (quarter), C75 (eighth), D75 (eighth), E75 (quarter), F75 (eighth), G75 (eighth), A75 (quarter), B75 (eighth), C76 (eighth), D76 (quarter), E76 (eighth), F76 (eighth), G76 (quarter), A76 (eighth), B76 (eighth), C77 (quarter), D77 (eighth), E77 (eighth), F77 (quarter), G77 (eighth), A77 (eighth), B77 (quarter), C78 (eighth), D78 (eighth), E78 (quarter), F78 (eighth), G78 (eighth), A78 (quarter), B78 (eighth), C79 (eighth), D79 (quarter), E79 (eighth), F79 (eighth), G79 (quarter), A79 (eighth), B79 (eighth), C80 (quarter), D80 (eighth), E80 (eighth), F80 (quarter), G80 (eighth), A80 (eighth), B80 (quarter), C81 (eighth), D81 (eighth), E81 (quarter), F81 (eighth), G81 (eighth), A81 (quarter), B81 (eighth), C82 (eighth), D82 (quarter), E82 (eighth), F82 (eighth), G82 (quarter), A82 (eighth), B82 (eighth), C83 (quarter), D83 (eighth), E83 (eighth), F83 (quarter), G83 (eighth), A83 (eighth), B83 (quarter), C84 (eighth), D84 (eighth), E84 (quarter), F84 (eighth), G84 (eighth), A84 (quarter), B84 (eighth), C85 (eighth), D85 (quarter), E85 (eighth), F85 (eighth), G85 (quarter), A85 (eighth), B85 (eighth), C86 (quarter), D86 (eighth), E86 (eighth), F86 (quarter), G86 (eighth), A86 (eighth), B86 (quarter), C87 (eighth), D87 (eighth), E87 (quarter), F87 (eighth), G87 (eighth), A87 (quarter), B87 (eighth), C88 (eighth), D88 (quarter), E88 (eighth), F88 (eighth), G88 (quarter), A88 (eighth), B88 (eighth), C89 (quarter), D89 (eighth), E89 (eighth), F89 (quarter), G89 (eighth), A89 (eighth), B89 (quarter), C90 (eighth), D90 (eighth), E90 (quarter), F90 (eighth), G90 (eighth), A90 (quarter), B90 (eighth), C91 (eighth), D91 (quarter), E91 (eighth), F91 (eighth), G91

The first staff of music is written on a single five-line staff with a treble clef. It contains a sequence of notes: a quarter note, followed by two eighth notes beamed together, then another quarter note, followed by two eighth notes beamed together, and finally a quarter note. This pattern repeats, with some notes having accidentals (sharps or flats) and some being tied across bar lines. The notation includes various rhythmic values and articulation marks.

T

フィガロの結婚  
第22番 終曲ー4 花嫁も花婿も(合唱)

BK=1



BK=2



BK=3



BK=4



BK=5



BK=6



BK=7



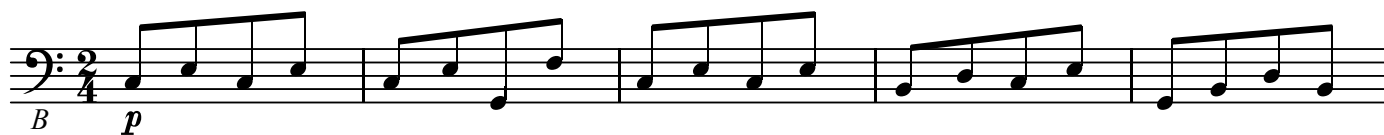
BK=8



B

フィガロの結婚  
第22番 終曲ー4 花嫁も花婿も(合唱)

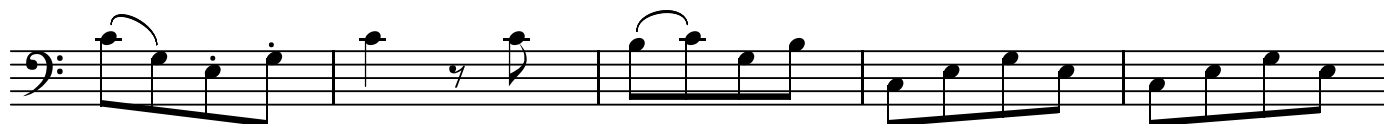
BK=1



BK=2



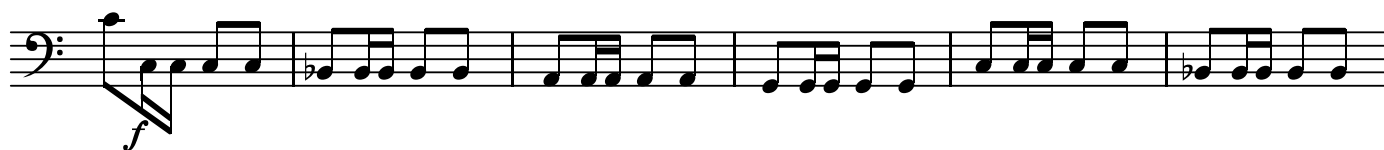
BK=3



BK=4



BK=5



BK=6



BK=7



BK=8

