

フィガロの結婚
第22番 終曲-3 や！指をピンがさした

BK=1 Moderato



BK=2



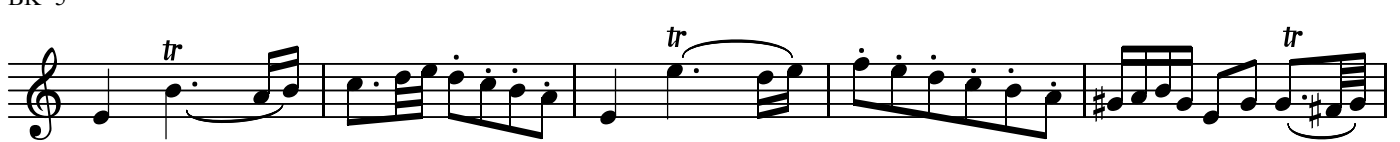
BK=3



BK=4



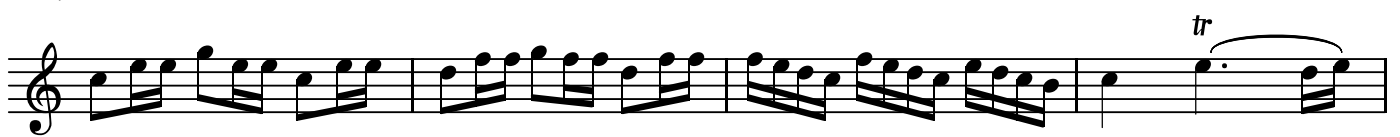
BK=5



BK=6



BK=7



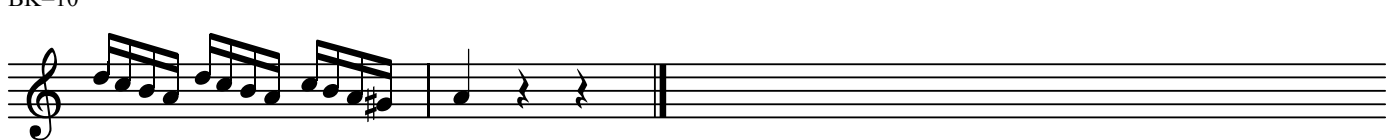
BK=8



BK=9



BK=10



フィガロの結婚
第22番 終曲-3 や！指をピンがさした

BK=1

Musical staff BK=1, starting with a treble clef and a 3/4 time signature. The first measure contains a whole rest. The second measure begins with a piano (*p*) dynamic marking and a half note G4. The staff continues with eighth and sixteenth notes, including a triplet of eighth notes in the second measure. The piece concludes with a half note G4 and a quarter rest.

BK=2

Musical staff BK=2, continuing the melody from the previous staff. It features a series of eighth notes, a quarter note, and a half note, ending with a quarter rest.

BK=3

Musical staff BK=3, featuring a melodic line with eighth notes, a quarter note, and a half note. It includes a slur over a group of notes and ends with a quarter rest.

BK=4

Musical staff BK=4, continuing the melodic line with eighth notes and a quarter note. It ends with a quarter rest.

BK=5

Musical staff BK=5, featuring a melodic line with eighth notes and a quarter note. It ends with a quarter rest.

BK=6

Musical staff BK=6, featuring a melodic line with eighth notes and a quarter note. It ends with a quarter rest.

BK=7

Musical staff BK=7, featuring a melodic line with eighth notes and a quarter note. It includes a slur over a group of notes and ends with a quarter rest.

BK=8

Musical staff BK=8, featuring a melodic line with eighth notes and a quarter note. It includes a slur over a group of notes and ends with a quarter rest.

BK=9

Musical staff BK=9, featuring a melodic line with eighth notes and a quarter note. It ends with a quarter rest.

BK=10

Musical staff BK=10, featuring a melodic line with eighth notes and a quarter note. It ends with a quarter rest.

T

フィガロの結婚
第22番 終曲-3 や!指をピンがさした

BK=1



Musical notation for BK=1, starting with a treble clef, a 3/4 time signature, and a key signature of one sharp (F#). The notation includes a dynamic marking *p* and a fermata over the first measure.

BK=2



Musical notation for BK=2, continuing the melody from BK=1.

BK=3



Musical notation for BK=3, continuing the melody from BK=2.

BK=4



Musical notation for BK=4, continuing the melody from BK=3.

BK=5



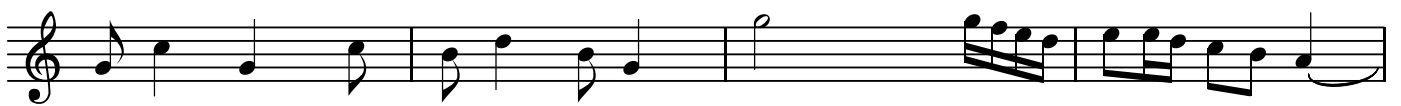
Musical notation for BK=5, continuing the melody from BK=4.

BK=6



Musical notation for BK=6, continuing the melody from BK=5.

BK=7



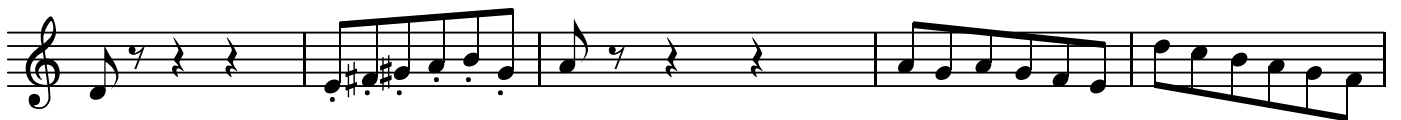
Musical notation for BK=7, continuing the melody from BK=6.

BK=8



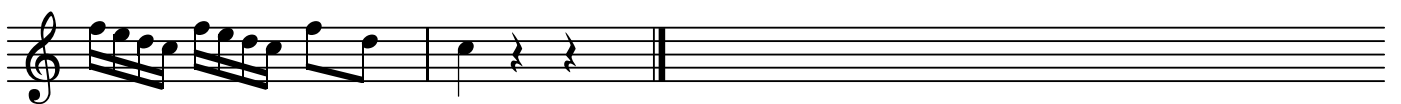
Musical notation for BK=8, continuing the melody from BK=7.

BK=9



Musical notation for BK=9, continuing the melody from BK=8.

BK=10



Musical notation for BK=10, concluding the piece with a double bar line.

B

フィガロの結婚
第22番 終曲-3 や!指をピンがさした

BK=1



Musical notation for BK=1, starting with a bass clef, a 3/4 time signature, and a key signature of one sharp (F#). The notation includes a dynamic marking of *p* (piano) and a *B* (Basso continuo) marking. The first measure contains a whole rest, followed by a series of eighth and sixteenth notes.

BK=2



Musical notation for BK=2, continuing the bass line with eighth and sixteenth notes.

BK=3



Musical notation for BK=3, continuing the bass line with eighth and sixteenth notes.

BK=4



Musical notation for BK=4, continuing the bass line with eighth and sixteenth notes.

BK=5



Musical notation for BK=5, continuing the bass line with eighth and sixteenth notes.

BK=6



Musical notation for BK=6, continuing the bass line with eighth and sixteenth notes.

BK=7



Musical notation for BK=7, continuing the bass line with eighth and sixteenth notes.

BK=8



Musical notation for BK=8, continuing the bass line with eighth and sixteenth notes.

BK=9



Musical notation for BK=9, continuing the bass line with eighth and sixteenth notes.

BK=10



Musical notation for BK=10, concluding the piece with a final bass line and a double bar line.