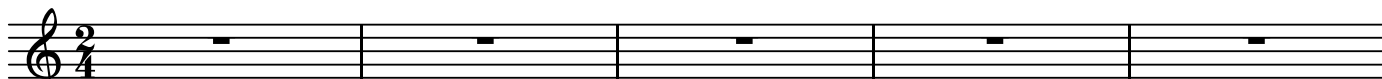


S1

第22番 終曲-2 フィガロの結婚
花嫁も花婿も(二人の少女の二重唱)

BK=1 Allegretto



S1

BK=2



BK=3



BK=4



BK=5



BK=6



BK=7



BK=8



BK=9



BK=10



BK=11



BK=12



BK=13



BK=14

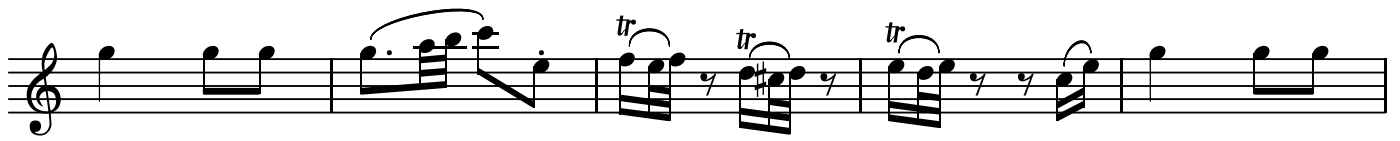


フィガロの結婚
第22番 終曲-2 花嫁も花婿も(二人の少女の二重唱)

BK=1



BK=2



BK=3



BK=4



BK=5



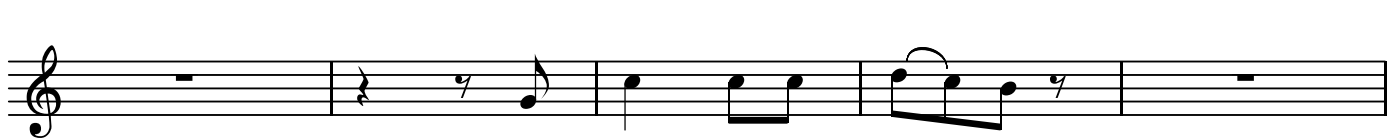
BK=6



BK=7



BK=8



BK=9



BK=10



BK=11



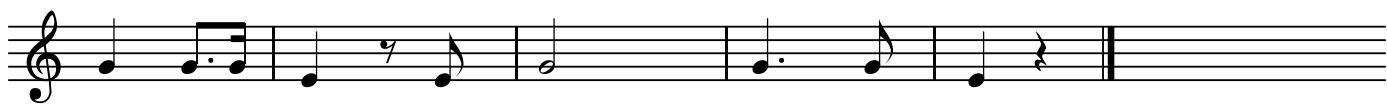
BK=12



BK=13



BK=14



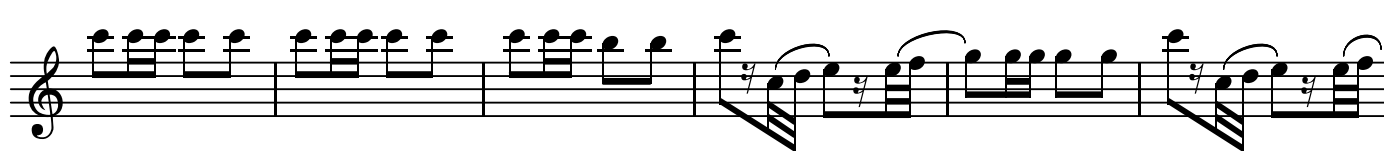
BK=11



BK=12



BK=13



BK=14



T

第22番 終曲-2 花嫁も花婿も(二人の少女の二重唱)

フィガロの結婚

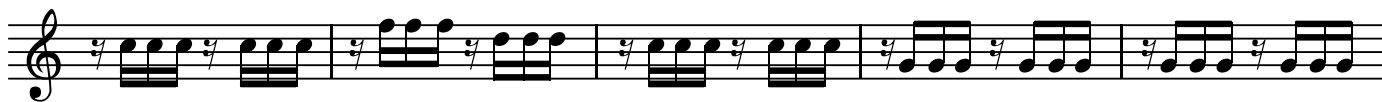
BK=1



BK=2



BK=3



BK=4



BK=5



BK=6



BK=7



BK=8



BK=9



BK=10



BK=11



BK=12



BK=13



BK=14

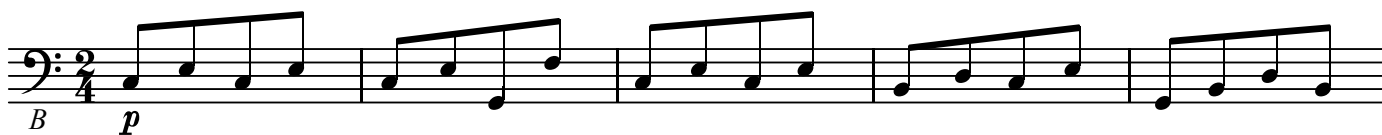


B

第22番 終曲-2 花嫁も花婿も(二人の少女の二重唱)

フィガロの結婚

BK=1



Musical notation for BK=1, starting with a bass clef, 2/4 time signature, and a piano (*p*) dynamic marking. The notation consists of a single staff with five measures of music.

BK=2



Musical notation for BK=2, continuing the bass line with five measures of music.

BK=3



Musical notation for BK=3, continuing the bass line with five measures of music.

BK=4



Musical notation for BK=4, continuing the bass line with five measures of music.

BK=5



Musical notation for BK=5, continuing the bass line with five measures of music, including a key signature change to one sharp (F#).

BK=6



Musical notation for BK=6, continuing the bass line with five measures of music.

BK=7



Musical notation for BK=7, continuing the bass line with five measures of music.

BK=8



Musical notation for BK=8, continuing the bass line with five measures of music.

BK=9



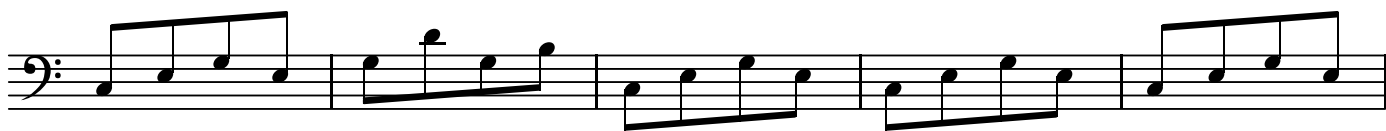
Musical notation for BK=9, continuing the bass line with five measures of music, including a fermata over the final note.

BK=10



Musical notation for BK=10, continuing the bass line with five measures of music.

BK=11



BK=12



BK=13



BK=14

