

Sn

フィガロの結婚
第22番 終曲-1 さあマーチだ

BK=1 *alla marcia*

Musical staff BK=1, starting with a treble clef, common time signature, and a dynamic marking of *p*. The notation includes quarter notes, eighth notes, and sixteenth notes.

Musical staff BK=2, featuring a trill (*tr*) and a dynamic marking of *p*. The notation includes quarter notes, eighth notes, and sixteenth notes.

Musical staff BK=3, featuring a trill (*tr*) and a dynamic marking of *p*. The notation includes quarter notes, eighth notes, and sixteenth notes.

Musical staff BK=4, featuring a trill (*tr*) and a dynamic marking of *p*. The notation includes quarter notes, eighth notes, and sixteenth notes.

Musical staff BK=5, featuring trills (*tr*) and a dynamic marking of *cresc.*. The notation includes quarter notes, eighth notes, and sixteenth notes.

Musical staff BK=6, featuring trills (*tr*) and a dynamic marking of *f*. The notation includes quarter notes, eighth notes, and sixteenth notes.

Musical staff BK=7, featuring a trill (*tr*) and a dynamic marking of *f*. The notation includes quarter notes, eighth notes, and sixteenth notes.

Musical staff BK=8, featuring trills (*tr*) and a dynamic marking of *f*. The notation includes quarter notes, eighth notes, and sixteenth notes.

Musical staff BK=9, featuring a trill (*tr*) and a dynamic marking of *f*. The notation includes quarter notes, eighth notes, and sixteenth notes.

Musical staff BK=10, featuring a trill (*tr*) and a dynamic marking of *f*. The notation includes quarter notes, eighth notes, and sixteenth notes.

フィガロの結婚
第22番 終曲-1 さあマーチだ

BK=1



S
BK=2



BK=3



BK=4



BK=5



BK=6



BK=7



BK=8



BK=9



BK=10



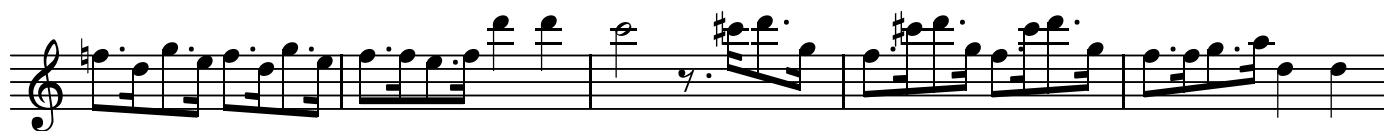
BK=11



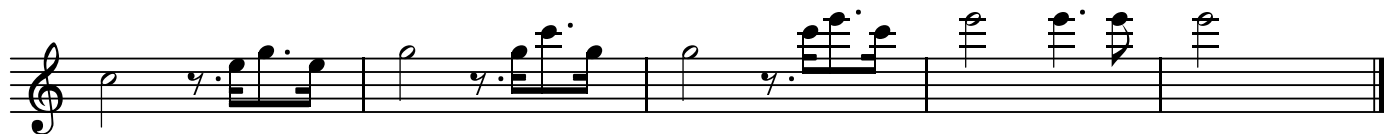
BK=12



BK=11



BK=12



T

フィガロの結婚
第22番 終曲-1 さあマーチだ

BK=1



BK=2



BK=3



BK=4



BK=5



BK=6



BK=7



BK=8



BK=9



BK=10



BK=11



BK=12



GB

フィガロの結婚
第22番 終曲-1 さあマーチだ

BK=1

Musical staff for BK=1, starting with a bass clef, common time signature, and a dynamic marking of *p*. The staff contains a sequence of notes and rests.

BK=2

Musical staff for BK=2, continuing the sequence of notes and rests.

BK=3

Musical staff for BK=3, continuing the sequence of notes and rests.

BK=4

Musical staff for BK=4, continuing the sequence of notes and rests.

BK=5

Musical staff for BK=5, including a dynamic marking of *cresc.*

BK=6

Musical staff for BK=6, including a dynamic marking of *f*.

BK=7

Musical staff for BK=7, continuing the sequence of notes and rests.

BK=8

Musical staff for BK=8, continuing the sequence of notes and rests.

BK=9

Musical staff for BK=9, continuing the sequence of notes and rests.

BK=10

Musical staff for BK=10, continuing the sequence of notes and rests.

BK=11



BK=12

