

フィガロの結婚
第20番 さあどうぞ(手紙の二重唱)

BK=1 Allegretto

Musical staff BK=1, starting with a treble clef, a 6/8 time signature, and a dynamic marking of *sf*. The staff contains six measures of music, including rests and various rhythmic patterns.

BK=2

Musical staff BK=2, continuing the piece with six measures of music.

BK=3

Musical staff BK=3, continuing the piece with six measures of music.

BK=4

Musical staff BK=4, continuing the piece with six measures of music.

BK=5

Musical staff BK=5, continuing the piece with six measures of music.

BK=6

Musical staff BK=6, continuing the piece with six measures of music.

BK=7

Musical staff BK=7, continuing the piece with six measures of music.

BK=8

Musical staff BK=8, continuing the piece with six measures of music.

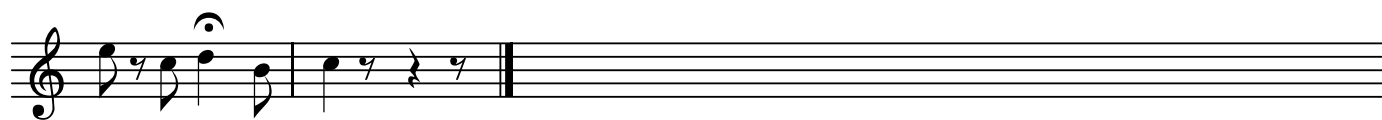
BK=9

Musical staff BK=9, continuing the piece with six measures of music, featuring a more complex rhythmic pattern in the first measure.

BK=10

Musical staff BK=10, continuing the piece with six measures of music.

BK=11



フィガロの結婚
第20番 さあどうぞ(手紙の二重唱)

BK=1



BK=2



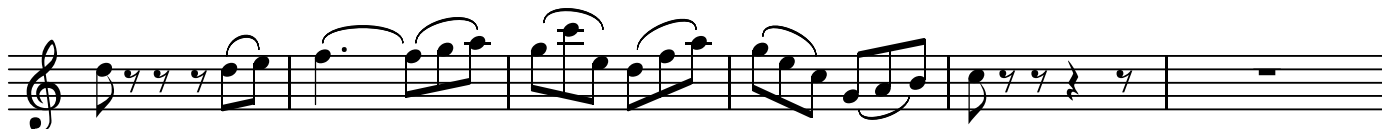
BK=3



BK=4



BK=5



BK=6



BK=7



BK=8



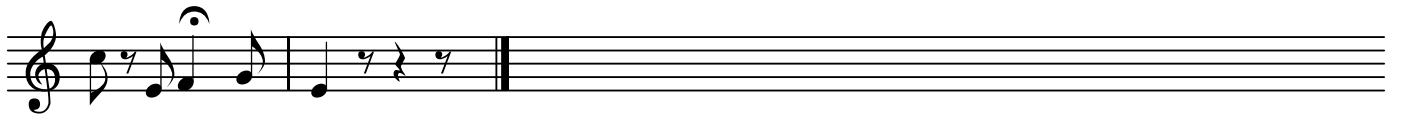
BK=9



BK=10



BK=11



A

フィガロの結婚
第20番 さあどうぞ(手紙の二重唱)

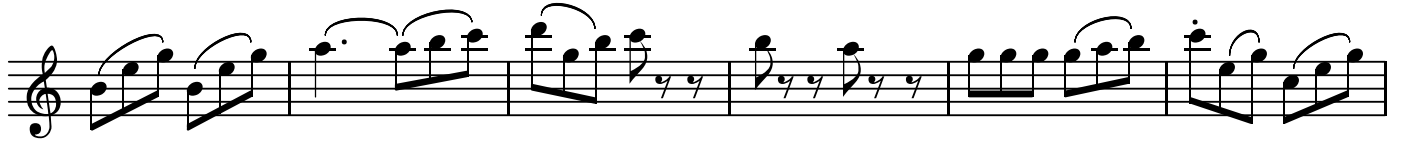
BK=1



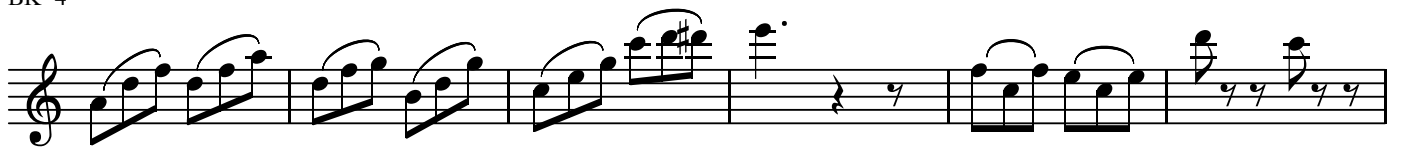
BK=2



BK=3



BK=4



BK=5



BK=6



BK=7



BK=8



BK=9



BK=10



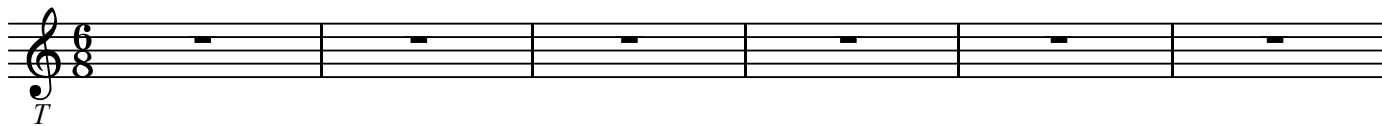
BK=11



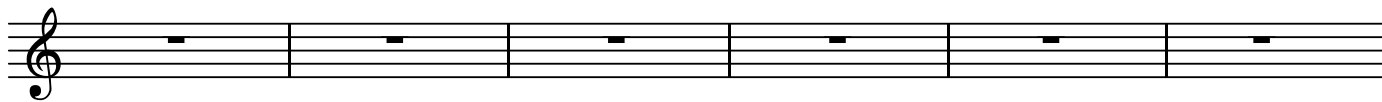
T

フィガロの結婚
第20番 さあどうぞ(手紙の二重唱)

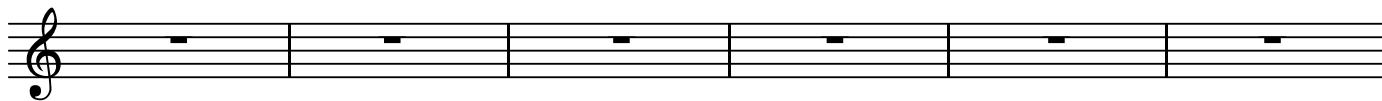
BK=1



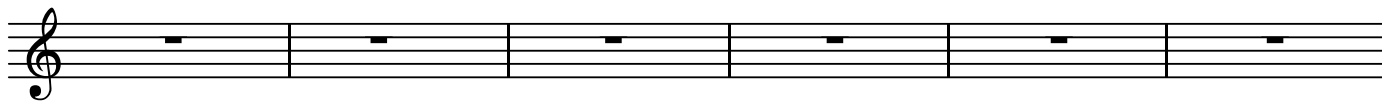
BK=2



BK=3



BK=4



BK=5



BK=6



BK=7



BK=8



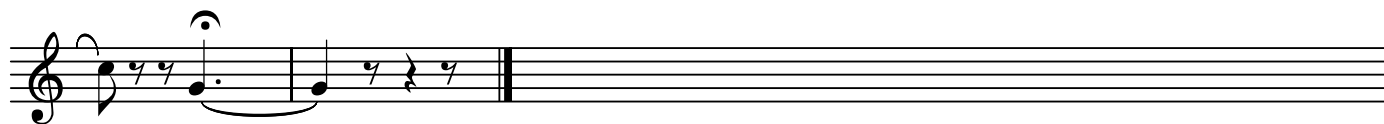
BK=9



BK=10



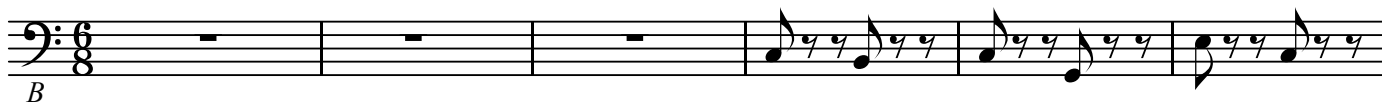
BK=11



B

フィガロの結婚
第20番 さあどうぞ(手紙の二重唱)

BK=1



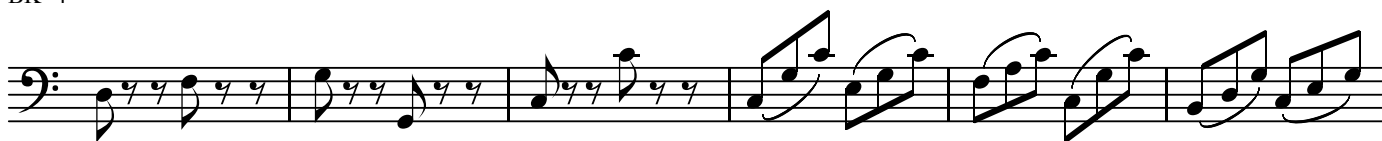
BK=2



BK=3



BK=4



BK=5



BK=6



BK=7



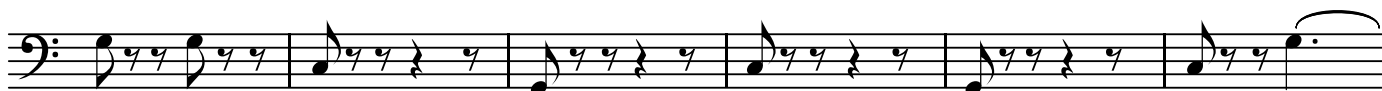
BK=8



BK=9



BK=10



BK=11

