

S

フィガロの結婚  
第19番 楽しい思い出はどこへ

BK=1

Andante



BK=2



BK=3



BK=4



BK=5



BK=6



BK=7



BK=8



BK=9

Allegro



BK=10



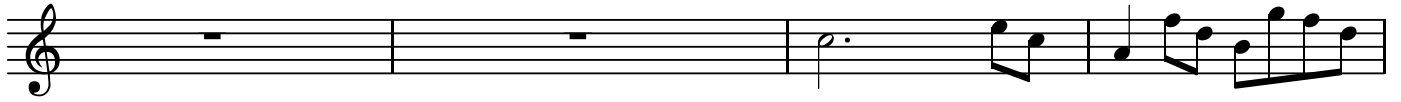
BK=11



BK=12



BK=13



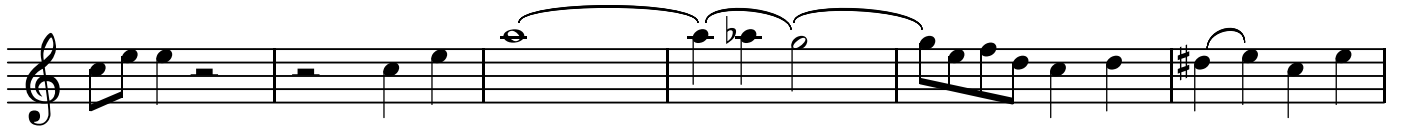
BK=14



BK=15



BK=16



BK=17



BK=18



BK=19



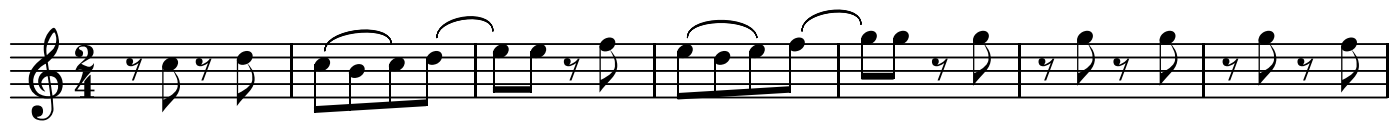
BK=20



A1

フィガロの結婚  
第19番 楽しい思い出はどこへ

BK=1



A1  
BK=2



BK=3



BK=4



BK=5



BK=6



BK=7



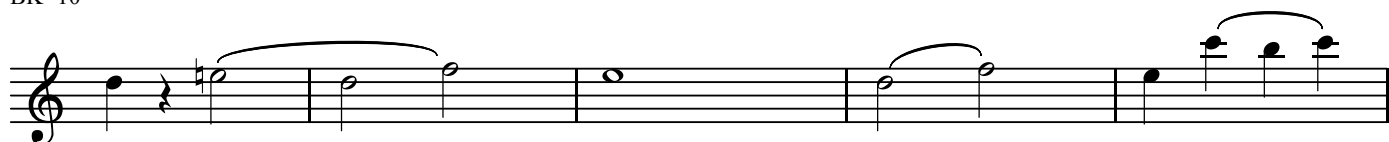
BK=8



BK=9



BK=10





A2

フィガロの結婚  
第19番 楽しい思い出はどこへ

BK=1



A2  
BK=2



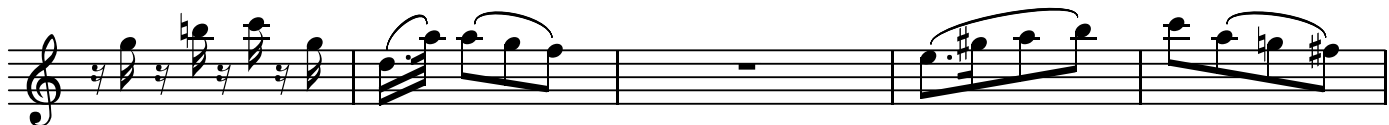
BK=3



BK=4



BK=5



BK=6



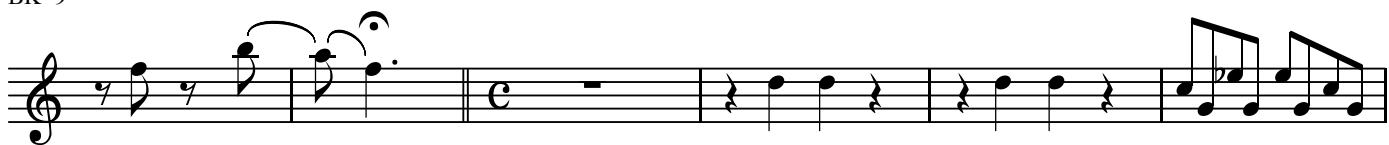
BK=7



BK=8



BK=9



BK=10







BK=11



BK=12



BK=13



BK=14



BK=15



BK=16



BK=17



BK=18



BK=19



BK=20





B

フィガロの結婚  
第19番 楽しい思い出はどこへ

BK=1



Musical notation for BK=1, starting with a bass clef and a 2/4 time signature. The piece begins with a dynamic marking of *B* (Basso).

BK=2




Musical notation for BK=2, continuing the bass line with various eighth and sixteenth notes.

BK=3



Musical notation for BK=3, featuring a melodic line with eighth notes and a triplet of eighth notes.

BK=4



Musical notation for BK=4, including a dynamic marking of *fp* (forzando) and a sharp sign (*b*) on a note.

BK=5



Musical notation for BK=5, showing a melodic line with eighth notes and a triplet.

BK=6



Musical notation for BK=6, featuring a melodic line with eighth notes and a triplet.

BK=7



Musical notation for BK=7, continuing the melodic line with eighth notes and a triplet.

BK=8



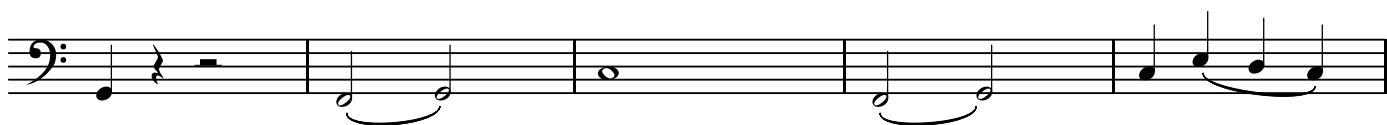
Musical notation for BK=8, featuring a melodic line with eighth notes and a triplet.

BK=9



Musical notation for BK=9, including a dynamic marking of *c* (crescendo) and a common time signature.

BK=10



Musical notation for BK=10, featuring a melodic line with eighth notes and a triplet.

BK=11

Musical notation for BK=11, bass clef, 4/4 time. The first measure contains a half note G2. The second measure contains eighth notes G2, A2, B2, C3. The third measure contains eighth notes D3, E3, F3, G3. The fourth measure contains a half note G3. A dynamic marking of *f* is placed below the third measure.

BK=12

Musical notation for BK=12, bass clef, 4/4 time. The first measure is a whole rest. The second measure contains eighth notes G2, A2, B2, C3. The third measure contains eighth notes D3, E3, F3, G3. The fourth measure contains eighth notes A3, B3, C4, D4. Dynamic markings of *p* and *f* are placed below the second and fourth measures respectively.

BK=13

Musical notation for BK=13, bass clef, 4/4 time. The first and second measures are whole rests. The third measure contains eighth notes G2, A2, B2, C3. The fourth measure contains eighth notes D3, E3, F3, G3. A dynamic marking of *p* is placed below the third measure.

BK=14

Musical notation for BK=14, bass clef, 4/4 time. The first measure contains a half note G2. The second measure contains a half note A2. The third measure contains a half note B2. The fourth measure contains a half note C3. The fifth measure contains a half note D3. The sixth measure contains a half note E3.

BK=15

Musical notation for BK=15, bass clef, 4/4 time. The first measure contains a half note G2. The second measure contains a half note A2. The third measure contains a half note B2. The fourth measure contains a half note C3. The fifth measure contains a half note D3. The sixth measure contains a half note E3.

BK=16

Musical notation for BK=16, bass clef, 4/4 time. The first measure contains eighth notes G2, A2, B2, C3. The second measure contains eighth notes D3, E3, F3, G3. The third measure contains eighth notes A3, B3, C4, D4. The fourth measure contains eighth notes E4, F4, G4, A4. The fifth measure contains eighth notes B4, C5, D5, E5. The sixth measure contains eighth notes F5, G5, A5, B5.

BK=17

Musical notation for BK=17, bass clef, 4/4 time. The first measure contains eighth notes G2, A2, B2, C3. The second measure contains eighth notes D3, E3, F3, G3. The third measure contains eighth notes A3, B3, C4, D4. The fourth measure contains eighth notes E4, F4, G4, A4. The fifth measure contains eighth notes B4, C5, D5, E5. The sixth measure contains eighth notes F5, G5, A5, B5.

BK=18

Musical notation for BK=18, bass clef, 4/4 time. The first measure contains a half note G2. The second measure contains a half note A2. The third measure contains a half note B2. The fourth measure contains a half note C3. The fifth measure contains a half note D3. The sixth measure contains a half note E3. The seventh measure contains eighth notes F3, G3, A3, B3. The eighth measure contains eighth notes C4, D4, E4, F4. Dynamic markings of *fp* are placed above the seventh and eighth measures.

BK=19

Musical notation for BK=19, bass clef, 4/4 time. The first measure contains eighth notes G2, A2, B2, C3. The second measure contains eighth notes D3, E3, F3, G3. The third measure contains eighth notes A3, B3, C4, D4. The fourth measure contains eighth notes E4, F4, G4, A4. The fifth measure contains eighth notes B4, C5, D5, E5. The sixth measure contains eighth notes F5, G5, A5, B5. Dynamic markings of *fp*, *cresc.*, and *f* are placed below the first, third, and fifth measures respectively.

BK=20

Musical notation for BK=20, bass clef, 4/4 time. The first measure contains eighth notes G2, A2, B2, C3. The second measure contains eighth notes D3, E3, F3, G3. The third measure contains eighth notes A3, B3, C4, D4. The fourth measure contains eighth notes E4, F4, G4, A4. The fifth measure contains eighth notes B4, C5, D5, E5. The sixth measure contains eighth notes F5, G5, A5, B5. The seventh measure contains eighth notes C6, D6, E6, F6. The eighth measure contains eighth notes G6, A6, B6, C7. A dynamic marking of *f* is placed below the third measure. A triplet marking of 3 is placed above the eighth measure.