

第10番 フィガロの結婚
愛の神よ、照覧あれ

BK=1 Adagio

Musical staff BK=1, starting with a treble clef, a key signature of one flat (B-flat), and a 2/4 time signature. The music begins with a dynamic marking of *f* (forte). The notation includes quarter notes, eighth notes, and a half note, with some notes beamed together.

BK=2

Musical staff BK=2, continuing the melody from BK=1. It features a treble clef, a key signature of one flat, and a 2/4 time signature. The notation includes a series of eighth notes and quarter notes.

BK=3

Musical staff BK=3, showing a treble clef, a key signature of one flat, and a 2/4 time signature. The staff contains several whole rests, indicating a pause in the melody.

BK=4

Musical staff BK=4, continuing the melody with a treble clef, a key signature of one flat, and a 2/4 time signature. The notation includes quarter notes and eighth notes.

BK=5

Musical staff BK=5, featuring a treble clef, a key signature of one flat, and a 2/4 time signature. The notation includes quarter notes, eighth notes, and a half note.

BK=6

Musical staff BK=6, continuing the melody with a treble clef, a key signature of one flat, and a 2/4 time signature. The notation includes quarter notes and eighth notes.

BK=7

Musical staff BK=7, featuring a treble clef, a key signature of one flat, and a 2/4 time signature. The notation includes quarter notes and eighth notes.

BK=8

Musical staff BK=8, starting with a treble clef, a key signature of one flat, and a 2/4 time signature. The notation includes a dynamic marking of *f p* (fortissimo piano). The staff contains a complex passage with many sixteenth notes and eighth notes.

BK=9

Musical staff BK=9, continuing the melody with a treble clef, a key signature of one flat, and a 2/4 time signature. The notation includes quarter notes and eighth notes.

BK=10

Musical staff BK=10, concluding the piece with a treble clef, a key signature of one flat, and a 2/4 time signature. The notation includes quarter notes and eighth notes, ending with a double bar line.

A1

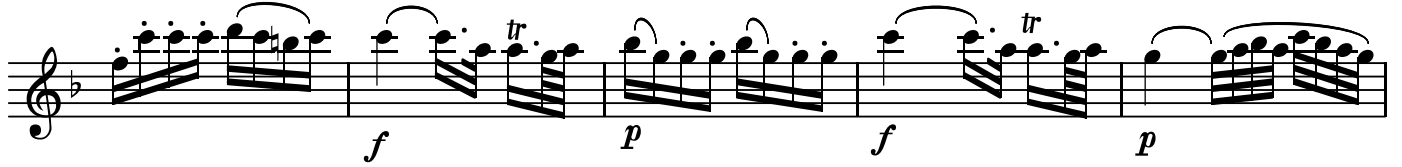
フィガロの結婚
第10番 愛の神よ、照覧あれ

BK=1



Musical notation for BK=1, starting with a treble clef, a key signature of one flat (B-flat), and a 2/4 time signature. The music begins with a forte (*f*) dynamic. The notation includes eighth and sixteenth notes, some with slurs and accents.

BK=2



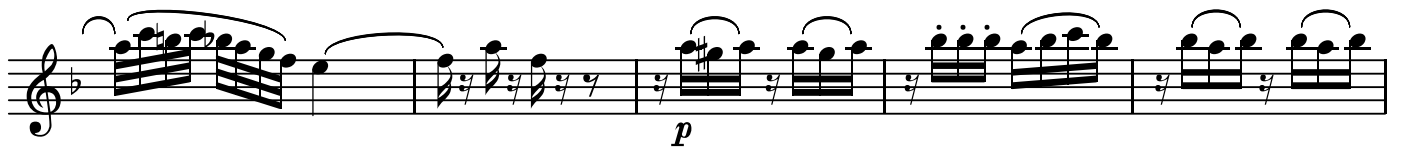
Musical notation for BK=2, continuing the piece. It features a variety of dynamics including forte (*f*) and piano (*p*), and includes trills (*tr*) and slurs.

BK=3



Musical notation for BK=3, featuring a forte (*f*) dynamic and trills (*tr*) over a melodic line.

BK=4



Musical notation for BK=4, featuring a piano (*p*) dynamic and complex rhythmic patterns.

BK=5



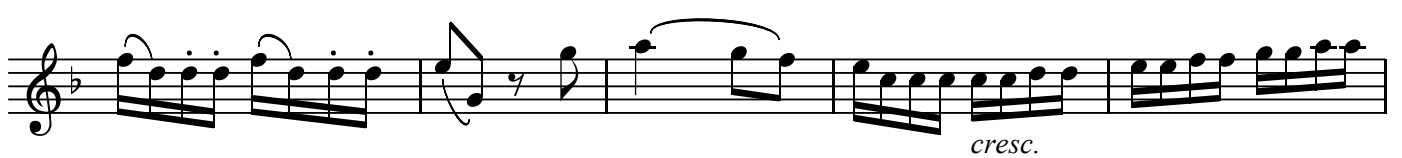
Musical notation for BK=5, featuring a piano (*p*) dynamic and a melodic line with slurs.

BK=6



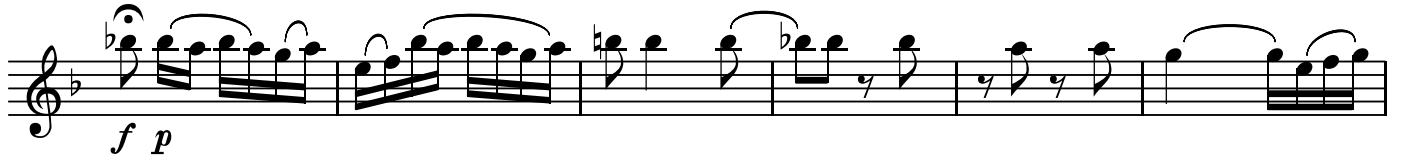
Musical notation for BK=6, featuring a piano (*p*) dynamic and a melodic line with slurs.

BK=7




Musical notation for BK=7, featuring a piano (*p*) dynamic and a melodic line with slurs, ending with a *cresc.* marking.

BK=8



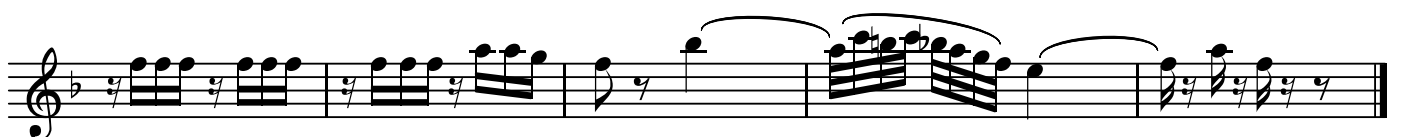
Musical notation for BK=8, featuring a forte (*f*) and piano (*p*) dynamic and a melodic line with slurs.

BK=9



Musical notation for BK=9, featuring a piano (*p*) dynamic and a melodic line with slurs.

BK=10



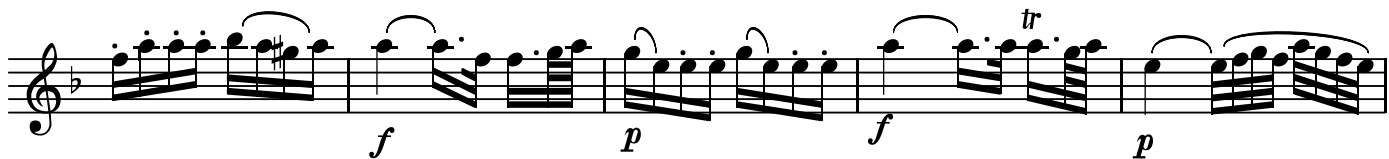
Musical notation for BK=10, featuring a piano (*p*) dynamic and a melodic line with slurs, ending with a double bar line.

フィガロの結婚
第10番 愛の神よ、照覧あれ

BK=1



BK=2



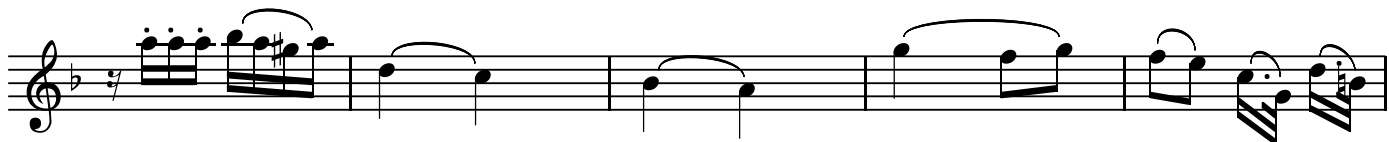
BK=3



BK=4



BK=5



BK=6



BK=7



BK=8



BK=9



BK=10



T

フィガロの結婚
第10番 愛の神よ、照覧あれ

BK=1



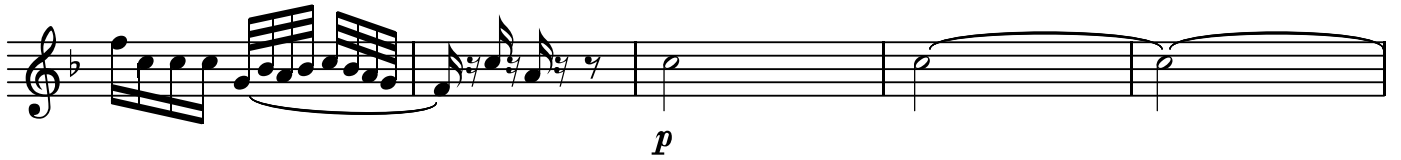
BK=2



BK=3



BK=4



BK=5



BK=6



BK=7



BK=8



BK=9



BK=10



