

BK=1 Andante



BK=2



BK=3



BK=4



BK=5



BK=6



BK=7



BK=8



BK=9



BK=1



Musical notation for BK=1, starting with a treble clef, a key signature of one sharp (F#), and a 2/4 time signature. The melody begins with a quarter note G4, followed by eighth notes A4, B4, and C5, then a quarter rest, a half note D5, a quarter rest, eighth notes E5 and F5, a quarter rest, eighth notes G5 and A5, and ends with a quarter note B5.

BK=2



Musical notation for BK=2, continuing the melody with eighth notes B5 and C6, a quarter rest, eighth notes D6 and E6, a quarter rest, eighth notes F6 and G6, a quarter rest, eighth notes A6 and B6, a quarter rest, eighth notes C7 and D7, and ends with a half note E7.

BK=3



Musical notation for BK=3, continuing the melody with a half note F7, a quarter rest, a half note G7, a quarter rest, a half note A7, a quarter rest, a half note B7, a quarter rest, eighth notes C8 and D8, a quarter rest, eighth notes E8 and F8, and ends with a quarter note G8.

BK=4



Musical notation for BK=4, continuing the melody with a quarter note A8, a quarter rest, eighth notes B8 and C9, a quarter rest, eighth notes D9 and E9, a quarter rest, eighth notes F9 and G9, a quarter rest, eighth notes A9 and B9, a quarter rest, eighth notes C10 and D10, and ends with a quarter note E10.

BK=5



Musical notation for BK=5, continuing the melody with eighth notes F10 and G10, a quarter rest, eighth notes A10 and B10, a quarter rest, eighth notes C11 and D11, a quarter rest, eighth notes E11 and F11, a quarter rest, eighth notes G11 and A11, a quarter rest, eighth notes B11 and C12, and ends with a quarter note D12.

BK=6



Musical notation for BK=6, continuing the melody with eighth notes E12 and F12, a quarter rest, eighth notes G12 and A12, a quarter rest, eighth notes B12 and C13, a quarter rest, eighth notes D13 and E13, a quarter rest, eighth notes F13 and G13, a quarter rest, eighth notes A13 and B13, a quarter rest, eighth notes C14 and D14, and ends with a quarter note E14.

BK=7




Musical notation for BK=7, continuing the melody with eighth notes F14 and G14, a quarter rest, eighth notes A14 and B14, a quarter rest, eighth notes C15 and D15, a quarter rest, eighth notes E15 and F15, a quarter rest, eighth notes G15 and A15, a quarter rest, eighth notes B15 and C16, and ends with a quarter note D16.

BK=8



Musical notation for BK=8, continuing the melody with eighth notes E16 and F16, a quarter rest, eighth notes G16 and A16, a quarter rest, eighth notes B16 and C17, a quarter rest, eighth notes D17 and E17, a quarter rest, eighth notes F17 and G17, a quarter rest, eighth notes A17 and B17, a quarter rest, eighth notes C18 and D18, and ends with a quarter note E18.

BK=9



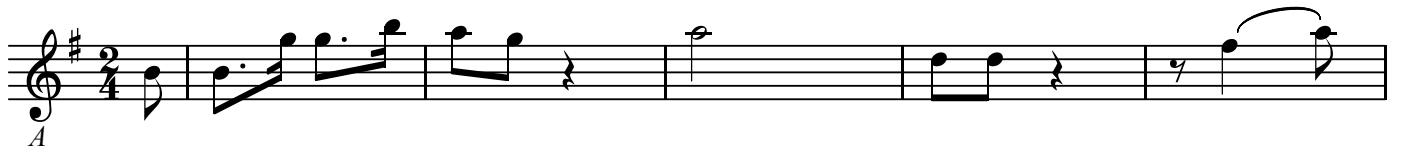
Musical notation for BK=9, continuing the melody with eighth notes F18 and G18, a quarter rest, eighth notes A18 and B18, a quarter rest, eighth notes C19 and D19, a quarter rest, eighth notes E19 and F19, a quarter rest, eighth notes G19 and A19, a quarter rest, eighth notes B19 and C20, and ends with a quarter note D20.

A

フルーメーソンの歌「我等の新しい指導者」 KV484

W.A.Mozart

BK=1



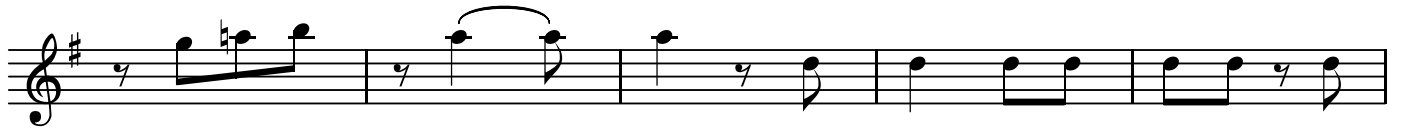
BK=2



BK=3



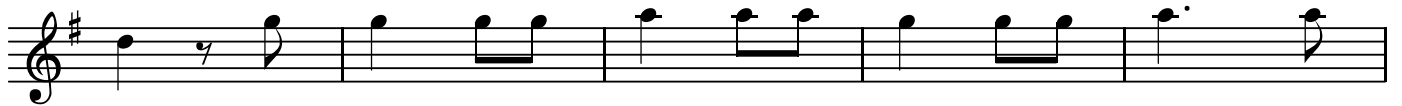
BK=4



BK=5



BK=6



BK=7



BK=8



BK=9

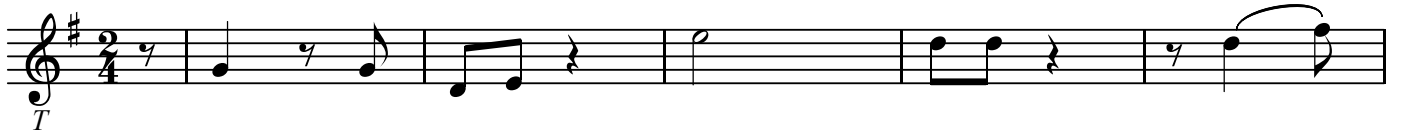


T

フルーメーソンの歌「我等の新しい指導者」 KV484

W.A.Mozart

BK=1



BK=2



BK=3



BK=4



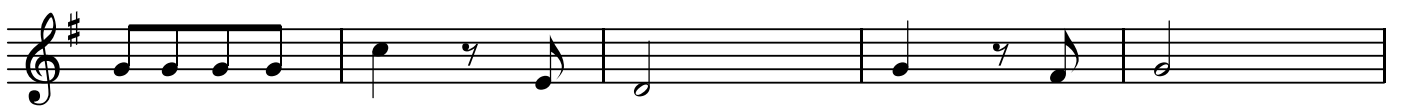
BK=5



BK=6



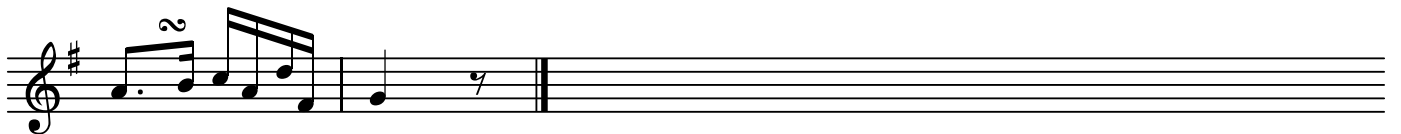
BK=7



BK=8



BK=9



B

フルーメーソンの歌「我等の新しい指導者」 KV484

W.A.Mozart

BK=1

First staff of music in bass clef, key of D major, 2/4 time signature. It begins with a dynamic marking *B*. The notation includes quarter notes, eighth notes, and rests.

BK=2

Second staff of music in bass clef, continuing the melody with various note values and rests.

BK=3

Third staff of music in bass clef, featuring a series of eighth notes with slurs and some accidentals.

BK=4

Fourth staff of music in bass clef, showing a mix of quarter and eighth notes with some ties.

BK=5

Fifth staff of music in bass clef, continuing the melodic line with eighth and quarter notes.

BK=6

Sixth staff of music in bass clef, featuring a more complex rhythmic pattern with sixteenth notes and slurs.

BK=7

Seventh staff of music in bass clef, showing a steady eighth-note rhythm with some ties.

BK=8

Eighth staff of music in bass clef, continuing the eighth-note pattern with various note heads and slurs.

BK=9

Ninth staff of music in bass clef, ending with a double bar line. It features a final flourish of sixteenth notes.