

S

No. 6

BK=1



BK=2



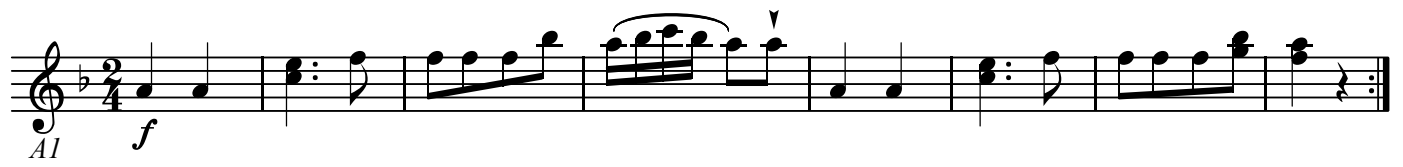
BK=3



A1

No. 6

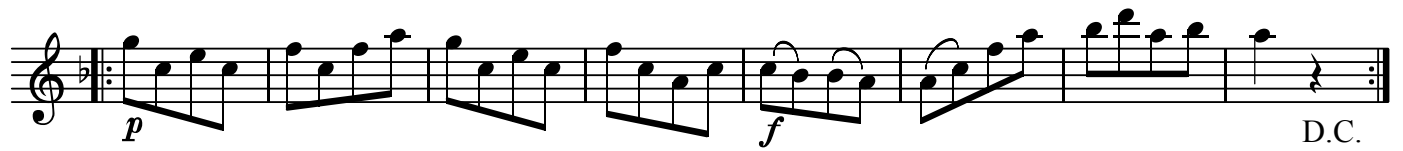
BK=1



BK=2



BK=3



A2

No. 6

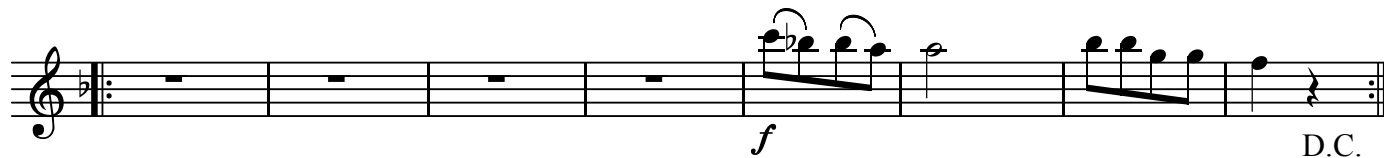
BK=1



BK=2



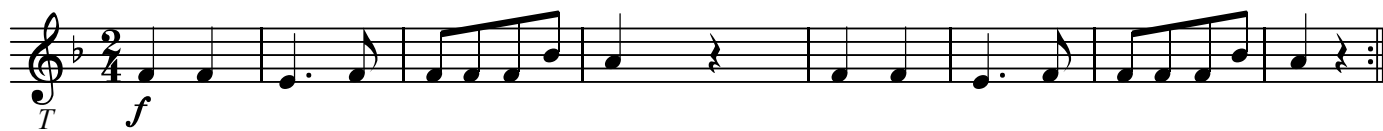
BK=3



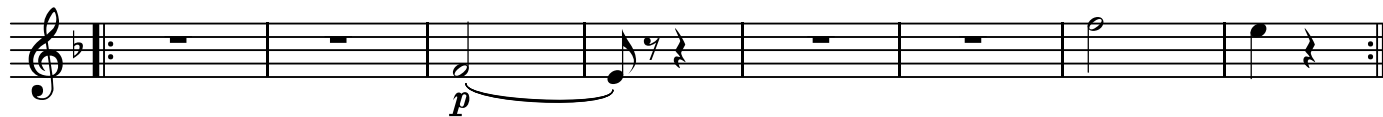
T

No. 6

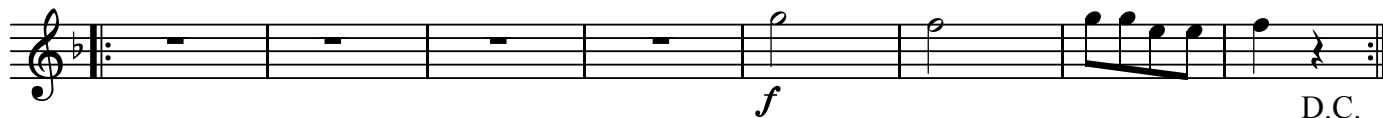
BK=1



BK=2



BK=3



B

No. 6

BK=1

BK=2

The bass line is written on a single staff in bass clef with a key signature of one flat (B-flat). It begins with a repeat sign, followed by two measures of whole rests. The melody starts in the third measure with a half note B-flat, followed by a quarter note G, a quarter rest, and a half note F. The next measure contains a quarter note E, a quarter note D, and a quarter note C. The final measure consists of a quarter note B, a quarter note A, and a quarter note G. The piece concludes with a repeat sign.

BK=3

Musical notation for the bass line of 'The Rose Tree'. The key signature is one flat (B-flat). The melody starts with a piano (*p*) dynamic, followed by a forte (*f*) dynamic. The piece concludes with a double bar line and the instruction 'D.C.' (Da Capo).