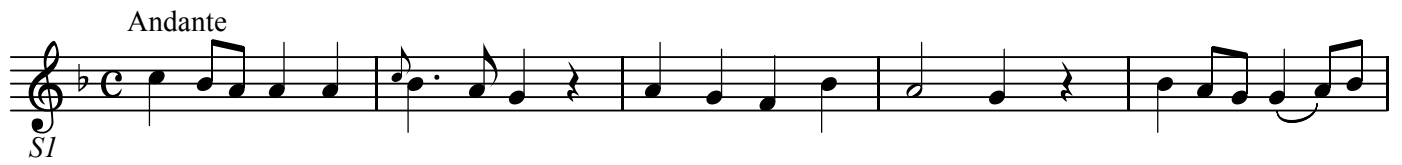


BK=1

Andante



sf

Musical notation for BK=1: Treble clef, key signature of one flat (B-flat), common time signature. The notation consists of five measures of music. The first measure starts with a quarter rest, followed by a quarter note G4, an eighth note A4, and an eighth note B4. The second measure has a quarter note C5, a quarter note B4, and a quarter rest. The third measure has a quarter note A4, a quarter note G4, and a quarter note F4. The fourth measure has a quarter note E4, a quarter note D4, and a quarter rest. The fifth measure has a quarter note C4, a quarter note B3, and a quarter note A3.

BK=2



Musical notation for BK=2: Treble clef, key signature of one flat. The notation consists of five measures of music. The first measure has a quarter note G4, a quarter note A4, and a quarter note B4. The second measure has a quarter note C5, a quarter note B4, and a quarter note A4. The third measure has a quarter note G4, a quarter note F4, and a quarter note E4. The fourth measure has a quarter note D4, a quarter note C4, and a quarter note B3. The fifth measure has a quarter note A3, a quarter note G3, and a quarter note F3.

BK=3



Musical notation for BK=3: Treble clef, key signature of one flat. The notation consists of five measures of music. The first measure has a quarter note G4, a quarter note A4, and a quarter note B4. The second measure has a quarter note C5, a quarter note B4, and a quarter note A4. The third measure has a quarter note G4, a quarter note F4, and a quarter note E4. The fourth measure has a quarter note D4, a quarter note C4, and a quarter note B3. The fifth measure has a quarter note A3, a quarter note G3, and a quarter note F3.

BK=4



Musical notation for BK=4: Treble clef, key signature of one flat. The notation consists of five measures of music. The first measure has a quarter note G4, a quarter note A4, and a quarter note B4. The second measure has a quarter note C5, a quarter note B4, and a quarter note A4. The third measure has a quarter note G4, a quarter note F4, and a quarter note E4. The fourth measure has a quarter note D4, a quarter note C4, and a quarter note B3. The fifth measure has a quarter note A3, a quarter note G3, and a quarter note F3.

BK=5



Musical notation for BK=5: Treble clef, key signature of one flat. The notation consists of five measures of music. The first measure has a quarter note G4, a quarter note A4, and a quarter note B4. The second measure has a quarter note C5, a quarter note B4, and a quarter note A4. The third measure has a quarter note G4, a quarter note F4, and a quarter note E4. The fourth measure has a quarter note D4, a quarter note C4, and a quarter note B3. The fifth measure has a quarter note A3, a quarter note G3, and a quarter note F3. Dynamics: *f* (forte) is indicated below the first measure, and *p* (piano) is indicated below the second measure.

BK=1



Musical notation for BK=1, first system. It features a treble clef, a key signature of one flat (B-flat), and a common time signature (C). The melody consists of eighth and quarter notes with some rests.

BK=2



Musical notation for BK=2, second system. It continues the melody with eighth notes and quarter notes, including some slurs and accidentals.

BK=3



Musical notation for BK=3, third system. The melody continues with eighth notes and quarter notes, featuring slurs and accidentals.

BK=4



Musical notation for BK=4, fourth system. The melody continues with eighth notes and quarter notes, including slurs and accidentals.

BK=5



Musical notation for BK=5, fifth system. The melody concludes with quarter notes and rests. Dynamic markings *f* and *p* are present below the staff.

T1

ノットウルノ「二つのかわいい目が」 KV439

W.A.Mozart

BK=1



T1
BK=2



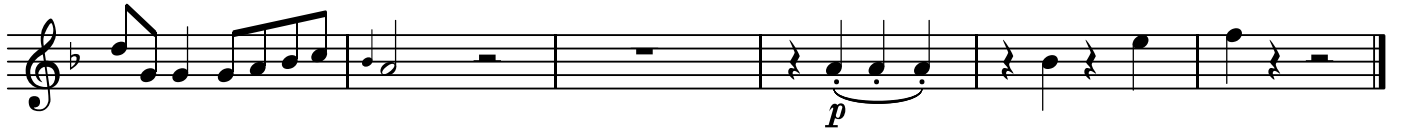
BK=3



BK=4



BK=5



BK=1



T2
BK=2



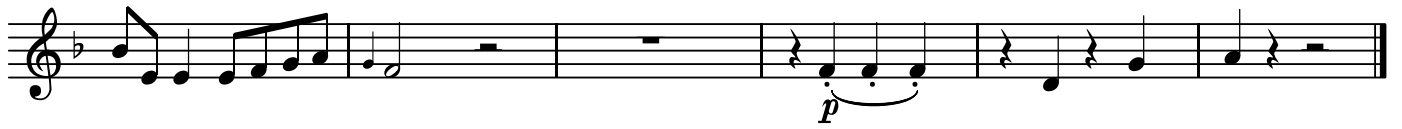
BK=3



BK=4



BK=5



B

ノットウルノ「二つのかわいい目が」 KV439

W.A.Mozart

BK=1



Musical notation for BK=1, bass clef, common time signature. The notation includes a dynamic marking *B* (Basso).

BK=2



Musical notation for BK=2, bass clef, common time signature.

BK=3



Musical notation for BK=3, bass clef, common time signature.

BK=4



Musical notation for BK=4, bass clef, common time signature.

BK=5



Musical notation for BK=5, bass clef, common time signature. The notation includes dynamic markings *f* (forte) and *p* (piano).

CB

ノットウルノ「二つのかわいい目が」 KV439

W.A.Mozart

BK=1



CB

BK=2



BK=3



BK=4



BK=5

