

ノットウルノ「さて悲しい時がやって来た」 KV436

W.A.Mozart

BK=1 Andante

First musical staff (BK=1) in treble clef, 3/4 time, key of B-flat major. It begins with a piano (p) dynamic marking. The melody features eighth and sixteenth notes with various rests.

BK=2

Second musical staff (BK=2) continuing the melody from the first staff. It includes a triplet of eighth notes in the fourth measure.

BK=3

Third musical staff (BK=3) continuing the melody. It features a sixteenth-note pattern in the final measure.

BK=4

Fourth musical staff (BK=4) continuing the melody with various rests and note values.

BK=5

Fifth musical staff (BK=5) continuing the melody, mirroring the structure of the first staff.

BK=6

Sixth musical staff (BK=6) continuing the melody, including a triplet of eighth notes.

BK=7

Seventh musical staff (BK=7) concluding the piece with a final cadence and a double bar line.

A

ノットウルノ「さて悲しい時がやって来た」 KV436

W.A.Mozart

BK=1

Musical staff BK=1, starting with a treble clef, a key signature of one flat (B-flat), and a 3/4 time signature. The staff contains a melodic line with eighth and sixteenth notes, including slurs and a fermata over the final measure.

BK=2

Musical staff BK=2, continuing the melodic line with eighth and sixteenth notes, slurs, and a fermata over the final measure.

BK=3

Musical staff BK=3, continuing the melodic line with eighth and sixteenth notes, slurs, and a fermata over the final measure.

BK=4

Musical staff BK=4, continuing the melodic line with eighth and sixteenth notes, slurs, and a fermata over the final measure.

BK=5

Musical staff BK=5, continuing the melodic line with eighth and sixteenth notes, slurs, and a fermata over the final measure.

BK=6

Musical staff BK=6, continuing the melodic line with eighth and sixteenth notes, slurs, and a fermata over the final measure.

BK=7

Musical staff BK=7, continuing the melodic line with eighth and sixteenth notes, slurs, and a fermata over the final measure.

T

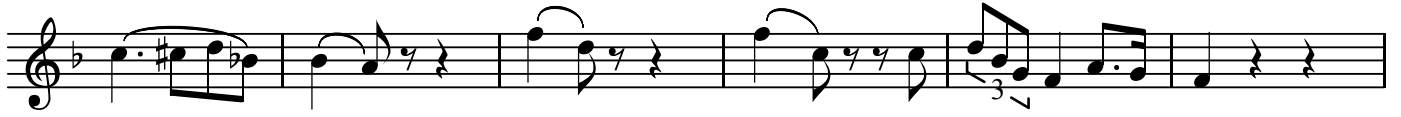
ノットウルノ「さて悲しい時がやって来た」 KV436

W.A.Mozart

BK=1



BK=2



BK=3



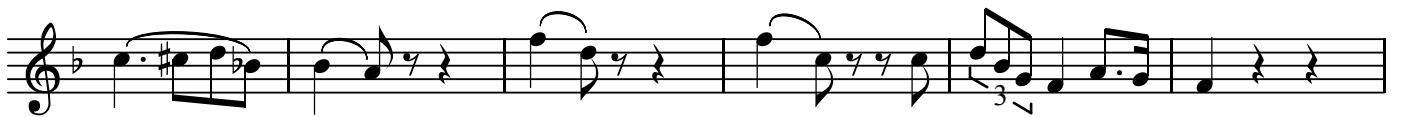
BK=4



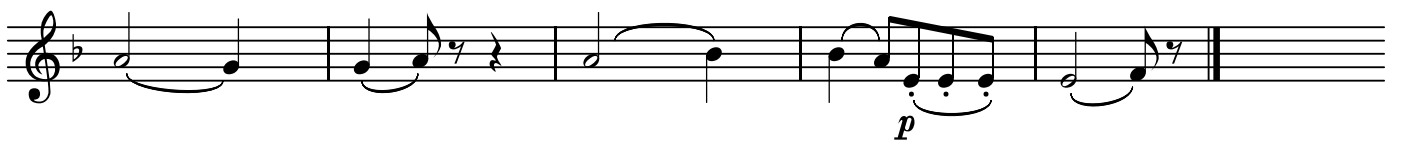
BK=5



BK=6



BK=7

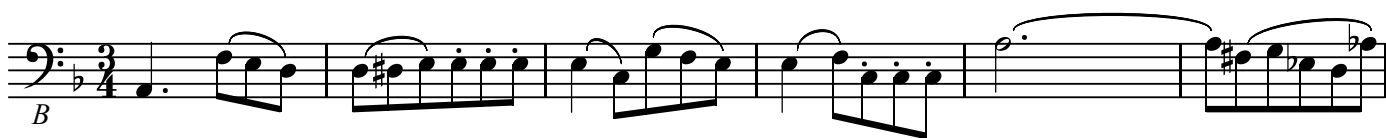


B

ノットウルノ「さて悲しい時がやって来た」 KV436

W.A.Mozart

BK=1



Musical notation for BK=1, starting with a bass clef, a key signature of one flat (B-flat), and a 3/4 time signature. The piece begins with a dynamic marking of *B* (forte). The notation consists of a single staff with various rhythmic patterns, including eighth and sixteenth notes, and rests.

BK=2



Musical notation for BK=2, continuing the piece. It features a triplet of eighth notes in the fifth measure, indicated by a '3' above the notes.

BK=3



Musical notation for BK=3, showing a continuation of the melodic line with various note values and rests.

BK=4



Musical notation for BK=4, featuring a series of eighth notes and a final measure with a whole note rest.

BK=5



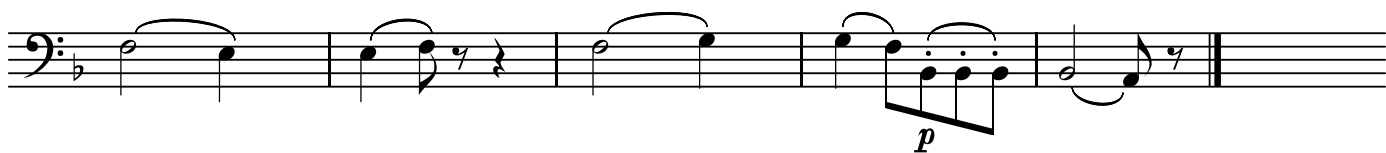
Musical notation for BK=5, which is a repeat of the first system (BK=1).

BK=6



Musical notation for BK=6, which is a repeat of the second system (BK=2).

BK=7



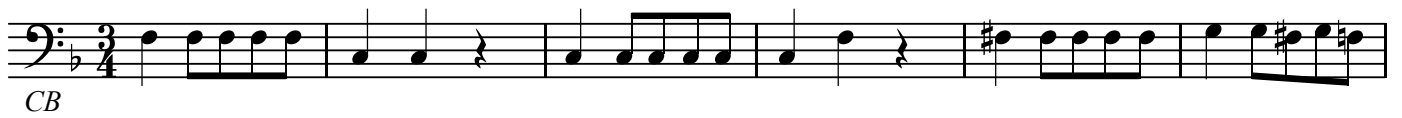
Musical notation for BK=7, concluding the piece with a dynamic marking of *p* (piano) in the final measure.

CB

ノットウルノ「さて悲しい時がやって来た」 KV436

W.A.Mozart

BK=1



CB

BK=2



BK=3



BK=4



BK=5



BK=6



BK=7

