

S1

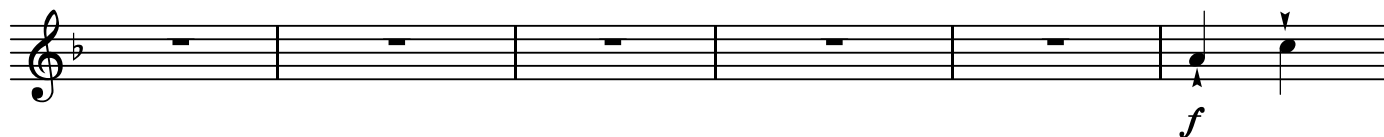
第7番 歩け、歩け、消えてなくなれ

BK=1 Allegro



S1

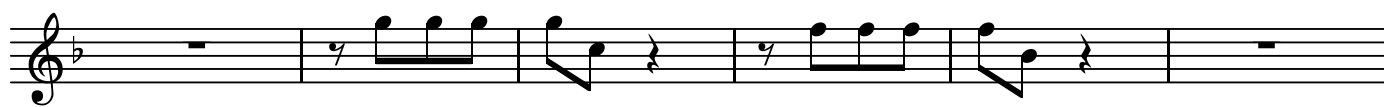
BK=2



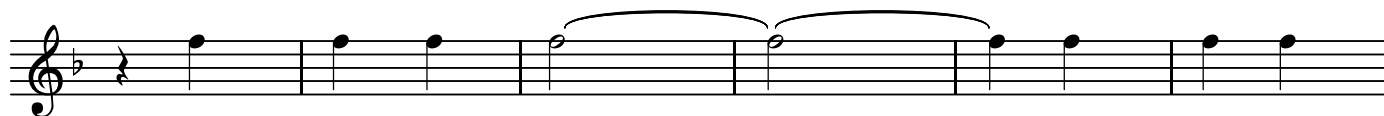
BK=3



BK=4



BK=5



BK=6



BK=7



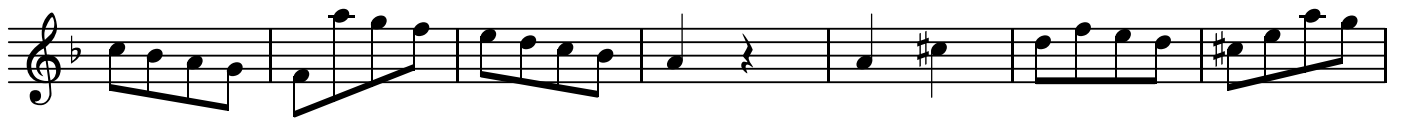
BK=8



BK=9



BK=10



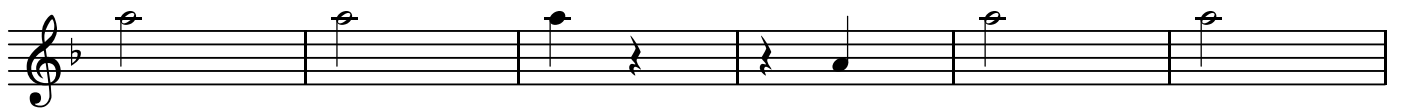
BK=11



BK=12



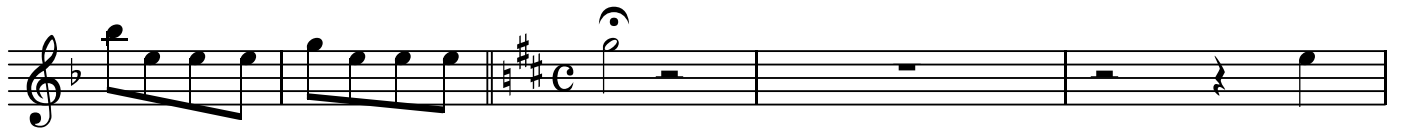
BK=13



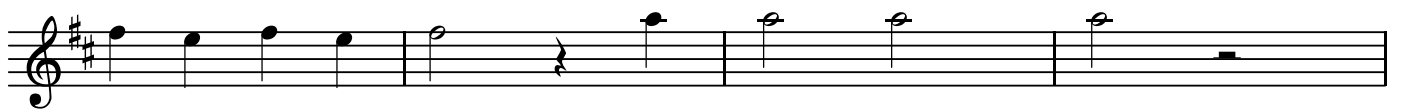
BK=14



BK=15



BK=16



BK=17



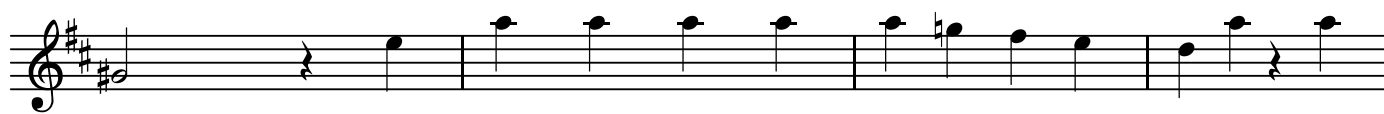
BK=18



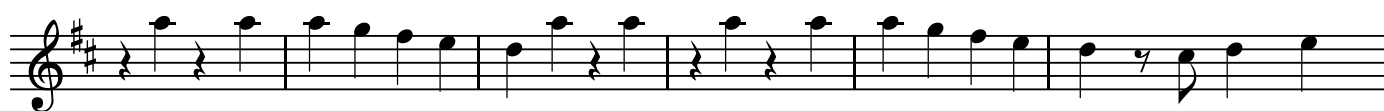
BK=19



BK=20



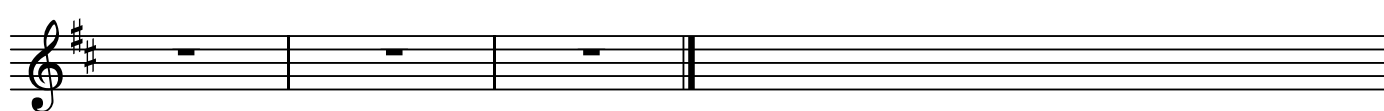
BK=21



BK=22

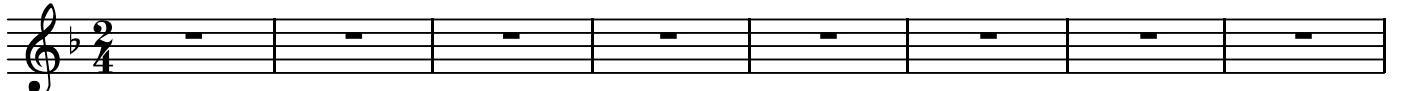


BK=23



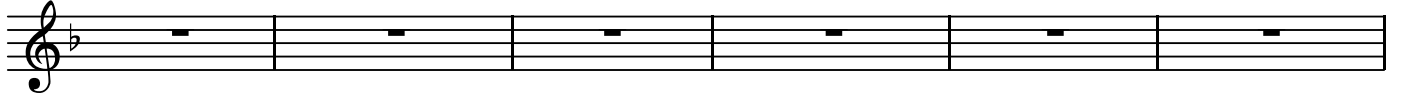
第7番 歩け、歩け、消えてなくなれ

BK=1



S2

BK=2



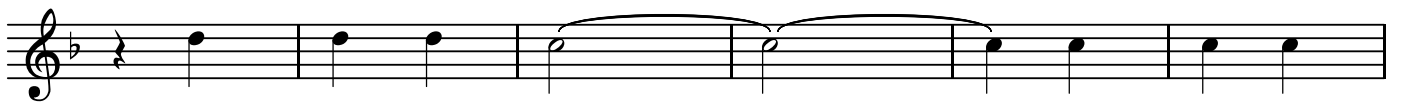
BK=3



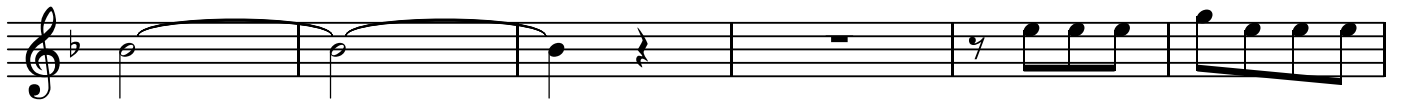
BK=4



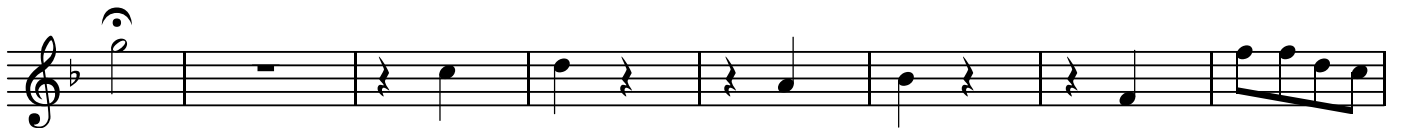
BK=5



BK=6



BK=7



BK=8



BK=9



BK=10



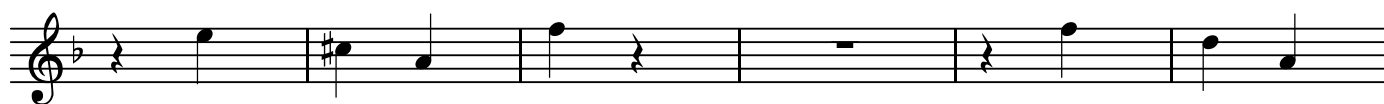
BK=11



BK=12



BK=13



BK=14



BK=15



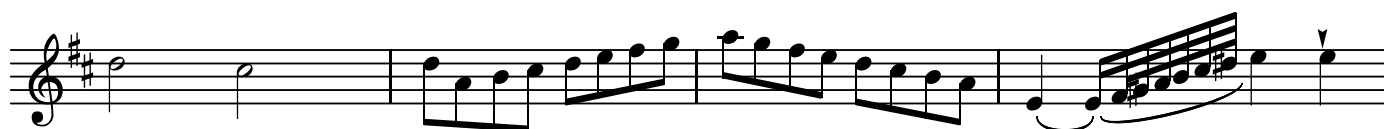
BK=16



BK=17



BK=18



BK=19



BK=20



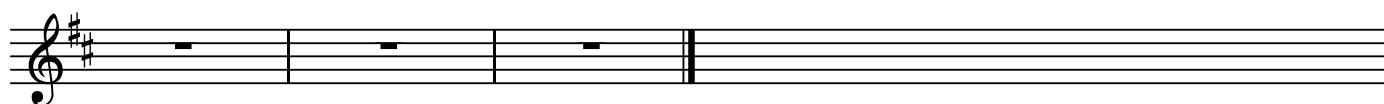
BK=21



BK=22



BK=23



A

第7番 歩け、歩け、消えてなくなれ

BK=1

Musical staff BK=1, treble clef, 2/4 time signature. The staff contains a melody starting with a quarter note G4, followed by quarter notes A4, B4, and C5. There are rests for the next two measures, followed by quarter notes B4, A4, and G4. The piece concludes with a quarter note G4 and a quarter rest. Dynamics include a forte (*f*) marking under the first measure and a piano (*p*) marking under the eighth measure.

BK=2

Musical staff BK=2, treble clef. The staff contains a complex melodic line with many sixteenth and thirty-second notes, including some beamed sixteenth notes. The piece ends with a quarter note G4 and a quarter rest.

BK=3

Musical staff BK=3, treble clef. The staff contains a melodic line with eighth and sixteenth notes, including some beamed sixteenth notes. The piece ends with a quarter note G4 and a quarter rest.

BK=4

Musical staff BK=4, treble clef. The staff contains a melodic line with eighth and sixteenth notes, including some beamed sixteenth notes. The piece ends with a quarter note G4 and a quarter rest.

BK=5

Musical staff BK=5, treble clef. The staff contains a melodic line with eighth and sixteenth notes, including some beamed sixteenth notes. The piece ends with a quarter note G4 and a quarter rest.

BK=6

Musical staff BK=6, treble clef. The staff contains a melodic line with eighth and sixteenth notes, including some beamed sixteenth notes. The piece ends with a quarter note G4 and a quarter rest.

BK=7

Musical staff BK=7, treble clef. The staff contains a melodic line with eighth and sixteenth notes, including some beamed sixteenth notes. The piece ends with a quarter note G4 and a quarter rest. Dynamics include a fortissimo piano (*fp*) marking under the first measure and a fortissimo (*f*) marking under the seventh measure.

BK=8

Musical staff BK=8, treble clef. The staff contains a melodic line with eighth and sixteenth notes, including some beamed sixteenth notes. The piece ends with a quarter note G4 and a quarter rest. Dynamics include a fortissimo piano (*fp*) marking under the first measure and a fortissimo piano (*fp*) marking under the third measure.

BK=9

Musical staff BK=9, treble clef. The staff contains a melodic line with eighth and sixteenth notes, including some beamed sixteenth notes. The piece ends with a quarter note G4 and a quarter rest. Dynamics include a piano (*p*) marking under the first measure, a crescendo (*cresc.*) marking under the second measure, a forte (*f*) marking under the fourth measure, and a forte (*f*) marking under the eighth measure.

BK=10

Musical staff BK=10, treble clef, key signature of one flat. The staff contains seven measures of music. The first measure has a dynamic marking of *p*. The second measure has a dynamic marking of *f*. The third measure has a dynamic marking of *p*. The notes are: G4, A4, B4, C5, B4, A4, G4.

BK=11

Musical staff BK=11, treble clef, key signature of one flat. The staff contains seven measures of music. The first measure has a dynamic marking of *f*. The second measure has a dynamic marking of *p*. The third measure has a dynamic marking of *p*. The notes are: G4, A4, B4, C5, B4, A4, G4.

BK=12

Musical staff BK=12, treble clef, key signature of one flat. The staff contains seven measures of music. The first measure has a dynamic marking of *f*. The notes are: G4, A4, B4, C5, B4, A4, G4.

BK=13

Musical staff BK=13, treble clef, key signature of one flat. The staff contains seven measures of music. The notes are: G4, A4, B4, C5, B4, A4, G4.

BK=14

Musical staff BK=14, treble clef, key signature of one flat. The staff contains seven measures of music. The notes are: G4, A4, B4, C5, B4, A4, G4.

BK=15

Musical staff BK=15, treble clef, key signature of one flat. The staff contains seven measures of music. The first measure has a dynamic marking of *f*. The second measure has a dynamic marking of *p*. The notes are: G4, A4, B4, C5, B4, A4, G4.

BK=16

Musical staff BK=16, treble clef, key signature of one flat. The staff contains seven measures of music. The notes are: G4, A4, B4, C5, B4, A4, G4.

BK=17

Musical staff BK=17, treble clef, key signature of one flat. The staff contains seven measures of music. The first measure has a dynamic marking of *f*. The notes are: G4, A4, B4, C5, B4, A4, G4.

BK=18

Musical staff BK=18, treble clef, key signature of one flat. The staff contains seven measures of music. The notes are: G4, A4, B4, C5, B4, A4, G4.



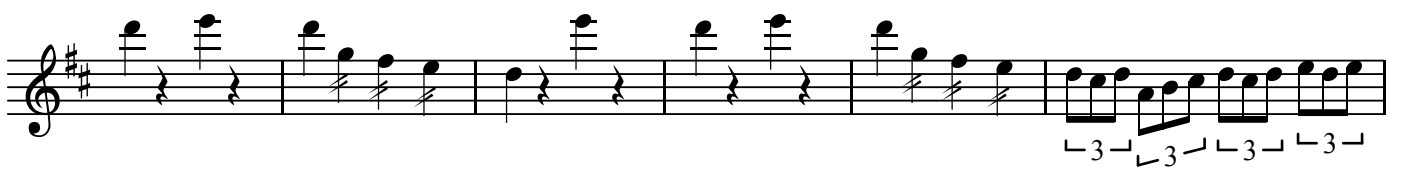
BK=19



BK=20



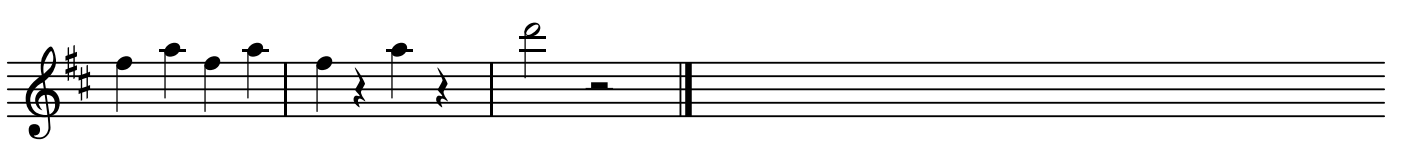
BK=21



BK=22



BK=23



T

第7番 歩け、歩け、消えてなくなれ

BK=1



BK=2



BK=3



BK=4



BK=5



BK=6



BK=7



BK=8



BK=9



BK=10



BK=11



BK=12



BK=13



BK=14



BK=15



BK=16



BK=17



BK=18



BK=19



BK=20



BK=21



BK=22



BK=23



第7番 歩け、歩け、消えてなくなれ

BK=1

Musical staff for BK=1. Bass clef, 2/4 time signature. The staff contains several measures with notes and rests. Dynamics include *f* (forte) and *p* (piano).

BK=2

Musical staff for BK=2. Bass clef. The staff contains several measures with notes and rests. Dynamics include *f* (forte) and *p* (piano).

BK=3

Musical staff for BK=3. Bass clef. The staff contains several measures with notes and rests. Dynamics include *f* (forte) and *p* (piano).

BK=4

Musical staff for BK=4. Bass clef. The staff contains several measures with notes and rests. Dynamics include *f* (forte) and *p* (piano).

BK=5

Musical staff for BK=5. Bass clef. The staff contains several measures with notes and rests. Dynamics include *f* (forte) and *p* (piano).

BK=6

Musical staff for BK=6. Bass clef. The staff contains several measures with notes and rests. Dynamics include *f* (forte) and *p* (piano).

BK=7

Musical staff for BK=7. Bass clef. The staff contains several measures with notes and rests, including slurs. Dynamics include *sfp* (sforzando piano).

BK=8

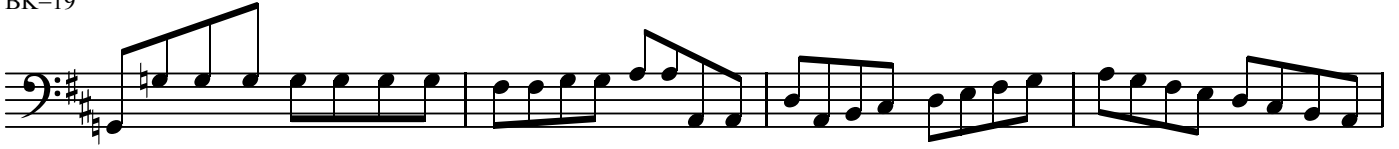
Musical staff for BK=8. Bass clef. The staff contains several measures with notes and rests, including slurs. Dynamics include *sfp* (sforzando piano).

BK=9

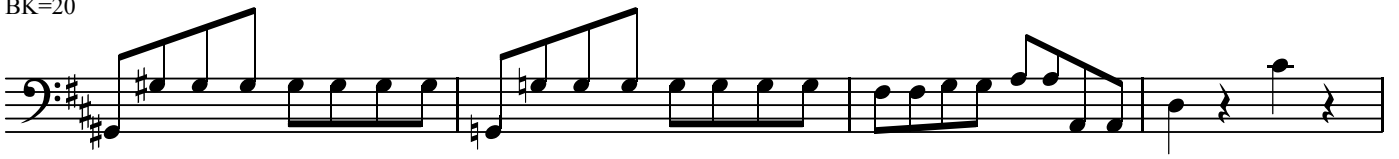
Musical staff for BK=9. Bass clef. The staff contains several measures with notes and rests. Dynamics include *p* (piano), *cresc.* (crescendo), and *f* (forte).



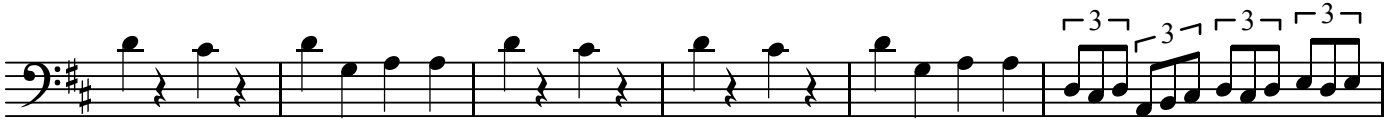
BK=19



BK=20



BK=21



BK=22



BK=23

