

第6番 わたしは愛していました

BK=1 Allegro

Musical staff BK=1, starting with a treble clef, a key signature of one sharp (F#), and a common time signature (C). The staff contains a melodic line with a dynamic marking of *f* (forte) and the tempo marking *S1*.

BK=2

Musical staff BK=2, continuing the melodic line from the previous staff.

BK=3

Musical staff BK=3, continuing the melodic line.

BK=4

Musical staff BK=4, continuing the melodic line.

BK=5

Musical staff BK=5, continuing the melodic line.

BK=6

Musical staff BK=6, continuing the melodic line.

BK=7

Musical staff BK=7, continuing the melodic line.

BK=8

Musical staff BK=8, continuing the melodic line. A trill (tr) is indicated above a note.

BK=9

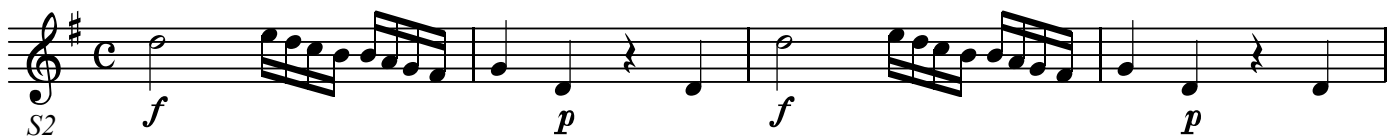
Musical staff BK=9, continuing the melodic line.

BK=10

Musical staff BK=10, continuing the melodic line. A trill (tr) is indicated above a note.

第6番 わたしは愛していました

BK=1



BK=2



BK=3



BK=4



BK=5



BK=6



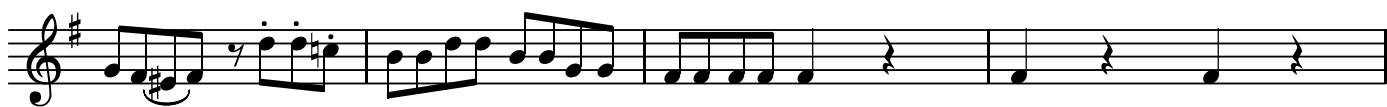
BK=7



BK=8



BK=9



BK=10



BK=11

Musical staff for BK=11, featuring a treble clef and a key signature of one sharp (F#). The staff contains a melodic line with dynamic markings *f*, *p*, and *f*. The music consists of eighth and sixteenth notes, with some slurs and accents.

BK=12

Musical staff for BK=12, featuring a treble clef and a key signature of one sharp (F#). The staff contains a melodic line with dynamic markings *f* and *p*. The music consists of eighth and sixteenth notes, with some slurs and accents.

BK=13

Musical staff for BK=13, featuring a treble clef and a key signature of one sharp (F#). The staff contains a melodic line with dynamic markings *f* and *p*, and a *cresc.* marking. The music consists of eighth and sixteenth notes, with some slurs and accents.

BK=14

Musical staff for BK=14, featuring a treble clef and a key signature of one sharp (F#). The staff contains a melodic line with dynamic markings *mf*, *p*, *cresc.*, and *mf*. The music consists of eighth and sixteenth notes, with some slurs and accents.

BK=15

Musical staff for BK=15, featuring a treble clef and a key signature of one sharp (F#). The staff contains a melodic line with dynamic markings *p* and *mf*. The music consists of eighth and sixteenth notes, with some slurs and accents.

BK=16

Musical staff for BK=16, featuring a treble clef and a key signature of one sharp (F#). The staff contains a melodic line with dynamic markings *cresc.*, *sf*, and *p*. The music consists of eighth and sixteenth notes, with some slurs and accents.

BK=17

Musical staff for BK=17, featuring a treble clef and a key signature of one sharp (F#). The staff contains a melodic line with dynamic markings *f*, *p*, *f*, and *p*. The music consists of eighth and sixteenth notes, with some slurs and accents.

BK=18

Musical staff for BK=18, featuring a treble clef and a key signature of one sharp (F#). The staff contains a melodic line with dynamic markings *f* and *p*. The music consists of eighth and sixteenth notes, with some slurs and accents.

BK=19

Musical staff for BK=19, featuring a treble clef and a key signature of one sharp (F#). The staff contains a melodic line with dynamic markings *f* and *p*. The music consists of eighth and sixteenth notes, with some slurs and accents.

BK=20

Musical staff for BK=20, featuring a treble clef and a key signature of one sharp (F#). The staff contains a melodic line with dynamic markings *cresc.*, *sfp*, *sfp*, and *sfp*. The music consists of eighth and sixteenth notes, with some slurs and accents.

BK=21

Musical staff for BK=21, featuring a treble clef and a key signature of one sharp (F#). The staff contains a sequence of notes with dynamic markings: *p* (piano) and *sfp* (sforzando piano). The notes are grouped with slurs and include some rests.

BK=22

Musical staff for BK=22, featuring a treble clef and a key signature of one sharp (F#). The staff contains a sequence of notes with dynamic markings: *fp* (forzando piano). The notes are grouped with slurs and include some rests.

BK=23

Musical staff for BK=23, featuring a treble clef and a key signature of one sharp (F#). The staff contains a sequence of notes with dynamic markings: *fp* (forzando piano). The notes are grouped with slurs and include some rests.

BK=24

Musical staff for BK=24, featuring a treble clef and a key signature of one sharp (F#). The staff contains a sequence of notes with dynamic markings: *p* (piano). The notes are grouped with slurs and include some rests.

BK=25

Musical staff for BK=25, featuring a treble clef and a key signature of one sharp (F#). The staff contains a sequence of notes with dynamic markings: *p* (piano). The notes are grouped with slurs and include some rests.

BK=26

Musical staff for BK=26, featuring a treble clef and a key signature of one sharp (F#). The staff contains a sequence of notes with dynamic markings: *cresc.* (crescendo), *sf* (sforzando), *p* (piano), *sf* (sforzando), and *p* (piano). The notes are grouped with slurs and include some rests.

BK=27

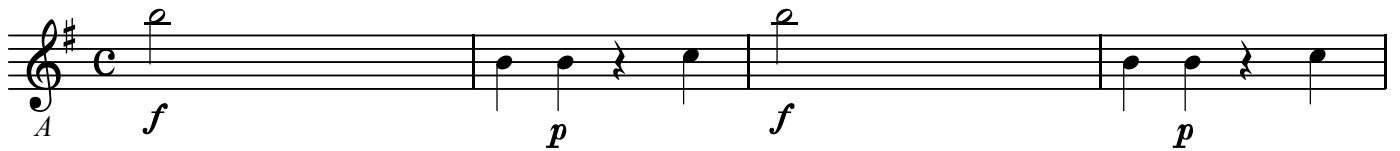
Musical staff for BK=27, featuring a treble clef and a key signature of one sharp (F#). The staff contains a sequence of notes with dynamic markings: *cresc.* (crescendo) and *f* (forte). The notes are grouped with slurs and include some rests.

BK=28

Musical staff for BK=28, featuring a treble clef and a key signature of one sharp (F#). The staff contains a sequence of notes with dynamic markings: *f* (forte). The notes are grouped with slurs and include some rests.

第6番 わたしは愛していました

BK=1



BK=2



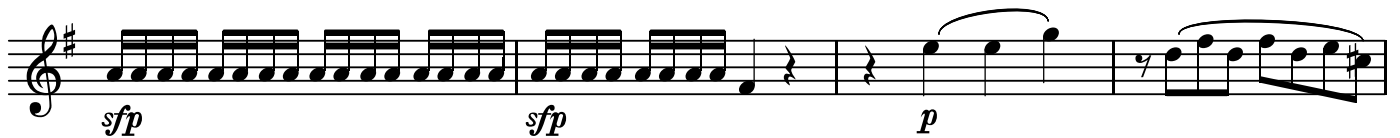
BK=3



BK=4



BK=5



BK=6



BK=7



BK=8



BK=9



BK=10



BK=11

Musical notation for BK=11, featuring a treble clef and a key signature of one sharp (F#). The piece begins with a dynamic marking of *f* (forte). The first two measures contain quarter notes with accidentals. The third measure starts with a dynamic marking of *p* (piano) and contains a sixteenth-note triplet. The final measure returns to *f* and contains a sixteenth-note triplet.

BK=12

Musical notation for BK=12, featuring a treble clef and a key signature of one sharp (F#). The piece begins with a dynamic marking of *p* (piano) and contains a sixteenth-note triplet. The second measure contains a half note with an accidental. The third measure contains a sixteenth-note triplet. The final measure contains a quarter note followed by a quarter rest.

BK=13

Musical notation for BK=13, featuring a treble clef and a key signature of one sharp (F#). The piece begins with a sixteenth-note triplet. The second measure contains a half note with an accidental. The third measure contains a sixteenth-note triplet. The final measure contains a quarter note followed by a quarter rest, with a *cresc.* (crescendo) marking below it.

BK=14

Musical notation for BK=14, featuring a treble clef and a key signature of one sharp (F#). The piece begins with a dynamic marking of *mf* (mezzo-forte) and contains a sixteenth-note triplet. The second measure contains a half note with an accidental and a dynamic marking of *p* (piano). The third measure contains a sixteenth-note triplet. The fourth measure contains a sixteenth-note triplet with a *cresc.* (crescendo) marking below it. The final measure contains a sixteenth-note triplet with a dynamic marking of *mf* (mezzo-forte).

BK=15

Musical notation for BK=15, featuring a treble clef and a key signature of one sharp (F#). The piece begins with a dynamic marking of *p* (piano) and contains a sixteenth-note triplet. The second measure contains a sixteenth-note triplet. The third measure contains a sixteenth-note triplet. The fourth measure contains a sixteenth-note triplet. The final measure contains a sixteenth-note triplet.

BK=16

Musical notation for BK=16, featuring a treble clef and a key signature of one sharp (F#). The piece begins with a sixteenth-note triplet. The second measure contains a sixteenth-note triplet. The third measure contains a sixteenth-note triplet. The fourth measure contains a sixteenth-note triplet. The final measure contains a quarter note with an accent and a dynamic marking of *p* (piano).

BK=17

Musical notation for BK=17, featuring a treble clef and a key signature of one sharp (F#). The piece begins with a dynamic marking of *f* (forte) and contains a half note with an accent. The second measure contains a half note with an accent and a dynamic marking of *p* (piano). The third measure contains a half note with an accent and a dynamic marking of *f* (forte). The final measure contains a half note with an accent and a dynamic marking of *p* (piano).

BK=18

Musical notation for BK=18, featuring a treble clef and a key signature of one sharp (F#). The piece begins with a half note. The second measure contains a half note. The third measure contains a half note. The fourth measure contains a sixteenth-note triplet with a dynamic marking of *f* (forte). The final measure contains a sixteenth-note triplet with a dynamic marking of *f* (forte).

BK=19

Musical notation for BK=19, featuring a treble clef and a key signature of one sharp (F#). The piece begins with a sixteenth-note triplet. The second measure contains a sixteenth-note triplet. The third measure contains a sixteenth-note triplet. The fourth measure contains a sixteenth-note triplet. The final measure contains a half note.

BK=20

Musical notation for BK=20, featuring a treble clef and a key signature of one sharp (F#). The piece begins with a quarter note followed by a quarter rest. The second measure contains a sixteenth-note triplet with a dynamic marking of *sfp* (sforzando piano). The third measure contains a sixteenth-note triplet with a dynamic marking of *sfp* (sforzando piano). The fourth measure contains a sixteenth-note triplet with a dynamic marking of *sfp* (sforzando piano). The final measure contains a quarter note.

BK=21

Musical notation for BK=21, featuring a treble clef and a key signature of one sharp (F#). The piece begins with a half rest, followed by a quarter note G4, a quarter note A4, and a quarter note B4. This is followed by a quarter rest, then a quarter note G4, a quarter note A4, and a quarter note B4. The final two measures consist of sixteenth-note runs: the first measure contains eight sixteenth notes (G4, A4, B4, C5, B4, A4, G4, F#4), and the second measure contains eight sixteenth notes (F#4, G4, A4, B4, C5, B4, A4, G4). Dynamic markings are *p* under the first measure, and *sfp* under the second and third measures.

BK=22

Musical notation for BK=22, featuring a treble clef and a key signature of one sharp (F#). The piece begins with a sixteenth-note run of eight notes (G4, A4, B4, C5, B4, A4, G4, F#4), followed by a quarter rest. The next measure contains a quarter note G4, a quarter note A4, and a quarter note B4. This is followed by a quarter rest, then a quarter note G4, a quarter note A4, and a quarter note B4. The final two measures consist of sixteenth-note runs: the first measure contains eight sixteenth notes (G4, A4, B4, C5, B4, A4, G4, F#4), and the second measure contains eight sixteenth notes (F#4, G4, A4, B4, C5, B4, A4, G4). Dynamic markings are *sfp* under the first measure, and *fp* under the second, third, and fourth measures.

BK=23

Musical notation for BK=23, featuring a treble clef and a key signature of one sharp (F#). The piece begins with a quarter note G4, a quarter note A4, and a quarter note B4. This is followed by a quarter rest, then a quarter note G4, a quarter note A4, and a quarter note B4. The next two measures each contain a quarter note G4, a quarter note A4, and a quarter note B4. The final two measures each contain a quarter note G4, a quarter note A4, and a quarter note B4.

BK=24

Musical notation for BK=24, featuring a treble clef and a key signature of one sharp (F#). The piece begins with a quarter note G4, a quarter note A4, and a quarter note B4. This is followed by a quarter rest, then a quarter note G4, a quarter note A4, and a quarter note B4. The next two measures each contain a quarter note G4, a quarter note A4, and a quarter note B4. The final two measures each contain a quarter note G4, a quarter note A4, and a quarter note B4. Dynamic marking is *p* under the final measure.

BK=25

Musical notation for BK=25, featuring a treble clef and a key signature of one sharp (F#). The piece begins with a quarter note G4, a quarter note A4, and a quarter note B4. This is followed by a quarter rest, then a quarter note G4, a quarter note A4, and a quarter note B4. The next two measures each contain a quarter note G4, a quarter note A4, and a quarter note B4. The final two measures each contain a quarter note G4, a quarter note A4, and a quarter note B4.

BK=26

Musical notation for BK=26, featuring a treble clef and a key signature of one sharp (F#). The piece begins with a quarter note G4, a quarter note A4, and a quarter note B4. This is followed by a quarter rest, then a quarter note G4, a quarter note A4, and a quarter note B4. The next two measures each contain a quarter note G4, a quarter note A4, and a quarter note B4. The final two measures each contain a quarter note G4, a quarter note A4, and a quarter note B4. Dynamic markings are *cresc.* under the first measure, *sf* under the second measure, *p* under the third measure, *sf* under the fourth measure, and *p* under the fifth measure.

BK=27

Musical notation for BK=27, featuring a treble clef and a key signature of one sharp (F#). The piece begins with a quarter note G4, a quarter note A4, and a quarter note B4. This is followed by a quarter rest, then a quarter note G4, a quarter note A4, and a quarter note B4. The next two measures each contain a quarter note G4, a quarter note A4, and a quarter note B4. The final two measures each contain a quarter note G4, a quarter note A4, and a quarter note B4. Dynamic markings are *cresc.* under the first measure and *f* under the second measure.

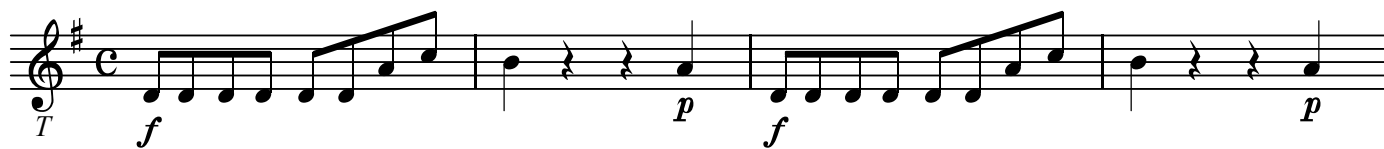
BK=28

Musical notation for BK=28, featuring a treble clef and a key signature of one sharp (F#). The piece begins with a quarter note G4, a quarter note A4, and a quarter note B4. This is followed by a quarter rest, then a quarter note G4, a quarter note A4, and a quarter note B4. The next two measures each contain a quarter note G4, a quarter note A4, and a quarter note B4. The final two measures each contain a quarter note G4, a quarter note A4, and a quarter note B4.

T

第6番 わたしは愛していました

BK=1



Musical notation for BK=1, featuring a treble clef, a key signature of one sharp (F#), and a common time signature (C). The notation includes a series of eighth notes and quarter notes, with dynamic markings *f* and *p*. A *T* marking is present at the beginning.

BK=2



Musical notation for BK=2, featuring a treble clef, a key signature of one sharp (F#), and a common time signature (C). The notation includes a series of quarter notes and a half note, with a long note at the end.

BK=3



Musical notation for BK=3, featuring a treble clef, a key signature of one sharp (F#), and a common time signature (C). The notation includes a series of quarter notes and eighth notes, with a slur over the final notes.

BK=4



Musical notation for BK=4, featuring a treble clef, a key signature of one sharp (F#), and a common time signature (C). The notation includes a series of quarter notes and eighth notes, with dynamic markings *fp* and *sfp*.

BK=5



Musical notation for BK=5, featuring a treble clef, a key signature of one sharp (F#), and a common time signature (C). The notation includes a series of quarter notes and eighth notes, with dynamic markings *sfp* and *p*.

BK=6



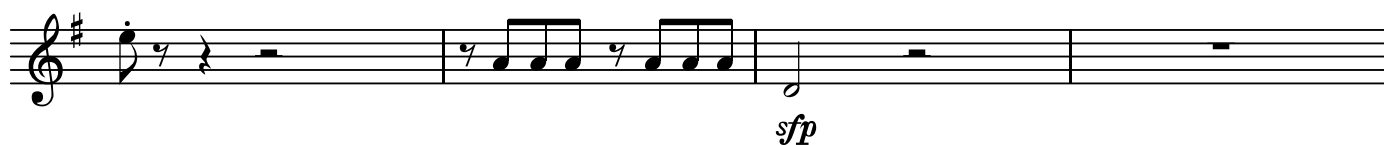
Musical notation for BK=6, featuring a treble clef, a key signature of one sharp (F#), and a common time signature (C). The notation includes a series of quarter notes and eighth notes, with dynamic markings *sfp* and *sfp*.

BK=7



Musical notation for BK=7, featuring a treble clef, a key signature of one sharp (F#), and a common time signature (C). The notation includes a series of eighth notes and quarter notes, with a slur over the final notes.

BK=8



Musical notation for BK=8, featuring a treble clef, a key signature of one sharp (F#), and a common time signature (C). The notation includes a series of eighth notes and quarter notes, with a dynamic marking *sfp*.

BK=9



Musical notation for BK=9, featuring a treble clef, a key signature of one sharp (F#), and a common time signature (C). The notation includes a series of quarter notes and eighth notes, with a slur over the final notes.

BK=10



Musical notation for BK=10, featuring a treble clef, a key signature of one sharp (F#), and a common time signature (C). The notation includes a series of eighth notes and quarter notes, with a dynamic marking *cresc.*

BK=11

Musical staff for BK=11, featuring a treble clef and a key signature of one sharp (F#). The staff contains four measures of music. The first measure starts with a dynamic marking of *f* (forte). The second measure is a whole note. The third measure begins with a dynamic marking of *p* (piano) and contains eighth notes. The fourth measure continues with eighth notes and ends with a dynamic marking of *f*.

BK=12

Musical staff for BK=12, featuring a treble clef and a key signature of one sharp (F#). The staff contains four measures of music. The first measure starts with a dynamic marking of *p* (piano) and contains a whole note. The second measure is a half note. The third measure is a whole note. The fourth measure contains a half note and a quarter note.

BK=13

Musical staff for BK=13, featuring a treble clef and a key signature of one sharp (F#). The staff contains six measures of music. The first measure is a whole note. The second measure is a half note. The third measure is a half note. The fourth measure is a half note. The fifth measure is a half note. The sixth measure contains eighth notes and is marked with *cresc.* (crescendo).

BK=14

Musical staff for BK=14, featuring a treble clef and a key signature of one sharp (F#). The staff contains six measures of music. The first measure starts with a dynamic marking of *mf* (mezzo-forte) and contains eighth notes. The second measure is a half note. The third measure contains eighth notes. The fourth measure contains eighth notes and is marked with *cresc.*. The fifth measure contains eighth notes and is marked with *mf*. The sixth measure contains eighth notes.

BK=15

Musical staff for BK=15, featuring a treble clef and a key signature of one sharp (F#). The staff contains six measures of music. The first measure starts with a dynamic marking of *p* and contains a whole note. The second measure contains eighth notes. The third measure contains eighth notes. The fourth measure contains eighth notes. The fifth measure contains eighth notes. The sixth measure contains eighth notes.

BK=16

Musical staff for BK=16, featuring a treble clef and a key signature of one sharp (F#). The staff contains six measures of music. The first measure contains eighth notes. The second measure contains eighth notes and is marked with *cresc.*. The third measure is a whole note and is marked with *sf* (sforzando). The fourth measure is a whole note. The fifth measure contains eighth notes and is marked with *p*. The sixth measure contains eighth notes.

BK=17

Musical staff for BK=17, featuring a treble clef and a key signature of one sharp (F#). The staff contains six measures of music. The first measure starts with a dynamic marking of *f* and contains eighth notes. The second measure is a whole note and is marked with *p*. The third measure contains eighth notes and is marked with *f*. The fourth measure contains eighth notes. The fifth measure is a whole note and is marked with *p*. The sixth measure is a whole note.

BK=18

Musical staff for BK=18, featuring a treble clef and a key signature of one sharp (F#). The staff contains five measures of music, each consisting of a whole note.

BK=19

Musical staff for BK=19, featuring a treble clef and a key signature of one sharp (F#). The staff contains five measures of music. The first measure contains eighth notes. The second measure contains eighth notes. The third measure is a whole note. The fourth measure contains eighth notes. The fifth measure contains eighth notes.

BK=20

Musical staff for BK=20, featuring a treble clef and a key signature of one sharp (F#). The staff contains four measures of music. The first measure is a whole note. The second measure contains eighth notes and is marked with *sfp* (sforzando piano). The third measure contains eighth notes and is marked with *sfp*. The fourth measure contains eighth notes and is marked with *sfp*.

BK=21

Musical notation for BK=21, featuring a treble clef, a key signature of one sharp (F#), and a 7/8 time signature. The piece begins with a piano (*p*) dynamic, followed by a crescendo leading to a sforzando (*sfp*) dynamic. The notation includes eighth and sixteenth notes, some with beams, and rests.

BK=22

Musical notation for BK=22, featuring a treble clef, a key signature of one sharp (F#), and a 7/8 time signature. The piece starts with a sforzando (*sfp*) dynamic, followed by a piano (*fp*) dynamic. The notation includes eighth and sixteenth notes, some with beams, and rests.

BK=23

Musical notation for BK=23, featuring a treble clef, a key signature of one sharp (F#), and a 7/8 time signature. The piece begins with a whole rest, followed by eighth and sixteenth notes, some with beams, and rests.

BK=24

Musical notation for BK=24, featuring a treble clef, a key signature of one sharp (F#), and a 7/8 time signature. The piece starts with eighth and sixteenth notes, some with beams, and rests.

BK=25

Musical notation for BK=25, featuring a treble clef, a key signature of one sharp (F#), and a 7/8 time signature. The piece begins with eighth and sixteenth notes, some with beams, and rests.

BK=26

Musical notation for BK=26, featuring a treble clef, a key signature of one sharp (F#), and a 7/8 time signature. The piece starts with a crescendo (*cresc.*), followed by a sforzando (*sf*) dynamic, a piano (*p*) dynamic, another sforzando (*sf*), and a final piano (*p*) dynamic. The notation includes eighth and sixteenth notes, some with beams, and rests.

BK=27

Musical notation for BK=27, featuring a treble clef, a key signature of one sharp (F#), and a 7/8 time signature. The piece begins with a crescendo (*cresc.*) leading to a forte (*f*) dynamic. The notation includes sixteenth-note runs and rests.

BK=28

Musical notation for BK=28, featuring a treble clef, a key signature of one sharp (F#), and a 7/8 time signature. The piece starts with eighth and sixteenth notes, some with beams, and rests.

B

第6番 わたしは愛していました

BK=1

Musical staff for BK=1, bass clef, C major, common time. The staff contains four measures of music. The first measure has a dynamic marking of *f*. The second measure has a dynamic marking of *p*. The third measure has a dynamic marking of *f*. The fourth measure has a dynamic marking of *p*. The letter *B* is written below the first measure.

BK=2

Musical staff for BK=2, bass clef, C major, common time. The staff contains three measures of music, each with a whole note.

BK=3

Musical staff for BK=3, bass clef, C major, common time. The staff contains four measures of music. The first measure is a whole rest. The second and third measures have a dynamic marking of *fp*. The fourth measure has a dynamic marking of *sfp*.

BK=4

Musical staff for BK=4, bass clef, C major, common time. The staff contains four measures of music. The first measure has a dynamic marking of *fp*. The second measure has a dynamic marking of *sfp*. The third measure is a whole rest. The fourth measure has a dynamic marking of *sfp*.

BK=5

Musical staff for BK=5, bass clef, C major, common time. The staff contains four measures of music. The first measure has a dynamic marking of *sfp*. The second measure has a dynamic marking of *sfp*. The third measure has a dynamic marking of *p*. The fourth measure has a dynamic marking of *p*.

BK=6

Musical staff for BK=6, bass clef, C major, common time. The staff contains four measures of music. The first measure has a dynamic marking of *sfp*. The second measure has a dynamic marking of *sfp*. The third measure has a dynamic marking of *sfp*. The fourth measure has a dynamic marking of *sfp*.

BK=7

Musical staff for BK=7, bass clef, C major, common time. The staff contains four measures of music. The first measure is a whole rest. The second measure has a dynamic marking of *sfp*. The third measure has a dynamic marking of *sfp*. The fourth measure has a dynamic marking of *sfp*.

BK=8

Musical staff for BK=8, bass clef, C major, common time. The staff contains four measures of music. The first measure has a dynamic marking of *sfp*. The second measure has a dynamic marking of *sfp*. The third measure has a dynamic marking of *sfp*. The fourth measure has a dynamic marking of *sfp*.

BK=9

Musical staff for BK=9, bass clef, C major, common time. The staff contains four measures of music. The first measure has a dynamic marking of *sfp*. The second measure has a dynamic marking of *sfp*. The third measure has a dynamic marking of *sfp*. The fourth measure has a dynamic marking of *sfp*.

BK=10

Musical staff for BK=10, bass clef, C major, common time. The staff contains four measures of music. The first measure has a dynamic marking of *sfp*. The second measure has a dynamic marking of *sfp*. The third measure has a dynamic marking of *sfp*. The fourth measure has a dynamic marking of *sfp*. The word *cresc.* is written below the fourth measure.

BK=11

Musical staff for BK=11, bass clef, key signature of one sharp (F#). The staff contains four measures of music. The first measure has a half note G2 with dynamic *f*. The second measure has a half note G2 with dynamic *f*. The third measure has a quarter note G2 with dynamic *p*, followed by a quarter rest. The fourth measure has a quarter note G2 with dynamic *f*, followed by a quarter rest.

BK=12

Musical staff for BK=12, bass clef, key signature of one sharp (F#). The staff contains four measures of music, each with a whole note G2 and dynamic *p*.

BK=13

Musical staff for BK=13, bass clef, key signature of one sharp (F#). The staff contains five measures of music. The first four measures each have a whole note G2. The fifth measure has a quarter note G2, followed by a quarter rest.

BK=14

Musical staff for BK=14, bass clef, key signature of one sharp (F#). The staff contains five measures of music. The first measure has a quarter note G2 with dynamic *mf*. The second measure has a whole note G2 with dynamic *p*. The third and fourth measures have quarter notes G2 with quarter rests. The fifth measure has a quarter note G2 with dynamic *mf*.

BK=15

Musical staff for BK=15, bass clef, key signature of one sharp (F#). The staff contains five measures of music. The first measure has a whole note G2 with dynamic *p*. The second measure has a quarter note G2, followed by a quarter rest. The third and fourth measures have quarter notes G2 with quarter rests. The fifth measure has a quarter note G2.

BK=16

Musical staff for BK=16, bass clef, key signature of one sharp (F#). The staff contains five measures of music. The first measure has a quarter note G2, followed by a quarter rest. The second measure has a quarter note G2 with a sharp sign (#) above it, followed by a quarter rest. The third measure has a quarter note G2 with dynamic *sf*, followed by a quarter rest. The fourth measure has a quarter note G2 with dynamic *p*, followed by a quarter rest. The fifth measure has a quarter note G2 with dynamic *p*.

BK=17

Musical staff for BK=17, bass clef, key signature of one sharp (F#). The staff contains five measures of music. The first measure has a quarter note G2 with dynamic *f*. The second measure has a quarter note G2 with dynamic *p*. The third measure has a quarter note G2 with dynamic *f*. The fourth measure has a quarter note G2 with dynamic *p*.

BK=18

Musical staff for BK=18, bass clef, key signature of one sharp (F#). The staff contains five measures of music. The first measure has a whole note G2. The second measure has a whole note G2 with dynamic *sf*. The third and fourth measures have quarter notes G2 with quarter rests. The fifth measure has a whole note G2.

BK=19

Musical staff for BK=19, bass clef, key signature of one sharp (F#). The staff contains five measures of music. The first measure has a quarter note G2. The second measure has a quarter note G2. The third measure has a quarter note G2 with dynamic *sf*. The fourth measure has a quarter note G2 with dynamic *sf*. The fifth measure has a quarter note G2 with dynamic *sf*.

BK=20

Musical staff for BK=20, bass clef, key signature of one sharp (F#). The staff contains five measures of music. The first measure has a quarter note G2. The second measure has a quarter note G2 with dynamic *sfp*. The third measure has a quarter note G2 with dynamic *sfp*. The fourth measure has a quarter note G2 with dynamic *sfp*. The fifth measure has a quarter note G2.

BK=21

Musical notation for BK=21, bass clef, key signature of one sharp (F#). The first measure has a dynamic marking of *p*. The second measure has a dynamic marking of *sfp*. The third measure has a dynamic marking of *sfp*. The notation includes quarter notes, eighth notes, and a half note.

BK=22

Musical notation for BK=22, bass clef, key signature of one sharp (F#). The first measure has a dynamic marking of *sfp*. The second measure has a dynamic marking of *fp*. The third measure has a dynamic marking of *fp*. The notation includes quarter notes, eighth notes, and a half note.

BK=23

Musical notation for BK=23, bass clef, key signature of one sharp (F#). The notation includes quarter notes, eighth notes, and a half note.

BK=24

Musical notation for BK=24, bass clef, key signature of one sharp (F#). The notation includes quarter notes, eighth notes, and a half note.

BK=25

Musical notation for BK=25, bass clef, key signature of one sharp (F#). The notation includes quarter notes, eighth notes, and a half note.

BK=26

Musical notation for BK=26, bass clef, key signature of one sharp (F#). The first measure has a dynamic marking of *cresc.*. The second measure has a dynamic marking of *p*. The third measure has a dynamic marking of *p*. The notation includes quarter notes, eighth notes, and a half note.

BK=27

Musical notation for BK=27, bass clef, key signature of one sharp (F#). The first measure has a dynamic marking of *cresc.*. The second measure has a dynamic marking of *f*. The notation includes quarter notes, eighth notes, and a half note.

BK=28

Musical notation for BK=28, bass clef, key signature of one sharp (F#). The notation includes quarter notes, eighth notes, and a half note.