

Sn

第5番b 軍隊の合唱

BK=1 Allegro

Musical staff for BK=1, starting with a treble clef, a 2/4 time signature, and a dynamic marking of *f*. The staff contains a series of eighth and sixteenth notes, some beamed together, with various articulations and slurs.

BK=2

Musical staff for BK=2, continuing the melodic line with eighth and sixteenth notes and slurs.

BK=3

Musical staff for BK=3, featuring eighth and sixteenth notes with slurs and articulations.

BK=4

Musical staff for BK=4, continuing the rhythmic pattern with eighth and sixteenth notes.

BK=5

Musical staff for BK=5, featuring eighth and sixteenth notes with slurs and articulations.

BK=6

Musical staff for BK=6, ending with a dynamic marking of *p*. The staff contains eighth and sixteenth notes with slurs.

BK=7

Musical staff for BK=7, featuring eighth and sixteenth notes with slurs, a trill (*tr*) over a note, and a dynamic marking of *f* at the end.

BK=8

Musical staff for BK=8, featuring eighth and sixteenth notes with slurs and a dynamic marking of *p*.

BK=9

Musical staff for BK=9, featuring eighth and sixteenth notes with slurs, a trill (*tr*) over a note, and dynamic markings of *f* and *p*.

BK=10

Musical staff for BK=10, featuring eighth and sixteenth notes with slurs and articulations.

BK=11



BK=12



BK=13



BK=14



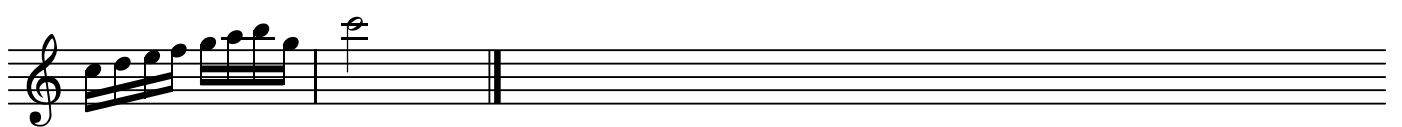
BK=15



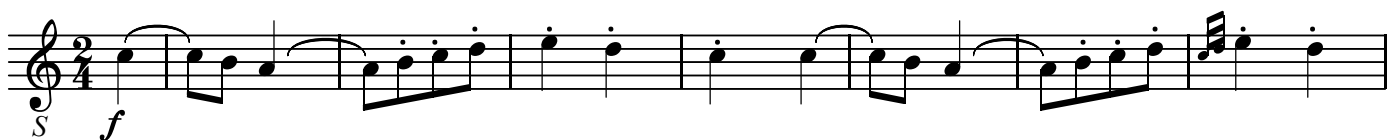
BK=16



BK=17



BK=1



BK=2



BK=3



BK=4



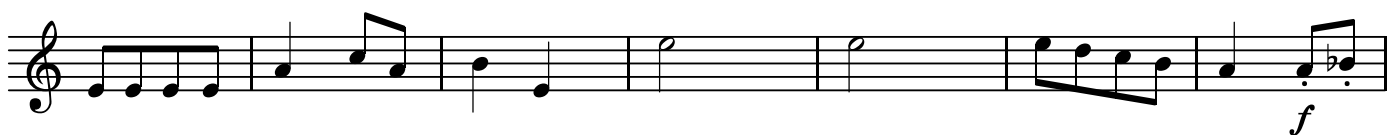
BK=5



BK=6



BK=7



BK=8



BK=9



BK=10



BK=11



BK=12



BK=13



BK=14



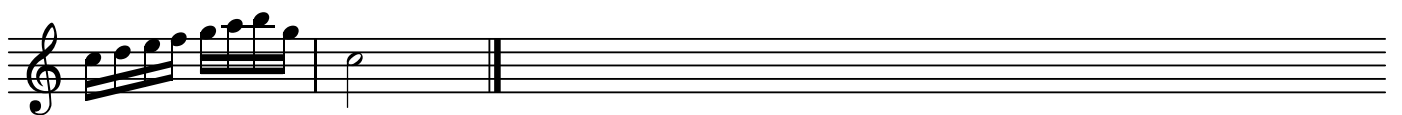
BK=15



BK=16



BK=17



A

第5番b 軍隊の合唱

BK=1

Musical staff for BK=1, starting with a treble clef and a 2/4 time signature. The staff begins with a rest followed by a series of eighth notes. A dynamic marking of *f* is placed below the first measure. The staff ends with a repeat sign.

BK=2

Musical staff for BK=2, starting with a treble clef. The staff contains a series of eighth notes, followed by a dotted quarter note, a quarter note, and a half note with a sharp sign.

BK=3

Musical staff for BK=3, starting with a treble clef. The staff contains a series of eighth notes, followed by a dotted quarter note, a quarter note, and a half note.

BK=4

Musical staff for BK=4, starting with a treble clef. The staff contains a series of eighth notes, followed by a dotted quarter note, a quarter note with a sharp sign, a quarter note, and a half note.

BK=5

Musical staff for BK=5, starting with a treble clef. The staff contains a series of eighth notes, followed by a dotted quarter note, a quarter note, and a half note.

BK=6

Musical staff for BK=6, starting with a treble clef. The staff contains a series of eighth notes, followed by a dotted quarter note, a quarter note with a sharp sign, a quarter note, and a half note. A dynamic marking of *p* is placed below the final measure.

BK=7

Musical staff for BK=7, starting with a treble clef. The staff contains a series of eighth notes, followed by a dotted quarter note, a quarter note, and a half note.

BK=8

Musical staff for BK=8, starting with a treble clef. The staff contains a series of eighth notes, followed by a dotted quarter note, a quarter note, and a half note. A dynamic marking of *p* is placed below the final measure.

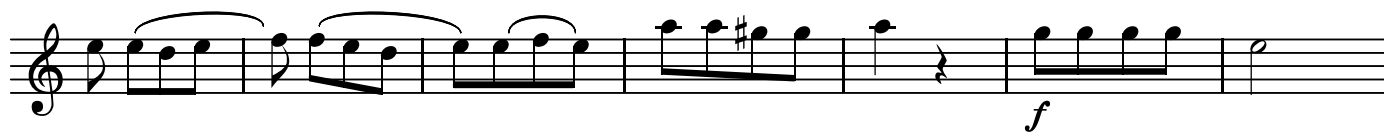
BK=9

Musical staff for BK=9, starting with a treble clef. The staff contains a series of eighth notes, followed by a dotted quarter note, a quarter note, and a half note. A dynamic marking of *p* is placed below the final measure.

BK=10

Musical staff for BK=10, starting with a treble clef. The staff contains a series of eighth notes, followed by a dotted quarter note, a quarter note with a sharp sign, a quarter note, and a half note.

BK=11



BK=12



BK=13



BK=14



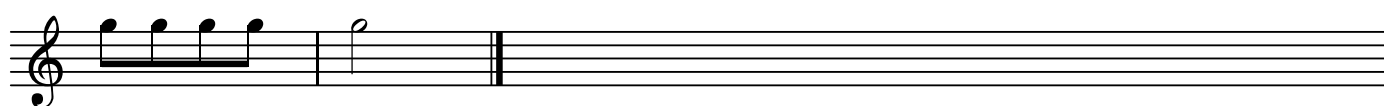
BK=15



BK=16



BK=17



T

第5番b 軍隊の合唱

BK=1

Musical staff for BK=1, starting with a treble clef and a 4/4 time signature. The first measure contains a whole rest. The second measure begins with a dynamic marking of *f*. The staff contains a series of eighth-note patterns.

BK=2

Musical staff for BK=2, continuing the eighth-note patterns from the previous staff.

BK=3

Musical staff for BK=3, featuring a mix of eighth notes and quarter notes.

BK=4

Musical staff for BK=4, continuing the melodic line with eighth notes and quarter notes.

BK=5

Musical staff for BK=5, featuring a mix of eighth notes and quarter notes.

BK=6

Musical staff for BK=6, ending with a dynamic marking of *p*.

BK=7

Musical staff for BK=7, ending with a dynamic marking of *f*.

BK=8

Musical staff for BK=8, featuring a complex rhythmic pattern with eighth notes and chords, starting with a dynamic marking of *p*.

BK=9

Musical staff for BK=9, featuring a complex rhythmic pattern with eighth notes and chords, starting with a dynamic marking of *f* and ending with a dynamic marking of *p*.

BK=10

Musical staff for BK=10, featuring a complex rhythmic pattern with eighth notes and chords.

BK=11



BK=12



BK=13



BK=14



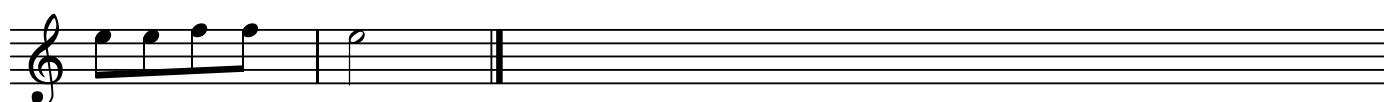
BK=15



BK=16



BK=17





B

第5番b 軍隊の合唱

BK=1

Musical staff for BK=1, bass clef, 2/4 time signature. The staff begins with a dynamic marking of *f* and a tempo marking of *B*. The melody consists of eighth and sixteenth notes, often beamed together in groups.

BK=2

Musical staff for BK=2, bass clef, 2/4 time signature. The melody continues with eighth and sixteenth notes, maintaining the rhythmic pattern from the previous staff.

BK=3

Musical staff for BK=3, bass clef, 2/4 time signature. The melody continues with eighth and sixteenth notes, maintaining the rhythmic pattern from the previous staff.

BK=4

Musical staff for BK=4, bass clef, 2/4 time signature. The melody continues with eighth and sixteenth notes, maintaining the rhythmic pattern from the previous staff.

BK=5

Musical staff for BK=5, bass clef, 2/4 time signature. The melody continues with eighth and sixteenth notes, maintaining the rhythmic pattern from the previous staff.

BK=6

Musical staff for BK=6, bass clef, 2/4 time signature. The melody continues with eighth and sixteenth notes, maintaining the rhythmic pattern from the previous staff.

BK=7

Musical staff for BK=7, bass clef, 2/4 time signature. The melody continues with eighth and sixteenth notes, maintaining the rhythmic pattern from the previous staff.

BK=8

Musical staff for BK=8, bass clef, 2/4 time signature. The staff begins with a dynamic marking of *p*. The melody continues with eighth and sixteenth notes, maintaining the rhythmic pattern from the previous staff. A dynamic marking of *f* appears at the start of the second measure, and a *p* marking appears at the start of the fourth measure.

BK=9

Musical staff for BK=9, bass clef, 2/4 time signature. The staff begins with a dynamic marking of *f*. The melody continues with eighth and sixteenth notes, maintaining the rhythmic pattern from the previous staff. A dynamic marking of *p* appears at the start of the fourth measure.

BK=10

Musical staff for BK=10, bass clef, 2/4 time signature. The melody continues with eighth and sixteenth notes, maintaining the rhythmic pattern from the previous staff.

BK=11

Musical notation for BK=11, featuring a bass clef and a series of notes with stems, including a dynamic marking *f* (forte) near the end of the staff.

BK=12

Musical notation for BK=12, featuring a bass clef and a series of notes with stems, including a dynamic marking *f* (forte) near the end of the staff.

BK=13

Musical notation for BK=13, featuring a bass clef and a series of notes with stems, including a dynamic marking *f* (forte) near the end of the staff.

BK=14

Musical notation for BK=14, featuring a bass clef and a series of notes with stems, including a dynamic marking *f* (forte) near the end of the staff.

BK=15

Musical notation for BK=15, featuring a bass clef and a series of notes with stems, including a dynamic marking *f* (forte) near the end of the staff.

BK=16

Musical notation for BK=16, featuring a bass clef and a series of notes with stems, including a dynamic marking *f* (forte) near the end of the staff.

BK=17

Musical notation for BK=17, featuring a bass clef and a series of notes with stems, including a dynamic marking *f* (forte) near the end of the staff.