

Sn

第5番a 行進曲

BK=1

Musical staff for BK=1, starting with a treble clef and a dynamic marking of *f*. The staff contains a sequence of eighth and sixteenth notes with slurs.

BK=2

Musical staff for BK=2, continuing the melodic line with eighth and sixteenth notes, ending with a dynamic marking of *p*.

BK=3

Musical staff for BK=3, featuring a triplet of eighth notes and a dynamic marking of *f*. The staff concludes with a double bar line and repeat dots.

BK=4

Musical staff for BK=4, including a triplet of eighth notes and a dynamic marking of *f*.

BK=5

Musical staff for BK=5, featuring two trills marked *tr* and dynamic markings of *p* and *f*.

BK=6

Musical staff for BK=6, consisting of eighth and sixteenth notes with slurs.

BK=7

Musical staff for BK=7, featuring two trills marked *tr* and a dynamic marking of *f*. The staff concludes with a double bar line and repeat dots.

BK=1



BK=2



BK=3



BK=4



BK=5



BK=6



BK=7



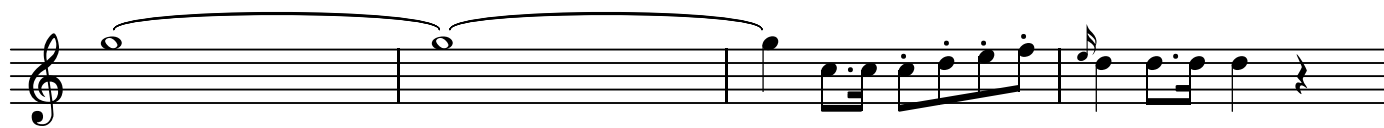
A

第5番a 行進曲

BK=1



BK=2



BK=3



BK=4



BK=5



BK=6



BK=7



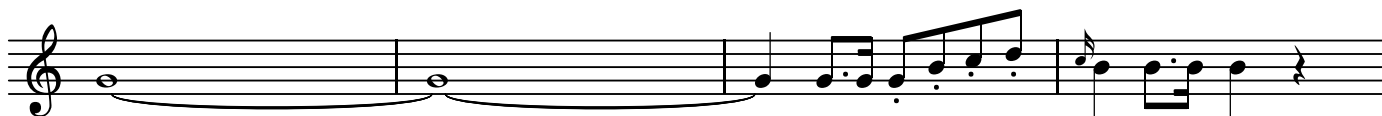
T

第5番a 行進曲

BK=1



BK=2



BK=3



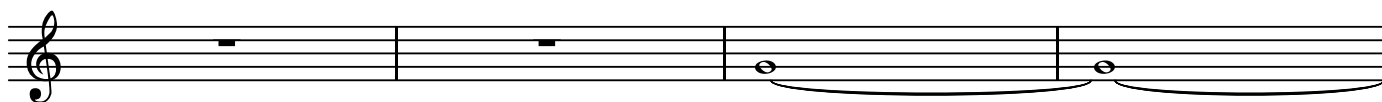
BK=4



BK=5



BK=6



BK=7



B

第5番a 行進曲

BK=1

Musical staff for BK=1, bass clef, common time. The staff contains five measures of music. The first measure is a whole rest. The second measure starts with a forte (*f*) dynamic and contains four quarter notes. The third, fourth, and fifth measures each contain four quarter notes. A *B* marking is present below the first measure.

BK=2

Musical staff for BK=2, bass clef, common time. The staff contains four measures of music, each consisting of four quarter notes.

BK=3

Musical staff for BK=3, bass clef, common time. The staff contains four measures. The first two measures are whole rests. The third measure starts with a forte (*f*) dynamic and contains four quarter notes. The fourth measure contains a half note followed by a quarter rest. The staff ends with a repeat sign.

BK=4

Musical staff for BK=4, bass clef, common time. The staff contains four measures of music, each consisting of four quarter notes.

BK=5

Musical staff for BK=5, bass clef, common time. The staff contains four measures. The first two measures are whole rests. The third measure starts with a forte (*f*) dynamic and contains four quarter notes. The fourth measure contains a half note followed by a quarter rest.

BK=6

Musical staff for BK=6, bass clef, common time. The staff contains four measures, each consisting of a whole rest.

BK=7

Musical staff for BK=7, bass clef, common time. The staff contains four measures. The first measure starts with a forte (*f*) dynamic and contains four quarter notes. The second, third, and fourth measures each contain four quarter notes. The staff ends with a repeat sign.

GB

第5番a 行進曲

BK=1

Musical staff for BK=1, bass clef, common time. The staff contains four measures of music. The first measure has a whole rest. The second measure has a half note G with a dynamic marking *f*. The third and fourth measures each have a half note G with a dynamic marking *f*.

BK=2

Musical staff for BK=2, bass clef, common time. The staff contains four measures of music, each with a half note G.

BK=3

Musical staff for BK=3, bass clef, common time. The staff contains four measures of music. The first measure has a whole rest. The second measure has a whole rest. The third measure has a half note G with a dynamic marking *f*. The fourth measure has a half note G. The staff ends with a double bar line and repeat dots.

BK=4

Musical staff for BK=4, bass clef, common time. The staff contains four measures of music, each with a half note G.

BK=5

Musical staff for BK=5, bass clef, common time. The staff contains four measures of music. The first measure has a whole rest. The second measure has a whole rest. The third measure has a half note G with a dynamic marking *f*. The fourth measure has a half note G.

BK=6

Musical staff for BK=6, bass clef, common time. The staff contains four measures of music, each with a whole rest.

BK=7

Musical staff for BK=7, bass clef, common time. The staff contains four measures of music. The first measure has a half note G with a dynamic marking *f*. The second and third measures each have a half note G. The fourth measure has a half note G. The staff ends with a double bar line and repeat dots.