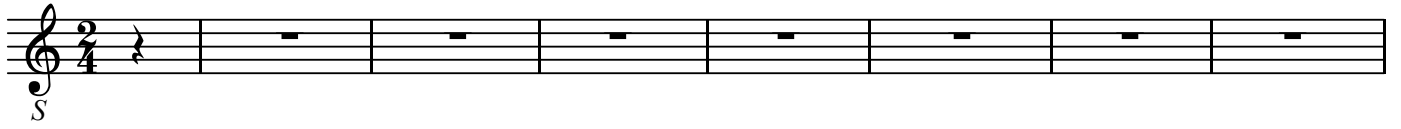
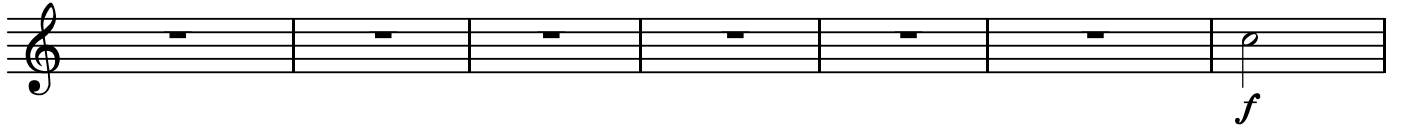
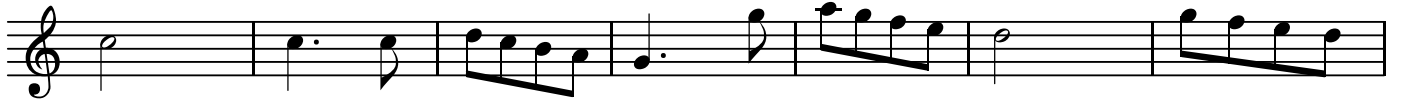


BK=1
Allegro vivace

BK=2



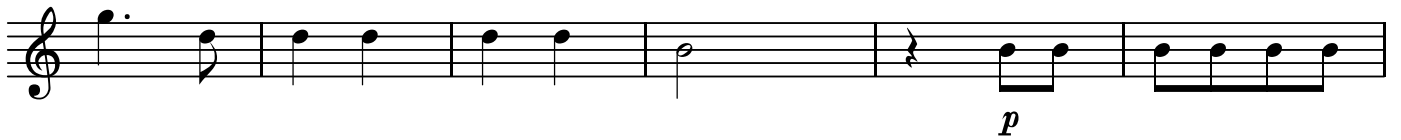
BK=3



BK=4



BK=5



BK=6



BK=7



BK=8



BK=9



BK=10



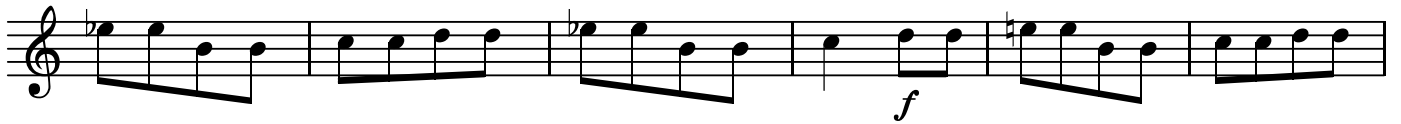
BK=11



BK=12



BK=13



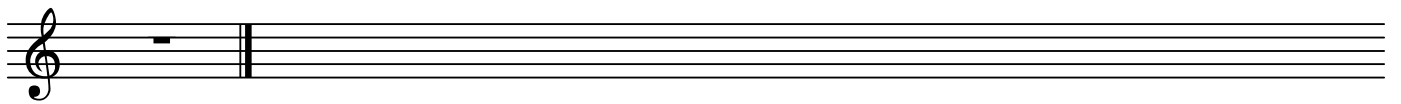
BK=14



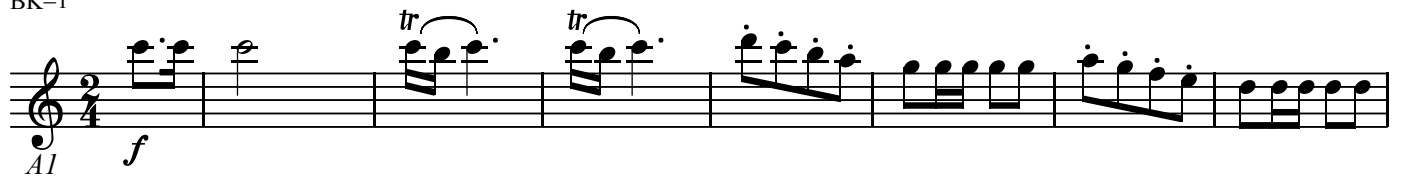
BK=15



BK=16



BK=1



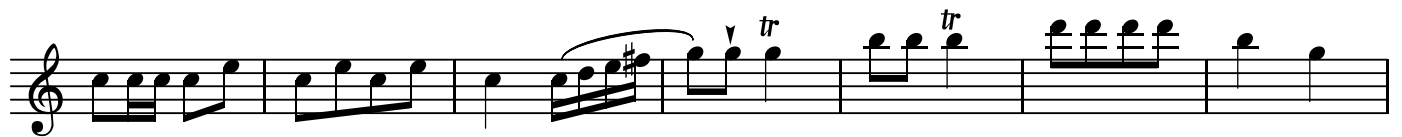
BK=2



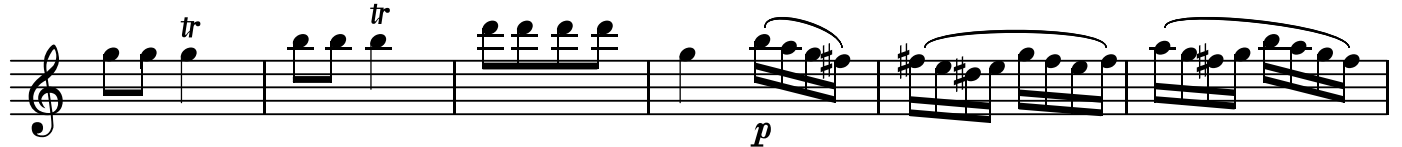
BK=3



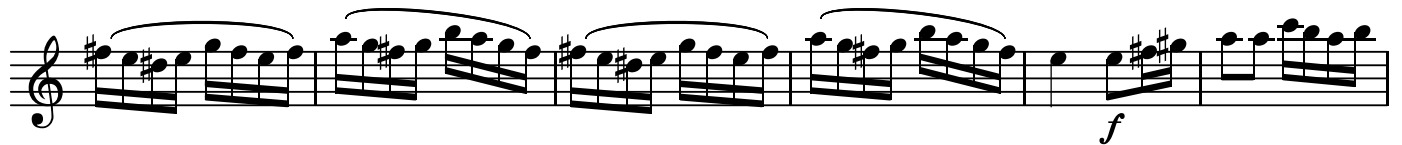
BK=4



BK=5



BK=6



BK=7



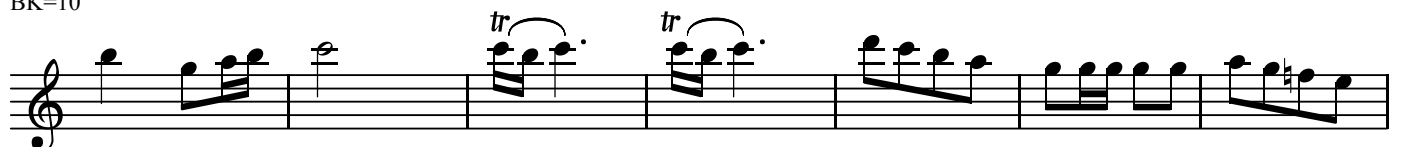
BK=8



BK=9



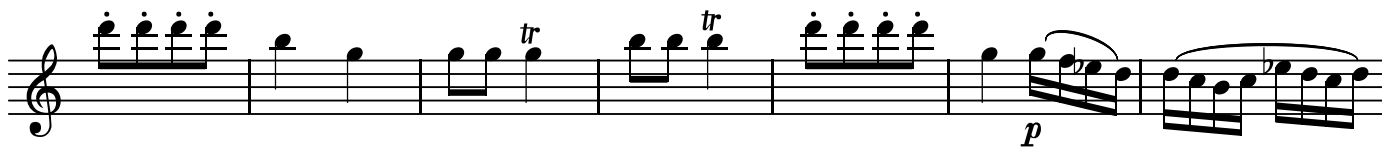
BK=10



BK=11



BK=12



BK=13



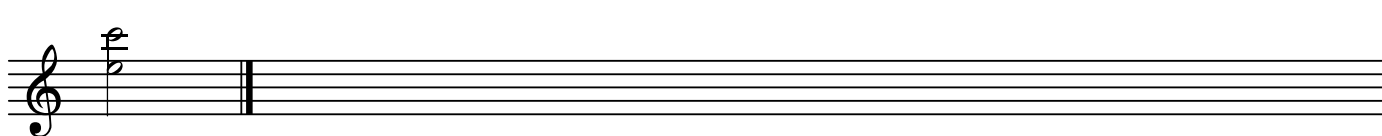
BK=14



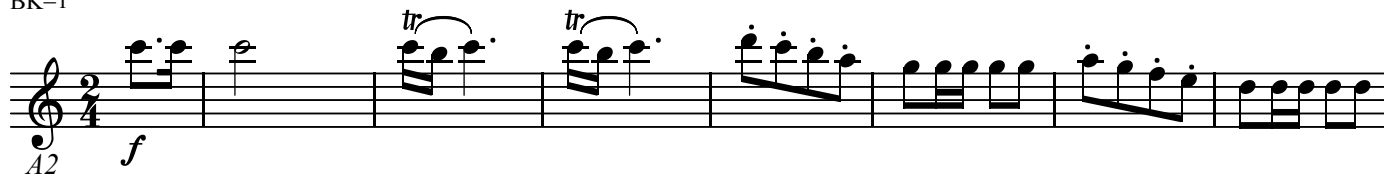
BK=15



BK=16



BK=1



BK=2



BK=3



BK=4



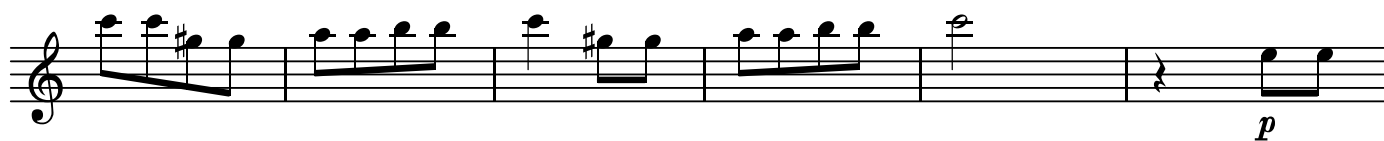
BK=5



BK=6



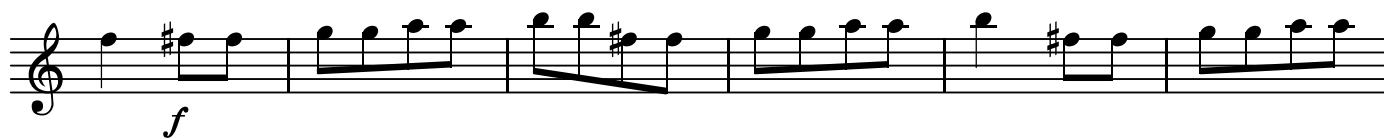
BK=7



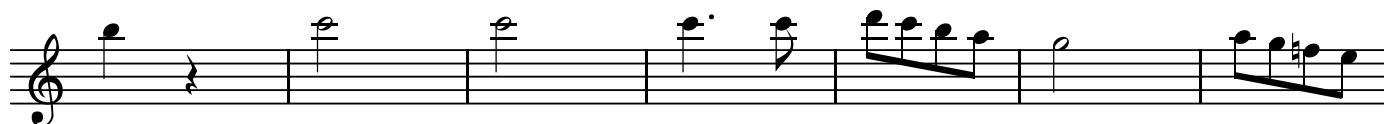
BK=8



BK=9



BK=10



BK=11



BK=12



BK=13



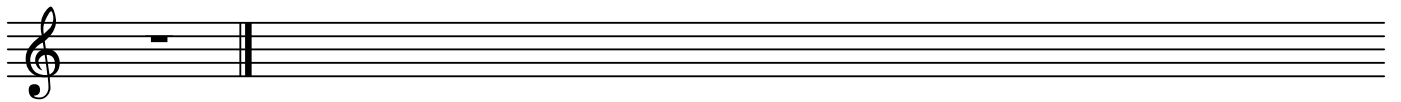
BK=14



BK=15



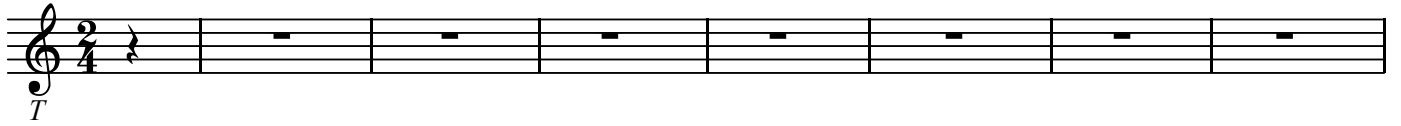
BK=16



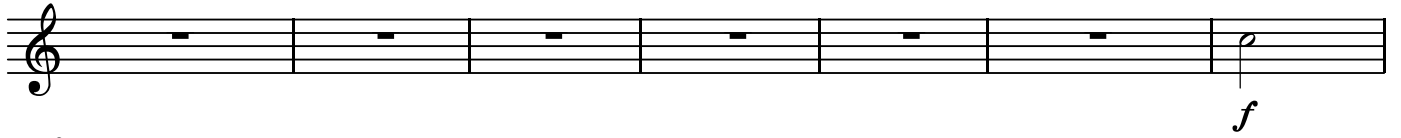
T

第21番b セリム太守万歳！

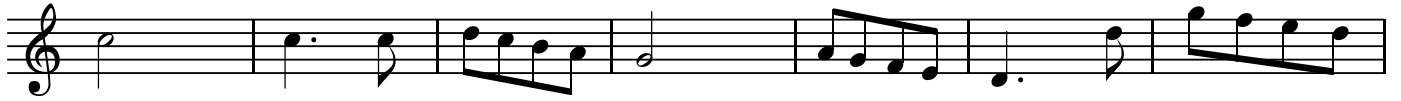
BK=1



BK=2



BK=3



BK=4



BK=5



BK=6



BK=7



BK=8



BK=9



BK=10



BK=11



BK=12



BK=13



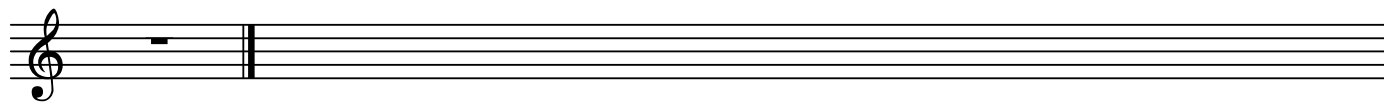
BK=14



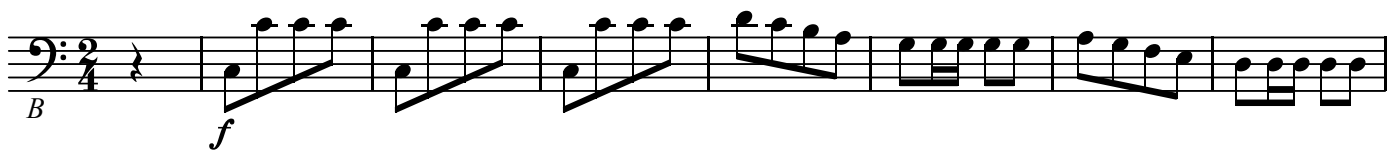
BK=15



BK=16



BK=1



BK=2



BK=3



BK=4



BK=5



BK=6



BK=7



BK=8



BK=9



BK=10



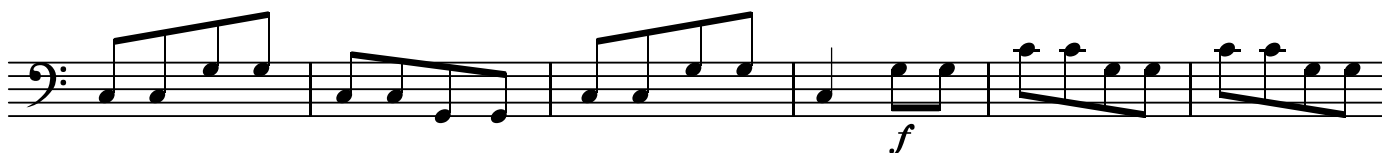
BK=11



BK=12



BK=13



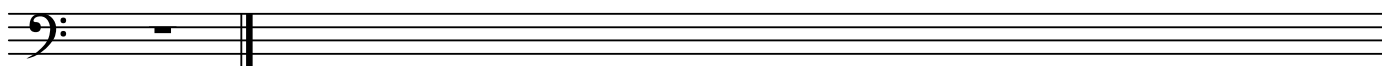
BK=14



BK=15



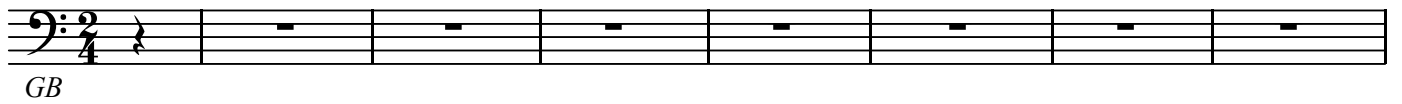
BK=16



GB

第21番b セリム太守万歳！

BK=1



Musical staff for BK=1, showing a bass clef, a 2/4 time signature, and a key signature of one flat. The staff contains a whole rest for the first seven measures.

BK=2



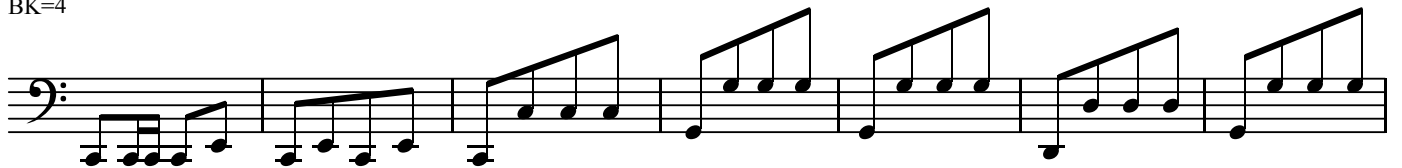
Musical staff for BK=2, showing a bass clef and a key signature of one flat. The staff contains a whole rest for the first measure, followed by eighth-note patterns in the next three measures, a quarter rest in the fifth measure, and a final eighth-note pattern in the sixth measure. A dynamic marking of *f* is present at the end.

BK=3



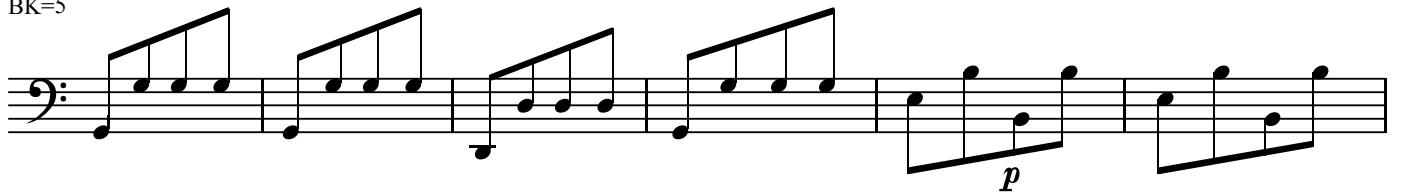
Musical staff for BK=3, showing a bass clef and a key signature of one flat. The staff contains eighth-note patterns throughout.

BK=4



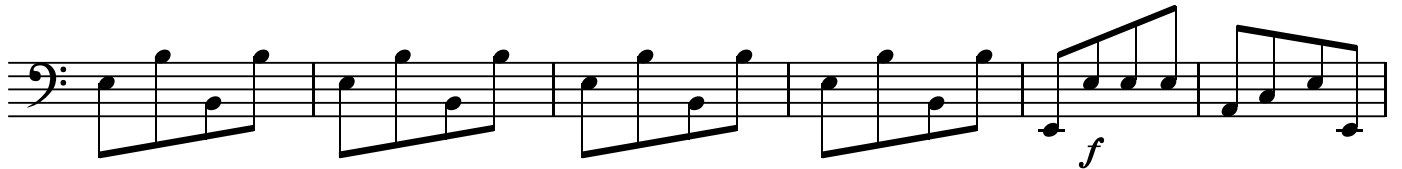
Musical staff for BK=4, showing a bass clef and a key signature of one flat. The staff contains eighth-note patterns throughout.

BK=5



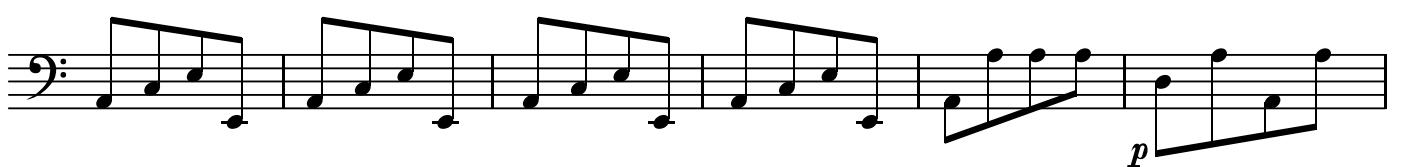
Musical staff for BK=5, showing a bass clef and a key signature of one flat. The staff contains eighth-note patterns throughout. A dynamic marking of *p* is present at the end.

BK=6



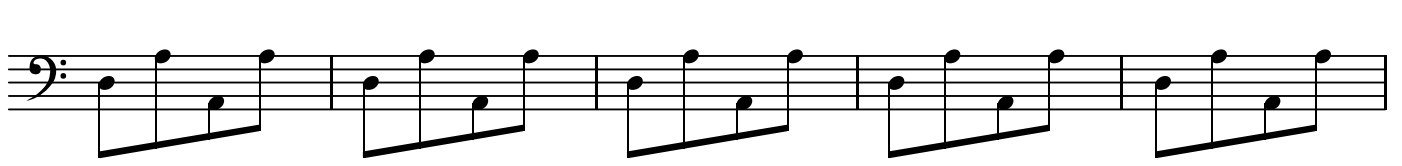
Musical staff for BK=6, showing a bass clef and a key signature of one flat. The staff contains eighth-note patterns throughout. A dynamic marking of *f* is present at the end.

BK=7



Musical staff for BK=7, showing a bass clef and a key signature of one flat. The staff contains eighth-note patterns throughout. A dynamic marking of *p* is present at the end.

BK=8



Musical staff for BK=8, showing a bass clef and a key signature of one flat. The staff contains eighth-note patterns throughout.

BK=9



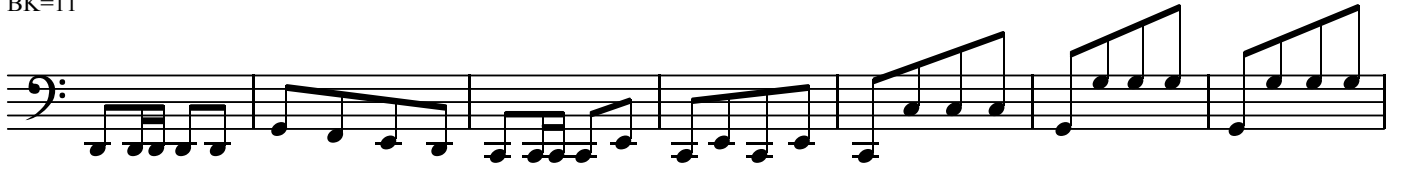
Musical staff for BK=9, showing a bass clef and a key signature of one flat. The staff contains eighth-note patterns throughout. A dynamic marking of *f* is present at the beginning.

BK=10

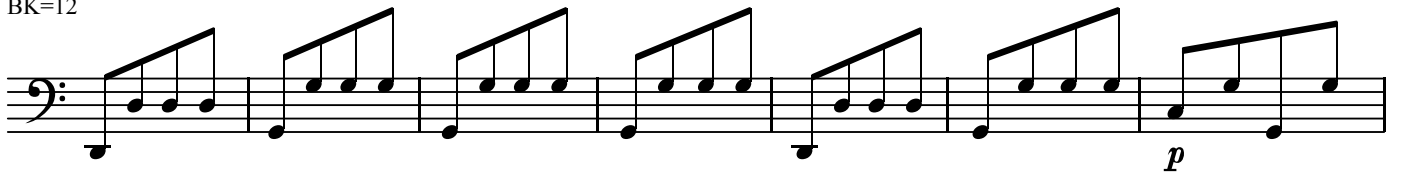


Musical staff for BK=10, showing a bass clef and a key signature of one flat. The staff contains eighth-note patterns throughout.

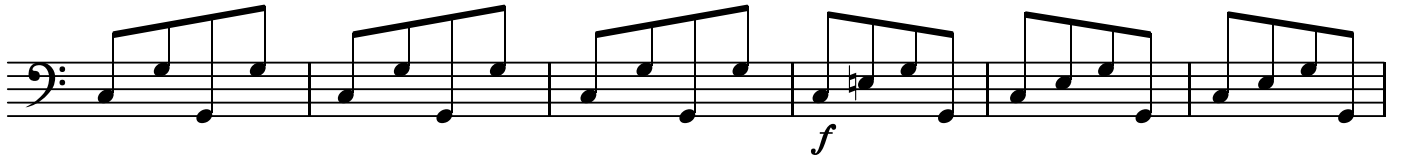
BK=11



BK=12



BK=13



BK=14



BK=15



BK=16

