

第21番a あなたのご恩は忘れません

BK=1

Andante



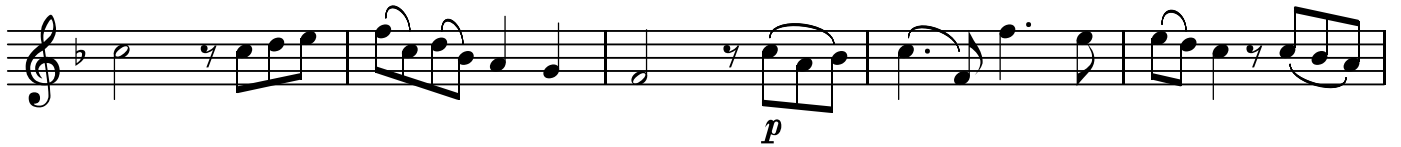
BK=2



BK=3



BK=4



BK=5



BK=6



BK=7



BK=8



BK=9



BK=10



BK=11

Musical notation for BK=11, featuring a treble clef, a key signature of one flat, and a melody with slurs and a dynamic marking of *p*.

BK=12

Musical notation for BK=12, featuring a treble clef, a key signature of one flat, and a melody with slurs.

BK=13

Musical notation for BK=13, featuring a treble clef, a key signature of one flat, and a melody with slurs. The tempo marking *Adagietto* is present.

BK=14

Musical notation for BK=14, featuring a treble clef, a key signature of one flat, and a staff with rests. The tempo marking *Allegretto* is present.

BK=15

Musical notation for BK=15, featuring a treble clef, a key signature of one flat, and a staff with rests. The tempo marking *Allegro assai* is present.

BK=16

Musical notation for BK=16, featuring a treble clef, a key signature of one flat, and a staff with rests. A dynamic marking of *p* is present at the end.

BK=17

Musical notation for BK=17, featuring a treble clef, a key signature of one flat, and a melody of eighth notes. A dynamic marking of *cresc.* is present.

BK=18

Musical notation for BK=18, featuring a treble clef, a key signature of one flat, and a melody of eighth notes. A dynamic marking of *cresc.* is present.

BK=19

Musical notation for BK=19, featuring a treble clef, a key signature of one flat, and a melody with slurs. The tempo marking *Andante* is present. Dynamic markings of *p* and *f* are used.

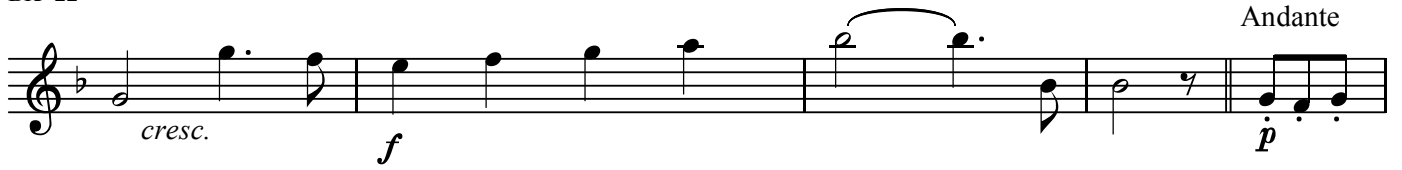
BK=20

Musical notation for BK=20, featuring a treble clef, a key signature of one flat, and a melody with slurs. Dynamic markings of *f* and *p* are used.

BK=21



BK=22



BK=23



BK=24



A1

第21番a あなたのご恩は忘れません

BK=1

Musical staff for BK=1, featuring a treble clef, a key signature of one flat (B-flat), and a common time signature (C). The staff contains a melodic line with dynamics *f* and *p*. The notation includes eighth and sixteenth notes, some with slurs and accents.

BK=2

Musical staff for BK=2, continuing the melodic line with various rhythmic patterns and slurs.

BK=3

Musical staff for BK=3, featuring a trill (*tr*) and a dynamic marking of *f*.

BK=4

Musical staff for BK=4, featuring a trill (*tr*) and a dynamic marking of *p*.

BK=5

Musical staff for BK=5, continuing the melodic line with slurs and accents.

BK=6

Musical staff for BK=6, featuring a trill (*tr*) and a dynamic marking of *f*.

BK=7

Musical staff for BK=7, featuring a trill (*tr*) and a dynamic marking of *f*.

BK=8

Musical staff for BK=8, featuring a dynamic marking of *p*.

BK=9

Musical staff for BK=9, featuring a dynamic marking of *f*.

BK=10

Musical staff for BK=10, featuring a trill (*tr*) and a dynamic marking of *f*.

BK=11

Musical staff for BK=11, featuring a treble clef, a key signature of one flat, and a dynamic marking of *p*. The staff contains a melodic line with eighth and sixteenth notes, some with slurs and accents.

BK=12

Musical staff for BK=12, featuring a treble clef, a key signature of one flat, and a melodic line with eighth and sixteenth notes, some with slurs and accents.

BK=13

Musical staff for BK=13, featuring a treble clef, a key signature of one flat, and a dynamic marking of *tr*. The staff contains a melodic line with eighth and sixteenth notes, some with slurs and accents.

BK=14

Musical staff for BK=14, featuring a treble clef, a key signature of one flat, and a melodic line with eighth and sixteenth notes, some with slurs and accents.

BK=15

Musical staff for BK=15, featuring a treble clef, a key signature of one flat, and a dynamic marking of *mf*. The staff contains a melodic line with eighth and sixteenth notes, some with slurs and accents.

BK=16

Musical staff for BK=16, featuring a treble clef, a key signature of one flat, and a melodic line with eighth and sixteenth notes, some with slurs and accents.

BK=17

Musical staff for BK=17, featuring a treble clef, a key signature of one flat, and a dynamic marking of *cresc.*. The staff contains a melodic line with eighth and sixteenth notes, some with slurs and accents.

BK=18

Musical staff for BK=18, featuring a treble clef, a key signature of one flat, and a melodic line with eighth and sixteenth notes, some with slurs and accents.

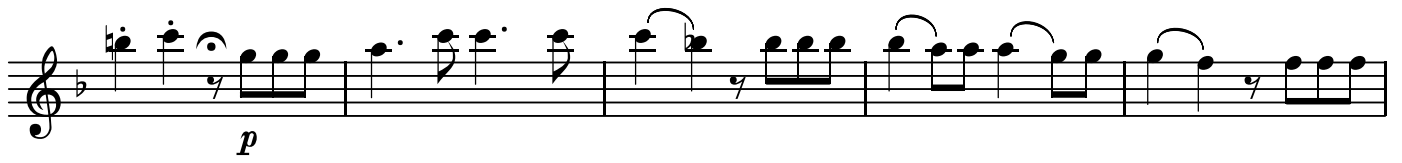
BK=19

Musical staff for BK=19, featuring a treble clef, a key signature of one flat, and a dynamic marking of *p*, *f*, *p*, *f*, *p*. The staff contains a melodic line with eighth and sixteenth notes, some with slurs and accents.

BK=20

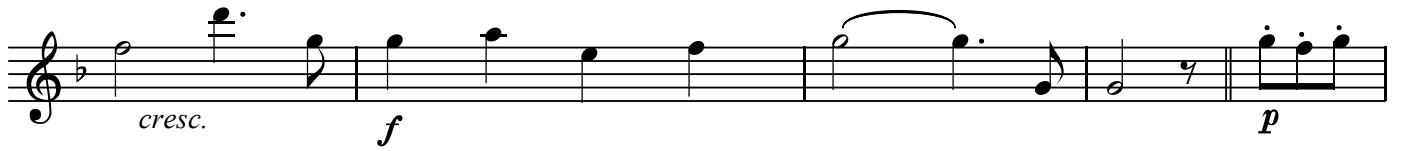
Musical staff for BK=20, featuring a treble clef, a key signature of one flat, and a dynamic marking of *f*, *p*, *f*, *p*, *f*. The staff contains a melodic line with eighth and sixteenth notes, some with slurs and accents.

BK=21



Musical notation for BK=21, featuring a treble clef, a key signature of one flat (B-flat), and a 7/8 time signature. The piece begins with a piano (*p*) dynamic. The melody consists of eighth and sixteenth notes, with some notes beamed together and others marked with accents. There are several slurs over groups of notes.

BK=22




Musical notation for BK=22, featuring a treble clef, a key signature of one flat (B-flat), and a 7/8 time signature. The piece starts with a *cresc.* (crescendo) marking, followed by a forte (*f*) dynamic. It concludes with a piano (*p*) dynamic. The melody includes quarter notes, eighth notes, and a final triplet of eighth notes.

BK=23



Musical notation for BK=23, featuring a treble clef, a key signature of one flat (B-flat), and a 7/8 time signature. The piece includes a trill (*tr*) marking over a group of notes. The dynamic is marked as forte (*f*). The melody is highly rhythmic, featuring many beamed eighth and sixteenth notes.

BK=24



Musical notation for BK=24, featuring a treble clef, a key signature of one flat (B-flat), and a 7/8 time signature. The piece begins with a trill (*tr*) marking. The melody is composed of eighth and sixteenth notes, with some notes beamed together. The piece ends with a final note and a double bar line.

BK=11

Musical staff for BK=11, featuring a treble clef, a key signature of one flat (B-flat), and a common time signature. The staff contains a sequence of notes and rests, with a dynamic marking of *p* (piano) below the staff.

BK=12

Musical staff for BK=12, featuring a treble clef, a key signature of one flat (B-flat), and a common time signature. The staff contains a sequence of notes and rests.

BK=13

Musical staff for BK=13, featuring a treble clef, a key signature of one flat (B-flat), and a common time signature. The staff contains a sequence of notes and rests.

BK=14

Musical staff for BK=14, featuring a treble clef, a key signature of one flat (B-flat), and a common time signature. The staff contains a sequence of notes and rests, including a dynamic marking of *f* (forte).

BK=15

Musical staff for BK=15, featuring a treble clef, a key signature of one flat (B-flat), and a common time signature. The staff contains a sequence of notes and rests, with dynamic markings of *fp* (fortissimo piano) and *p* (piano).

BK=16

Musical staff for BK=16, featuring a treble clef, a key signature of one flat (B-flat), and a common time signature. The staff contains a sequence of notes and rests, including a dynamic marking of *f* (forte).

BK=17

Musical staff for BK=17, featuring a treble clef, a key signature of one flat (B-flat), and a common time signature. The staff contains a sequence of notes and rests.

BK=18

Musical staff for BK=18, featuring a treble clef, a key signature of one flat (B-flat), and a common time signature. The staff contains a sequence of notes and rests, ending with a double bar line and a common time signature.

BK=19

Musical staff for BK=19, featuring a treble clef, a key signature of one flat (B-flat), and a common time signature. The staff contains a sequence of notes and rests, with dynamic markings of *fp* (fortissimo piano).

BK=20

Musical staff for BK=20, featuring a treble clef, a key signature of one flat (B-flat), and a common time signature. The staff contains a sequence of notes and rests, with dynamic markings of *fp* (fortissimo piano) and *f* (forte).

BK=21

Musical notation for BK=21, featuring a treble clef, a key signature of one flat (B-flat), and a dynamic marking of *p* (piano). The notation includes a series of eighth and sixteenth notes, with some notes beamed together and others marked with accents.

BK=22

Musical notation for BK=22, featuring a treble clef, a key signature of one flat (B-flat), and dynamic markings of *cresc.* (crescendo), *f* (forte), and *p* (piano). The notation includes a series of eighth and sixteenth notes, with some notes beamed together and others marked with accents.

BK=23

Musical notation for BK=23, featuring a treble clef, a key signature of one flat (B-flat), and a dynamic marking of *f* (forte). The notation includes a series of eighth and sixteenth notes, with some notes beamed together and others marked with accents.

BK=24

Musical notation for BK=24, featuring a treble clef, a key signature of one flat (B-flat), and a dynamic marking of *f* (forte). The notation includes a series of eighth and sixteenth notes, with some notes beamed together and others marked with accents.

T

第21番a あなたのご恩は忘れません

BK=1

Musical staff BK=1, Treble clef, C major, 4/4 time. The staff contains five measures. The first measure has a whole rest. The second measure starts with a quarter rest followed by a half note G4. The third measure has a half note G4 and a quarter note A4. The fourth measure has a quarter note G4, a quarter note F4, and a quarter note E4. The fifth measure has a quarter note D4, a quarter note C4, and a quarter note B3. Dynamics: *f* under the first measure, *p* under the second measure.

BK=2

Musical staff BK=2, Treble clef, C major, 4/4 time. The staff contains five measures. The first three measures have whole rests. The fourth measure has a whole note G4. The fifth measure has a quarter note G4, a quarter note A4, and a quarter note B4.

BK=3

Musical staff BK=3, Treble clef, C major, 4/4 time. The staff contains five measures. The first measure has a whole note G4. The second measure has a whole note A4. The third measure has a quarter note G4, a quarter note F4, and a quarter note E4. The fourth measure has a quarter note D4, a quarter note C4, and a quarter note B3. The fifth measure has a quarter note G4, a quarter note A4, and a quarter note B4. Dynamics: *f* under the fifth measure.

BK=4

Musical staff BK=4, Treble clef, C major, 4/4 time. The staff contains five measures. The first measure has a whole note G4. The second measure has a quarter note G4, a quarter note A4, and a quarter note B4. The third measure has a whole note G4. The fourth measure starts with a quarter rest followed by a half note G4. The fifth measure has a half note G4 and a quarter note A4. Dynamics: *p* under the fourth measure.

BK=5

Musical staff BK=5, Treble clef, C major, 4/4 time. The staff contains five measures. The first measure has a whole note G4. The second measure has a quarter note G4, a quarter note A4, and a quarter note B4. The third, fourth, and fifth measures have whole rests.

BK=6

Musical staff BK=6, Treble clef, C major, 4/4 time. The staff contains five measures. The first measure has a whole note G4. The second measure starts with a quarter rest followed by a half note G4. The third measure has a whole note A4. The fourth measure has a whole note G4. The fifth measure has a quarter note G4, a quarter note A4, and a quarter note B4.

BK=7

Musical staff BK=7, Treble clef, C major, 4/4 time. The staff contains five measures. The first measure has a quarter note G4, a quarter note A4, and a quarter note B4. The second measure has a whole note G4. The third measure has a whole note A4. The fourth measure has a quarter note G4, a quarter note F4, and a quarter note E4. The fifth measure has a quarter note D4, a quarter note C4, and a quarter note B3. Dynamics: *f* under the first measure, *p* under the fifth measure.

BK=8

Musical staff BK=8, Treble clef, C major, 4/4 time. The staff contains five measures. The first measure has a quarter note G4, a quarter note A4, and a quarter note B4. The second measure has a quarter note G4, a quarter note A4, and a quarter note B4. The third measure has a whole note G4. The fourth measure has a quarter note G4, a quarter note A4, and a quarter note B4. The fifth measure has a whole rest.

BK=9

Musical staff BK=9, Treble clef, C major, 4/4 time. The staff contains five measures. The first measure has a whole rest. The second measure has a quarter note G4, a quarter note A4, and a quarter note B4. The third measure has a quarter note G4, a quarter note A4, and a quarter note B4. The fourth measure has a whole rest. The fifth measure has a whole rest.

BK=10

Musical staff BK=10, Treble clef, C major, 4/4 time. The staff contains five measures. The first three measures have whole rests. The fourth measure has a whole note G4. The fifth measure has a whole note A4. Dynamics: *f* under the fourth measure.

BK=11

Musical notation for BK=11, featuring a treble clef, a key signature of one flat, and a melody with a dynamic marking of *p* (piano).

BK=12

Musical notation for BK=12, featuring a treble clef, a key signature of one flat, and a melody with several rests.

BK=13

Musical notation for BK=13, featuring a treble clef, a key signature of one flat, and a melody with a dynamic marking of *p* (piano).

BK=14

Musical notation for BK=14, featuring a treble clef, a key signature of one flat, and a melody with a dynamic marking of *p* (piano).

BK=15

Musical notation for BK=15, featuring a treble clef, a key signature of one flat, and a melody with dynamic markings of *fp* (fortissimo piano) and *p* (piano).

BK=16

Musical notation for BK=16, featuring a treble clef, a key signature of one flat, and a melody with a dynamic marking of *p* (piano).

BK=17

Musical notation for BK=17, featuring a treble clef, a key signature of one flat, and a melody with a dynamic marking of *cresc.* (crescendo).

BK=18

Musical notation for BK=18, featuring a treble clef, a key signature of one flat, and a melody with a dynamic marking of *cresc.* (crescendo).

BK=19

Musical notation for BK=19, featuring a treble clef, a key signature of one flat, and a melody with dynamic markings of *fp* (fortissimo piano).

BK=20

Musical notation for BK=20, featuring a treble clef, a key signature of one flat, and a melody with dynamic markings of *fp* (fortissimo piano) and *f* (fortissimo).

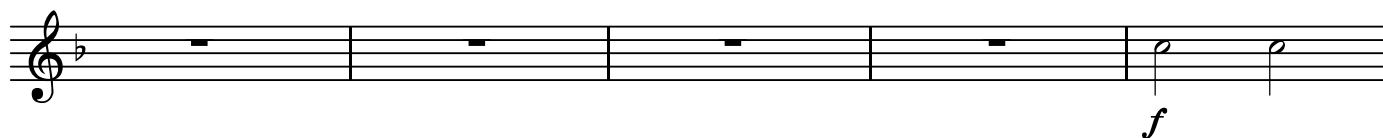
BK=21



BK=22



BK=23



BK=24



BK=21

Musical notation for BK=21, bass clef, one flat. The piece begins with a piano (*p*) dynamic. The first measure contains a half note G2, a quarter note A2, and a quarter note Bb2. The second measure has a quarter rest, a quarter note G2, and a quarter note F2. The third measure has a half note G2. The fourth measure has a quarter note G2, a quarter note F2, and a quarter note E2. The fifth measure has a quarter note D2, a quarter note C2, and a quarter note B1. The sixth measure has a quarter note B1, a quarter note A1, and a quarter note G1. The seventh measure has a quarter note F1, a quarter note E1, and a quarter note D1. The eighth measure has a quarter note C1, a quarter note B0, and a quarter note A0. The piece ends with a double bar line.

BK=22

Musical notation for BK=22, bass clef, one flat. The piece begins with a *cresc.* (crescendo) marking. The first measure has a half note G2. The second measure has a quarter note G2, a quarter note F2, and a quarter note E2. The third measure has a quarter note D2, a quarter note C2, and a quarter note B1. The fourth measure has a quarter note A1, a quarter note G1, and a quarter note F1. The fifth measure has a quarter note E1, a quarter note D1, and a quarter note C1. The sixth measure has a quarter note B0, a quarter note A0, and a quarter note G0. The seventh measure has a quarter note F0, a quarter note E0, and a quarter note D0. The eighth measure has a quarter note C0, a quarter note B0, and a quarter note A0. The piece ends with a double bar line.

BK=23

Musical notation for BK=23, bass clef, one flat. The piece begins with a piano (*p*) dynamic. The first two measures are whole rests. The third measure has a quarter note G2, a quarter note F2, and a quarter note E2. The fourth measure has a quarter note D2, a quarter note C2, and a quarter note B1. The fifth measure has a quarter note A1, a quarter note G1, and a quarter note F1. The sixth measure has a quarter note E1, a quarter note D1, and a quarter note C1. The seventh measure has a quarter note B0, a quarter note A0, and a quarter note G0. The eighth measure has a quarter note F0, a quarter note E0, and a quarter note D0. The piece ends with a double bar line.

BK=24

Musical notation for BK=24, bass clef, one flat. The piece begins with a piano (*p*) dynamic. The first measure has a quarter note G2, a quarter note F2, and a quarter note E2. The second measure has a quarter note D2, a quarter note C2, and a quarter note B1. The third measure has a quarter note A1, a quarter note G1, and a quarter note F1. The fourth measure has a quarter note E1, a quarter note D1, and a quarter note C1. The fifth measure has a quarter note B0, a quarter note A0, and a quarter note G0. The sixth measure has a quarter note F0, a quarter note E0, and a quarter note D0. The seventh measure has a quarter note C0, a quarter note B0, and a quarter note A0. The eighth measure has a quarter note G0, a quarter note F0, and a quarter note E0. The piece ends with a double bar line.