



BK=11



BK=12



BK=13



BK=14



BK=15



BK=16



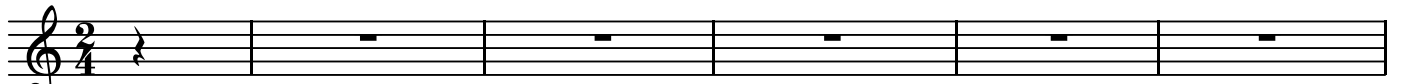
BK=17



A1

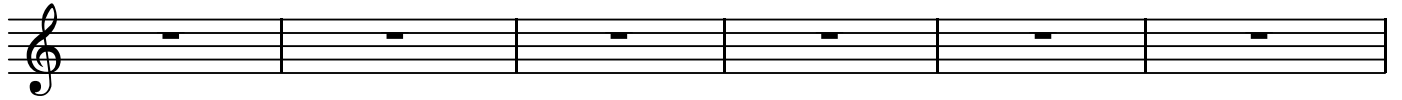
第14番 バッカス万歳、バッカス万歳

BK=1

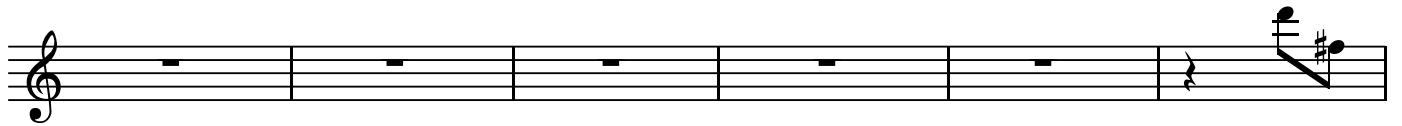


*A1*

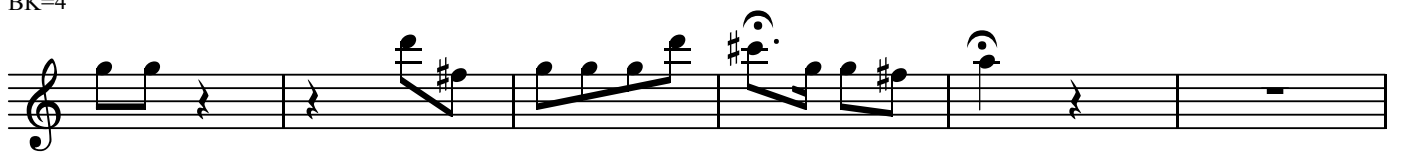
BK=2



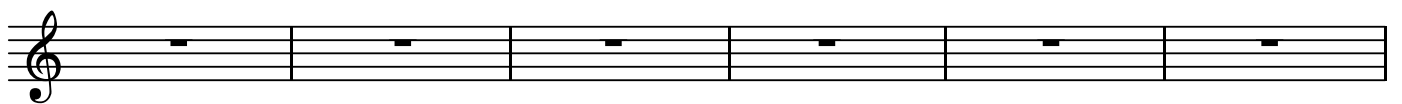
BK=3



BK=4



BK=5



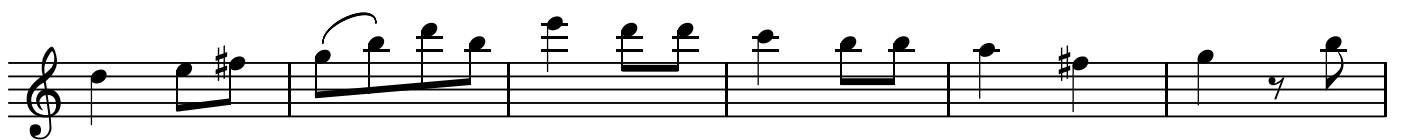
BK=6



BK=7



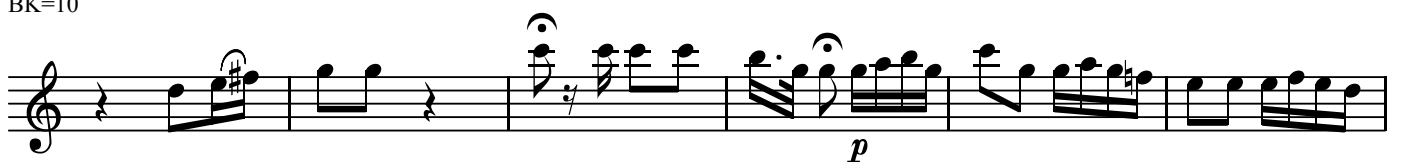
BK=8



BK=9



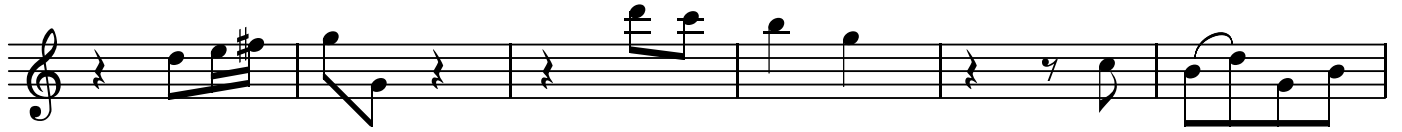
BK=10



BK=11



BK=12



BK=13



BK=14



BK=15



BK=16



BK=17



BK=1



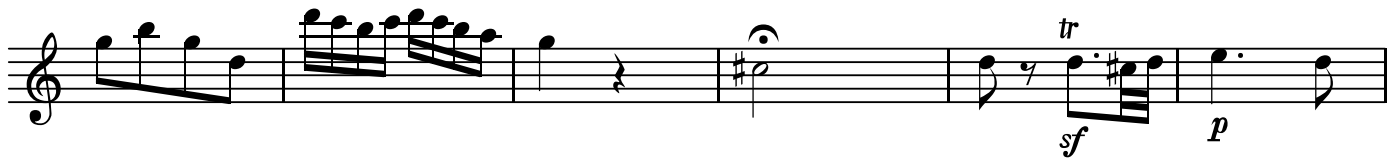
BK=2



BK=3



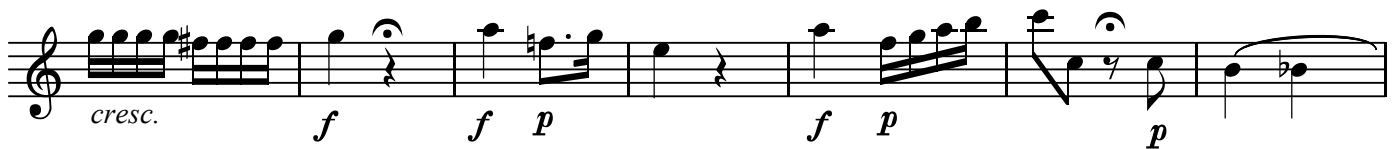
BK=4



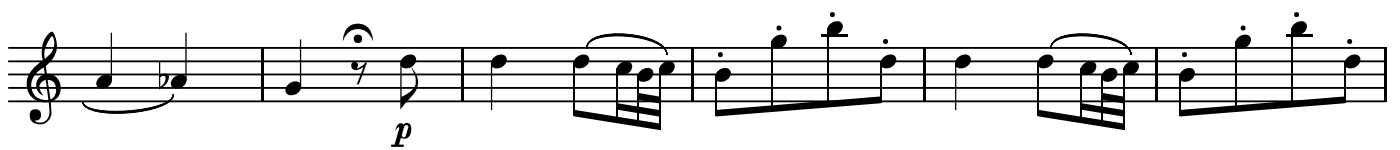
BK=5



BK=6



BK=7



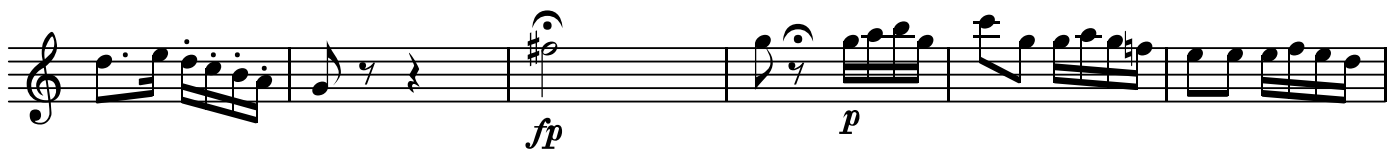
BK=8



BK=9



BK=10



BK=11



BK=12



BK=13



BK=14



BK=15



BK=16



BK=17



BK=1

Musical staff for BK=1, starting with a treble clef and a 2/4 time signature. The staff contains six measures of music, primarily consisting of eighth-note patterns. A dynamic marking of *TI* is placed below the first measure.

BK=2

Musical staff for BK=2, continuing the eighth-note patterns. A dynamic marking of *p* is placed below the fourth measure.

BK=3

Musical staff for BK=3, continuing the eighth-note patterns. The staff ends with a sharp sign (#) above the final note.

BK=4

Musical staff for BK=4, continuing the eighth-note patterns. The staff ends with a sharp sign (#) above the final note.

BK=5

Musical staff for BK=5, featuring a triplet of eighth notes marked with *fp* and a 3-measure triplet bracket. The staff continues with eighth-note patterns.

BK=6

Musical staff for BK=6, starting with a *cresc.* marking and a *f* dynamic marking. The staff contains eighth-note patterns and rests.

BK=7

Musical staff for BK=7, featuring a *p* dynamic marking and a long slur over a series of eighth-note patterns.

BK=8

Musical staff for BK=8, continuing the eighth-note patterns with a long slur.

BK=9

Musical staff for BK=9, continuing the eighth-note patterns. The staff ends with a sharp sign (#) above the final note.

BK=10

Musical staff for BK=10, starting with a sharp sign (#) above the first note. The staff contains eighth-note patterns and rests, with dynamic markings of *fp* and *p*.





第14番 バッカス万歳、バッカス万歳

BK=1

Musical staff for BK=1, starting with a treble clef and a 2/4 time signature. The staff contains six measures of music, primarily consisting of eighth notes.

BK=2

Musical staff for BK=2, continuing the eighth-note pattern. A dynamic marking of *p* (piano) is placed below the staff in the fourth measure.

BK=3

Musical staff for BK=3, continuing the eighth-note pattern.

BK=4

Musical staff for BK=4, featuring a half note with a fermata in the fourth measure and a quarter note with a fermata in the fifth measure.

BK=5

Musical staff for BK=5, starting with a whole rest in the first measure, followed by eighth notes and sixteenth notes.

BK=6

Musical staff for BK=6, featuring a *cresc.* (crescendo) marking and a *f* (forte) dynamic marking in the second measure.

BK=7

Musical staff for BK=7, featuring a *p* (piano) dynamic marking in the second measure and a fermata over a half note.

BK=8

Musical staff for BK=8, continuing the eighth-note pattern.

BK=9

Musical staff for BK=9, featuring a fermata over a half note in the fifth measure.

BK=10

Musical staff for BK=10, featuring a *fp* (fortissimo) dynamic marking in the second measure and a *p* (piano) dynamic marking in the sixth measure.

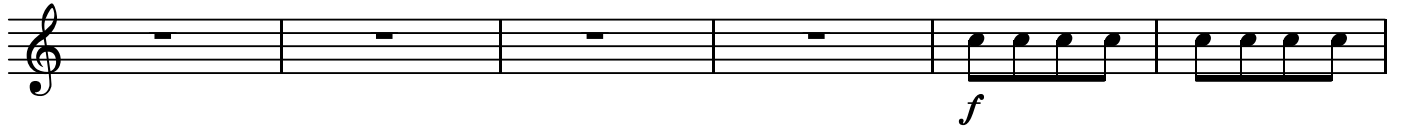
BK=11



BK=12



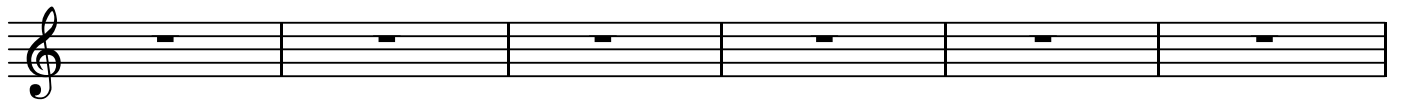
BK=13



BK=14



BK=15



BK=16



BK=17



B

第14番 バッカス万歳、バックカス万歳

BK=1



*B*

BK=2

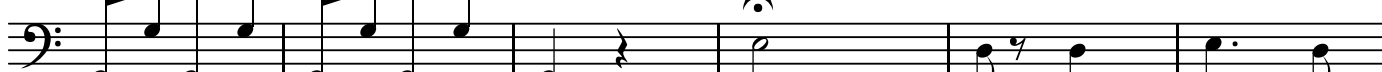


*p*

BK=3



BK=4



*sf*

*p*

BK=5



*fp*

BK=6



*cresc.*

*f*

*f*

*p*

*f*

*p*

*p*

BK=7



*p*

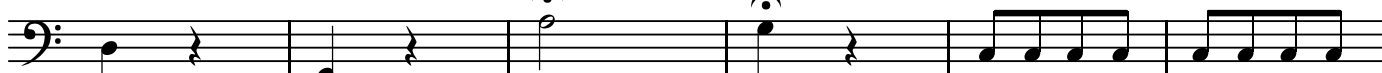
BK=8



BK=9



BK=10



*fp*

*p*

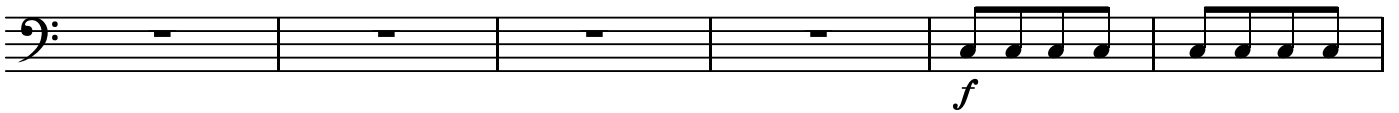
BK=11



BK=12



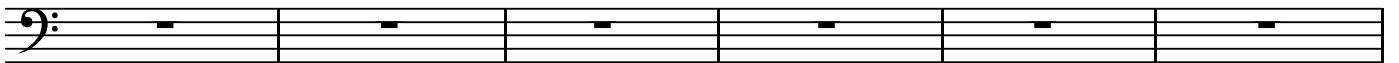
BK=13



BK=14



BK=15



BK=16



BK=17

