

BK=1

Adagio

S1

BK=2

BK=3

BK=4

BK=5

BK=6

Andante

*mf*

BK=7

*f* *p*

BK=8

*f* *p*

BK=9

BK=10

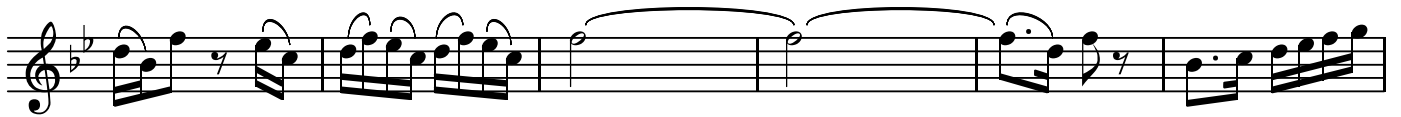
BK=11



BK=12



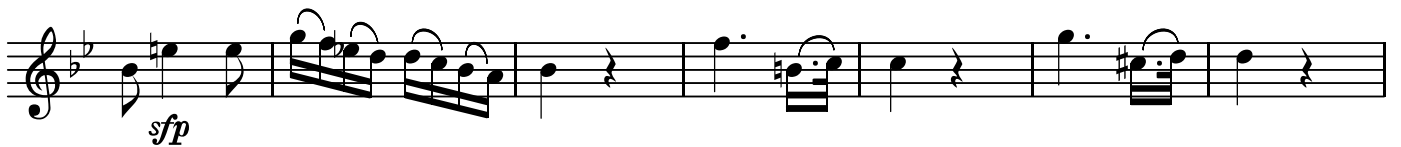
BK=13



BK=14



BK=15



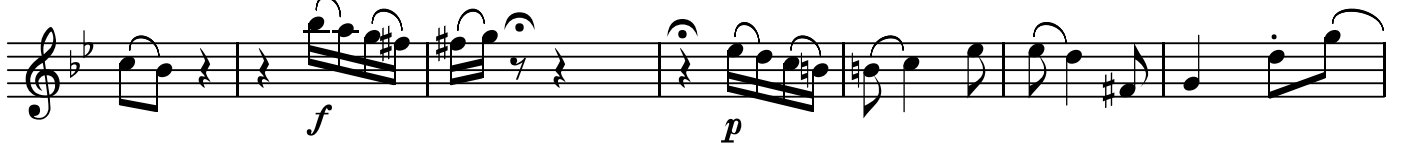
BK=16



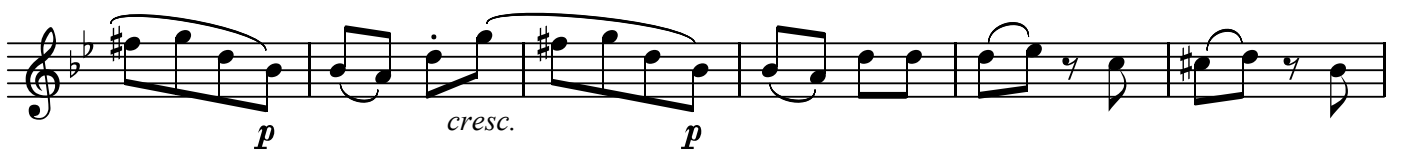
BK=17



BK=18



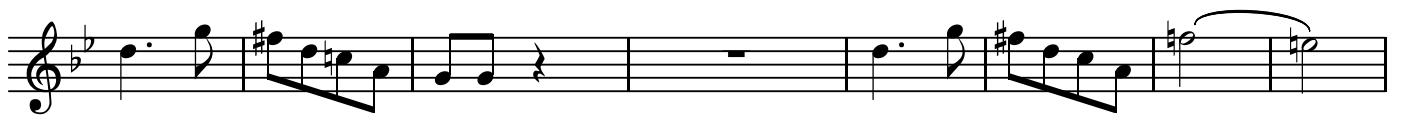
BK=19



BK=20



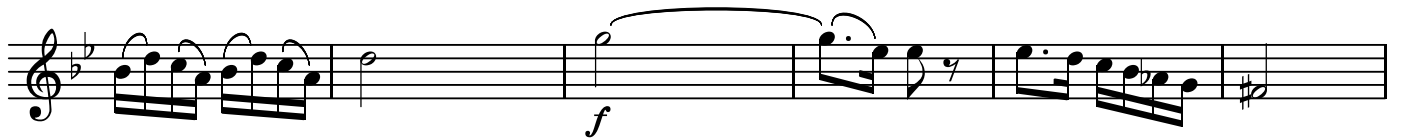
BK=21



BK=22



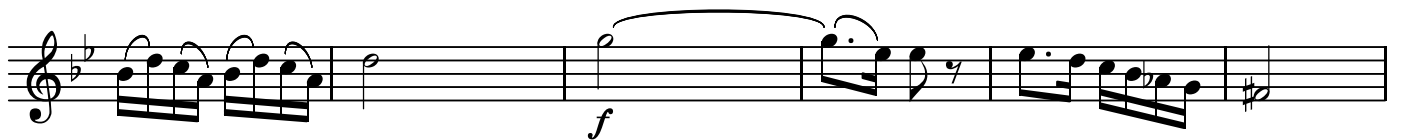
BK=23



BK=24



BK=25



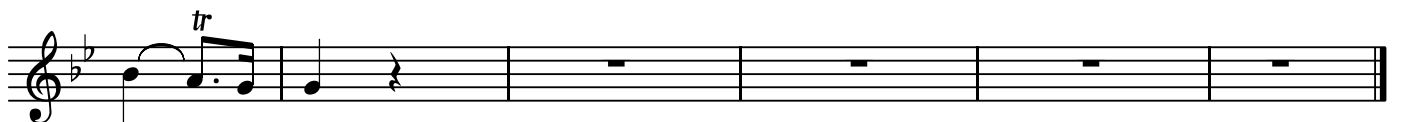
BK=26



BK=27



BK=28



第10番 私の心では、あの運命が二人を離した日から

BK=1



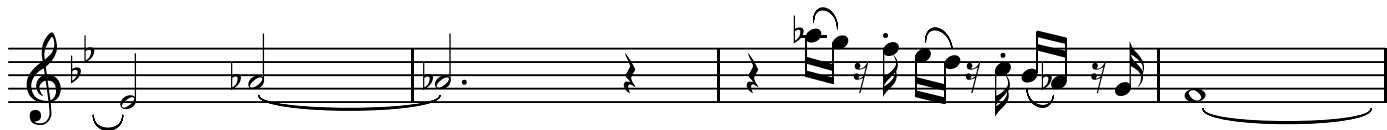
Musical notation for BK=1, starting with a treble clef, a key signature of two flats (B-flat and E-flat), and a common time signature (C). The first measure contains a whole note G3 with a dynamic marking of *p*. The second measure begins with a trill (tr) over a dotted quarter note G3, followed by a series of eighth and sixteenth notes. The piece concludes with a whole note G3.

BK=2



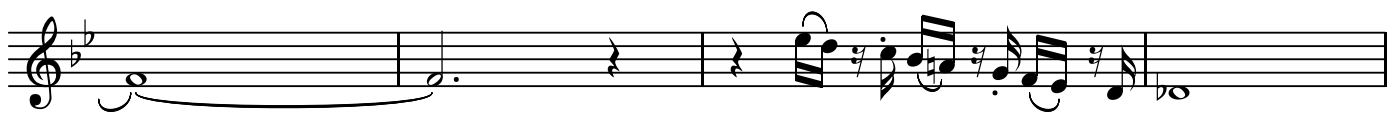
Musical notation for BK=2, continuing the melodic line with eighth and sixteenth notes, ending with a whole note G3.

BK=3



Musical notation for BK=3, featuring a half note G3, a quarter rest, and a series of eighth and sixteenth notes, ending with a whole note G3.

BK=4




Musical notation for BK=4, starting with a half note G3, a quarter rest, and a series of eighth and sixteenth notes, ending with a whole note G3.

BK=5



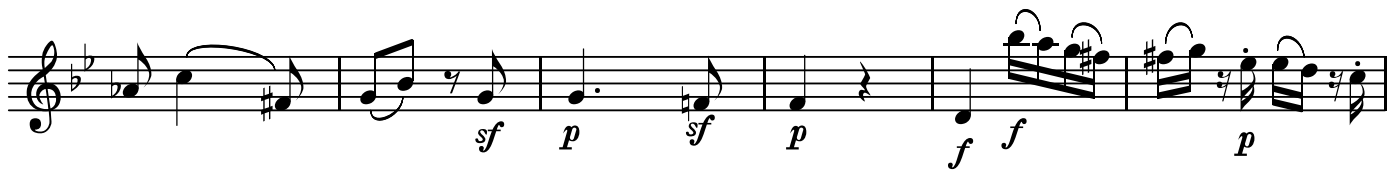
Musical notation for BK=5, featuring eighth and sixteenth notes, a dynamic marking of *sf*, and a final whole note G3 with a dynamic marking of *p*.

BK=6



Musical notation for BK=6, starting with a 2/4 time signature, a half rest, and a series of eighth and sixteenth notes, ending with a whole note G3 with a dynamic marking of *p*.

BK=7



Musical notation for BK=7, featuring eighth and sixteenth notes with dynamic markings of *sf*, *p*, *sf*, *p*, *f*, *f*, and *p*.

BK=8



Musical notation for BK=8, featuring eighth and sixteenth notes with dynamic markings of *f*, *f*, and *p*.

BK=9



Musical notation for BK=9, featuring eighth and sixteenth notes.

BK=10

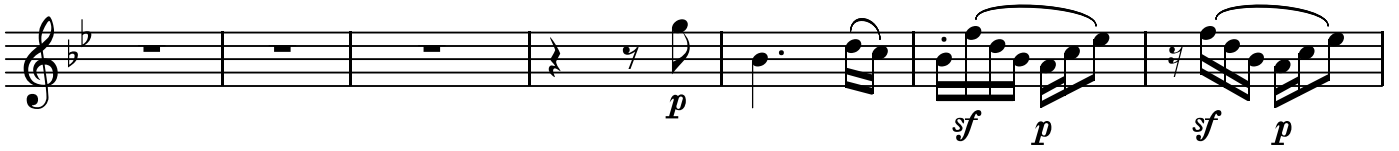


Musical notation for BK=10, consisting of six whole rests.

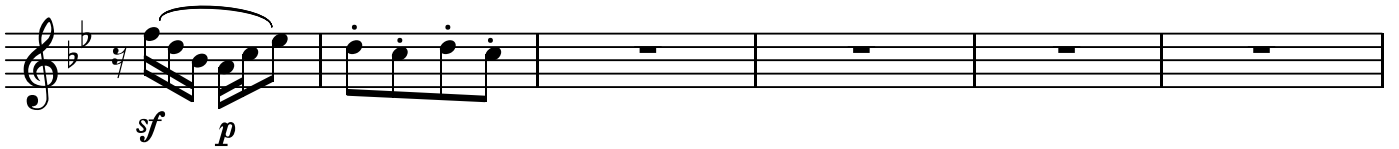
BK=11



BK=12



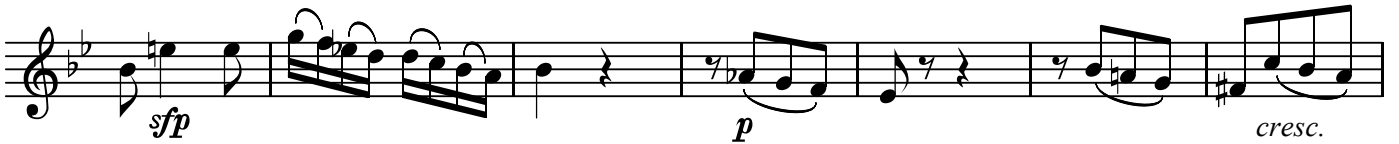
BK=13



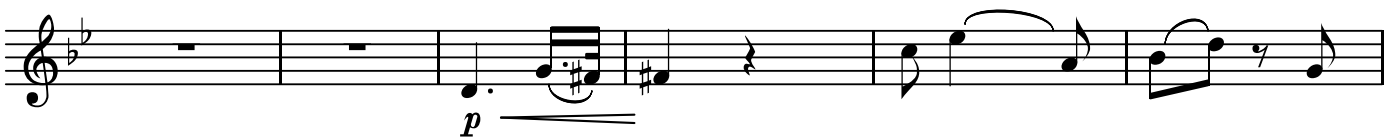
BK=14



BK=15



BK=16



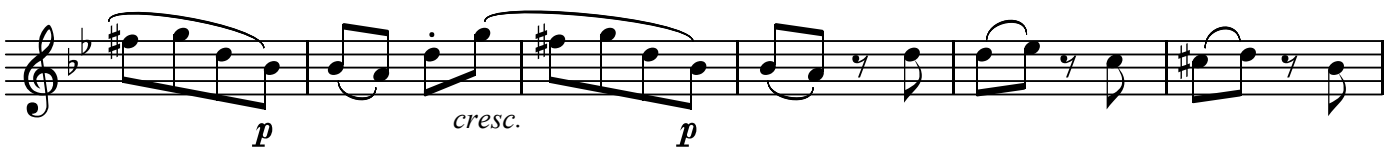
BK=17



BK=18



BK=19



BK=20



BK=21

Musical notation for BK=21, featuring a treble clef, a key signature of two flats, and a 4/4 time signature. The melody begins with a quarter rest, followed by a half note G4, a quarter rest, and a half note A4. A slur covers the next two measures: a quarter note B4 and a quarter note C5, both marked with a piano (*p*) dynamic. The piece concludes with a quarter rest.

BK=22

Musical notation for BK=22, featuring a treble clef, a key signature of two flats, and a 4/4 time signature. The melody starts with a quarter rest, followed by a quarter note G4 marked *p*. A slur covers the next two measures: a quarter note A4 and a quarter note B4, marked *sf*. This is followed by a quarter note C5 marked *p*. The final two measures consist of a quarter note B4 and a quarter note A4, each marked *sf* and *p* respectively.

BK=23

Musical notation for BK=23, featuring a treble clef, a key signature of two flats, and a 4/4 time signature. The melody consists of a quarter note G4, a quarter note A4, a quarter note B4, and a quarter note C5. The piece ends with a whole note D5 marked with a sharp sign (#).

BK=24

Musical notation for BK=24, featuring a treble clef, a key signature of two flats, and a 4/4 time signature. The melody begins with a quarter note G4, a quarter note A4, a quarter note B4, and a quarter note C5. A slur covers the next two measures: a quarter note B4 and a quarter note A4, marked *fp*. This is followed by a quarter note G4 marked *sf* and *p*. The final two measures consist of a quarter note F4 and a quarter note E4, each marked *sf* and *p* respectively.

BK=25

Musical notation for BK=25, featuring a treble clef, a key signature of two flats, and a 4/4 time signature. The melody consists of a quarter note G4, a quarter note A4, a quarter note B4, and a quarter note C5. The piece ends with a whole note D5 marked with a sharp sign (#).

BK=26

Musical notation for BK=26, featuring a treble clef, a key signature of two flats, and a 4/4 time signature. The melody starts with a quarter note G4, a quarter note A4, a quarter note B4, and a quarter note C5. A slur covers the next two measures: a quarter note B4 and a quarter note A4, marked *fp*. This is followed by a quarter note G4 marked *sf* and *p*. The final two measures consist of a quarter note F4 and a quarter note E4, each marked *sf* and *p* respectively.

BK=27

Musical notation for BK=27, featuring a treble clef, a key signature of two flats, and a 4/4 time signature. The melody begins with a quarter note G4 marked *sf*, a quarter note A4 marked *sf*, a quarter note B4 marked *p*, and a quarter note C5. A slur covers the next two measures: a quarter note B4 and a quarter note A4. The piece concludes with a whole note D5.

BK=28

Musical notation for BK=28, featuring a treble clef, a key signature of two flats, and a 4/4 time signature. The melody consists of a quarter note G4, a quarter note A4, a quarter note B4, and a quarter note C5. The piece ends with a quarter rest.

A

第10番 私の心では、あの運命が二人を離した日から

BK=1



Musical notation for BK=1, starting with a treble clef, a key signature of two flats (B-flat and E-flat), and a common time signature (C). The first measure is a whole rest. The second measure contains a half note G4 with a dynamic marking of *p*. The piece continues with a series of eighth and sixteenth notes, including some beamed sixteenth notes.

BK=2



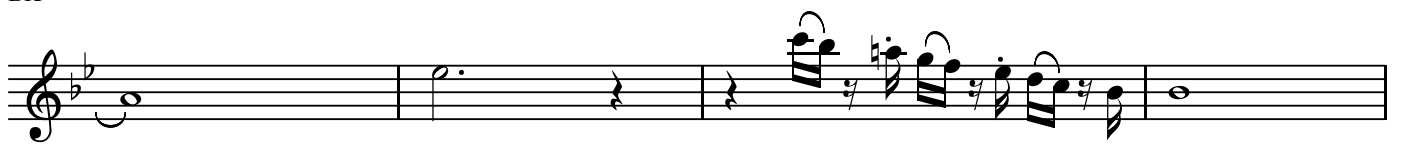
Musical notation for BK=2, continuing the melodic line with various rhythmic patterns and accidentals.

BK=3



Musical notation for BK=3, featuring a half note G4 followed by a whole note G4, and then a series of eighth notes.

BK=4



Musical notation for BK=4, starting with a half note G4, followed by a whole note G4, and then a series of eighth notes.

BK=5



Musical notation for BK=5, featuring a series of sixteenth notes and a dynamic marking of *sf* followed by *p*.

BK=6



Musical notation for BK=6, featuring a series of sixteenth notes and a dynamic marking of *p* followed by *mf* and *p*.

BK=7



Musical notation for BK=7, featuring a series of sixteenth notes and a dynamic marking of *sf* followed by *p*, *sf*, *f*, *sf*, and *p*.

BK=8



Musical notation for BK=8, featuring a series of sixteenth notes and a dynamic marking of *f*, *sf*, and *p*.

BK=9



Musical notation for BK=9, featuring a series of sixteenth notes and a dynamic marking of *f*.

BK=10

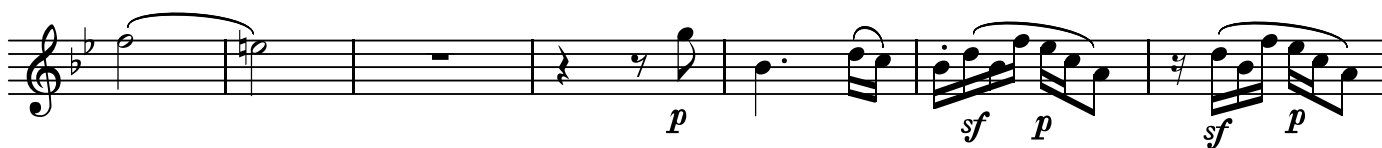


Musical notation for BK=10, featuring a series of sixteenth notes and a dynamic marking of *f*.

BK=11



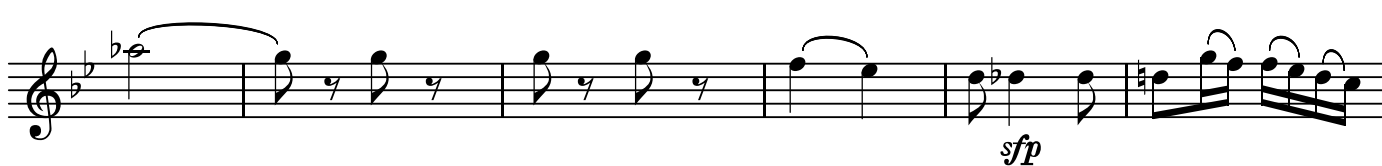
BK=12



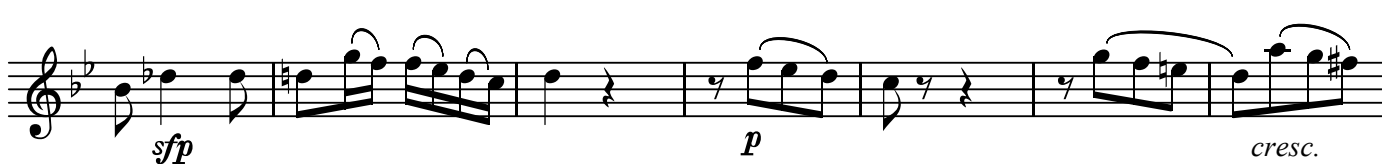
BK=13



BK=14



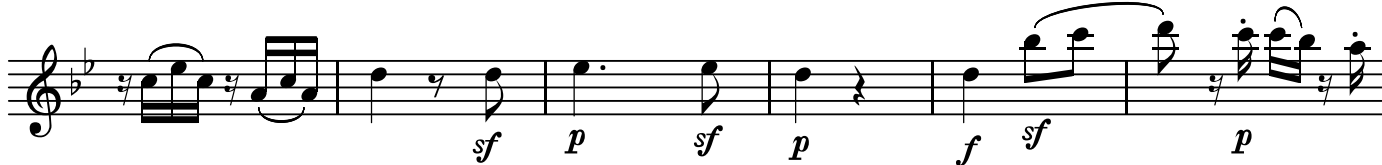
BK=15



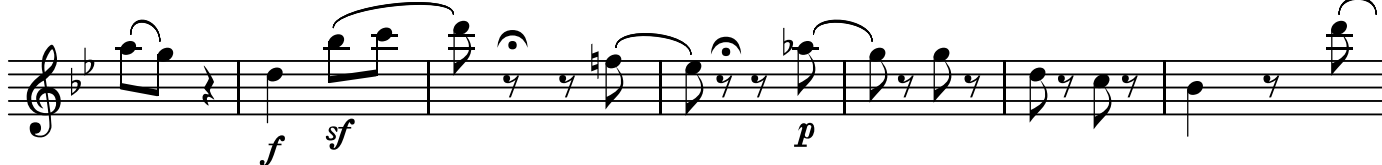
BK=16



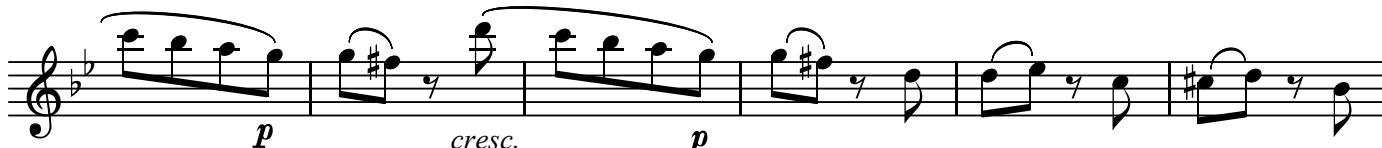
BK=17



BK=18



BK=19

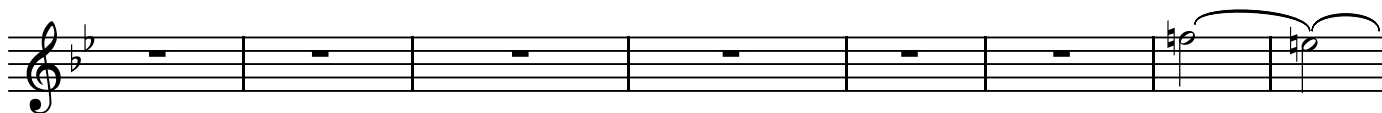


BK=20





BK=21



BK=22



BK=23



BK=24



BK=25



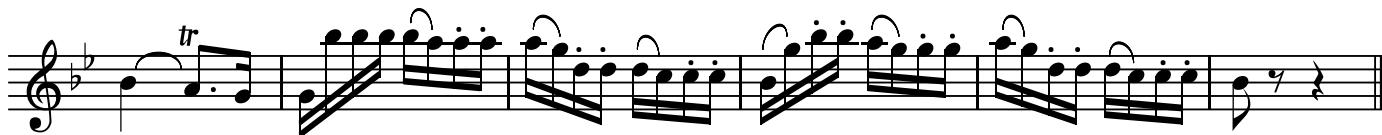
BK=26



BK=27



BK=28





BK=11



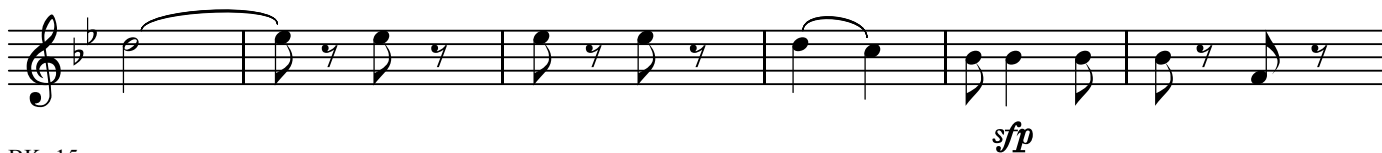
BK=12



BK=13



BK=14



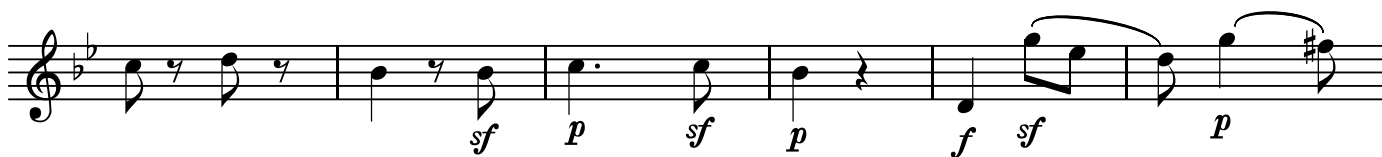
BK=15



BK=16



BK=17



BK=18



BK=19



BK=20



BK=21

Musical notation for BK=21, featuring a treble clef, a key signature of two flats, and a 4/4 time signature. The piece begins with a whole rest, followed by a series of sixteenth-note runs. The first run is marked *p* and the second is marked *p*. The notation concludes with a whole note chord consisting of a G4 and a B4.

BK=22

Musical notation for BK=22, featuring a treble clef, a key signature of two flats, and a 4/4 time signature. The piece starts with a half note chord (G4, B4) marked *p*, followed by eighth-note patterns. The notation includes dynamic markings *sf* and *p* for the eighth-note runs.

BK=23

Musical notation for BK=23, featuring a treble clef, a key signature of two flats, and a 4/4 time signature. The piece begins with eighth-note patterns marked *p*, followed by a sixteenth-note run marked *f*. The notation ends with a whole note chord (G4, B4).

BK=24

Musical notation for BK=24, featuring a treble clef, a key signature of two flats, and a 4/4 time signature. The piece starts with eighth-note patterns marked *fp*, followed by sixteenth-note runs marked *sf* and *p*.

BK=25

Musical notation for BK=25, featuring a treble clef, a key signature of two flats, and a 4/4 time signature. The piece begins with eighth-note patterns marked *p*, followed by a sixteenth-note run marked *f*. The notation ends with a whole note chord (G4, B4).

BK=26

Musical notation for BK=26, featuring a treble clef, a key signature of two flats, and a 4/4 time signature. The piece starts with eighth-note patterns marked *fp*, followed by eighth-note patterns marked *sf* and *p*.

BK=27

Musical notation for BK=27, featuring a treble clef, a key signature of two flats, and a 4/4 time signature. The piece begins with eighth-note patterns marked *sf*, followed by eighth-note patterns marked *sf* and *p*.

BK=28

Musical notation for BK=28, featuring a treble clef, a key signature of two flats, and a 4/4 time signature. The piece starts with a half note chord marked *tr*, followed by eighth-note patterns.



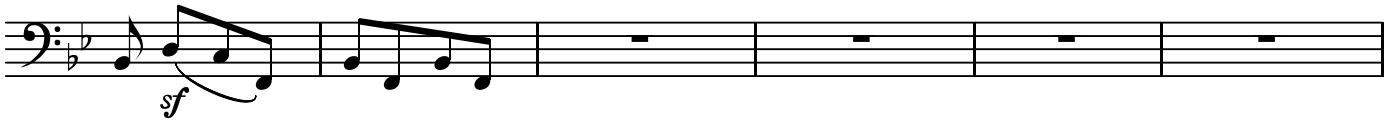
BK=11



BK=12



BK=13



BK=14



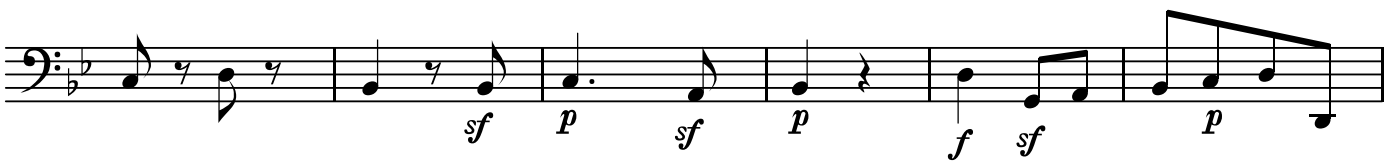
BK=15



BK=16



BK=17



BK=18



BK=19



BK=20



BK=21

Musical notation for BK=21, bass clef, 6/8 time signature. The piece starts with a whole rest, followed by a half rest, then a quarter rest. The next two measures feature a triplet of eighth notes (G2, F2, E2) with a slur above and a *p* dynamic marking below. This is followed by another triplet of eighth notes (D2, C2, B1) with a slur above and a *p* dynamic marking below. The piece concludes with a quarter rest, a half rest, and a whole rest.

BK=22

Musical notation for BK=22, bass clef, 6/8 time signature. The piece begins with a quarter rest, followed by a half note G2 with a slur above and a *p* dynamic marking below. The next measure is a half note F2. The following three measures consist of eighth notes: G2, F2, E2, D2, C2, B1, with slurs above and *sfp* dynamic markings below.

BK=23

Musical notation for BK=23, bass clef, 6/8 time signature. The piece starts with a quarter note G2, followed by eighth notes F2 and E2. The next four measures are whole rests, and the piece ends with a half note G2.

BK=24

Musical notation for BK=24, bass clef, 6/8 time signature. The piece begins with eighth notes G2 and F2, followed by eighth notes E2 and D2. The next measure is a half note C2 with a *fp* dynamic marking below. The final three measures consist of eighth notes: G2, F2, E2, D2, C2, B1, with slurs above and *sfp* dynamic markings below.

BK=25

Musical notation for BK=25, bass clef, 6/8 time signature. The piece starts with eighth notes G2 and F2, followed by eighth notes E2 and D2. The next four measures are whole rests, and the piece ends with a half note G2.

BK=26

Musical notation for BK=26, bass clef, 6/8 time signature. The piece begins with eighth notes G2 and F2, followed by eighth notes E2 and D2. The next measure is a half note C2 with a *fp* dynamic marking below. The following measure is a half note B1 with a *sf* dynamic marking below. The next measure is a half note A1 with a *p* dynamic marking below. The piece concludes with eighth notes G2 and F2.

BK=27

Musical notation for BK=27, bass clef, 6/8 time signature. The piece starts with eighth notes G2 and F2 with a *sf* dynamic marking below, followed by eighth notes E2 and D2 with a *sf* dynamic marking below. The next measure is a half note C2 with a *p* dynamic marking below. The piece concludes with eighth notes G2 and F2, eighth notes E2 and D2, eighth notes C2 and B1, and eighth notes A1 and G2.

BK=28

Musical notation for BK=28, bass clef, 6/8 time signature. The piece consists of eighth notes: G2 and F2, E2 and D2, C2 and B1, A1 and G2, F2 and E2, D2 and C2, and finally G2 and F2.