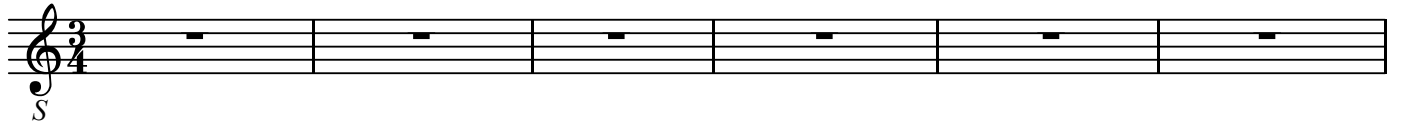


S

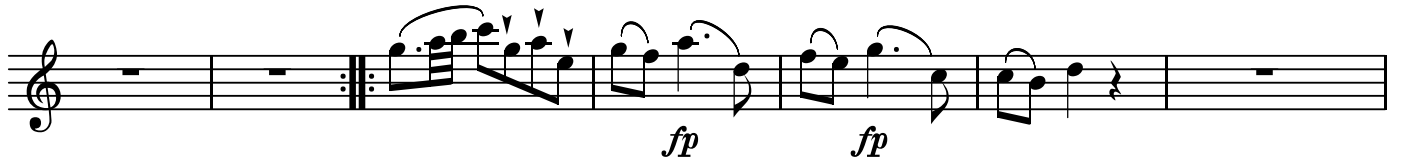
No. 3

BK=1

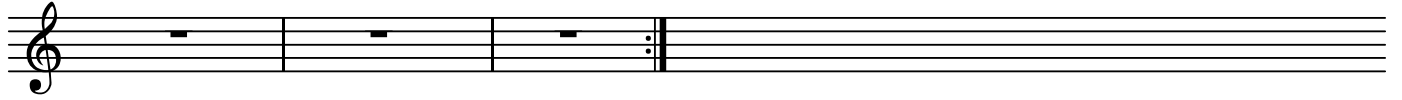


S

BK=2



BK=3



A1

No. 3

BK=1

*Al* *p*

BK=2

*fp* *fp*

BK=3

A2

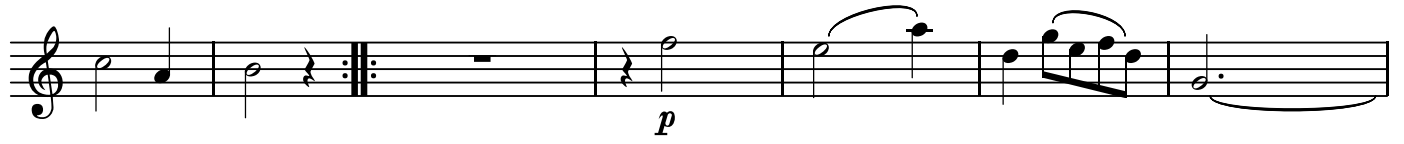
No. 3

BK=1



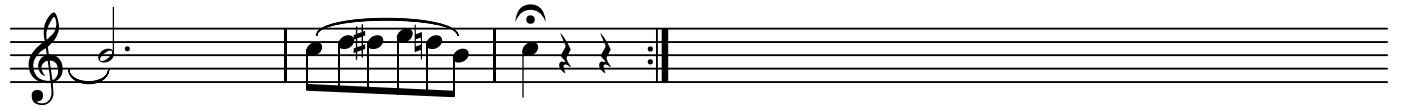
Musical notation for BK=1, featuring a treble clef, a 3/4 time signature, and a key signature of one flat. The notation includes a piano (*p*) dynamic marking and a fingering instruction 'A2'.

BK=2



Musical notation for BK=2, featuring a treble clef and a key signature of one flat. The notation includes a piano (*p*) dynamic marking and a repeat sign.

BK=3



Musical notation for BK=3, featuring a treble clef and a key signature of one flat. The notation includes a repeat sign.

T

No. 3

BK=1

Musical staff for BK=1, featuring a treble clef and a 3/4 time signature. The staff contains six measures of music. The first measure has a half note G4 with a fermata and a dynamic marking of *p*. The second measure has a half note G4. The third measure has a quarter note G4, a quarter note A4, and a quarter note B4, all beamed together with a fermata over the group. The fourth measure has a quarter note G4, a quarter rest, and a quarter rest. The fifth measure has a half note G4. The sixth measure has a half note G4.

BK=2

Musical staff for BK=2, featuring a treble clef and a 3/4 time signature. The staff contains six measures of music. The first measure has a quarter note G4, a quarter note A4, and a quarter note B4. The second measure has a quarter note G4, a quarter rest, and a quarter rest. The third measure has a double bar line with repeat dots. The fourth measure has a whole rest. The fifth measure has a quarter note G4, a quarter note A4, and a quarter note B4, all beamed together with a fermata over the group and a dynamic marking of *p*. The sixth measure has a quarter note G4, a quarter note A4, and a quarter note B4, all beamed together with a fermata over the group.

BK=3

Musical staff for BK=3, featuring a treble clef and a 3/4 time signature. The staff contains three measures of music. The first measure has a half note G4. The second measure has a quarter note G4, a quarter note A4, a quarter note B4, a quarter note C5, a quarter note B4, a quarter note A4, and a quarter note G4, all beamed together with a fermata over the group. The third measure has a quarter note G4, a quarter rest, and a quarter rest, followed by a double bar line with repeat dots.

