

S1

3つの四重唱のためのカノン「お前が心から好きだ」 KV348

W.A.Mozart

BK=1



BK=2



BK=3



A1

3つの四重唱のためのカノン「お前が心から好きだ」 KV348

W.A.Mozart

BK=1



Musical notation for BK=1, first staff. It begins with a treble clef, a key signature of one sharp (F#), and a common time signature (C). The melody consists of quarter notes: F#4, G4, A4, B4, C5, B4, A4, G4, F#4, E4, D4, C4. A slur covers the notes C5 and B4. The staff ends with a double bar line.

BK=2



Musical notation for BK=2, second staff. It begins with a treble clef, a key signature of one sharp (F#), and a common time signature (C). The melody starts with a repeat sign. The notes are: F#4, G4, A4, B4, C5, B4, A4, G4, F#4, E4, D4, C4. The staff ends with a double bar line.

BK=3



Musical notation for BK=3, third staff. It begins with a treble clef, a key signature of one sharp (F#), and a common time signature (C). The melody consists of quarter notes: F#4, G4, A4, B4, C5, B4, A4, G4, F#4, E4, D4, C4. A slur covers the notes C5 and B4. The staff ends with a double bar line.

T1

3つの四重唱のためのカノン「お前が心から好きだ」 KV348

W.A.Mozart

BK=1



BK=2



BK=3



B1

3つの四重唱のためのカノン「お前が心から好きだ」 KV348

W.A.Mozart

BK=1



Musical notation for BK=1, featuring a bass clef, a key signature of one sharp (F#), and a common time signature (C). The notation consists of three measures. The first measure contains four quarter notes: F#2, G2, A2, and B2. The second measure contains four quarter notes: C3, D3, E3, and F#3. The third measure contains a half note G3, a quarter rest, a half note A3, and a quarter note B3.

BK=2



Musical notation for BK=2, featuring a bass clef, a key signature of one sharp (F#), and a common time signature (C). The notation consists of three measures. The first measure contains a half note G3, a quarter rest, a half note A3, and a quarter note B3. The second measure contains a half note C4, a quarter rest, a half note D4, and a quarter note E4. The third measure contains a half note F#4, a quarter rest, a half note G4, and a quarter note A4.

BK=3



Musical notation for BK=3, featuring a bass clef, a key signature of one sharp (F#), and a common time signature (C). The notation consists of three measures. The first measure contains four quarter notes: F#2, G2, A2, and B2. The second measure contains four quarter notes: C3, D3, E3, and F#3. The third measure contains a half note G3, a quarter rest, a half note A3, and a quarter note B3, ending with a double bar line and repeat dots.

S2

3つの四重唱のためのカノン「お前が心から好きだ」 KV348

W.A.Mozart

BK=1



S2
BK=2



BK=3



T2

3つの四重唱のためのカノン「お前が心から好きだ」 KV348

W.A.Mozart

BK=1



T2
BK=2



BK=3



B2

3つの四重唱のためのカノン「お前が心から好きだ」 KV348

W.A.Mozart

BK=1



Musical notation for BK=1, featuring a bass clef, a key signature of one sharp (F#), and a common time signature (C). The notation consists of a single staff with a series of notes and rests.

BK=2



Musical notation for BK=2, featuring a bass clef, a key signature of one sharp (F#), and a common time signature (C). The notation consists of a single staff with a series of notes and rests.

BK=3

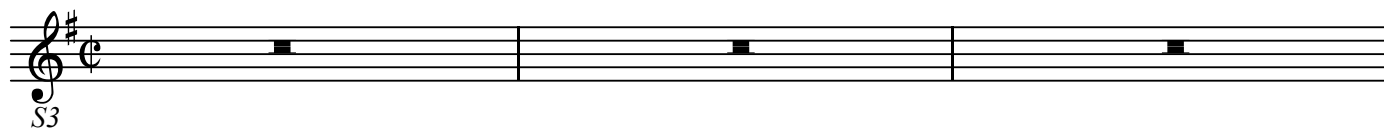


Musical notation for BK=3, featuring a bass clef, a key signature of one sharp (F#), and a common time signature (C). The notation consists of a single staff with a series of notes and rests.

3つの四重唱のためのカノン「お前が心から好きだ」 KV348

W.A.Mozart

BK=1



Musical staff for BK=1, showing a treble clef, a key signature of one sharp (F#), and a common time signature (C). The staff contains three measures, each with a whole rest.

BK=2



Musical staff for BK=2, showing a treble clef, a key signature of one sharp (F#), and a common time signature (C). The staff contains three measures of music: the first measure has a repeat sign followed by a half note G4, a quarter note A4, and a half note B4; the second measure has a half note C5, a quarter note B4, and a half note A4; the third measure has a half note G4, a quarter rest, and a half note F#4.

BK=3



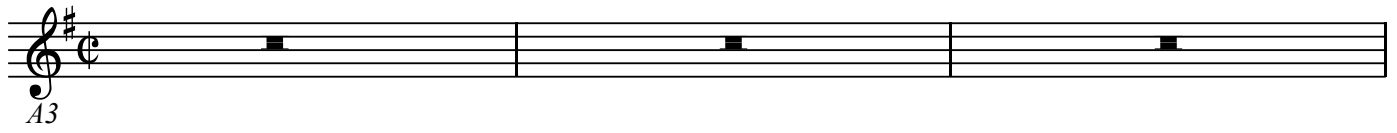
Musical staff for BK=3, showing a treble clef, a key signature of one sharp (F#), and a common time signature (C). The staff contains three measures of music: the first measure has a quarter rest, a quarter note G4, a quarter note A4, and a half note B4; the second measure has a quarter rest, a quarter note C5, a quarter note B4, and a half note A4; the third measure has a half note G4, a quarter rest, and a half note F#4.

A3

3つの四重唱のためのカノン「お前が心から好きだ」 KV348

W.A.Mozart

BK=1



Musical staff for BK=1, showing a treble clef, a key signature of one sharp (F#), and a common time signature (C). The staff contains three measures, each with a whole rest.

BK=2



Musical staff for BK=2, showing a treble clef, a key signature of one sharp (F#), and a common time signature (C). The staff contains three measures of music. The first measure starts with a repeat sign and contains a sequence of eighth notes: G4, A4, B4, C5, followed by a slur over two eighth notes: D5 and E5. The second measure contains a sequence of eighth notes: F#4, G4, A4, B4, followed by a whole note: C5. The third measure contains a whole note: D5, followed by a whole rest, a whole note: E5, and another whole rest.

BK=3



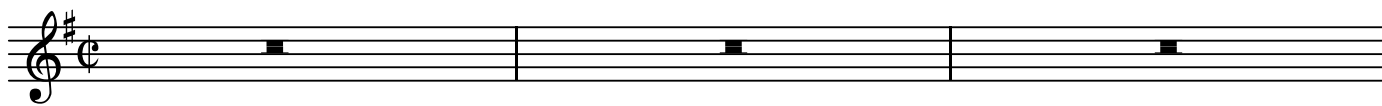
Musical staff for BK=3, showing a treble clef, a key signature of one sharp (F#), and a common time signature (C). The staff contains three measures of music. The first measure contains a whole rest, followed by a quarter rest, and then a sequence of eighth notes: G4, A4, B4, C5. The second measure contains a whole note: D5, followed by a whole note: E5, a quarter rest, and then a sequence of eighth notes: G4, A4, B4, C5. The third measure contains a whole note: D5, followed by a whole note: E5, and another whole note: D5. The staff ends with a double bar line and repeat dots.

T3

3つの四重唱のためのカノン「お前が心から好きだ」 KV348

W.A.Mozart

BK=1



T3
BK=2



BK=3

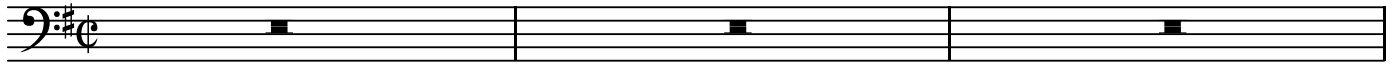


B3

3つの四重唱のためのカノン「お前が心から好きだ」 KV348

W.A.Mozart

BK=1



B3

BK=2



BK=3

