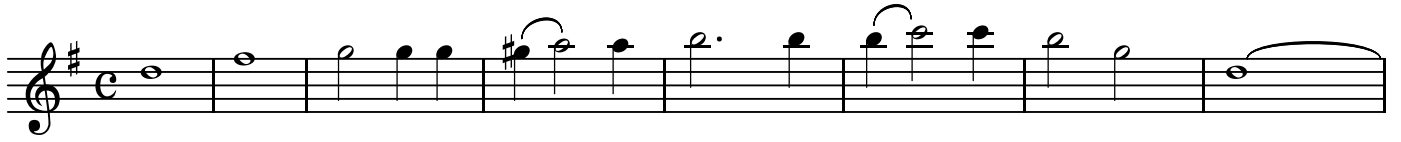


A1

六声のカノン「滴るワインがグラスに」 KV347

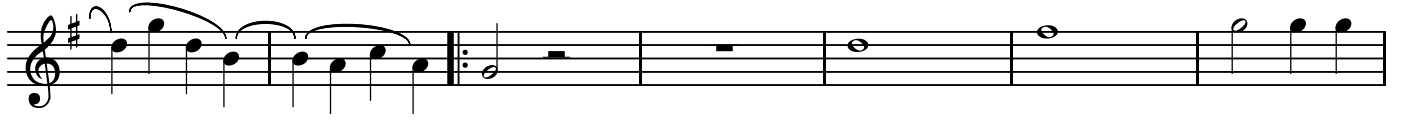
W.A.Mozart

BK=1

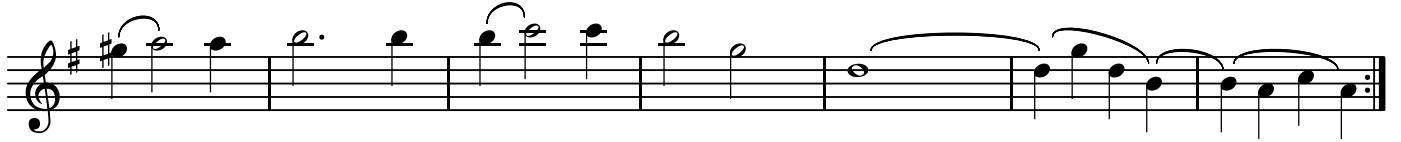


*Al*

BK=2



BK=3



A2

六声のカノン「滴るワインがグラスに」 KV347

W.A.Mozart

BK=1



Musical notation for BK=1, starting with a treble clef, a key signature of one sharp (F#), and a common time signature (C). The notation consists of a single staff with a series of notes and rests, including a repeat sign.

BK=2



Musical notation for BK=2, starting with a treble clef, a key signature of one sharp (F#), and a common time signature (C). The notation consists of a single staff with a series of notes and rests, including a repeat sign.

BK=3



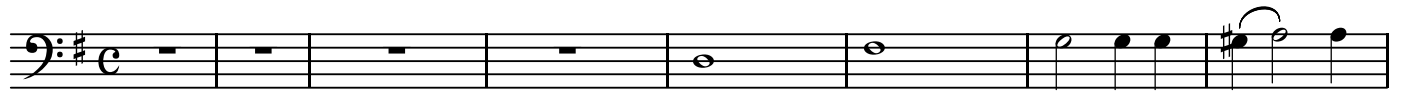
Musical notation for BK=3, starting with a treble clef, a key signature of one sharp (F#), and a common time signature (C). The notation consists of a single staff with a series of notes and rests, including a repeat sign.

B1

六声のカノン「滴るワインがグラスに」 KV347

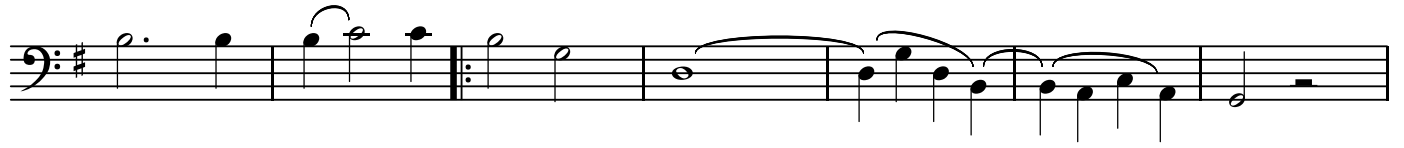
W.A.Mozart

BK=1



*B1*

BK=2



BK=3

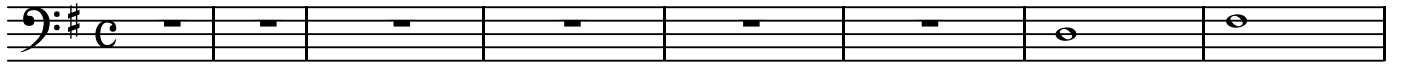


B2

六声のカノン「滴るワインがグラスに」 KV347

W.A.Mozart

BK=1

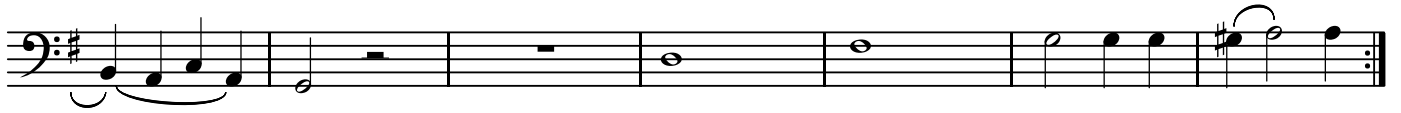


B2

BK=2



BK=3

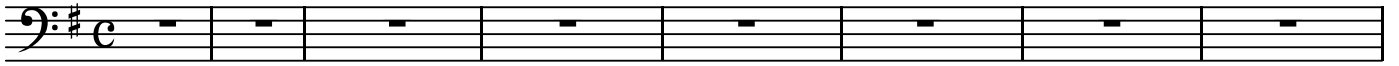


B3

六声のカノン「滴るワインがグラスに」 KV347

W.A.Mozart

BK=1



B3

BK=2



BK=3

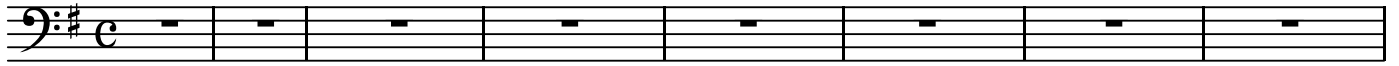


B4

六声のカノン「滴るワインがグラスに」 KV347

W.A.Mozart

BK=1



*B4*

BK=2



BK=3

