

BK=1 Allegretto



BK=2



BK=3



BK=4



S2

ノットウルノ「いとしのひとみ、うるわしの目」 KV346

W.A.Mozart

BK=1

Musical notation for BK=1, first staff. The staff begins with a treble clef, a key signature of one sharp (F#), and a common time signature (C). The melody consists of a series of eighth and sixteenth notes, some beamed together, with rests. The notation ends with a repeat sign.

BK=2

Musical notation for BK=2, second staff. The staff continues the melody from the first staff, featuring eighth and sixteenth notes with some beaming. It concludes with a repeat sign.

BK=3

Musical notation for BK=3, third staff. The staff continues the melody, including a measure with a sharp sign (#) before the first note. It ends with a repeat sign.

BK=4

Musical notation for BK=4, fourth staff. The staff continues the melody, ending with a repeat sign.

T1

ノットウルノ「いとしのひとみ、うるわしの目」 KV346

W.A.Mozart

BK=1



Musical notation for BK=1, starting with a treble clef, a key signature of one sharp (F#), and a common time signature (C). The notation includes various note values, rests, and phrasing slurs.

BK=2



Musical notation for BK=2, continuing the piece with similar notation to BK=1.

BK=3



Musical notation for BK=3, continuing the piece with similar notation to BK=1.

BK=4



Musical notation for BK=4, continuing the piece with similar notation to BK=1.

T2

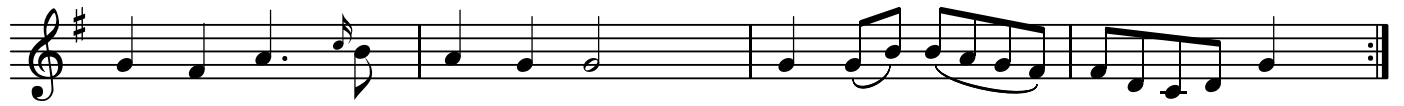
ノットウルノ「いとしのひとみ、うるわしの目」 KV346

W.A.Mozart

BK=1



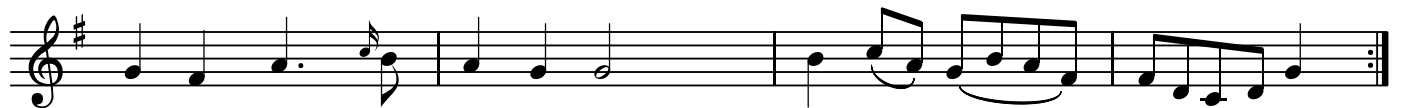
BK=2



BK=3



BK=4



B

ノットウルノ「いとしのひとみ、うるわしの目」 KV346

W.A.Mozart

BK=1



BK=2



BK=3



BK=4



CB

ノットウルノ「いとしのひとみ、うるわしの目」 KV346

W.A.Mozart

BK=1



BK=2



BK=3



BK=4

