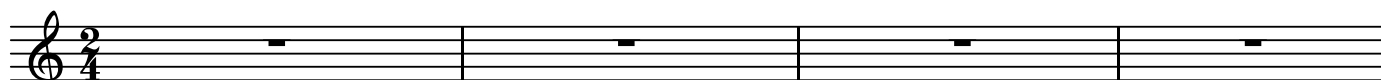


Sn

No. 2

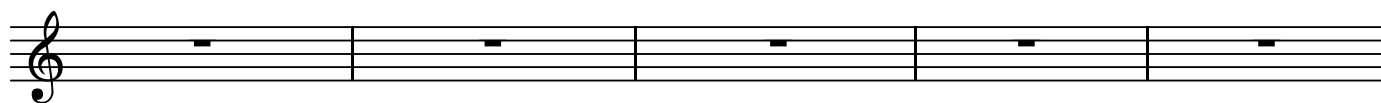
BK=1

*maestoso*



*Sn*

BK=2



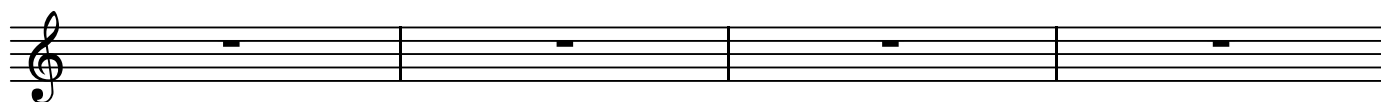
BK=3



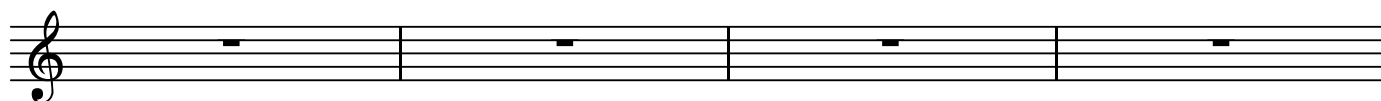
BK=4



BK=5



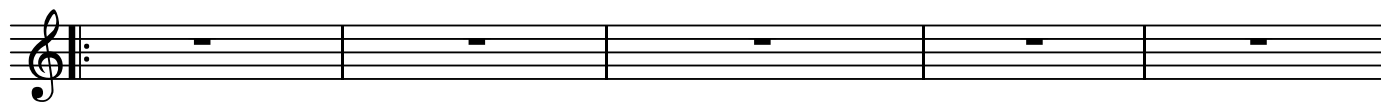
BK=6



BK=7



BK=8



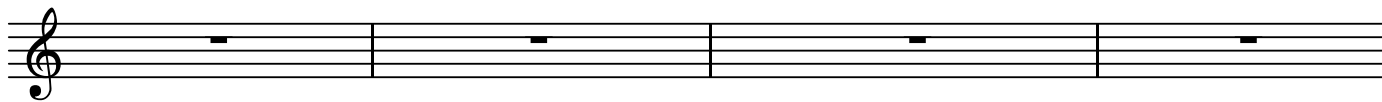
BK=9



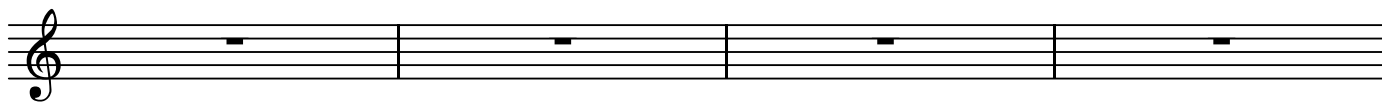
BK=10



BK=11



BK=12



BK=13



BK=14



BK=1

Musical staff BK=1, starting with a treble clef and a 2/4 time signature. The staff contains a whole rest followed by a series of eighth and sixteenth notes. Dynamics include *f* (forte) and *S* (sforzando).

BK=2

Musical staff BK=2, featuring eighth and sixteenth notes with accents. Dynamics include *p* (piano).

BK=3

Musical staff BK=3, featuring eighth and sixteenth notes with accents.

BK=4

Musical staff BK=4, featuring eighth and sixteenth notes with accents. Dynamics include *f* (forte) and *p* (piano).

BK=5

Musical staff BK=5, featuring eighth and sixteenth notes with accents.

BK=6

Musical staff BK=6, featuring eighth and sixteenth notes with accents. Dynamics include *f* (forte) and a trill (*tr*).

BK=7

Musical staff BK=7, featuring eighth and sixteenth notes with accents. Dynamics include *p* (piano) and *f* (forte).

BK=8

Musical staff BK=8, featuring eighth and sixteenth notes with accents. Dynamics include *f* (forte) and *p* (piano). A triplet of eighth notes is marked with a '3' and a bracket.

BK=9

Musical staff BK=9, featuring eighth and sixteenth notes with accents. Dynamics include *f* (forte).

BK=10

Musical staff BK=10, featuring eighth and sixteenth notes with accents. Dynamics include *p* (piano).

BK=11



BK=12



BK=13



BK=14



BK=1

Musical staff BK=1, starting with a treble clef and a 4/4 time signature. It begins with a dynamic marking of *f* and includes a triplet of eighth notes. The staff contains a series of eighth and sixteenth notes, some with slurs and accents.

BK=2

Musical staff BK=2, continuing the melodic line with eighth and sixteenth notes. It features a dynamic marking of *p* towards the end of the staff.

BK=3

Musical staff BK=3, featuring eighth and sixteenth notes with various slurs and accents throughout the staff.

BK=4

Musical staff BK=4, containing eighth and sixteenth notes. It includes dynamic markings of *f* and *p*.

BK=5

Musical staff BK=5, showing eighth and sixteenth notes with slurs and accents.

BK=6

Musical staff BK=6, featuring eighth and sixteenth notes. It includes a dynamic marking of *f* and a trill (*tr*) at the end of the staff.

BK=7

Musical staff BK=7, containing eighth and sixteenth notes with slurs and accents. It includes dynamic markings of *p* and *f*.

BK=8

Musical staff BK=8, featuring eighth and sixteenth notes. It includes dynamic markings of *f* and *p*.

BK=9

Musical staff BK=9, containing eighth and sixteenth notes with slurs and accents. It includes a dynamic marking of *f*.

BK=10

Musical staff BK=10, featuring eighth and sixteenth notes. It includes a dynamic marking of *p*.

BK=11



BK=12



BK=13



BK=14



BK=1

Musical staff BK=1, starting with a treble clef and a 2/4 time signature. The staff contains a complex melodic line with many sixteenth notes and triplets. A dynamic marking of *f* is present at the beginning.

BK=2

Musical staff BK=2, starting with a treble clef. The staff contains a melodic line with some rests and sixteenth notes. A dynamic marking of *p* is present at the beginning.

BK=3

Musical staff BK=3, starting with a treble clef. The staff contains a melodic line with rests and sixteenth notes. A dynamic marking of *p* is present.

BK=4

Musical staff BK=4, starting with a treble clef. The staff contains a melodic line with sixteenth notes and slurs. A dynamic marking of *f* is present.

BK=5

Musical staff BK=5, starting with a treble clef. The staff contains a melodic line with rests and sixteenth notes. A dynamic marking of *p* is present.

BK=6

Musical staff BK=6, starting with a treble clef. The staff contains a melodic line with sixteenth notes, slurs, and a trill. A dynamic marking of *f* is present.

BK=7

Musical staff BK=7, starting with a treble clef. The staff contains a melodic line with sixteenth notes and slurs. Dynamic markings of *p* and *f* are present.

BK=8

Musical staff BK=8, starting with a treble clef. The staff contains a melodic line with sixteenth notes and slurs. Dynamic markings of *f* and *p* are present.

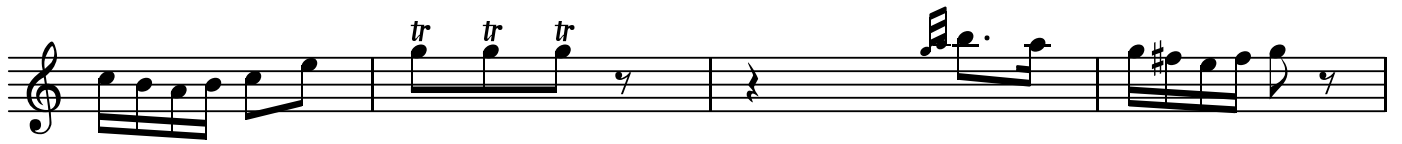
BK=9

Musical staff BK=9, starting with a treble clef. The staff contains a melodic line with sixteenth notes and slurs. A dynamic marking of *f* is present.

BK=10

Musical staff BK=10, starting with a treble clef. The staff contains a melodic line with sixteenth notes and slurs. A dynamic marking of *p* is present.

BK=11



BK=12



BK=13



BK=14





BK=1

Musical staff for BK=1, starting with a treble clef and a 2/4 time signature. The staff contains a complex melodic line with a triplet of eighth notes, followed by sixteenth notes and quarter notes. Dynamics include *f* (forte) and *fz* (forzando).

BK=2

Musical staff for BK=2, starting with a treble clef. The staff contains a melodic line with quarter notes and eighth notes, ending with a quarter rest.

BK=3

Musical staff for BK=3, starting with a treble clef. The staff contains a melodic line with quarter notes and eighth notes, featuring a *p* (piano) dynamic marking.

BK=4

Musical staff for BK=4, starting with a treble clef. The staff contains a melodic line with eighth notes and quarter notes, featuring a *f* (forte) dynamic marking.

BK=5

Musical staff for BK=5, starting with a treble clef. The staff contains a melodic line with quarter notes and rests.

BK=6

Musical staff for BK=6, starting with a treble clef. The staff contains a melodic line with quarter notes and eighth notes, featuring a *f* (forte) dynamic marking and a trill (*tr*) at the end.

BK=7

Musical staff for BK=7, starting with a treble clef. The staff contains a melodic line with quarter notes and eighth notes, featuring a *f* (forte) dynamic marking.

BK=8

Musical staff for BK=8, starting with a treble clef. The staff contains a melodic line with quarter notes and eighth notes, featuring a *f* (forte) dynamic marking and a *p* (piano) dynamic marking.

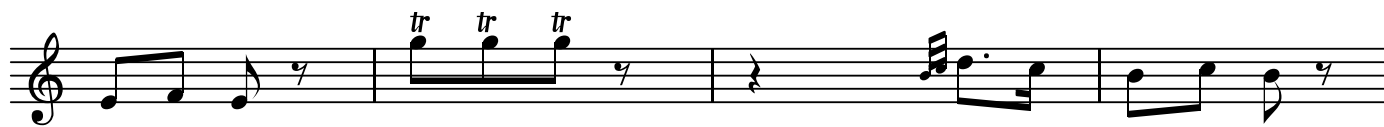
BK=9

Musical staff for BK=9, starting with a treble clef. The staff contains a melodic line with eighth notes and quarter notes, featuring a *f* (forte) dynamic marking.

BK=10

Musical staff for BK=10, starting with a treble clef. The staff contains a melodic line with eighth notes and quarter notes, featuring a *p* (piano) dynamic marking.

BK=11



BK=12



BK=13



BK=14



BK=1

Musical staff BK=1, Treble clef, 2/4 time signature. The staff begins with a treble clef and a 2/4 time signature. It contains a complex rhythmic pattern with a triplet of eighth notes, followed by a series of eighth and sixteenth notes. Dynamics include *f* (forte) and *f* (forte).

BK=2

Musical staff BK=2, Treble clef. The staff contains a series of eighth notes, followed by a quarter note and a half note. Dynamics include *p* (piano).

BK=3

Musical staff BK=3, Treble clef. The staff contains a series of quarter notes and half notes, with some rests. Dynamics include *p* (piano).

BK=4

Musical staff BK=4, Treble clef. The staff contains a series of eighth notes and quarter notes, with a dynamic of *f* (forte) and *p* (piano).

BK=5

Musical staff BK=5, Treble clef. The staff contains a series of eighth notes and quarter notes, with a dynamic of *p* (piano).

BK=6

Musical staff BK=6, Treble clef. The staff contains a series of eighth notes and quarter notes, with a dynamic of *f* (forte).

BK=7

Musical staff BK=7, Treble clef. The staff contains a series of eighth notes and quarter notes, with dynamics of *p* (piano) and *f* (forte).

BK=8

Musical staff BK=8, Treble clef. The staff contains a series of eighth notes and quarter notes, with dynamics of *f* (forte) and *p* (piano). It includes a triplet of eighth notes.

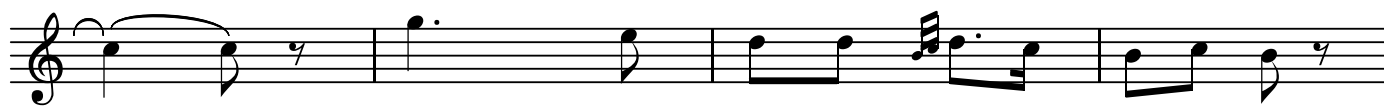
BK=9

Musical staff BK=9, Treble clef. The staff contains a series of eighth notes and quarter notes, with a dynamic of *f* (forte).

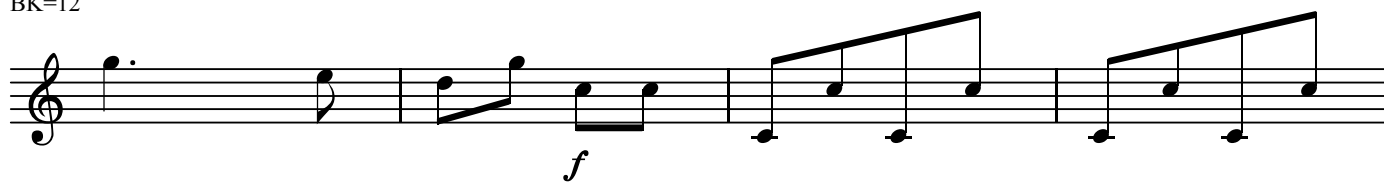
BK=10

Musical staff BK=10, Treble clef. The staff contains a series of eighth notes and quarter notes, with a dynamic of *p* (piano).

BK=11



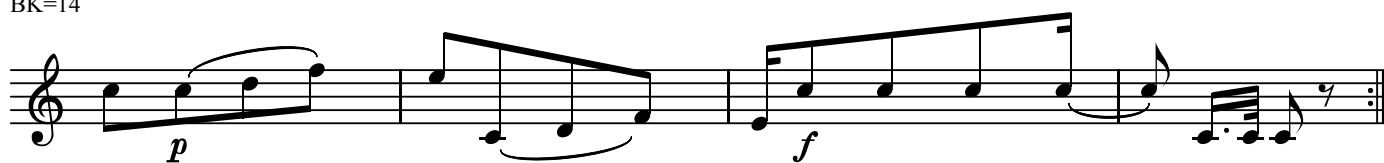
BK=12



BK=13



BK=14



BK=1

First musical staff (BK=1) in bass clef, 2/4 time signature. It begins with a dynamic marking of *f* and a triplet of eighth notes. The staff contains several measures of eighth and sixteenth notes, ending with a quarter rest.

BK=2

Second musical staff (BK=2) in bass clef, 2/4 time signature. It starts with a dynamic marking of *p*. The staff features a series of eighth notes and quarter notes, ending with a quarter rest.

BK=3

Third musical staff (BK=3) in bass clef, 2/4 time signature. It begins with a quarter rest, followed by eighth notes and quarter notes, ending with a quarter rest.

BK=4

Fourth musical staff (BK=4) in bass clef, 2/4 time signature. It starts with a dynamic marking of *f*. The staff contains eighth notes, quarter notes, and a triplet of eighth notes, ending with a quarter rest.

BK=5

Fifth musical staff (BK=5) in bass clef, 2/4 time signature. It begins with a dynamic marking of *p*. The staff features eighth notes, quarter notes, and a triplet of eighth notes, ending with a quarter rest.

BK=6

Sixth musical staff (BK=6) in bass clef, 2/4 time signature. It starts with a dynamic marking of *f*. The staff contains eighth notes, quarter notes, and a triplet of eighth notes, ending with a quarter rest.

BK=7

Seventh musical staff (BK=7) in bass clef, 2/4 time signature. It begins with a dynamic marking of *p*, followed by eighth notes and quarter notes. The staff ends with a double bar line and repeat dots. Dynamic markings of *f* appear in the final two measures.

BK=8

Eighth musical staff (BK=8) in bass clef, 2/4 time signature. It starts with a dynamic marking of *f*. The staff features eighth notes, quarter notes, and a triplet of eighth notes. It ends with a dynamic marking of *p*.

BK=9

Ninth musical staff (BK=9) in bass clef, 2/4 time signature. It begins with a dynamic marking of *f*. The staff contains eighth notes, quarter notes, and a triplet of eighth notes, ending with a quarter rest.

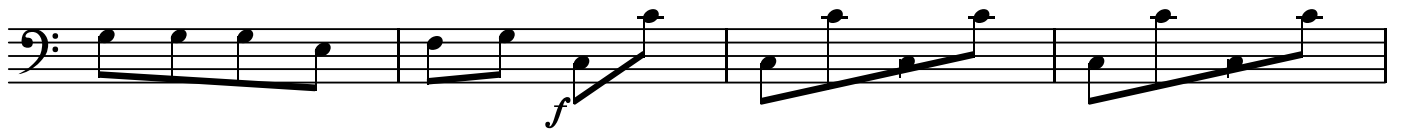
BK=10

Tenth musical staff (BK=10) in bass clef, 2/4 time signature. It starts with a dynamic marking of *p*. The staff features eighth notes and quarter notes, ending with a quarter rest.

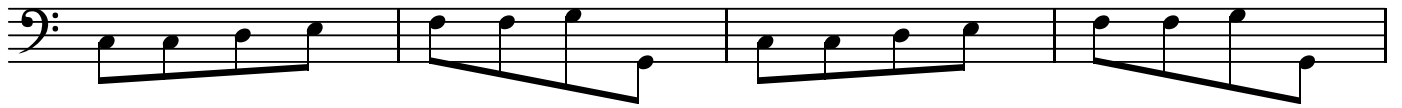
BK=11



BK=12



BK=13



BK=14

